

38-20-02-05-001

380 DEERDEN ADAMSVILLE PA

BOWMAN & ASSOCIATES
59 SECOND STREET
FRAZEYSBURG, OHIO 43822
PH./FAX (614) 828-2204

SURVEY DESCRIPTION
FOR
ATHERN SHEETS

PART OF PARCEL
#38-20-02-05-000 (7.612 Acres)

Situated in Quarter Township 2, T-3-N, R-7-W, U.S.M.L., Madison Township, Muskingum County, Ohio. Being part of lands of Athern Sheets as conveyed in Deed book 1119 page 595 of the Muskingum County deed records and being described as follows:

Commencing at a stone found in Northwest corner of lot 2 of C. Roberts Survey (D.B. "D" Pg. 275) in Quarter Township 3, located on the South line of Quarter Township 2; thence, S.89°54'43"W. a distance of 601.41 feet along the south line of said Quarter Township to a set rebar, BEING THE POINT OF BEGINNING;

thence, S.89°54'44"W. a distance of 1,034.17 feet along the South line of said quarter Township to a point in the center of State Route 208, passing a set rebar at 967.07 feet;

thence, N.63°21'28"E. a distance of 103.22 feet along the centerline of said road to a point;

thence, N.36°37'40"W. a distance of 180.63 feet through the lands of A. Sheets (1119/595) to a set rebar, passing a set rebar at 22.65 feet;

thence, N.66°31'15"E. a distance of 750.67 feet through said Sheets lands to a set rebar;

thence, S.29°24'08"E. a distance of 165.90 feet through said Sheets lands to a point in the center of State Route 208, passing a set rebar at 137.08 feet;

thence, N.71°04'44"E. a distance of 91.57 feet along the center of said road to a point;

thence, S.33°26'18"E. a distance of 299.95 feet through the lands of A. Sheets (1119/595) to a set rebar, passing a set rebar at 40.82 feet;

thence, S.12°40'33"E. a distance of 126.69 feet through said Sheets lands to the point of beginning.

The above described parcel contains 7.612 acres, more or less, and is subject to all legal easements and right of ways. All set iron pipes are 5/8" x 30" rebars. North is based upon an assumed meridian.

Description was prepared from an actual survey by Bowman & Associates, Stephen M. Bowman, P.S.#7135. January 06, 1997

OFFICE COPY
NOT RECORDABLE

DESCRIPTION APPROVED
FOR AUDITORS TRANSFER
BY [Signature]
1-6-97

NORTH IS BASED UPON
AN ASSUMED MERIDIAN

SCALE 1" = 300'



SURVEY PLAT FOR ATHERN SHEETS

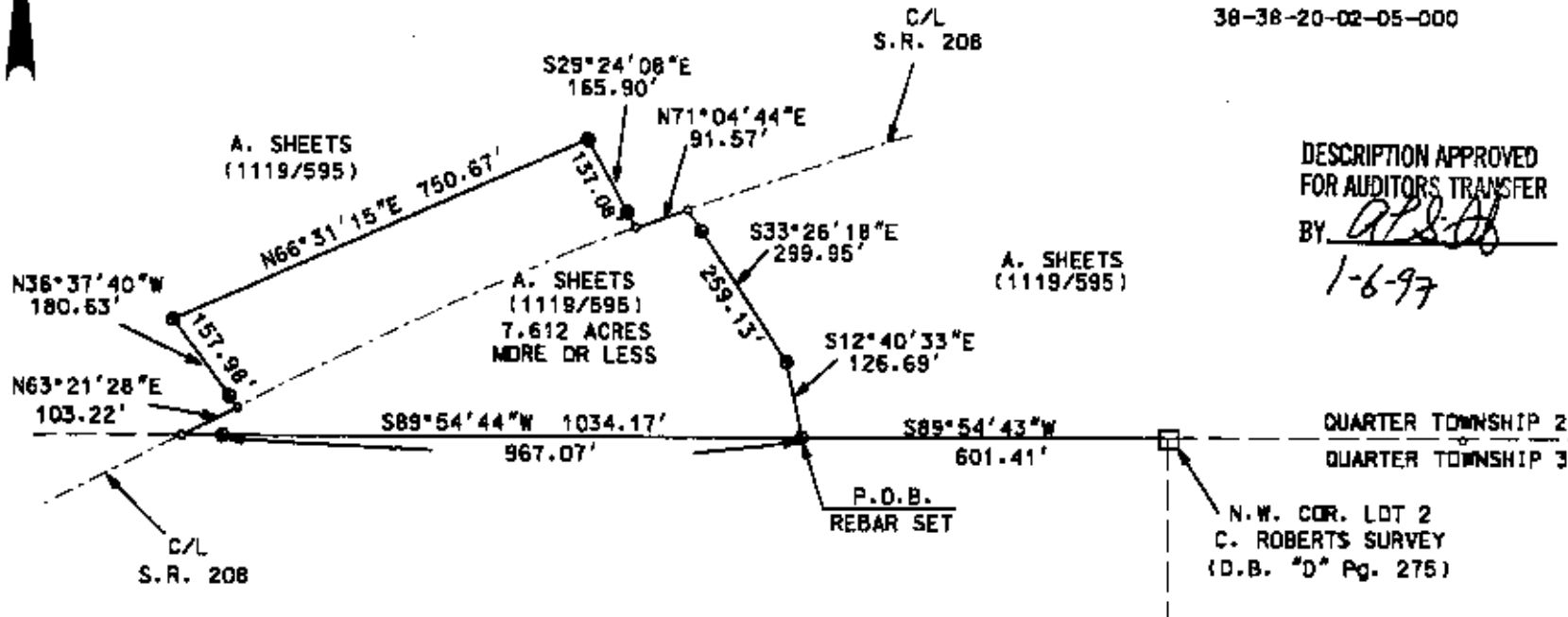
SITUATED IN QUARTER TOWNSHIP 2, T-8-N, R-7-W, U.S.M.L.,
MADISON TOWNSHIP, MUSKINGUM COUNTY, OHIO, BEING PART OF
THE LANDS OF ATHERN SHEETS AS LAST CONVEYED IN DEED
BOOK 1110 PAGE 696 OF THE MUSKINGUM COUNTY DEED RECORDS.

PART OF PARCEL
38-38-20-02-05-000

DESCRIPTION APPROVED
FOR AUDITORS TRANSFER

BY *APB*

1-6-97



LEGEND

- IRON PIN FOUND
- ⊙ 1/2" X 30" REBAR SET W/ I.D. CAP
- POINT
- STONE FND.



I CERTIFY THIS DRAWING WAS PREPARED
FROM AN ACTUAL FIELD SURVEY I CONDUCTED
ON JANUARY 1, 1997

**OFFICE COPY
NOT RECORDABLE**

BOWMAN & ASSOCIATES

59 SECOND STREET
FRAZEYSBURG, OHIO 43822
PHONE/FAX 614-828-2204

JOB: M-96300

DATE: 01/06/97