



Linn Engineering, Inc.

Civil Engineering Consultants

740-452-7434 • 1-800-991-7434 • FAX 740-452-5198

534 Market Street • P.O. Box 2086 • Zanesville, Ohio 43702-2086

38-20-02-08

Situated in the State of Ohio, County of Muskingum, Township of Madison, bounded and described as follows:

Being a part of the Quarter Township 2, Township 3 North, Range 7 West of the United States Military Lands and being all of the lands now owned by Barbara A. Lentz as recorded in Muskingum County Deed Record 1052, Page 482 and more particularly described as follows:

TRACT ONE: Beginning for reference at a stone found on the Northwest Corner of Lot 2 of William McCain's Lots as surveyed and platted by Charles Roberts on March 21, 1814, recorded in Muskingum County Deed Book "D", page 275;

THENCE along the north line of said Lot 2 South 89 degrees 08 minutes 44 seconds East for a distance of 482.20 feet to an iron pin found;

THENCE continuing along said line South 89 degrees 08 minutes 44 seconds East for a distance of 1194.52 feet to a point on the south line of lands now owned by C. Spiker (DR 964-152);

THENCE through said Spiker's lands North 00 degrees 51 minutes 16 seconds East for a distance of 155.05 feet to the centerline of State Route 208 and the principal place of beginning, said point being the southeast corner of lands now owned by G. and N. Jarvis (DR 1144-867);

THENCE along said Jarvis' east line the following five courses:

- 1) North 11 degrees 58 minutes 47 seconds West for a distance of 27.72 feet to an iron pin found;
- 2) North 11 degrees 58 minutes 47 seconds West for a distance of 322.08 feet to an iron pin found;
- 3) North 45 degrees 59 minutes 11 seconds West for a distance of 69.11 feet to an iron pin found;
- 4) North 53 degrees 20 minutes 49 seconds West for a distance of 234.41 feet to an iron pin found;
- 5) North 68 degrees 19 minutes 38 seconds West for a distance of 156.86 feet to an iron pin found on the east line of lands now owned by W. Spiker (DR 1151-799);

thence along said Spiker's east line the following five courses:

- 1) North 43 degrees 32 minutes 49 seconds East for a distance of 73.72 feet to an iron pin found;
- 2) North 43 degrees 21 minutes 04 seconds East for a distance of 536.08 feet to an iron pin found;
- 3) North 29 degrees 21 minutes 52 seconds East for a distance of 328.02 feet to an iron pin found;
- 4) North 19 degrees 55 minutes 09 seconds East for a distance of 258.54 feet to an iron pin found;
- 5) North 14 degrees 29 minutes 39 seconds East for a distance of 310.03 feet to Spiker's northeast corner and the mean high water mark of the Muskingum River, passing an iron pin set at 300.49 feet;

thence along said high water mark of the Muskingum River the following thirty-five courses:

- 1) North 54 degrees 09 minutes 30 seconds East for a distance of 129.48 feet to a point;
- 2) North 47 degrees 17 minutes 06 seconds East for a distance of 277.44 feet to a point;
- 3) North 30 degrees 01 minutes 34 seconds East for a distance of 227.21 feet to a point, from which an iron pin set bears South 10 degrees 42 minutes 31 seconds East 11.68 feet;
- 4) North 08 degrees 45 minutes 03 seconds East for a distance of 243.99 feet to a point;
- 5) North 12 degrees 15 minutes 25 seconds East for a distance of 184.74 feet to a point;
- 6) North 11 degrees 18 minutes 03 seconds East for a distance of 235.37 feet to a point;
- 7) North 12 degrees 27 minutes 03 seconds West for a distance of 93.03 feet to a point;

- 8) North 17 degrees 28 minutes 36 seconds West for a distance of 170.87 feet to a point, from which an iron pin set bears South 66 degrees 50 minutes 28 seconds East 70.14 feet;
- 9) North 25 degrees 50 minutes 02 seconds West for a distance of 190.08 feet to a point;
- 10) North 21 degrees 45 minutes 31 seconds West for a distance of 130.10 feet to a point;
- 11) North 15 degrees 51 minutes 41 seconds West for a distance of 172.98 feet to a point;
- 12) North 21 degrees 48 minutes 09 seconds West for a distance of 192.34 feet to a point, from which an iron pin set bears South 80 degrees 20 minutes 16 seconds East 41.00 feet;
- 13) North 06 degrees 39 minutes 11 seconds West for a distance of 400.73 feet to a point;
- 14) North 03 degrees 17 minutes 21 seconds East for a distance of 168.17 feet to a point;
- 15) North 01 degrees 39 minutes 29 seconds East for a distance of 243.31 feet to a point, from which an iron pin set bears North 88 degrees 18 minutes 56 seconds East 35.50 feet;
- 16) North 09 degrees 09 minutes 43 seconds East for a distance of 379.75 feet to a point;
- 17) North 12 degrees 41 minutes 33 seconds East for a distance of 308.37 feet to a point;
- 18) North 13 degrees 42 minutes 14 seconds East for a distance of 346.21 feet to a point, from which an iron pin set bears South 44 degrees 02 minutes 40 seconds East 25.58 feet;
- 19) North 17 degrees 35 minutes 24 seconds East for a distance of 313.27 feet to a point;
- 20) North 17 degrees 28 minutes 36 seconds East for a distance of 288.75 feet to a point;
- 21) North 12 degrees 48 minutes 26 seconds East for a distance of 95.25 feet to a point;
- 22) North 21 degrees 25 minutes 51 seconds East for a distance of 175.70 feet to a point;
- 23) North 41 degrees 04 minutes 12 seconds East for a distance of 64.36 feet to a point, from which an iron pin set bears South 63 degrees 56 minutes 40 seconds East 66.39 feet;
- 24) North 65 degrees 20 minutes 42 seconds East for a distance of 44.07 feet to a point;
- 25) North 43 degrees 58 minutes 07 seconds East for a distance of 406.06 feet to a point;
- 26) North 41 degrees 08 minutes 52 seconds East for a distance of 165.36 feet to a point;
- 27) North 16 degrees 26 minutes 12 seconds East for a distance of 153.87 feet to a point;
- 28) North 46 degrees 50 minutes 54 seconds East for a distance of 122.07 feet to a point;
- 29) North 55 degrees 15 minutes 07 seconds East for a distance of 117.90 feet to a point, from which an iron pin set bears South 49 degrees 01 minutes 03 seconds East 54.72 feet;
- 30) North 56 degrees 49 minutes 18 seconds East for a distance of 254.95 feet to a point;
- 31) North 61 degrees 59 minutes 55 seconds East for a distance of 122.97 feet to a point;
- 32) North 78 degrees 55 minutes 12 seconds East for a distance of 92.76 feet to a point;
- 33) North 87 degrees 22 minutes 37 seconds East for a distance of 269.46 feet to a point;
- 34) North 89 degrees 15 minutes 42 seconds East for a distance of 113.80 feet to a point;
- 35) North 87 degrees 42 minutes 15 seconds East for a distance of 87.12 feet to the northwest corner of lands now owned by L. and J. Little (DR 593-111);

THENCE along Littles' west line South 07 degrees 47 minutes 25 seconds East for a distance of 1438.23 feet to an axle found on the northwest corner of lands now owned by P. and C. Howard (DR 1093-551), passing an iron pin set at 40.71 feet;

THENCE along Howards' west line South 07 degrees 47 minutes 25 seconds East for a distance of 4180.72 feet to a pipe found on the northeast corner of lands now owned by L. and J. Little (DR 522-227);

THENCE along the north line of lands now owned by L. and J. Little (DR 522-227, DR 1097-217, DR 985-261) the following eight courses:

- 1) South 79 degrees 41 minutes 02 seconds West for a distance of 483.12 feet to an iron pin set;
- 2) South 84 degrees 56 minutes 02 seconds West for a distance of 372.90 feet to an iron pin set on Littles' northwest corner (DR 522-227);

- 3) South 07 degrees 01 minutes 11 seconds East for a distance of 712.04 feet to an iron pin found on Littles' northeast corner (DR 1097-217);
 - 4) South 80 degrees 32 minutes 58 seconds West for a distance of 1320.60 feet to an iron pin found;
 - 5) South 52 degrees 45 minutes 53 seconds West for a distance of 304.09 feet to an iron pin found;
 - 6) North 79 degrees 26 minutes 02 seconds West for a distance of 247.37 feet to an iron pin set;
 - 7) South 34 degrees 56 minutes 37 seconds West for a distance of 986.05 feet to a point in the centerline of State Route 208, passing an iron pin found at 958.55 feet;
 - 8) North 82 degrees 13 minutes 16 seconds West for a distance of 196.71 feet along said State Route 208 centerline to the principal place of beginning;
- containing 343.03 acres, more or less, subject to all legal road right of ways and applicable easements, written or implied.

EXCEPTING from the above described tract, 0.27 acres, more or less and being more particularly described as follows:

Beginning for reference at a stone found on the Northwest Corner of Lot 2 of William McCain's Lots as surveyed and platted by Charles Roberts on March 21, 1814, recorded in Muskingum County Deed Book "D", page 275;

THENCE along the north line of said Lot 2 South 89 degrees 08 minutes 44 seconds East for a distance of 482.20 feet to an iron pin found;

THENCE continuing along said line South 89 degrees 08 minutes 44 seconds East for a distance of 1194.52 feet to a point on the south line of lands now owned by C. Spiker (DR 964-152);

THENCE through said Spiker's lands North 00 degrees 51 minutes 16 seconds East for a distance of 155.05 feet to the centerline of State Route 208, said point being the southeast corner of lands now owned by G. and N. Jarvis (DR 1144-867);

THENCE along said Jarvis' east line the following four courses:

- 1) North 11 degrees 58 minutes 47 seconds West for a distance of 27.72 feet to an iron pin found;
- 2) North 11 degrees 58 minutes 47 seconds West for a distance of 322.08 feet to an iron pin found;
- 3) North 45 degrees 59 minutes 11 seconds West for a distance of 69.11 feet to an iron pin found;
- 4) North 53 degrees 20 minutes 49 seconds West for a distance of 234.41 feet to an iron pin found;

THENCE through lands now owned by Barbara A. Lentz (DR 1052-482) North 09 degrees 43 minutes 28 seconds East for a distance of 102.48 feet to an iron pin set and the principal place of beginning;

THENCE around an existing cemetery the following four courses:

- 1) North 38 degrees 41 minutes 14 seconds East for a distance of 158.13 feet to an iron pin set;
- 2) South 17 degrees 24 minutes 11 seconds East for a distance of 107.75 feet to an iron pin set;
- 3) South 34 degrees 50 minutes 18 seconds West for a distance of 99.88 feet to an iron pin set;
- 4) North 50 degrees 20 minutes 02 seconds West for a distance of 96.14 feet to the principal place of beginning,

containing 0.27 acres, more or less, subject to all legal road right of ways and applicable easements, written or implied.

TRACT TWO: Beginning for reference at a stone found on the Northwest Corner of Lot 2 of William McCain's Lots as surveyed and platted by Charles Roberts on March 21, 1814, recorded in Muskingum County Deed Book "D", page 275;

THENCE along the north line of said Lot 2 South 89 degrees 08 minutes 44 seconds East for a distance of 482.20 feet to an iron pin found;

THENCE continuing along said line South 89 degrees 08 minutes 44 seconds East for a distance of 1194.52 feet to a point on the south line of lands now owned by C. Spiker (DR 964-152);

THENCE through said Spiker's lands North 00 degrees 51 minutes 16 seconds East for a distance of 155.05 feet to the centerline of State Route 208, said point being the southeast corner of lands now owned by G. and N. Jarvis (DR 1144-867);

THENCE along said Jarvis' east line the following five courses:

- 1) North 11 degrees 58 minutes 47 seconds West for a distance of 27.72 feet to an iron pin found;
- 2) North 11 degrees 58 minutes 47 seconds West for a distance of 322.08 feet to an iron pin found;
- 3) North 45 degrees 59 minutes 11 seconds West for a distance of 69.11 feet to an iron pin found;
- 4) North 53 degrees 20 minutes 49 seconds West for a distance of 234.41 feet to an iron pin found;
- 5) North 68 degrees 19 minutes 38 seconds West for a distance of 156.86 feet to an iron pin found on the east line of lands now owned by W. Spiker (DR 1151-799);

thence along said Spiker's east line the following five courses:

- 1) North 43 degrees 32 minutes 49 seconds East for a distance of 73.72 feet to an iron pin found;
- 2) North 43 degrees 21 minutes 04 seconds East for a distance of 536.08 feet to an iron pin found;
- 3) North 29 degrees 21 minutes 52 seconds East for a distance of 328.02 feet to an iron pin found;
- 4) North 19 degrees 55 minutes 09 seconds East for a distance of 258.54 feet to an iron pin found;
- 5) North 14 degrees 29 minutes 39 seconds East for a distance of 310.03 feet to Spiker's northeast corner and the mean high water mark of the Muskingum River, passing an iron pin found at 300.49 feet;

thence along said high water mark of the Muskingum River the following twenty-three courses:

- 1) North 54 degrees 09 minutes 30 seconds East for a distance of 129.48 feet to a point;
- 2) North 47 degrees 17 minutes 06 seconds East for a distance of 277.44 feet to a point;
- 3) North 30 degrees 01 minutes 34 seconds East for a distance of 227.21 feet to a point, from which an iron pin set bears South 10 degrees 42 minutes 31 seconds East 11.68 feet;
- 4) North 08 degrees 45 minutes 03 seconds East for a distance of 243.99 feet to a point;
- 5) North 12 degrees 15 minutes 25 seconds East for a distance of 184.74 feet to a point;
- 6) North 11 degrees 18 minutes 03 seconds East for a distance of 235.37 feet to a point;
- 7) North 12 degrees 27 minutes 03 seconds West for a distance of 93.03 feet to a point;
- 8) North 17 degrees 28 minutes 36 seconds West for a distance of 170.87 feet to a point, from which an iron pin set bears South 66 degrees 50 minutes 28 seconds East 70.14 feet;
- 9) North 25 degrees 50 minutes 02 seconds West for a distance of 190.08 feet to a point;
- 10) North 21 degrees 45 minutes 31 seconds West for a distance of 130.10 feet to a point;
- 11) North 15 degrees 51 minutes 41 seconds West for a distance of 172.98 feet to a point;
- 12) North 21 degrees 48 minutes 09 seconds West for a distance of 192.34 feet to a point, from which an iron pin set bears South 80 degrees 20 minutes 16 seconds East 41.00 feet;
- 13) North 06 degrees 39 minutes 11 seconds West for a distance of 400.73 feet to a point;
- 14) North 03 degrees 17 minutes 21 seconds East for a distance of 168.17 feet to a point;
- 15) North 01 degrees 39 minutes 29 seconds East for a distance of 243.31 feet to a point, from

- which an iron pin set bears North 88 degrees 18 minutes 56 seconds East 35.50 feet;
- 16) North 09 degrees 09 minutes 43 seconds East for a distance of 379.75 feet to a point;
 - 17) North 12 degrees 41 minutes 33 seconds East for a distance of 308.37 feet to a point;
 - 18) North 13 degrees 42 minutes 14 seconds East for a distance of 346.21 feet to a point, from which an iron pin set bears South 44 degrees 02 minutes 40 seconds East 25.58 feet;
 - 19) North 17 degrees 35 minutes 24 seconds East for a distance of 313.27 feet to a point;
 - 20) North 17 degrees 28 minutes 36 seconds East for a distance of 288.75 feet to a point;
 - 21) North 12 degrees 48 minutes 26 seconds East for a distance of 95.25 feet to a point;
 - 22) North 21 degrees 25 minutes 51 seconds East for a distance of 175.70 feet to a point;
 - 23) North 41 degrees 04 minutes 12 seconds East for a distance of 64.36 feet to a point, from which an iron pin set bears South 63 degrees 56 minutes 40 seconds East 66.39 feet;
- thence crossing a channel of the Muskingum River North 56 degrees 48 minutes 05 seconds West 124.33 feet to the principal place of beginning;

THENCE along the mean high water mark around an island the following six courses:

- 1) North 22 degrees 45 minutes 19 seconds East for a distance of 245.47 feet to a point;
- 2) North 36 degrees 03 minutes 50 seconds East for a distance of 260.59 feet to a point;
- 3) North 70 degrees 18 minutes 10 seconds East for a distance of 213.73 feet to a point;
- 4) South 18 degrees 23 minutes 20 seconds West for a distance of 107.90 feet to a point;
- 5) South 41 degrees 02 minutes 32 seconds West for a distance of 264.25 feet to a point;
- 6) South 49 degrees 24 minutes 43 seconds West for a distance of 318.71 feet to the principal place of beginning,

containing 1.44 acres, more or less, subject to all legal road right of ways and applicable easements, written or implied.

Iron pins set are 5/8 inch by 30 inch long rebar with plastic identification caps.

Bearings are based on Ohio State Plane Grid Coordinate System, South Zone, NAD 83, as per GPS observations of Tri-Valley Wildlife Boundary Monuments.

This description is written from an actual field survey completed on August 20, 2003 by Jack D. Newcome, Reg. No. 7321.

OFFICE COPY

NOT RECORDABLE 08/20/03
Date

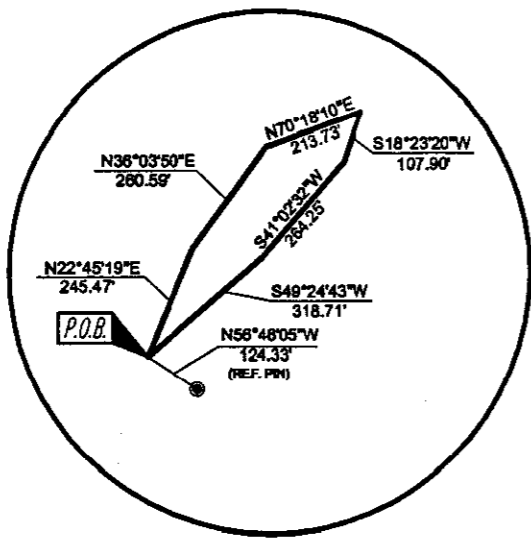
Jack D. Newcome
Reg. No. 7321

Parcel No.

All of: 38-38-20-02-01-000 (342.76 ac.) (Tract One)
(1.44 ac.) (Tract Two)

Total Acreage: (344.20 ac.)

DESCRIPTION APPROVED
FOR AUDITOR'S TRANSFER
BY [Signature]
8-28-2003



DETAIL "A"

LEGEND

- Iron Pin Set, 5/8" rebar
- Iron Pin Found
- Pipe Found
- Axle Found
- ⊠ Stone Found

SITUATED IN

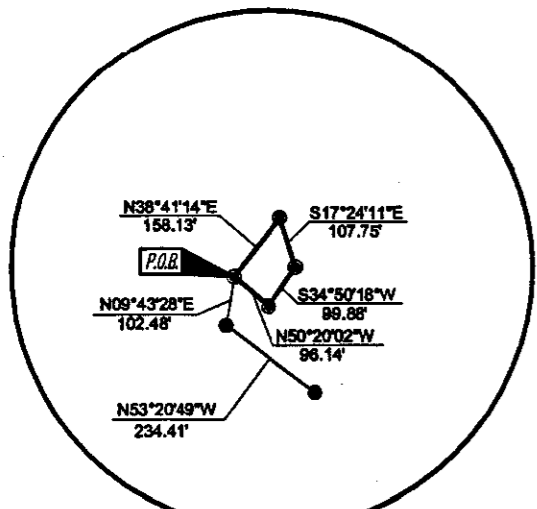
The State of Ohio, County of Muskingum
Township of Madison, Quarter Township 2,
T3, R7, U.S.M.L.

BASIS OF BEARING

Bearings are based on Ohio State Plane Grid
Coordinate System, South Zone, NAD 83, as per
GPS Observations of Tri-Valley Wildlife Boundary
Monuments.

REFERENCES

- DR 1052-482
- DR 985-261
- DR 1097-217
- DR 1151-799
- DR 1144-867
- DR 1143-773
- DR 964-152
- DR 1038-513
- DR 522-227
- DR 1083-581



DETAIL "B"

Stone Found at the Northwest Corner
of Lot 2 of Wilson McGee Lots as
surveyed by Charles Roberts on March 21, 1914,
as per plat in Deed Book 'D', Page 275.

Tract Two
±1.44 Acres
SEE DETAIL "A"

Muskingum
River

Barbara A. Lentz
DR 1052-482
Tract One
±343.03 Acres
±0.27 Acres
±342.76 Acres

L. & J. Little
DR 593-111

P. & C. Howard
DR 1093-551

L. & J. Little
DR 977-920

L. & J. Little
DR 522-227

W. Spiker
DR 1151-799

Cemetery
(Exception)
±0.27 Acres
SEE DETAIL "B"

L. & J. Little
DR 1097-217

G. & N. Jarvis
DR 1144-867

S. & J. Little
DR 985-261

C. Spiker
DR 964-152

PARCEL NOS.

All of: 38-38-20-02-01-000(±342.76 ac.)(Tract One)
(±1.44 ac.)(Tract Two)
(±344.20 ac.) Total

PROCESSED AND
RECORDED
BY *WLB*
8-18-2003

**OFFICE COPY
NOT RECORDABLE**
Jack D. Newcome
Reg. Surveyor No. 7321

GRAPHIC SCALE



(IN FEET)
1 inch = 400 ft.

**BARBARA LENTZ
MADISON TOWNSHIP
MUSKINGUM COUNTY
PROPERTY SURVEY**

Linn Engineering, Inc.
Civil Engineering Consultants
P.O. Box 2086 Zanesville, Ohio 43702-2086 740-452-7434



Sheet No.	Project No.	By	Date	Scale	Revisions	By	Date
1	98-50-LENZ	Designed	JDN	Horiz. 1"=400'			
		Drawn	VHC	Vert. 1"=N/A			
		Checked	JDN	Field Book No.			
		Approved	THL				

G:\SURVEY-FILES\Muskingum\Madison Twp\38-20-02-01-000\1052-482\1052-482-01-000.dwg, 08/25/03 07:50:39 AM, V11C