

38-20-02-05

380 DRESDEN ADAMSVILLE RD

38-20-03-05

**BOWMAN & ASSOCIATES**  
59 SECOND STREET  
FRAZEYSBURG, OHIO 43822  
PH./FAX (614) 828-2204

**SURVEY DESCRIPTION  
FOR  
ATHERN SHEETS**

**AUDITORS PARCEL**

#38-20-02-05-000 (PART, 172.021 Acres)

#38-20-02-05-000 (ALL, 9.897 Acres)

3

Situated in Quarter Township 2, and lot #2, of quarter township 3, T-3-N, R-7-W, U.S.M.L., Madison Township, Muskingum County, Ohio. Being part of lands of Athern Sheets as conveyed in Deed book 1119 page 595 of the Muskingum County deed records and being described as follows:

Beginning at a stone found in Northwest corner of lot 2 of C. Roberts Survey (D.B. "D" Pg. 275) in Quarter Township 3, located on the South line of Quarter Township 2;

- thence, S.01°03'38"W. a distance of 895.51 feet along the east line of the west line of lot 2 to a set rebar on the Northwest corner of the lands, now or formerly, owned by Muskingum Mining (767/269);
- thence, N.89°49'57"E. a distance of 481.69 feet along said Mining lands to a found iron pin on the Southwest corner of the lands, now or formerly, owned by D. Untied, Jr. (1034/537);
- thence, N.01°03'38"E. a distance of 894.84 feet along said Untied lands to a found iron pin on the South line of Quarter Township 2;
- thence, N.89°54'44"E. a distance of 689.02 feet along said Quarter Township to a set rebar on the corner of the lands, now or formerly, owned by C. Spiker (964/152);
- thence, N.32°23'06"E. a distance of 280.47 feet along said Spiker lands to a set rebar;
- thence, N.12°21'54"W. a distance of 77.05 feet along said Spiker lands to a point in the center of State Route 208;
- thence, N.64°42'07"W. a distance of 162.33 feet along the center of said road to a point;
- thence, N.76°08'09"W. a distance of 131.57 feet along the center of said road to a point;
- thence, N.81°57'16"W. a distance of 158.88 feet along the center of said road to a point;
- thence, N.80°58'38"W. a distance of 323.48 feet along the center of said road to a point;
- thence, N.81°42'40"W. a distance of 288.70 feet along the center of said road to a point on the Southwest corner of the lands, now or formerly, owned by J. Bash (871/227)

A. Sheets

- thence, N.06°08'20"E. a distance of 176.71 feet along said Bash lands to a found stone, passing a found iron pin at 40.60 feet;
- thence, N.83°51'01"E. a distance of 783.81 feet along said Bash lands and the lands, now of formerly, owned by E. Lukander (895/125) to a found stone on the west line of the lands, now or formerly, owned by A. Sheets (1046/124);
- thence, N.40°06'54"W. a distance of 610.77 feet along said Sheets lands to a set rebar;
- thence, N.25°21'55"W. a distance of 228.23 feet along said Sheets lands to a point on the low water mark of The Muskingum River;
- thence, S.85°40'55"W. a distance of 783.08 feet along said river to a point;
- thence, N.85°51'27"W. a distance of 440.27 feet along said river to a point;
- thence, N.47°10'40"W. a distance of 670.33 feet along said river to a point;
- thence, N.26°51'55"W. a distance of 784.86 feet along said river to a point;
- thence, N.46°38'20"W. a distance of 160.77 feet along said river to a point;
- thence, N.60°42'17"W. a distance of 181.24 feet along said river to a point;
- thence, N.87°10'35"W. a distance of 427.98 feet along said river to a point;
- thence, S.67°03'49"W. a distance of 420.75 feet along said river to a point;
- thence, S.43°12'38"W. a distance of 328.86 feet along said river to a point;
- thence, S.21°41'54"W. a distance of 992.75 feet along said river to a point;
- thence, S.06°16'36"W. a distance of 386.65 feet along said river to a point;
- thence, S.19°45'02"E. a distance of 439.75 feet along said river to a point;
- thence, S.28°24'30"E. a distance of 785.60 feet along said river to a point; on the South line of Quarter Township 2;
- thence, N.89°54'44"E. a distance of 1,048.43 feet along quarter township line to a point in the center of State Route 208, passing a set rebar at 100.00 feet and at 1018.43 feet;
- thence, N.63°21'30"E. a distance of 103.22 feet along said Route and along a 7.612 acre parcel to a point;
- thence, N.36°37'40"W. a distance of 180.63 feet through the lands of A. Sheets (1119/595) and long said 7.612 acre parcel to a set rebar, passing a set rebar at 22.65 feet;

- thence, N.66°31'16"E. a distance of 750.67 feet through the lands of A. Sheets (1119/595) and long said 7.612 acre parcel to a set rebar;
- thence, S.29°24'08"E. a distance of 165.90 feet through the lands of A. Sheets (1119/595) and long said 7.612 acre parcel to a point in the center of State Route 208, passing a set rebar at 137.08 feet;
- thence, N.71°04'44"E. a distance of 91.57 feet through the lands of A. Sheets (1119/595) and along said 7.612 acre parcel to a point in the center of State Route 208;
- thence, S.33°26'18"E. a distance of 299.95 feet through the lands of A. Sheets (1119/595) and along said 7.612 acre parcel to a set rebar, passing a set rebar at 40.82 feet;
- thence, S.12°40'33"E. a distance of 126.69 feet through the lands of A. Sheets (1119/595) and along said 7.612 acre parcel to a set rebar on the South line of Quarter Township 2;
- thence, N.89°54'44"E. a distance of 611.41 feet along said township line to the point of beginning.

The above described parcel contains 181.918 acres, more or less, (172.021 acres in Quarter Township 2, and 9.897 acres in Quarter Township 3) subject to all legal easements and right of ways. All set rebars are 5/8" x 30" rebars with I.D. caps. North is based upon an assumed meridian.

Description was prepared from an actual survey by Bowman & Associates, Stephen M. Bowman, P.S.#7135. January, 1997

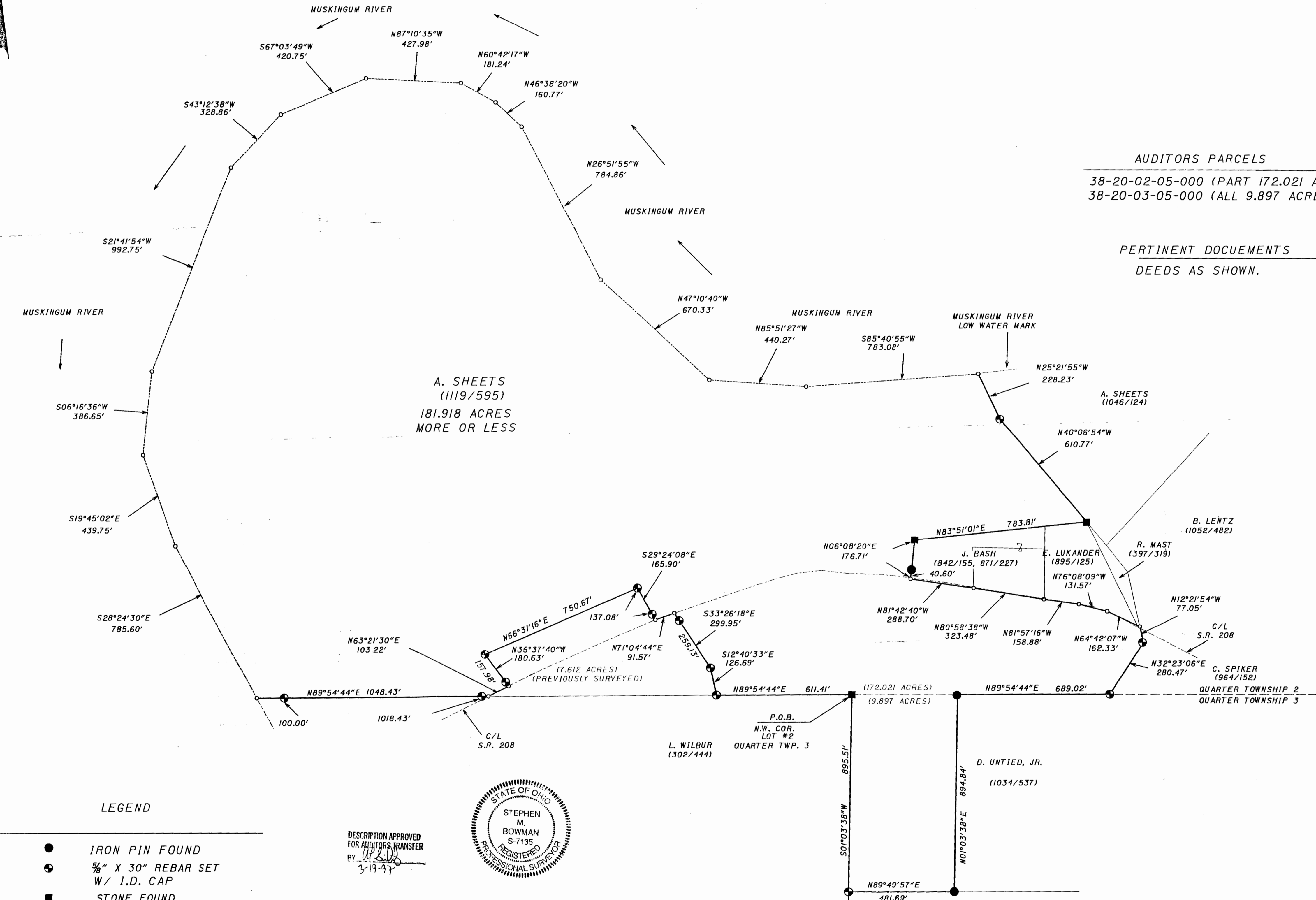
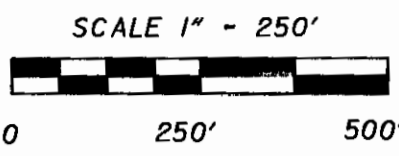
**OFFICE COPY  
NOT RECORDABLE**

DESCRIPTION APPROVED  
FOR AUDITORS TRANSFER  
BY [Signature]  
3-19-97

SURVEY PLAT FOR ATHERN SHEETS

SITUATED IN QUARTER TOWNSHIP 2 AND LOT #2 OF QUARTER TOWNSHIP 3, T-3-N, R-7-W, U.S.M.L., MADISON TOWNSHIP, MUSKINGUM COUNTY, OHIO. BEING PART OF THE LANDS OF ATHERN M. SHEETS AS LAST CONVEYED IN DEED BOOK 1119 PAGE 595 OF THE MUSKINGUM COUNTY DEED RECORDS.

NORTH IS BASED UPON AN ASSUMED MERIDIAN



AUDITORS PARCELS

38-20-02-05-000 (PART 172.021 ACRES)  
38-20-03-05-000 (ALL 9.897 ACRES)

PERTINENT DOCUMENTS  
DEEDS AS SHOWN.

A. SHEETS  
(1119/595)  
181.918 ACRES  
MORE OR LESS

A. SHEETS  
(1046/124)

B. LENTZ  
(1052/482)

R. MAST  
(397/319)

C/L  
S.R. 208

C. SPIKER  
(964/152)

P.O.B.  
N.W. COR.  
LOT #2  
QUARTER TWP. 3

L. WILBUR  
(302/444)

D. UNTIED, JR.  
(1034/537)

(172.021 ACRES)  
(9.897 ACRES)

QUARTER TOWNSHIP 2  
QUARTER TOWNSHIP 3

LEGEND

- IRON PIN FOUND
- ⊕ 5/8" X 30" REBAR SET W/ I.D. CAP
- STONE FOUND
- POINT
- CENTERLINE
- - - - - LOW WATER MARK
- PROPERTY LINE
- - - - - QUARTER TOWNSHIP LINE

DESCRIPTION APPROVED FOR AUDITORS TRANSFER  
BY: [Signature]  
3-19-97



I CERTIFY THIS DRAWING WAS PREPARED FROM AN ACTUAL FIELD SURVEY I CONDUCTED

OFFICE COPY  
NOT RECORDABLE

STEPHEN M. BOWMAN, P.S. #7135

BOWMAN & ASSOCIATES

59 SECOND STREET  
FRAZEYSBURG, OHIO 43822  
PHONE/FAX 614-828-2204

JOB: C-95170 DATE: 3-19-97