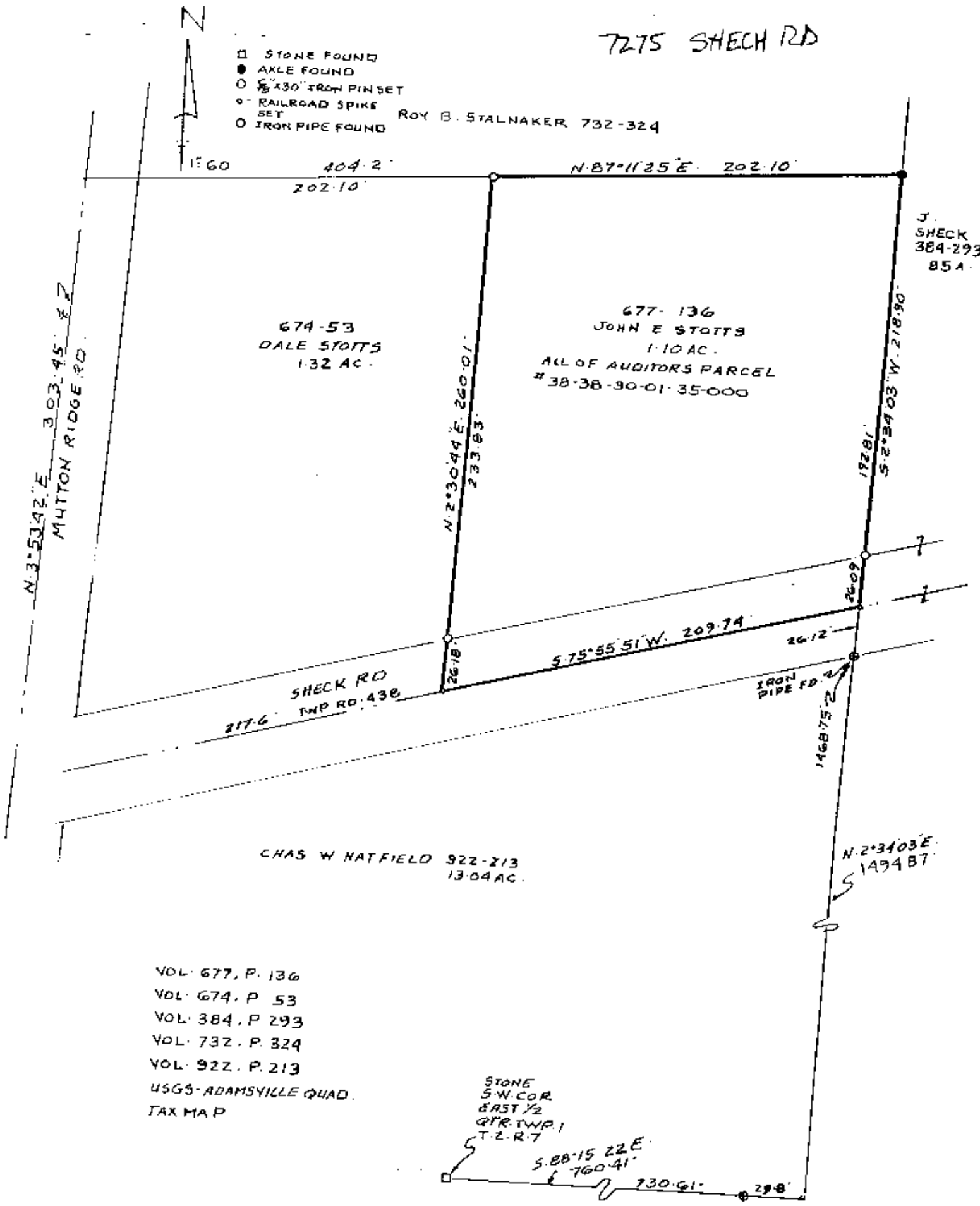


7275 SHECH RD

- STONE FOUND
 - AXLE FOUND
 - 1/2" 130" IRON PIN SET
 - RAILROAD SPIKE SET
 - IRON PIPE FOUND
- ROY B. STALNAKER 732-324



VOL. 677, P. 136
 VOL. 674, P. 53
 VOL. 384, P. 293
 VOL. 732, P. 324
 VOL. 922, P. 213
 USGS-ADAMSVILLE QUAD.
 TAX MAP

STONE
 S.W. COR
 EAST 1/2
 QTR. TWP. 1
 T. 2, R. 7
 S. 88° 15' 22" E.
 760.41'
 730.61' 298'

MAP SHOWING SURVEY OF 1.10 AC.
 JOHN STOTTS PROPERTY VOL. 677-136
 IN THE EAST ONE HALF OF QTR. TWP. 1
 TWP. 2, RA. 7 USML. MADISON TWP.
 MUSKINGUM COUNTY, OHIO

DESCRIPTION APPROVED
 for Auditor's transfer

By J. Y. Mauld
 9-25-86

RICHARD MAX GRAVES
 REGISTERED SURVEYOR #5792
 2925 KENLO WOODS DR.

OFFICE COPY
 NOT RECORDABLE
 SEPTEMBER 23, 1986