

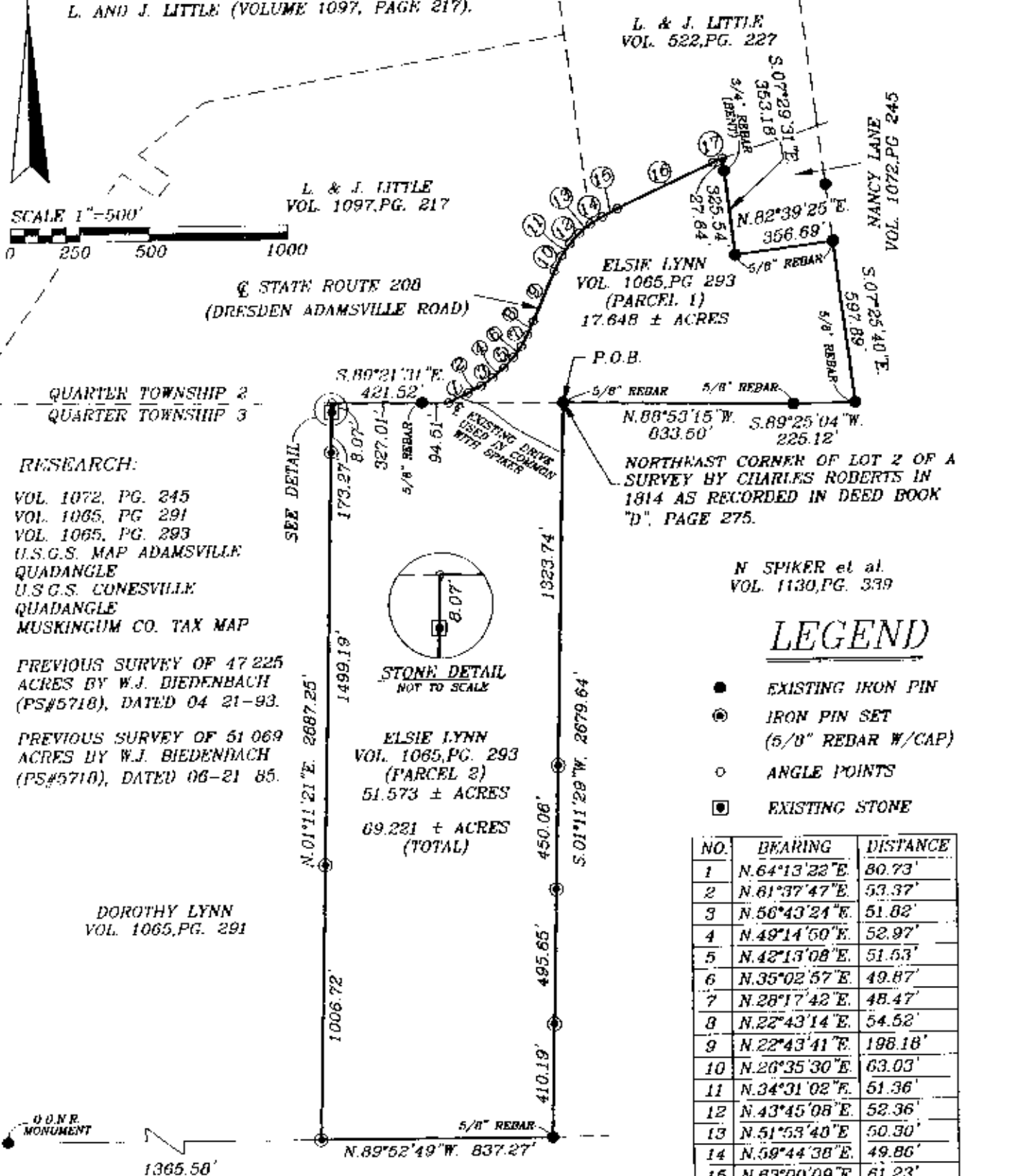
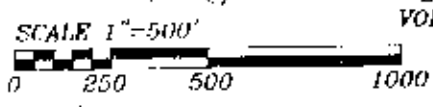
SURVEY FOR ELSIE LYNN

AUDITORS PARCEL NUMBERS

30-38-30-03 06-000 (ALL) - 51.573 ± ACRES
 38-38-30-02-08-000 (ALL) - 17.648 ± ACRES

BEING A PART OF QUARTER TOWNSHIP 2 AND A PART OF LOT 2 OF A SURVEY BY CHARLES ROBERTS, AS RECORDED IN DEED BOOK "D", PAGE 275 OF THE MUSKINGUM COUNTY DEED RECORDS, IN QUARTER TOWNSHIP 3, TOWNSHIP 3, RANGE 7, OF THE UNITED STATES MILITARY LANDS, MADISON TOWNSHIP, MUSKINGUM COUNTY, OHIO.

THE BEARINGS ARE BASED ON THE PREVIOUS SURVEY OF 47.225 MORE OR LESS ACRES CONVEYED TO L. AND J. LITTLE (VOLUME 1097, PAGE 217).



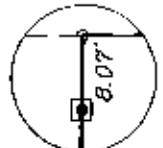
RESEARCH:

VOL. 1072, PG. 245
 VOL. 1065, PG. 291
 VOL. 1065, PG. 293
 U.S.G.S. MAP ADAMSVILLE QUADANGLE
 U.S.G.S. CONESVILLE QUADANGLE
 MUSKINGUM CO. TAX MAP

PREVIOUS SURVEY OF 47.225 ACRES BY W.J. BIEDENBACH (PS#5718), DATED 04-21-93.

PREVIOUS SURVEY OF 51.069 ACRES BY W.J. BIEDENBACH (PS#5718), DATED 06-21-85.

SEE DETAIL



STONE DETAIL NOT TO SCALE

ELSI LYNN
 VOL. 1065, PG. 293
 (PARCEL 2)
 51.573 ± ACRES
 69.221 ± ACRES (TOTAL)

N SPIKER et al.
 VOL. 1130, PG. 339

LEGEND

- EXISTING IRON PIN
- ⊙ IRON PIN SET (5/8" REDAR W/CAP)
- ANGLE POINTS
- EXISTING STONE

NO.	BEARING	DISTANCE
1	N.64°13'22"E	80.73'
2	N.61°37'47"E	53.37'
3	N.56°43'24"E	51.02'
4	N.48°14'50"E	52.97'
5	N.42°13'08"E	51.53'
6	N.35°02'57"E	49.87'
7	N.28°17'42"E	48.47'
8	N.22°43'14"E	54.52'
9	N.22°43'41"E	198.18'
10	N.26°35'30"E	63.03'
11	N.34°31'02"E	51.36'
12	N.43°45'08"E	52.36'
13	N.51°53'40"E	50.30'
14	N.59°44'38"E	49.86'
15	N.63°00'09"E	61.23'
16	N.64°26'45"E	383.07'
17	N.68°03'05"E	36.94'

STATE OF OHIO
 DEPARTMENT OF NATURAL RESOURCES
 VOL. 1130, PG. 776

DESCRIPTION APPROVED FOR AUDITORS' FILE BY: *[Signature]* 12-8-99

I HEREBY CERTIFY TO THE BEST OF MY KNOWLEDGE AND BELIEF THE ABOVE PLAT AND SURVEY TO BE CORRECT AS PREPARED BY ME, THIS 12-8-99.

OFFICE COPY
 NOT RECORDABLE

W.J. BIEDENBACH
 REGISTERED SURVEYOR #5718

W.J. BIEDENBACH & ASSOC.
 SURVEYING & MAPPING
 ZANESVILLE, OHIO
 (740) 453-4050

DRAWN BY: AJS	DATE: 12-01-99
SCALE: 1"=500'	CHECKED BY: WJB
JOB NO: 4507	DRAWING NO: D\4507\4507