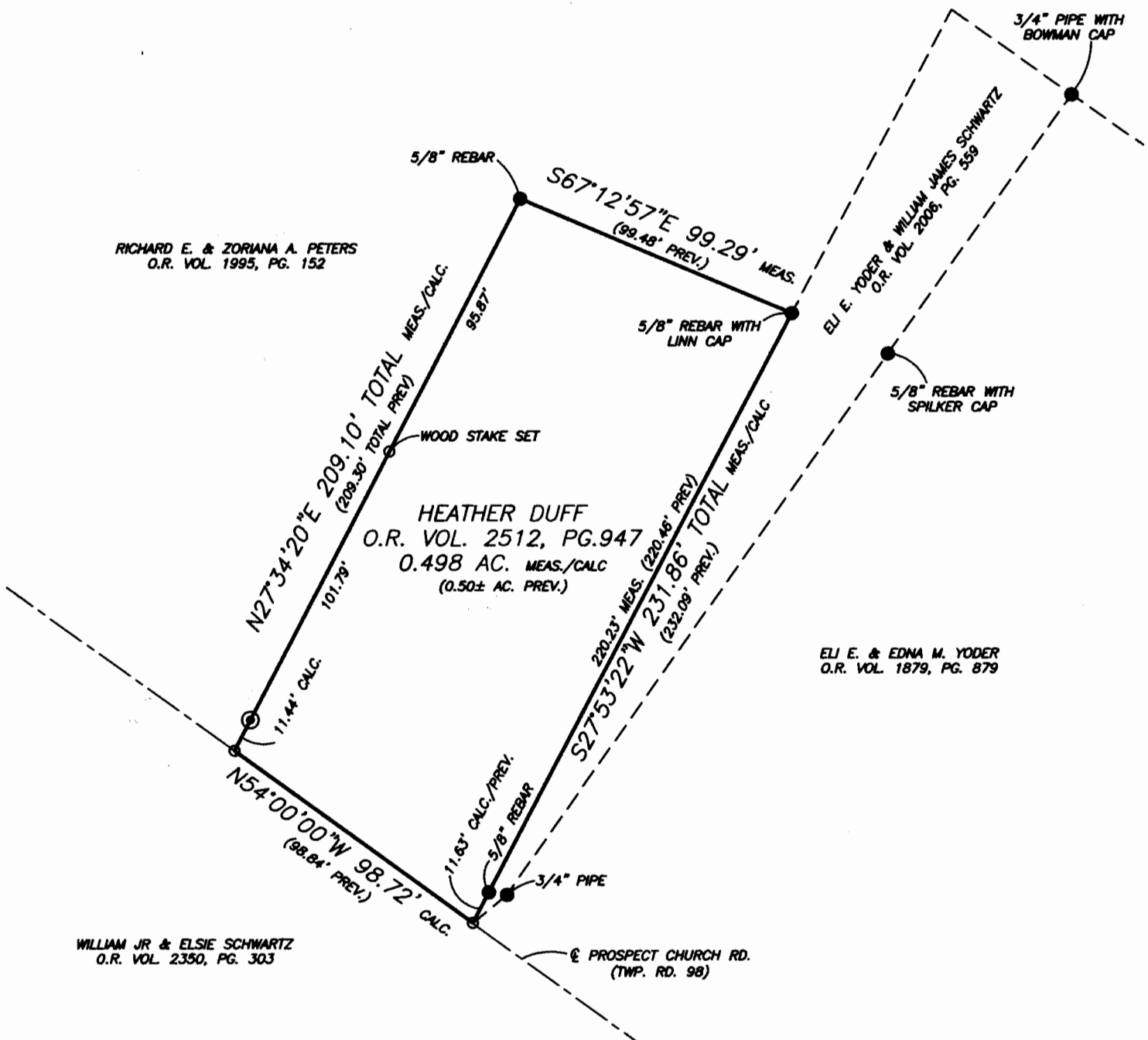


SKETCH OF SURVEY FOR HEATHER DUFF

AUDITORS PARCEL NUMBER
38-38-70-21-25-001

BEING THE TRACT CONVEYED TO HEATHER DUFF IN O.R. VOLUME 2512, PAGE 947 OF THE MUSKINGUM COUNTY OFFICIAL RECORDS, SITUATED IN SECTION 21, TOWNSHIP 3, RANGE 7, OF THE UNITED STATES MILITARY LANDS, MADISON TOWNSHIP, MUSKINGUM COUNTY, OHIO.

BEARINGS ARE BASED ON THE EAST LINE OF A PREVIOUS SURVEY OF A 0.50 MORE OR LESS ACRES TRACT COMPLETED OCTOBER 22, 1988 BY T.H. LINN PS7113.



RESEARCH

DEEDS AS SHOWN
 PREVIOUS SURVEY OF A 0.50± AC. TRACT
 COMPLETED OCT. 22, 1988 BY T.H. LINN PS7113
 PREVIOUS SURVEY OF A 5.063± AC. TRACT
 COMPLETED JULY 27, 1992 BY S.M. BOWMAN PS7135
 PREVIOUS SURVEY OF A 35.650± AC. TRACT
 COMPLETED OCT. 24, 2005 BY J.T. SPILKER PS5862
 PREVIOUS SURVEY OF A 36.773± AC. TRACT
 COMPLETED NOV. 29, 2005 BY J.T. SPILKER PS5862
 PREVIOUS SURVEY OF A 74.108± AC. TRACT
 COMPLETED AUG. 10, 1992 BY S.M. BOWMAN PS7135

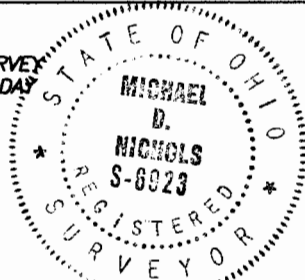
LEGEND

- EXISTING IRON PIN
- ⊙ IRON PIN SET (5/8" REBAR W/CAP)
- ANGLE POINTS

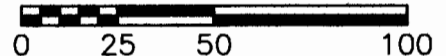
I HEREBY CERTIFY TO THE BEST OF MY KNOWLEDGE AND BELIEF THE ABOVE PLAT AND SURVEY TO BE CORRECT AS PREPARED BY ME, THIS 24th DAY OF FEBRUARY, 2014, FROM A SURVEY COMPLETED ON THE DATE OF FEBRUARY, 2014.

**OFFICE COPY
NOT RECORDABLE**

MICHAEL D. NICHOLS
REGISTERED SURVEYOR #6923



SCALE 1"=50'



BASELINE SURVEYING, INC.

3010 EAST PIKE, ZANESVILLE, OHIO 43701
phone: 740-453-4850, fax: 740-450-1000, email: BEI@rohio.com

DRAWN BY: JWL

DATE: 02-24-14

SCALE: 1"=50'

CHECKED BY: MDN

JOB NO: 5689

DRAWING NO:
Z:\5689\5689.dwg