

Being a part of Quarter Township two, Township two, Range seven, United States Military Lands, Madison Township, Muskingum County, Ohio and being further described as follows:

Commencing at a point marked by an existing concrete monument at 50 feet left of station 10+33.31 at State Route 666 as shown on the centerline plat as recorded in Plat Book volume 14, page 61, of the Muskingum County Plat Records; thence North 80 degrees 48 minutes 06 seconds East 30.00 feet to a point in the center of said State Route 666; thence South 09 degrees 11 minutes 54 seconds East 3.51 feet to a point in the center of said State Route 666 at the intersection of relocated Township Road 395, said point being the place of beginning of this tract; thence South 30 degrees 14 minutes 03 seconds West 91.30 feet to a point on the low-water line of the Muskingum River; thence North 09 degrees 45 minutes 52 seconds West 143.08 feet along the said low-water line of the Muskingum River to a point; thence South 88 degrees 36 minutes 30 seconds East 874.70 feet to a point in the center of Township Road 395 (Old Ferry Road), passing points marked by iron pins at 80.81 feet, 183.81 feet and 849.41 feet; thence following the centerline of said Township Road number 395 (Old Ferry Road) the next 10 courses and distances:

- 1) South 53 degrees 03 minutes 32 seconds West 57.52 feet to a point,
- 2) South 21 degrees 22 minutes 12 seconds West 72.39 feet to a point,
- 3) South 13 degrees 11 minutes 53 seconds West 84.93 feet to a point,
- 4) South 21 degrees 03 minutes 38 seconds West 57.76 feet to a point,
- 5) South 27 degrees 05 minutes 43 seconds West 46.03 feet to a point,
- 6) South 36 degrees 04 minutes 48 seconds West 47.94 feet to a point, said point being North 29 degrees 23 minutes 36 seconds West 18.09 feet from a point marked by an iron pin;
- 7) South 45 degrees 04 minutes 41 seconds West 68.49 feet to a point,
- 8) South 56 degrees 17 minutes 38 seconds West 51.20 feet to a point,
- 9) South 67 degrees 17 minutes 42 seconds West 31.51 feet to a point,
- 10) South 76 degrees 13 minutes 38 seconds West 93.10 feet to a point, said point being North 00 degrees 19 minutes 23 seconds East 20.30 feet from a point marked by an iron pin,
- 11) North 83 degrees 02 minutes 51 seconds West 66.73 feet to a point,
- 12) North 72 degrees 47 minutes 24 seconds West 92.77 feet to a point,
- 13) with a curve to the right having a radius of 150.78 feet (chord bearing North 40 degrees 16 minutes 03 seconds West 160.00 feet) an arc distance of 163.66 feet to a point;
- 14) North 08 degrees 12 minutes 05 seconds West 98.00 feet to a point,
- 15) with a curve to the left having a radius of 60.00 feet (chord bearing North 45 degrees 41 minutes 54 seconds West 69.69 feet) an arc distance of 74.33 feet to a point;
- 16) North 79 degrees 11 minutes 53 seconds West 86.19 feet to the place of beginning.

Containing 5.610 more or less acres, subject to all legal road right-of-ways of State Route 666 and Township Road number 395.

I hereby certify the above description to be correct as prepared by me this 1st day of December 1981.

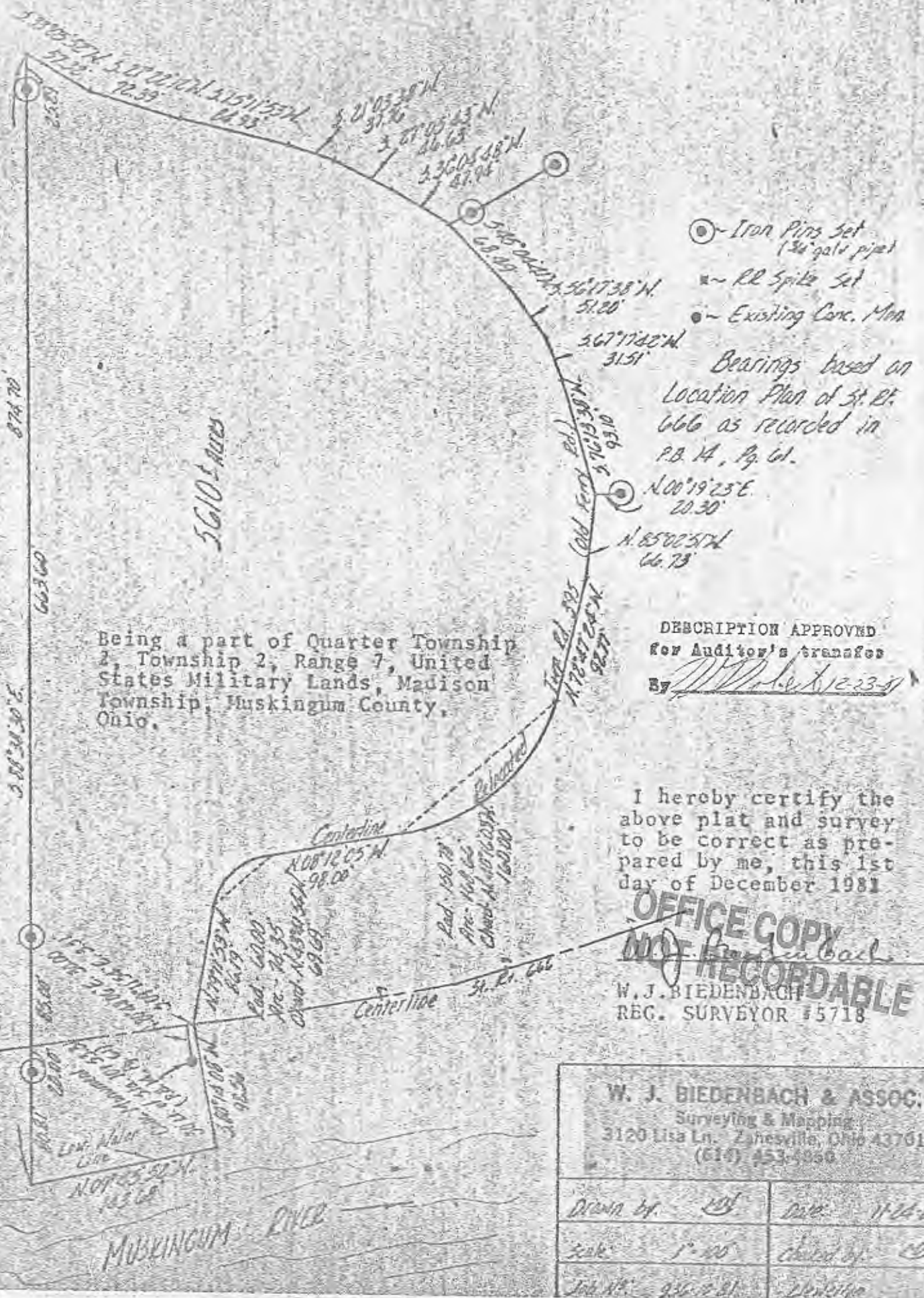
**OFFICE COPY**  
**NOT RECORDABLE**  
W. J. BIERENBACH  
REG. SURVEYOR #5718  
956-10-81  
LEWELLYN

DESCRIPTION APPROVED  
for Auditor's transfer  
BY *William A. Smith* 12-23-81

**OFFICE COPY**  
**NOT RECORDABLE**

38-80-02-07

N/A



**OFFICE COPY  
NOT RECORDABLE**