

Description of Parcel No. 2

Situated in the State of Ohio, County of Muskingum, Township of Meigs, being in the southeast quarter of the southeast quarter of Section 21, Range 11 West, Township 12 North, of "The Congress Lands East of The Scioto River" and being bounded and described as follows:

Commencing for reference at an iron pin set at the southeast corner of Section 21 (Note: Reference bearing on the east line of Section 21 used as South 03°13'54" East.);

thence, with the east line of Section 21 and the west line of a 164.064 acres tract as conveyed to Gary Davis by Deed Volume 979, Page 77 of the Muskingum County Recorder's Office, North 03°13'54" West a distance of 1,350.11 feet to an iron pin set at the northeast corner of the southeast quarter of the southeast quarter of Section 21;

thence, with the quarter-quarter section line and the south line of a 41.11 acres tract as conveyed to Gary Davis by Deed Volume 979, Page 77 of the Muskingum County Recorder's Office, South 87°52'20" West a distance of 614.30 feet to an iron pin set, being THE TRUE POINT OF BEGINNING for this description;

thence, from said Point of Beginning leaving the quarter-quarter section line, South 02°31'18" West a distance of 1,352.59 feet to an iron pin set in the south line of Section 21, passing over the centerline of Township Road No. 219 (Drake and Martin Road) at a distance of plus 1,296.59 feet and passing through two iron pins set at distances of plus 1,174.24 feet and plus 1,274.24 feet, respectively;

thence, with the south line of Section 21 and the north line of a 40.82 acres tract as conveyed to The Ohio Power Company by Deed Volume 554, Page 830 of the Muskingum County Recorder's Office, South 88°00'12" West a distance of 281.39 feet to a point in or near the centerline of Township Road No. 219;

thence, leaving the section line, North 00°10'18" West a distance of 1,348.26 feet to an iron pin set in the north line of the southeast quarter of the southeast quarter of Section 21, passing through two iron pins set at distances of plus 27.18 feet and plus 127.18 feet, respectively;

thence, with the quarter-quarter section line and the south line of the aforementioned Gary Davia 41.11 acres tract, North 87°52'20" East a distance of 355.00 feet to the Point of Beginning;

DESCRIPTION APPROVED
FOR AUDITORS TRANSFER

BY

[Signature]
8-7-95

Page 2 of 2
Description of Parcel No. 2

containing 10.00± acres, more or less, out of Parcel No. 40-40-50-21-14.000.

Subject to all legal right-of-ways, easements, restrictions, reservations, and zoning regulations of record.

Subject to the right-of-way of Township Road No. 219.

Subject to the 100 year Flood Plain restrictions, if applicable.

Subject to a 50.00 feet wide easement being reserved unto the grantor, his heirs, and/or assigns, forever. Said easement is for the purposes of running utilities to other parcels of land on or near Township Road No. 219. Said easement runs in an east-west direction across the south end of the above described property with the south line of said easement being the centerline of Township Road No. 219. Containing 0.336 acres, more or less, of easement.

Subject to any facts that may be disclosed in a full and accurate title search.

All iron pins set are 1/2" x 30" rebar capped and labeled "Claus 6456".

The bearings in this description are for angle calculations only and are based on the east line of Section 21 used as an assumed bearing of South 03°13'54" East.

The above description prepared by Roger W. Claus, Registered Surveyor No. 6456, based on a new survey of August 2, 1995.

Prior Deed: Deed Volume _____, Page _____.

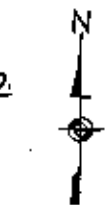
**OFFICE COPY
NOT RECORDABLE**

DESCRIPTION APPROVED
FOR AUDITORS TRANSFER
BY *[Signature]*
8-7-95

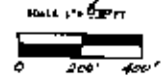
SURVEY PLAT

FOR BRUNER LAND CO.

Situation in the State of Ohio, County of
Hocking, Township of Wesley,
Range of 12, Meridian of East.
Section 21, 22, 27, 28, 29, 30, 31, 32, 33, 34, 35, 36, 37, 38, 39, 40, 41, 42, 43, 44, 45, 46, 47, 48, 49, 50, 51, 52, 53, 54, 55, 56, 57, 58, 59, 60, 61, 62, 63, 64, 65, 66, 67, 68, 69, 70, 71, 72, 73, 74, 75, 76, 77, 78, 79, 80, 81, 82, 83, 84, 85, 86, 87, 88, 89, 90, 91, 92, 93, 94, 95, 96, 97, 98, 99, 100.



The boundaries on this plat are for
audit only and are based
on the original survey
of 1852 by Wm. Bruner
and are not to be
taken as evidence of title.



Required as all rights, easements, claims, mortgages, liens, encumbrances, and other restrictions of record, subject to 100 year time bar restrictions, if applicable, subject to any laws that may be enacted in a full and complete title search.

- 1. 1/8" Iron pin set approx. "Clear 1000"
- 2. 1/4" Iron pin set approx. "Clear 1000"
- 3. Iron pin set approx. "Clear 1000"
- 4. Iron pin set approx. "Clear 1000"
- 5. Iron pin set approx. "Clear 1000"
- 6. Iron pin set approx. "Clear 1000"
- 7. Iron pin set approx. "Clear 1000"
- 8. Iron pin set approx. "Clear 1000"
- 9. Iron pin set approx. "Clear 1000"
- 10. Iron pin set approx. "Clear 1000"
- 11. Iron pin set approx. "Clear 1000"
- 12. Iron pin set approx. "Clear 1000"
- 13. Iron pin set approx. "Clear 1000"
- 14. Iron pin set approx. "Clear 1000"
- 15. Iron pin set approx. "Clear 1000"
- 16. Iron pin set approx. "Clear 1000"
- 17. Iron pin set approx. "Clear 1000"
- 18. Iron pin set approx. "Clear 1000"
- 19. Iron pin set approx. "Clear 1000"
- 20. Iron pin set approx. "Clear 1000"
- 21. Iron pin set approx. "Clear 1000"
- 22. Iron pin set approx. "Clear 1000"
- 23. Iron pin set approx. "Clear 1000"
- 24. Iron pin set approx. "Clear 1000"
- 25. Iron pin set approx. "Clear 1000"
- 26. Iron pin set approx. "Clear 1000"
- 27. Iron pin set approx. "Clear 1000"
- 28. Iron pin set approx. "Clear 1000"
- 29. Iron pin set approx. "Clear 1000"
- 30. Iron pin set approx. "Clear 1000"
- 31. Iron pin set approx. "Clear 1000"
- 32. Iron pin set approx. "Clear 1000"
- 33. Iron pin set approx. "Clear 1000"
- 34. Iron pin set approx. "Clear 1000"
- 35. Iron pin set approx. "Clear 1000"
- 36. Iron pin set approx. "Clear 1000"
- 37. Iron pin set approx. "Clear 1000"
- 38. Iron pin set approx. "Clear 1000"
- 39. Iron pin set approx. "Clear 1000"
- 40. Iron pin set approx. "Clear 1000"
- 41. Iron pin set approx. "Clear 1000"
- 42. Iron pin set approx. "Clear 1000"
- 43. Iron pin set approx. "Clear 1000"
- 44. Iron pin set approx. "Clear 1000"
- 45. Iron pin set approx. "Clear 1000"
- 46. Iron pin set approx. "Clear 1000"
- 47. Iron pin set approx. "Clear 1000"
- 48. Iron pin set approx. "Clear 1000"
- 49. Iron pin set approx. "Clear 1000"
- 50. Iron pin set approx. "Clear 1000"
- 51. Iron pin set approx. "Clear 1000"
- 52. Iron pin set approx. "Clear 1000"
- 53. Iron pin set approx. "Clear 1000"
- 54. Iron pin set approx. "Clear 1000"
- 55. Iron pin set approx. "Clear 1000"
- 56. Iron pin set approx. "Clear 1000"
- 57. Iron pin set approx. "Clear 1000"
- 58. Iron pin set approx. "Clear 1000"
- 59. Iron pin set approx. "Clear 1000"
- 60. Iron pin set approx. "Clear 1000"
- 61. Iron pin set approx. "Clear 1000"
- 62. Iron pin set approx. "Clear 1000"
- 63. Iron pin set approx. "Clear 1000"
- 64. Iron pin set approx. "Clear 1000"
- 65. Iron pin set approx. "Clear 1000"
- 66. Iron pin set approx. "Clear 1000"
- 67. Iron pin set approx. "Clear 1000"
- 68. Iron pin set approx. "Clear 1000"
- 69. Iron pin set approx. "Clear 1000"
- 70. Iron pin set approx. "Clear 1000"
- 71. Iron pin set approx. "Clear 1000"
- 72. Iron pin set approx. "Clear 1000"
- 73. Iron pin set approx. "Clear 1000"
- 74. Iron pin set approx. "Clear 1000"
- 75. Iron pin set approx. "Clear 1000"
- 76. Iron pin set approx. "Clear 1000"
- 77. Iron pin set approx. "Clear 1000"
- 78. Iron pin set approx. "Clear 1000"
- 79. Iron pin set approx. "Clear 1000"
- 80. Iron pin set approx. "Clear 1000"
- 81. Iron pin set approx. "Clear 1000"
- 82. Iron pin set approx. "Clear 1000"
- 83. Iron pin set approx. "Clear 1000"
- 84. Iron pin set approx. "Clear 1000"
- 85. Iron pin set approx. "Clear 1000"
- 86. Iron pin set approx. "Clear 1000"
- 87. Iron pin set approx. "Clear 1000"
- 88. Iron pin set approx. "Clear 1000"
- 89. Iron pin set approx. "Clear 1000"
- 90. Iron pin set approx. "Clear 1000"
- 91. Iron pin set approx. "Clear 1000"
- 92. Iron pin set approx. "Clear 1000"
- 93. Iron pin set approx. "Clear 1000"
- 94. Iron pin set approx. "Clear 1000"
- 95. Iron pin set approx. "Clear 1000"
- 96. Iron pin set approx. "Clear 1000"
- 97. Iron pin set approx. "Clear 1000"
- 98. Iron pin set approx. "Clear 1000"
- 99. Iron pin set approx. "Clear 1000"
- 100. Iron pin set approx. "Clear 1000"

**ONE COPY
NOT RECORDABLE**



LINE	BEARING	DIST.
A	S 86° 12' 15" W	372.01
B	S 89° 55' 00" W	482.25
C	S 89° 55' 00" W	482.25
D	N 86° 12' 15" W	372.01
E	N 89° 55' 00" W	482.25
F	N 89° 55' 00" W	482.25
G	S 86° 12' 15" W	372.01
H	S 89° 55' 00" W	482.25
I	S 89° 55' 00" W	482.25
J	S 86° 12' 15" W	372.01
K	S 89° 55' 00" W	482.25
L	S 89° 55' 00" W	482.25
M	N 86° 12' 15" W	372.01
N	N 89° 55' 00" W	482.25
O	N 89° 55' 00" W	482.25
P	N 86° 12' 15" W	372.01
Q	N 89° 55' 00" W	482.25
R	N 89° 55' 00" W	482.25
S	N 86° 12' 15" W	372.01
T	N 89° 55' 00" W	482.25
U	N 89° 55' 00" W	482.25
V	N 86° 12' 15" W	372.01
W	N 89° 55' 00" W	482.25
X	N 89° 55' 00" W	482.25
Y	N 86° 12' 15" W	372.01
Z	N 89° 55' 00" W	482.25
AA	N 89° 55' 00" W	482.25
AB	N 86° 12' 15" W	372.01
AC	N 89° 55' 00" W	482.25
AD	N 89° 55' 00" W	482.25
AE	N 86° 12' 15" W	372.01
AF	N 89° 55' 00" W	482.25
AG	N 89° 55' 00" W	482.25
AH	N 86° 12' 15" W	372.01

