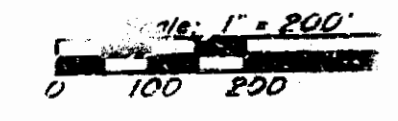
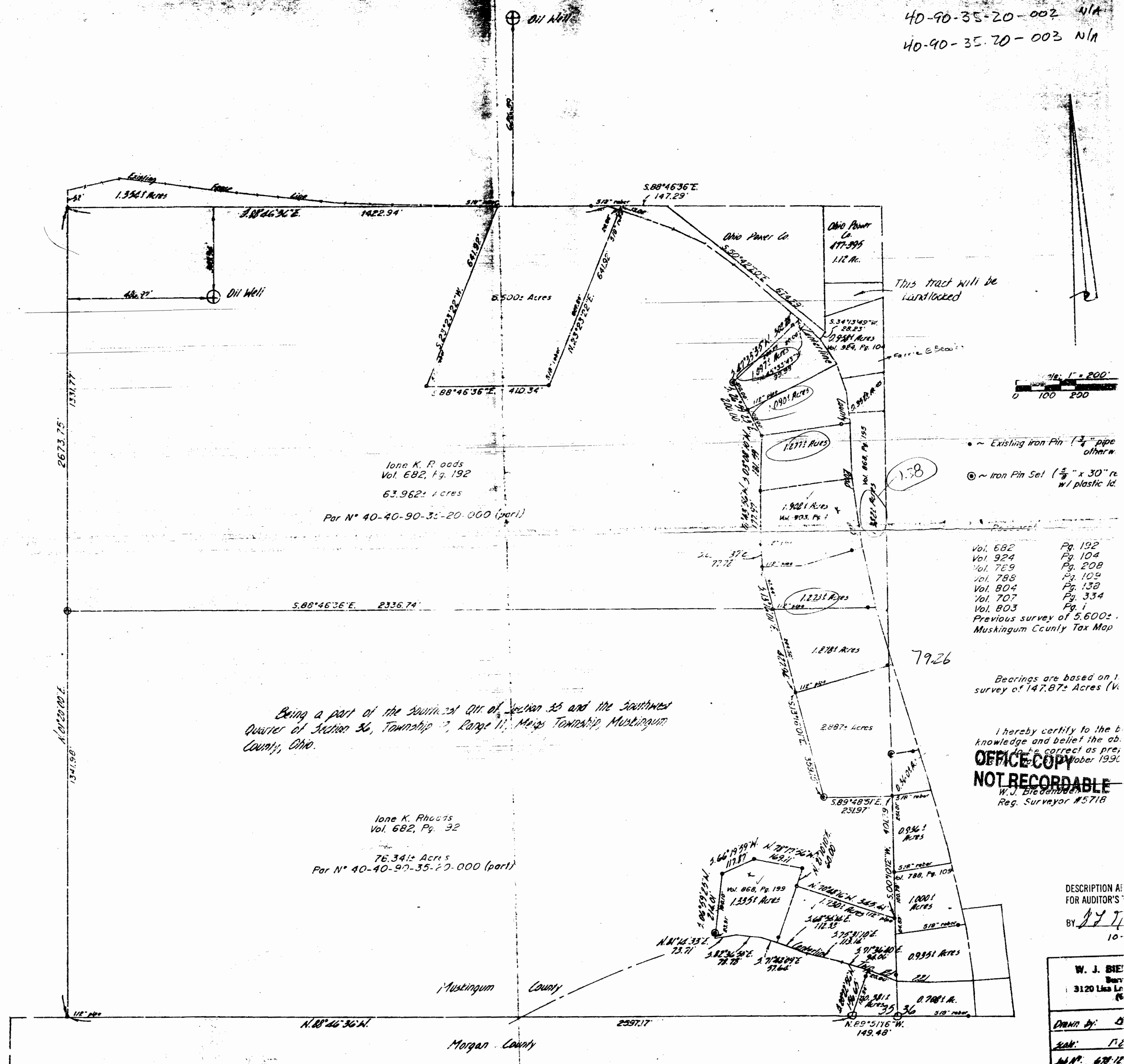


40-90-35-20-002 N/A
 40-90-35-20-003 N/A



~ Existing iron Pin (1/4\" pipe otherw
 @ ~ Iron Pin Set (5/8\" x 30\" re w/ plastic lid

Vol. 682 Pg. 192
 Vol. 924 Pg. 104
 Vol. 769 Pg. 208
 Vol. 788 Pg. 109
 Vol. 804 Pg. 138
 Vol. 707 Pg. 334
 Vol. 803 Pg. 1
 Previous survey of 5,600±
 Muskingum County Tax Map

Bearings are based on 1
 survey of 147.87± Acres (V

I hereby certify to the b
 knowledge and belief the ab
 to be correct as pre
 October 1990
OFFICE COPY
NOT RECORDABLE
 W. J. BIE
 Reg. Surveyor #5718

Being a part of the southwest 1/4 of Section 35 and the southwest
 Quarter of Section 36, Township 7, Range 11, Meigs Township, Muskingum
 County, Ohio.

Ione K. Rhoads
 Vol. 682, Pg. 32
 76.34± Acres
 Par N° 40-40-97-35-20-000 (part)

Ione K. Rhoads
 Vol. 682, Pg. 192
 63.962± Acres
 Par N° 40-40-90-35-20-000 (part)

DESCRIPTION AS
 FOR AUDITOR'S
 BY W. J. BIE
 10-

W. J. BIE
 Surveyor
 3120 Lima Rd.
 Lima, Ohio
 DRAWN BY: W. J. BIE
 SCALE: 1\"/>

Muskingum County
 Morgan County