

727 Cambridge Road  
Coshocton, Ohio 43812

**LANDMARK SURVEYS**  
**EARL R. DONAKER, P.S.**

(614) 623-0993  
1-800-842-3264

J.J. DETWEILER ENTERPRISES, INC. 5.002 Acres

**TRACT 3**

Being 5.002 acres, more or less, in Lot 38, part of parcel 42-40-03-10, in the third quarter of township 3 north, range 5 west, United States Military Lands, in the township of Monroe, in the county of Muskingum, in the State of Ohio, and more particularly described as follows:

Commencing at a 5/8" steel pin found at the northeast corner of Lot 37;

thence, along the Lot line, N.88°08'49"W. 1999.82' to a point in the centerline of Bell Road, TR 169;

thence, along the centerline of Bell Road, TR 169, N.09°20'00"W. 61.29' to a point, said point being the TRUE POINT OF BEGINNING;

thence, along the centerline of Bell Road, TR 169, the following 2 courses:

1. thence, continuing N.09°20'00"W. 52.71' to a point;
2. thence, N.12°23'00"W. 149.65' to a point;

thence, through the property of J.J. Detweiler Enterprises, Inc., 1094-385, the following 5 courses:

1. thence, N.79°19'16"E. 20.00' to a 5/8" steel pin set;
2. thence, continuing N.79°19'16"E. 1062.36' to a 5/8" steel pin set;
3. thence, S.09°11'44"E. 202.35' to a 5/8" steel pin set;
4. thence, S.79°19'16"W. 1052.41' to a 5/8" steel pin set;
5. thence, continuing S.79°19'16"W. 21.50' to the TRUE POINT OF BEGINNING, containing 5.002 acres, more or less, including public road right-of-way and is subject to all easements, rights-of-way, or restrictions, whether recorded or implied.

Bearings are based on Deed Book 931, page 187, and are for angular calculations only. N.01°19'58"E. All 5/8" steel pins set are 30" long.

Pertinent documents: tax maps: 42-40, 42-70, 02-60; deeds: 438-599, 1024-45, 754-84, 605-149, 819-129, 514-524, 1063-341, 1041-185, 931-187, 892-169, 1071-76, 1073-618, 1094-385; surveys by: Jerry Lee Gamble, W.J. Biedenbach, Joseph T. Spilker, Earl R. Donaker.

Prior deed: 1094-385.

Description and plat by Landmark Surveys, Earl R. Donaker, Professional Surveyor, #7142, from a survey of the premises in the month of August, in the year of our Lord one thousand nine hundred and ninety-four.

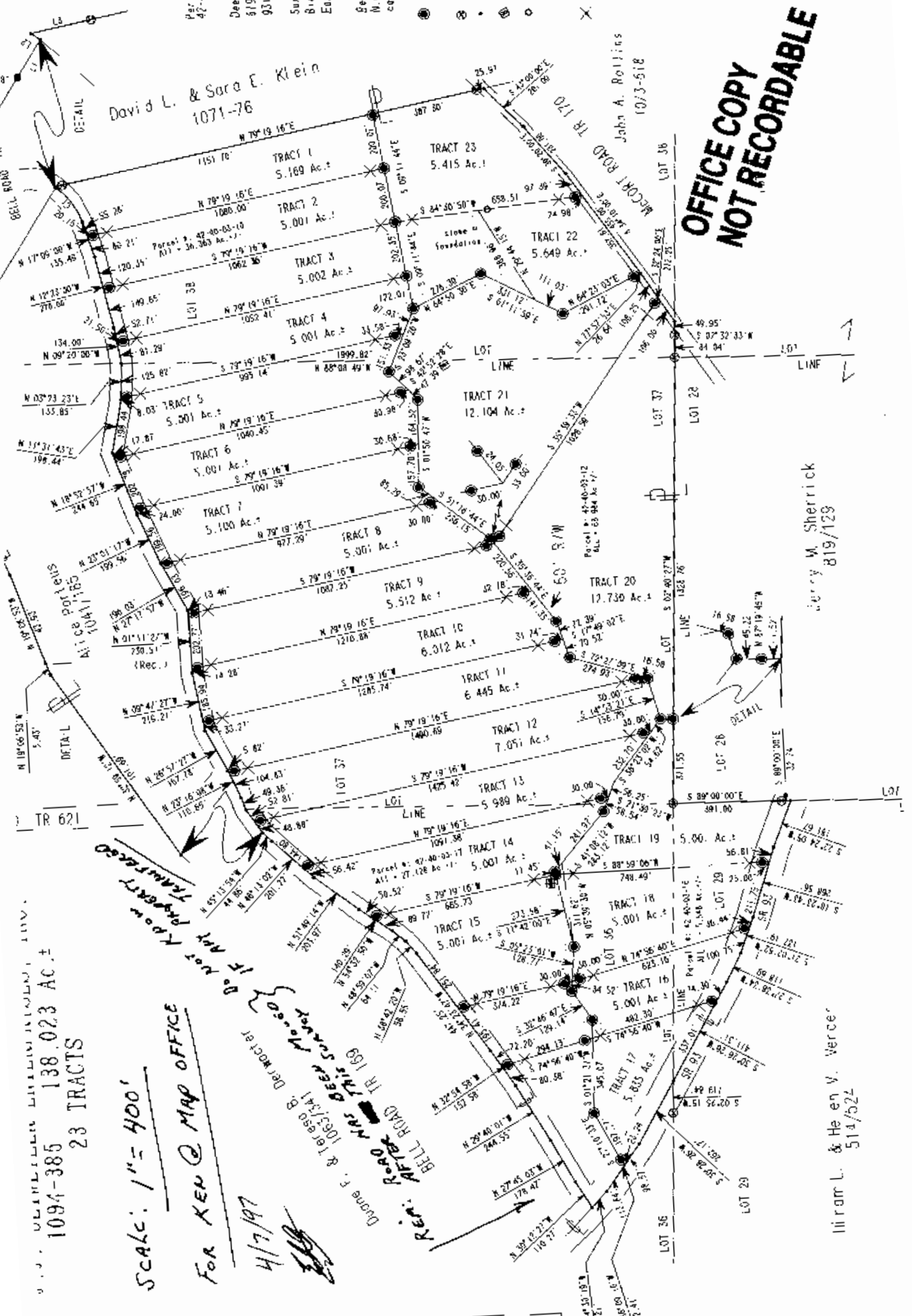
**OFFICE COPY  
NOT RECORDABLE**

DESCRIPTION APPROVED  
FOR AUDITORS TRANSFER

BY

*Ad L. D.*  
8-12-94

0.486
0.618
4.832
5.649
5.413
36.363
0.812
4.513
5.001
5.100
5.001
5.012
5.012
6.445
6.510
3.134
0.040
12.12
1.272
88.984
0.141
2.855
4.961
5.001
3.813
5.385
3.104
1.868
27.128
1.188
0.453
1.897
2.013
5.548
138.023
1 parcel



**OFFICE COPY  
NOT RECORDABLE**

SCALE: 1" = 400'

FOR KEN Q. MAP OFFICE

4/7/97

Ken Q. Map Office

Do not know property

1094-385 138.023 AC.±

23 TRACTS

Jerry M. Sherrick  
819/129

Hiram L. & Helen V. Verzer  
514/624

Notarized