

Land Surveyors of America, Inc.

413 1/2 MAIN STREET, COSHOCTON, OHIO 43812

(740) 622 - 8855

42-50-03-07-002

10925 FRIENDSHIP DR

SITUATED IN THE TOWNSHIP OF MONROE, COUNTY OF MUSKINGUM, AND STATE OF OHIO AND BEING A PART OF THE EAST HALF OF LOT 7 OF THE THIRD QUARTER OF TOWNSHIP 3 NORTH, RANGE 5 WEST, OF THE U.S.M.L., AND BEING PART OF THE LAND CONVEYED TO JOHN E. McCLAIN, JR. AND ROSEMARY McCLAIN, THROUGH A DEED RECORDED IN VOLUME 1043, PAGE 181 (TRACT 1), (BEING PART OF PARCEL NUMBER 42-42-50-03-07-001) FURTHER BOUNDED AND DESCRIBED AS FOLLOWS:

COMMENCING AT A FOUND STONE LOCATED IN THE NORTHWEST CORNER OF THE EAST HALF OF LOT 7.

THENCE, S 00°40'25" E, A DISTANCE OF 1536.64 FEET, WITH THE WEST LINE OF THE EAST HALF OF LOT 7, TO A 5/8 INCH REBAR, FOUND;

THENCE, S 89°25'11" E, A DISTANCE OF 528.13 FEET, WITH THE SOUTH LINE OF LOT 7, TO A POINT LOCATED ON THE CENTERLINE OF WHITE EYES CREEK, SAID POINT BEING THE TRUE PLACE OF BEGINNING OF THE LAND HEREIN DESCRIBED:

THENCE, THE NEXT 16 COURSES THROUGH THE LANDS OF JOHN E. McCLAIN, JR. AND ROSEMARY McCLAIN, RECORDED IN VOL. 1043, PG. 181 (TRACT 1), AND WITH THE MEANDERING OF THE WHITE EYES CREEK.

- 1) THENCE, N 42°27'00" E, A DISTANCE OF 95.68 FEET, TO A POINT;
- 2) THENCE, N 57°55'00" W, A DISTANCE OF 76.41 FEET TO A POINT;
- 3) THENCE, N 07°53'21" W, A DISTANCE OF 43.64 FEET TO A POINT;
- 4) THENCE, N 52°11'58" E, A DISTANCE OF 193.56 FEET TO A POINT;
- 5) THENCE, N 08°31'17" E, A DISTANCE OF 43.86 FEET TO A POINT;
- 6) THENCE, N 59°47'09" W, A DISTANCE OF 128.92 FEET TO A POINT;
- 7) THENCE, N 12°05'09" E, A DISTANCE OF 52.46 FEET TO A POINT;
- 8) THENCE, N 85°28'16" E, A DISTANCE OF 95.47 FEET TO A POINT;
- 9) THENCE, N 25°57'07" E, A DISTANCE OF 161.36 FEET TO A POINT;
- 10) THENCE, N 15°53'20" W, A DISTANCE OF 71.86 FEET TO A POINT;
- 11) THENCE, N 35°16'36" E, A DISTANCE OF 72.08 FEET TO A POINT;
- 12) THENCE, N 03°35'21" W, A DISTANCE OF 280.20 FEET TO A POINT;
- 13) THENCE, N 66°24'40" W, A DISTANCE OF 72.11 FEET TO A POINT;
- 14) THENCE, N 47°25'20" W, A DISTANCE OF 163.97 FEET TO A POINT;
- 15) THENCE, N 31°40'02" W, A DISTANCE OF 52.58 FEET TO A POINT;
- 16) THENCE, N 60°07'06" E, A DISTANCE OF 29.43 FEET TO A POINT;

THENCE, N 89°29'16" E, A DISTANCE OF 444.68 FEET, PASSING A 3/4 INCH X 30 INCHES IRON PIPE SET ON THE SIDE OF THE CREEK BANK AT 241.63 FEET, WITH THE SOUTH LINE OF A TRACT CONVEYED TO KIMBERLEE S. WILSON, THROUGH A DEED RECORDED IN VOL. 1009, PG. 32 TO A POINT ON THE WEST RIGHT-OF-WAY LINE OF STATE ROUTE 83, SAID POINT BEING, S 89°29'16" W, A DISTANCE OF 39.66 FEET FROM A RAILROAD SPIKE IN THE CENTER OF STATE ROUTE 83, FOUND;

THENCE, S 18°08'34" W, A DISTANCE OF 294.35 FEET, WITH THE WEST RIGHT-OF-WAY LINE OF STATE ROUTE 83, TO A POINT, SAID POINT BEING, S 25°54'55" W, A DISTANCE OF 66.47 FEET FROM A 5/8 INCH REBAR, FOUND;

THENCE, WITH A CURVE TO THE LEFT HAVING A RADIUS OF 570.37 FEET, A CHORD BEARING S 05°42'15" W, A CHORD DISTANCE OF 245.71 FEET AND AN ARC DISTANCE OF 247.65 FEET, WITH THE WEST RIGHT-OF-WAY LINE OF STATE ROUTE 83, TO A POINT, SAID POINT BEING, N 46°59'15" W, A DISTANCE OF 18.89 FEET FROM A 5/8 INCH REBAR, FOUND;

THENCE, S 06°44'05" E, A DISTANCE OF 178.95 FEET, WITH THE WEST RIGHT-OF-WAY LINE OF STATE ROUTE 83, TO A POINT, SAID POINT BEING, S 76°14'52" W, A DISTANCE OF 122.63 FEET FROM A 1 INCH ROD, FOUND;

THENCE, S 05°01'01" E, A DISTANCE OF 500.34 FEET, WITH THE WEST RIGHT-OF-WAY LINE OF STATE ROUTE 83, TO A 5/8 INCH REBAR, FOUND;

THENCE, N 89°25'11" W, A DISTANCE OF 427.50 FEET, PASSING A 3/4 INCH X 30 INCHES IRON PIPE SET ON THE SIDE OF THE CREEK BANK AT 402.50 FEET, WITH THE SOUTH LINE OF LOT 7 TO THE TRUE POINT OF BEGINNING.

CONTAINING 7.186 ACRES, MORE OR LESS, AND IS SUBJECT TO ALL EASEMENTS, RIGHT-OF-WAYS, OR RESTRICTIONS, WHETHER RECORDED OR IMPLIED.

NORTH ARROW AND BEARINGS ARE BASED ON A SURVEY BY W. J. BIEDENBACH, R.S. #5718, DATED SEPTEMBER 26, 1990.

PERTINENT DOCUMENTS: TAX MAP, SURVEYS W. J. BIEDENBACH, R.S. #5718, DATED SEPTEMBER 26, 1990, JACK D. NEWCOME, P.S. #7321, DATED MAY 27, 1992, AND STANLEY MCFARLAND, R.S. #6221, DATED AUGUST 27. DEEDS: 1043/181, 1009/32, 1137/541, 1086/595, 723/233, 683/313, 1101/54.

SURVEY DESCRIPTION PREPARED BY LAND SURVEYORS OF AMERICA, INC.
THOMAS A. RAGER, PRESIDENT, P.S. #6649, APRIL 1999.

**OFFICE COPY
NOT RECORDABLE**

DESCRIPTION APPROVED
FOR AUDITOR'S TRANSFER
BY K. Buckley
5-7-99

Land Surveyors of America, Inc.

413 1/2 MAIN STREET, COSHOCTON, OHIO 43812

(740) 622 - 8855

SURVEY FOR JOHN AND TONY MCCLAIN:

SITUATED IN THE TOWNSHIP OF MONROE, COUNTY OF MUSKINGUM, AND STATE OF OHIO AND BEING A PART OF THE EAST HALF OF LOT 7 OF THE THIRD QUARTER OF TOWNSHIP 3 NORTH, RANGE 5 WEST, OF THE U.S.M.L., AND BEING PART OF THE LAND CONVEYED TO JOHN E. MCCLAIN, JR. AND ROSEMARY MCCLAIN, THROUGH A DEED RECORDED IN VOLUME 1043, PAGE 181 (TRACT 1). BEING PART OF PARCEL NUMBER 42-42-50-03-07-001

PERTINENT DOCUMENTS:

TAX MAP, SURVEYS W. J. BIEDENBACH, R.S. #5718, DATED SEPTEMBER 26, 1990, JACK D. NEWCOME, P.S. #7321, DATED MAY 27, 1992, AND STANLEY MCFARLAND, R.S. #6221, DATED AUGUST 27. DEEDS: 1043/181, 1009/32, 1137/541, 1086/595, 723/233, 683/313, 1101/54.

NORTH ARROW AND BEARINGS ARE BASED ON A SURVEY BY W.J. BIEDENBACH, R.S. #5718, DATED SEPTEMBER 26, 1990.

LEGEND:

- 5/8 INCH REBAR, FOUND
- 3/4 INCH X 30 INCHES IRON PIPE, SET
- ◆ STONE, FOUND
- ★ POINT
- ✕ RAILROAD SPIKE, FOUND

LOT 8

LOT 7

NORTHWEST CORNER OF THE EAST HALF OF LOT 7

DESCRIPTION APPROVED FOR AUDITOR'S TRANSFER BY K. Becky 5-7-99

KIMBERLEE S. WILSON 1009/32

HALF SECTION LINE
S 00°40'25" E
3536.64'

LINE	BEARING	DISTANCE
L1	N 42°27'00" E	95.68'
L2	N 57°55'00" W	76.41'
L3	N 07°53'21" W	43.64'
L4	N 52°11'58" E	193.56'
L5	N 08°31'17" E	43.86'
L6	N 59°47'09" W	128.92'
L7	N 12°05'09" E	52.46'
L8	N 85°28'16" E	95.47'
L9	N 25°57'07" E	161.36'
L10	N 15°53'20" W	71.86'
L11	N 35°16'36" E	72.08'
L12	N 03°35'21" W	280.20'
L13	N 66°24'40" W	72.11'
L14	N 47°25'20" W	163.97'
L15	N 31°40'02" W	52.58'
L16	N 60°07'06" E	29.43'

C1:
CH. BRG. S 05°42'15" W
CH. DIS. 245.71'
ARC DIS. 247.65'
RADIUS 570.37'

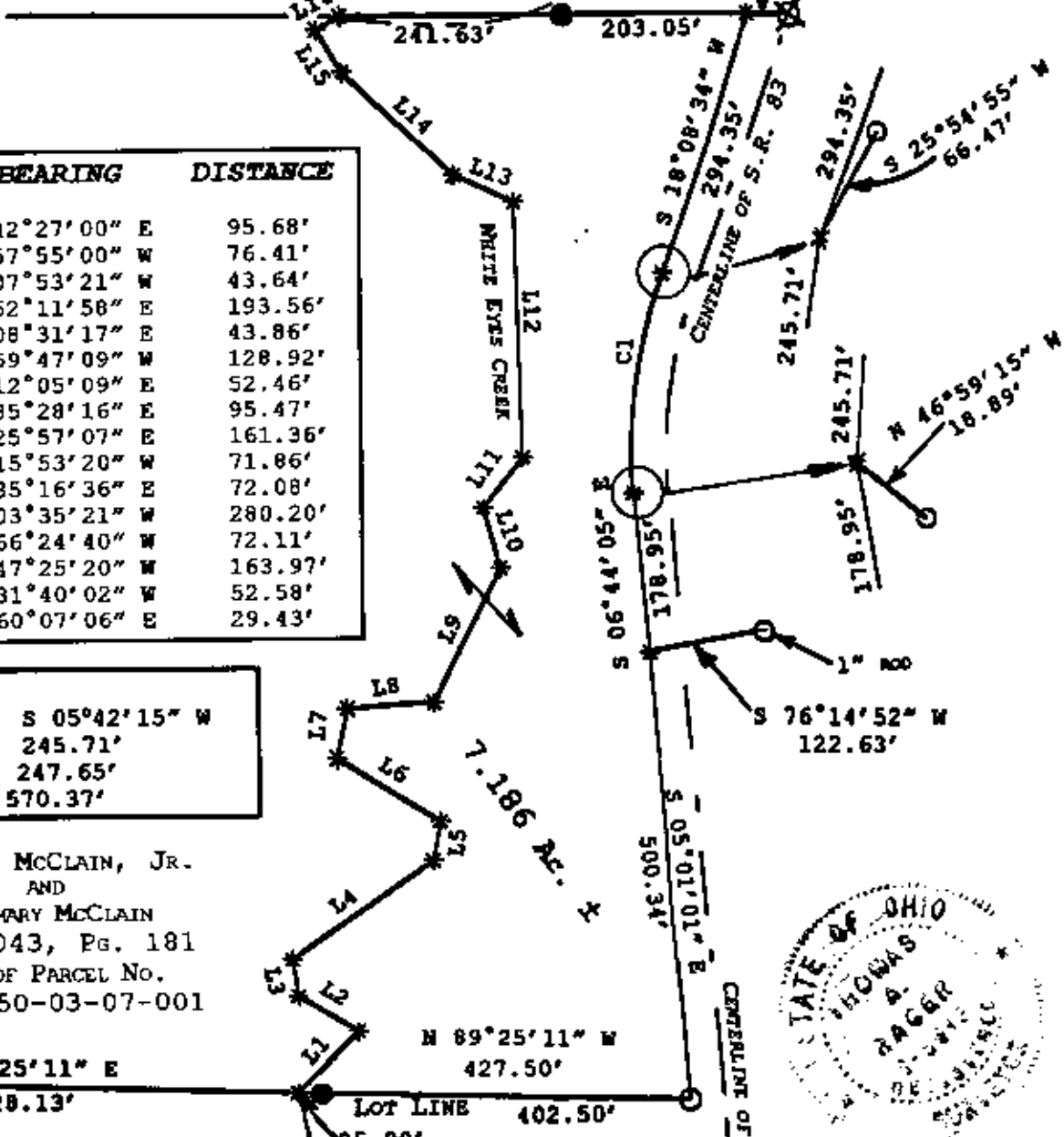
JOHN E. MCCLAIN, JR.
AND
ROSEMARY MCCLAIN
VOL. 1043, PG. 181
PART OF PARCEL NO.
42-42-50-03-07-001

S 89°25'11" E
528.13'

G. SENSABAUGH
1137/541

N 89°29'16" E
444.68'

S 89°29'16" W
39.66'



OFFICE COPY
NOT RECORDABLE