

ALAN DONAKER SURVEYING

Alan Donaker, P.S.

19849 TR 383

Walhonding, OH 43843

Phone: (740) 327-7001

Fax: (740) 327-6101

APPROVED

MUSKINGUM COUNTY

PLANNING COMMISSION DIRECTOR

Date

Fee Paid

Being 10.000 acres, more or less, in Lot 9, Third Quarter, Township 3 North, Range 5 West, United States Military Lands, in the Township of Monroe, in the County of Muskingum, in the State of Ohio, conveyed to Aaron and Martha Hostetler, OR 1522-822 (part), Parcel No. 42-50-03-19-001 (part) and more particularly described as follows:

Commencing at a stone found at the Southwest corner of Lot 9;

thence, with the South line of said Lot 9, the following 2 courses:

1. thence, N. 88° 11' 17" E. a distance of 1391.99' to a ¾" pipe found;
2. thence, N. 88° 11' 17" E. a distance of 24.70' to a point in the centerline of Castor Road (T. R. 171);

thence, with the centerline of Castor Road (T. R. 171), the following 4 courses:

1. thence, N. 34° 46' 25" W. a distance of 71.33' to a point;
2. thence, N. 24° 39' 13" W. a distance of 66.67' to a point;
3. thence, N. 18° 32' 50" W. a distance of 119.44' to a point;
4. thence, N. 12° 47' 32" W. a distance of 14.58' to a point, said point being the TRUE POINT OF BEGINNING;

thence, through the property of Aaron and Martha Hostetler, OR 1522-822, the following 5 courses:

1. thence, N. 86° 30' 33" W. a distance of 20.00' to a 5/8" rebar set;
2. thence, N. 86° 30' 33" W. a distance of 546.18' to a 5/8" rebar set;
3. thence, N. 03° 05' 18" E. a distance of 823.27' to a 5/8" rebar set;
4. thence, S. 86° 30' 33" E. a distance of 529.49' to a 5/8" rebar set;
5. thence, S. 86° 30' 33" E. a distance of 16.32' to a point in the centerline of Castor Road (T. R. 171);

thence, with the centerline of Castor Road (T. R. 171), the following 5 courses:

1. thence, S. 08° 52' 49" W. a distance of 194.27' to a point;
2. thence, S. 10° 27' 16" W. a distance of 137.27' to a point;
3. thence, S. 00° 42' 26" W. a distance of 87.07' to a point;
4. thence, S. 02° 37' 48" E. a distance of 337.12' to a point;
5. thence, S. 12° 47' 32" E. a distance of 74.40' to the TRUE POINT OF BEGINNING, containing 10.000 acres, more or less, including public road right-of-way and is subject to all easements, rights-of-way, or restrictions, whether recorded or implied.

Bearings are based on OR 1522-822 and are for angular calculations only.

All 5/8" rebars set are 30" long with plastic cap marked "AMD 8050".

Pertinent Documents: Tax Map and all Deeds shown.
Flood Plain panel #390425 0075 C, Zone X

Surveys by: Terry J. Finley, Thomas A. Rager

Description and plat by Alan Donaker, Professional Surveyor, #8050, from a survey of the premises on March 5, in the year of our Lord Two Thousand Nine.



OFFICE COPY
NOT RECORDABLE
Page 1 of 1

DESCRIPTION

APPROVED

By: *[Signature]*

This property is subject to all easements, rights-of-way or restrictions, whether recorded or implied.

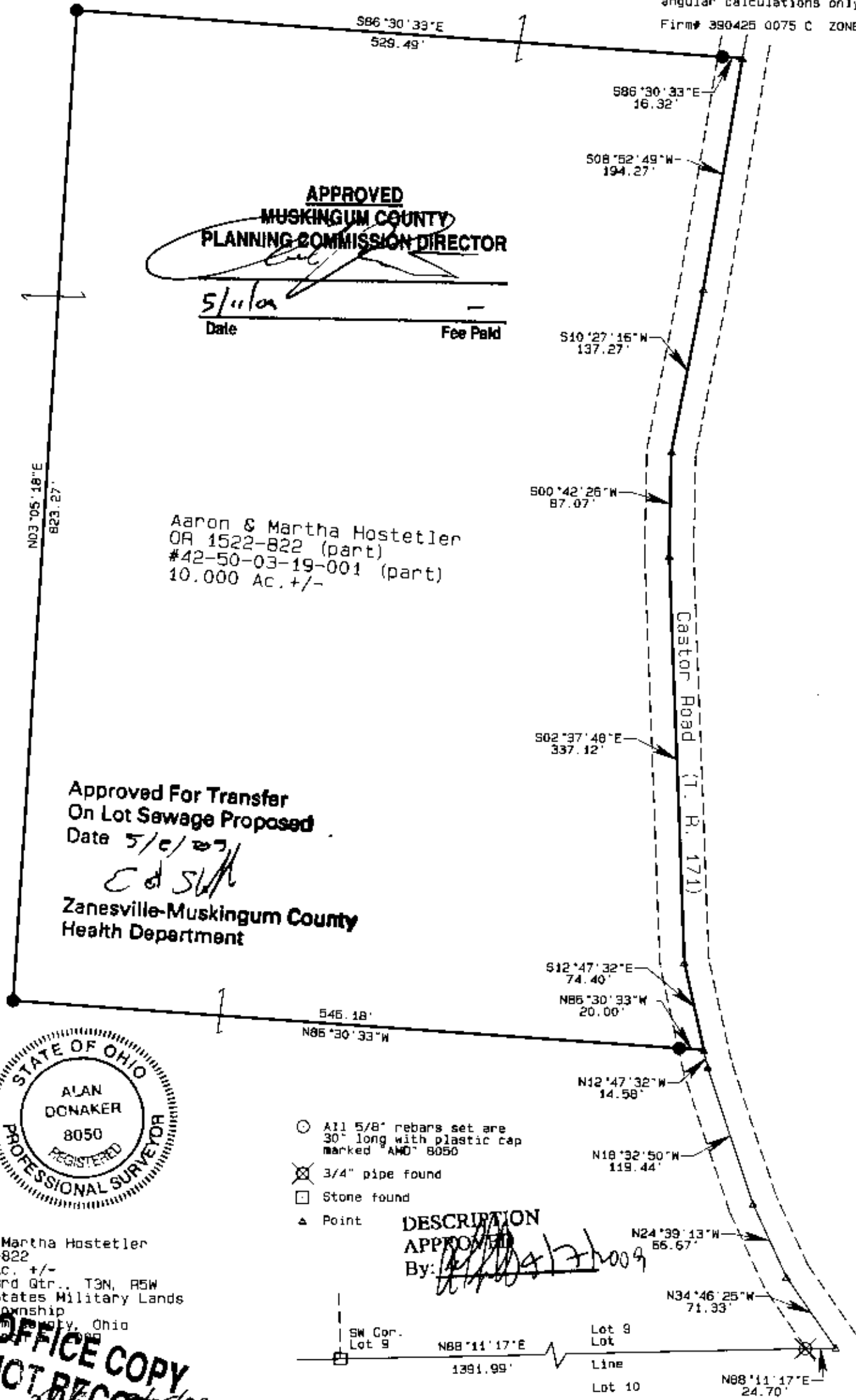
ALAN DONAKER SURVEYING
19849 TR 383
Walhonding, OH 43843
Telephone: (740) 327-7001
Fax: (740) 327-6101

Pertinent Documents: Tax Map
All Deeds Shown

Surveys by: Terry J. Finley,
Thomas A. Pagar

Bearings are based on
OR 1522-822 and are for
angular calculations only

Firm# 390425 0075 C ZONE X



APPROVED
MUSKINGUM COUNTY
PLANNING COMMISSION DIRECTOR

5/11/09
Date _____ Fee Paid _____

Aaron & Martha Hostetler
OR 1522-822 (part)
#42-50-03-19-001 (part)
10.000 Ac. +/-

Approved For Transfer
On Lot Sewage Proposed

Date *5/11/09*
E d S

Zanesville-Muskingum County
Health Department



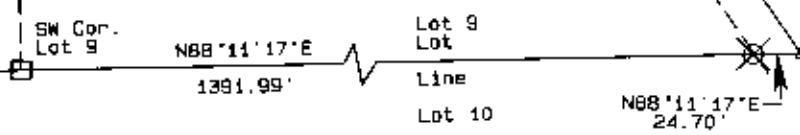
- All 5/8" rebar set are 30" long with plastic cap marked "AMD" 8050
- ⊗ 3/4" pipe found
- Stone found
- ▲ Point

DESCRIPTION APPROVED

By: *[Signature]*

Aaron & Martha Hostetler
OR 1522-822
10.000 Ac. +/-
Lot 9, 3rd Qtr., T3N, R5W
United States Military Lands
Monroe Township
Muskingum County, Ohio
Date: *5/11/09*

OFFICE COPY NOT RECORDABLE
I, Alan Donaker, P.S., do hereby certify this plat to represent a true and correct survey pursuant to Chapter 4733.33, Ohio Administrative Code and to be correct to the best of my knowledge and belief.



GRAPHIC SCALE

1"=100'

