

42-50-03-40-000

ALAN DONAKER SURVEYING

Alan Donaker, P.S.

19849 TR 383

Walhonding, OH 43843

Fax: (740) 327-1083

Phone: (740) 327-7001

T-2

Being 77.028 acres, more or less, in Lot 4, Third Quarter, Township 3 North, Range 5 West, United States Military Lands, in the Township of Monroe, in the County of Muskingum, in the State of Ohio, conveyed to Darl D. Stockum, DR 2453-922 (part) (TOD) (1/2 interest) and Stockum, LLC (part) (1/2 interest), DR 2440-888 (part), Parcel No. 42-50-03-40-000 (part) and more particularly described as follows:

Commencing at a stone found at the Southwest corner of Lot 4, said stone being the TRUE POINT OF BEGINNING;

thence, with the East line of Lot 13, N. 05° 13' 12" E. a distance of 1716.41' to a 5/8" rebar found;

thence, with the South line of Lot 5, S. 84° 56' 23" E. a distance of 1813.65' to a 5/8" rebar set;

thence, through the property of Darl D. Stockum, DR 2453-922 and Stockum, LLC, DR 2440-888, the following 3 courses:

1. thence, S. 07° 05' 48" W. a distance of 668.67' to a 5/8" rebar set;
2. thence, S. 26° 36' 05" E. a distance of 819.97' to a 5/8" rebar set;
3. thence, S. 26° 36' 05" E. a distance of 51.76' to a to a point in State Road 83;

thence, with the property line of Judith and James D. French, DR 2423-437 and in State Road 83, the following 2 courses:

1. thence, S. 43° 19' 17" W. a distance of 79.76' to a point;
2. thence, S. 42° 52' 43" W. a distance of 305.61' to a point;

thence, with the North line of Lot 3, the following 2 courses:

1. thence, N. 85° 00' 00" W. a distance of 70.63' to a 5/8" rebar set;
2. thence, N. 85° 00' 00" W. a distance of 1944.84' to the TRUE POINT OF BEGINNING, containing 77.028 acres, more or less, including public road right-of-way and is subject to all easements, rights-of-way, or restrictions, whether recorded or implied.

Bearings are based on DR 1101-389 and are for angular calculations only.

All 5/8" rebars set are 30" long with plastic cap marked "AMD 8050".

Pertinent Documents: Tax Map and all Deeds shown.

Flood Plain panel #390425 0075 C, Zones A and X

Surveys by: Alan Donaker, John R. Marshall

Description and plat by Alan Donaker, Professional Surveyor, #8050, from a survey of the premises on May 10, in the year of our Lord Two Thousand Sixteen.

**OFFICE COPY
NOT RECORDABLE**

Page 1 of 1

DESCRIPTION

APPROVED

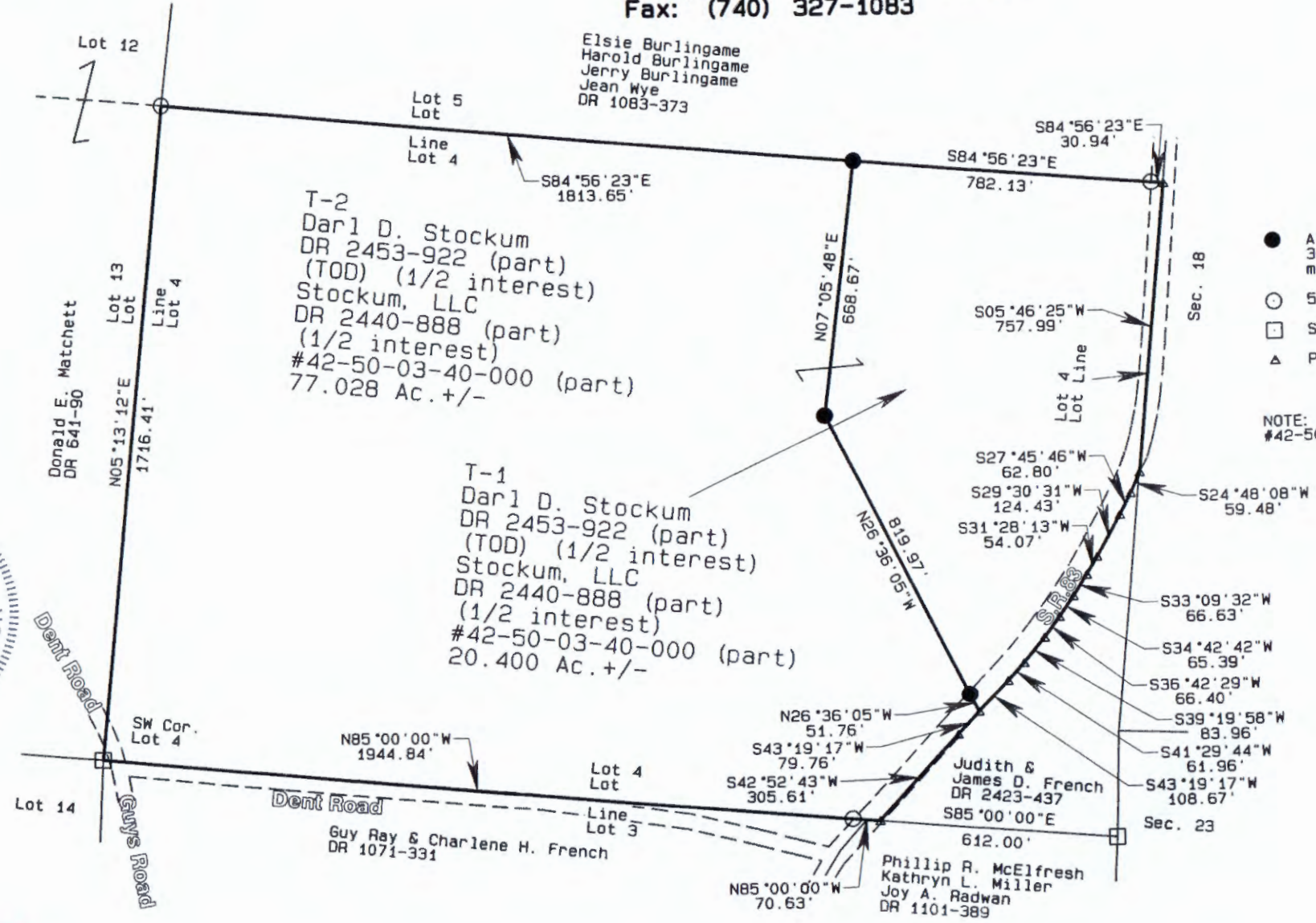
By: *Alan Donaker* 5/18/2016



This property is subject to all easements, rights-of-way or restrictions, whether recorded or implied.

ALAN DONAKER SURVEYING
19849 TR 383
Walhonding, OH 43843
Telephone: (740) 327-7001
Fax: (740) 327-1083

Pertinent Documents: Tax Map
All Deeds and Plats as shown
Surveys by: Alan Donaker,
John R. Marshall
Bearings are based on
DR 1101-389 and are for
angular calculations only
FIRM #390425 0075C ZONES A & X



- All 5/8" rebars set are 30" long with plastic cap marked "AMD" 8050
- 5/8" rebar found
- Stone found
- ▲ Point

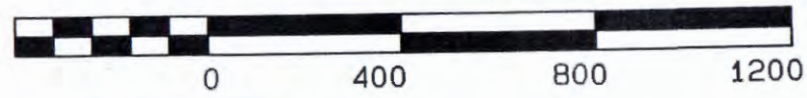
NOTE: T-1 & T-2 are all of #42-50-03-40-000

DESCRIPTION APPROVED BY: *[Signature]* 5/18/2016



OFFICE COPY NOT RECORDABLE
I, Alan Donaker, P.S. 8050, hereby certify this plat to represent a boundary survey pursuant to Chapter 4733.37 Ohio Administrative Code and to be correct to the best of my knowledge and belief.

GRAPHIC SCALE 1"=400'



Darl D. Stockum
DR 2453-922
Stockum, LLC
DR 2440-888
20.400 Ac. +/- &
77.028 Ac. +/-
Lot 4, Third Qtr.
T3N, R5W
United States Military Lands
Monroe Township
Muskingum County, Ohio
Date: May 10, 2016

ALAN DONAKER SURVEYING

Alan Donaker, P.S.

19849 TR 383

Walhonding, OH 43843

Phone: (740) 327-7001

Fax: (740) 327-1083

Being 97.428 acres, more or less, in Lot 4, Third Quarter, Township 3 North, Range 5 West, United States Military Lands, in the Township of Monroe, in the County of Muskingum, in the State of Ohio, conveyed to Darl D. Stockum and Donna E. Baker, DR 1814-718 (all), Parcel No. 42-50-03-40-000 (all) and more particularly described as follows:

Commencing at a stone found at the Southwest corner of Lot 4, said stone being the TRUE POINT OF BEGINNING;

thence, with the East line of Lot 13, N. 05° 13' 12" E. a distance of 1716.41' to a 5/8" rebar set;

thence, with the South line of Lot 5, the following 2 courses:

1. thence, S. 84° 56' 23" E. a distance of 2595.79' to a 5/8" rebar set;
2. thence, S. 84° 56' 23" E. a distance of 30.94' to a point in State Road 83 and on the West line of Section 18;

thence, with the West line of Section 18 and in State Road 83, S. 05° 46' 25" W. a distance of 757.99' to a point;

thence, with the property line of Judith French, DR 746-91 and in State Road 83, the following 11 courses:

1. thence, S. 24° 48' 08" W. a distance of 59.48' to a point;
2. thence, S. 27° 45' 46" W. a distance of 62.80' to a point;
3. thence, S. 29° 30' 31" W. a distance of 124.43' to a point;
4. thence, S. 31° 28' 13" W. a distance of 54.07' to a point;
5. thence, S. 33° 09' 32" W. a distance of 66.63' to a point;
6. thence, S. 34° 42' 42" W. a distance of 65.39' to a point;
7. thence, S. 36° 42' 29" W. a distance of 66.40' to a point;
8. thence, S. 39° 19' 58" W. a distance of 83.96' to a point;
9. thence, S. 41° 29' 44" W. a distance of 61.96' to a point;
10. thence, S. 43° 19' 17" W. a distance of 188.43' to a point;
11. thence, S. 42° 52' 43" W. a distance of 305.61' to a point;

thence, with the North line of Lot 3 the following 2 courses:

1. thence, N. 85° 00' 00" W. a distance of 70.63' to a 5/8" rebar set;
2. thence, N. 85° 00' 00" W. a distance of 1944.84' to the TRUE POINT OF BEGINNING, containing 97.428 acres, more or less, including public road right-of-way and is subject to all easements, rights-of-way, or restrictions, whether recorded or implied.

Bearings are based on DR 1101-389 and are for angular calculations only.

All 5/8" rebars set are 30" long with plastic cap marked "AMD 8050".

Pertinent Documents: Tax Map and all Deeds shown.

Flood Plain panel #390425 0075 C, Zones A and X

Surveys by: John R. Marshall

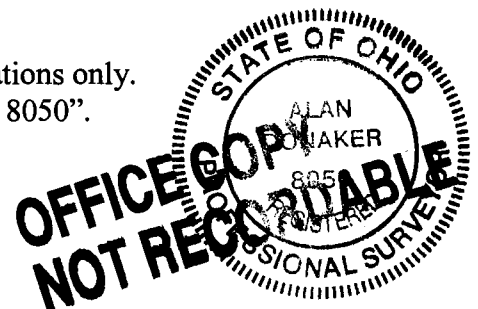
Description and plat by Alan Donaker, Professional Surveyor, #8050, from a survey of the premises on March 19, in the year of our Lord Two Thousand Twelve.

Alan Donaker 3/19/12

DESCRIPTION

APPROVED

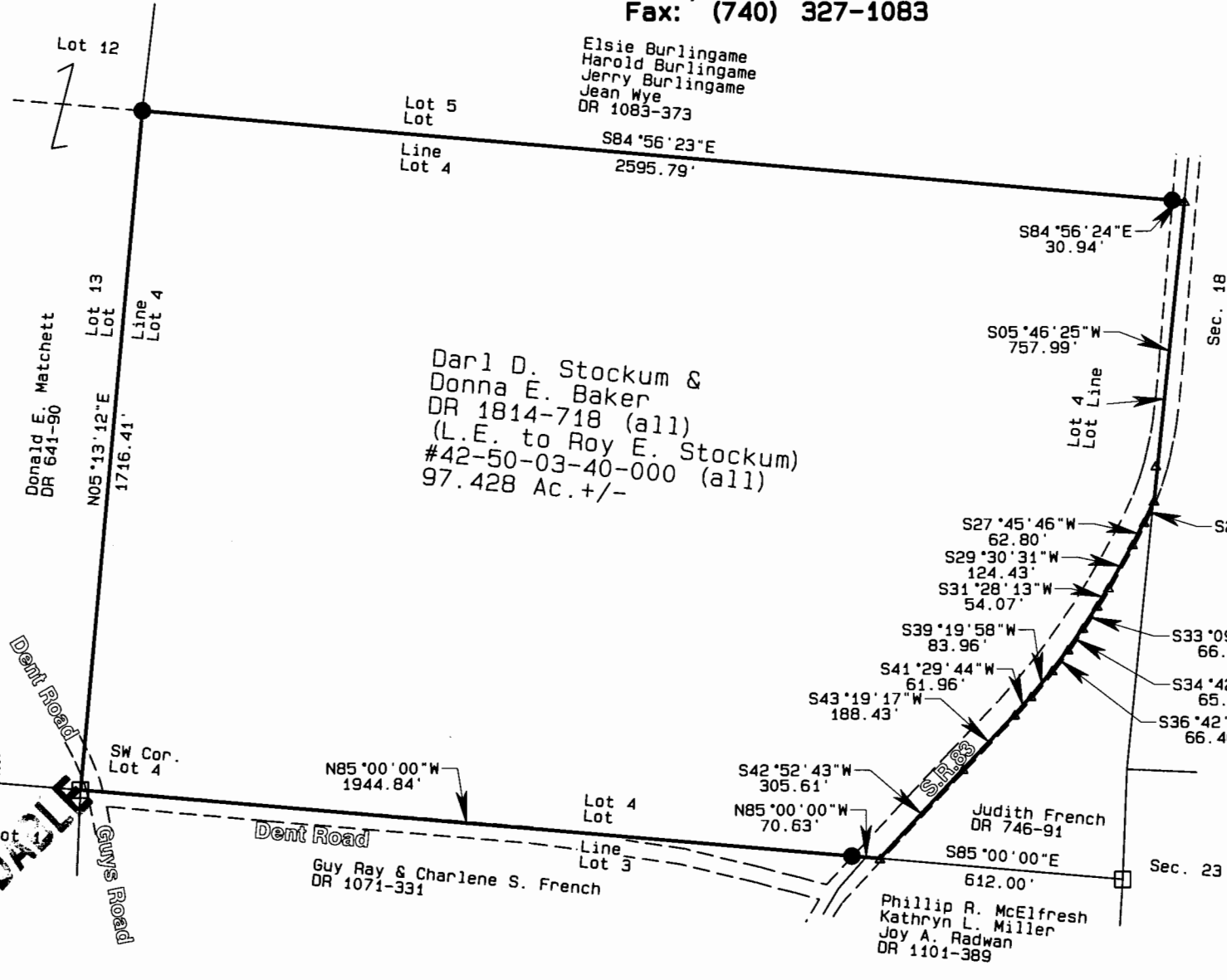
By: *[Signature]* 4/10/12



This property is subject to all easements, rights-of-way or restrictions, whether recorded or implied.

ALAN DONAKER SURVEYING
 19849 TR 383
 Walhonding, OH 43843
 Telephone: (740) 327-7001
 Fax: (740) 327-1083

Pertinent Documents: Tax Map
 All Deeds and Plats as shown
 Surveys by: John R. Marshall
 Bearings are based on
 DR 1101-389 and are for
 angular calculations only

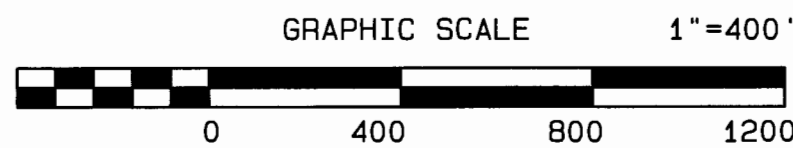


- All 5/8" rebar set are 30" long with plastic cap marked "AMD" 8050
- Stone found
- △ Point



OFFICE COPY
NOT RECORDABLE

I, Alan Donaker, P.S. 8050, hereby certify this plat to represent a boundary survey pursuant to Chapter 4733.37 Ohio Administrative Code and to be correct to the best of my knowledge and belief.



DESCRIPTION APPROVED
 By: *[Signature]*

Darl D. Stockum &
 Donna E. Baker
 DR 1814-718
 97.428 Ac. +/-
 Lot 4, Third Qtr.
 T3N, R5W
 United States Military Lands
 Monroe Township
 Muskingum County, Ohio
 Date: March 19, 2012