

# TERRY J. FINLEY SURVEYING & MAPPING

155 Mockingbird Hill, Zanesville, OH 43701

Phone or Fax: (614) 454-8721

Ohio Registered Surveyor #S-7222

## LEGAL DESCRIPTION FOR MARY PRINCE

SITUATED IN THE STATE OF OHIO, COUNTY OF MUSKINGUM, TOWNSHIP OF MONROE, AND BEING PART OF THE NORTHEAST AND NORTHWEST QUARTERS OF SECTION 14, AND THE SECOND QUARTER OF TOWNSHIP 3, RANGE 5, AND ALSO BEING PART OF LOTS #9 AND #24 IN THE THIRD QUARTER OF TOWNSHIP 3, RANGE 5, AND BEING PART OF THOSE LANDS INTENDED TO BE DESCRIBED IN TRACT #3 OF DEED VOLUME 1038, PAGE 516; BEING FURTHER BOUNDED AND DESCRIBED AS FOLLOWS:

BEGINNING AT A STONE FOUND AT THE SOUTHEAST CORNER OF SAID LOT #24, SAID POINT ALSO BEING THE SOUTHWEST CORNER OF LOT #9, THENCE, SOUTH 88 DEGREES - 11 MINUTES - 17 SECONDS WEST, 236.52 FEET TO A TWELVE (12) INCH CHERRY TREE; THENCE, NORTH 00 DEGREES - 37 MINUTES - 34 SECONDS WEST, 1914.08 FEET TO AN IRON PIN SET ON THE SOUTH LINE OF SECTION 14; THENCE, SOUTH 89 DEGREES - 22 MINUTES - 26 SECONDS WEST, 162.13 FEET TO AN IRON PIN SET; THENCE, NORTH 07 DEGREES - 56 MINUTES - 29 SECONDS EAST, 378.53 FEET TO AN IRON PIN FOUND; THENCE, NORTH 79 DEGREES - 34 MINUTES - 56 SECONDS EAST, 285.36 FEET TO AN IRON PIN FOUND; THENCE, NORTH 29 DEGREES - 29 MINUTES - 06 SECONDS EAST, 482.90 FEET TO A POINT IN THE CENTER OF TOWNSHIP ROAD #171, PASSING AN IRON PIN FOUND AT 467.90 FEET; THENCE, ALONG SAID ROAD, THE FOLLOWING THIRTY-NINE (39) COURSES AND DISTANCES:

- 1) SOUTH 59 DEGREES - 23 MINUTES - 41 SECONDS EAST, 136.43 FEET TO A POINT;
- 2) SOUTH 59 DEGREES - 46 MINUTES - 20 SECONDS EAST, 114.30 FEET TO A POINT;
- 3) SOUTH 64 DEGREES - 51 MINUTES - 04 SECONDS EAST, 149.18 FEET TO A POINT;
- 4) SOUTH 63 DEGREES - 46 MINUTES - 53 SECONDS EAST, 105.78 FEET TO A POINT;
- 5) SOUTH 59 DEGREES - 53 MINUTES - 47 SECONDS EAST, 116.12 FEET TO A POINT;
- 6) SOUTH 56 DEGREES - 08 MINUTES - 08 SECONDS EAST, 222.20 FEET TO A POINT;
- 7) SOUTH 50 DEGREES - 02 MINUTES - 31 SECONDS EAST, 44.00 FEET TO A POINT;
- 8) SOUTH 42 DEGREES - 33 MINUTES - 00 SECONDS EAST, 52.74 FEET TO A POINT;
- 9) SOUTH 36 DEGREES - 24 MINUTES - 17 SECONDS EAST, 168.46 FEET TO A POINT;
- 10) SOUTH 37 DEGREES - 08 MINUTES - 19 SECONDS EAST, 57.18 FEET TO A POINT;
- 11) SOUTH 37 DEGREES - 49 MINUTES - 35 SECONDS EAST, 186.54 FEET TO A POINT;
- 12) SOUTH 36 DEGREES - 27 MINUTES - 00 SECONDS EAST, 93.71 FEET TO A POINT;
- 13) SOUTH 27 DEGREES - 21 MINUTES - 30 SECONDS EAST, 46.33 FEET TO A POINT;
- 14) SOUTH 32 DEGREES - 03 MINUTES - 28 SECONDS EAST, 102.68 FEET TO A POINT;
- 15) SOUTH 40 DEGREES - 01 MINUTES - 10 SECONDS EAST, 102.36 FEET TO AN IRON PIN FOUND;
- 16) SOUTH 18 DEGREES - 09 MINUTES - 49 SECONDS EAST, 67.07 FEET TO A POINT;
- 17) SOUTH 22 DEGREES - 48 MINUTES - 29 SECONDS EAST, 37.08 FEET TO AN IRON PIN FOUND;
- 18) SOUTH 09 DEGREES - 42 MINUTES - 36 SECONDS WEST, 41.64 FEET TO A POINT;
- 19) SOUTH 05 DEGREES - 42 MINUTES - 13 SECONDS WEST, 77.14 FEET TO A POINT;
- 20) SOUTH 10 DEGREES - 36 MINUTES - 37 SECONDS WEST, 77.22 FEET TO A POINT;
- 21) SOUTH 11 DEGREES - 23 MINUTES - 12 SECONDS WEST, 77.34 FEET TO A POINT;

- 22) SOUTH 10 DEGREES - 41 MINUTES - 11 SECONDS WEST, 74.98 FEET TO A POINT;
- 23) SOUTH 08 DEGREES - 54 MINUTES - 56 SECONDS WEST, 64.31 FEET TO A POINT;
- 24) SOUTH 10 DEGREES - 05 MINUTES - 50 SECONDS WEST, 67.82 FEET TO A POINT;
- 25) SOUTH 10 DEGREES - 17 MINUTES - 00 SECONDS WEST, 73.04 FEET TO A POINT;
- 26) SOUTH 10 DEGREES - 54 MINUTES - 29 SECONDS WEST, 72.57 FEET TO A POINT;
- 27) SOUTH 13 DEGREES - 49 MINUTES - 58 SECONDS WEST, 78.89 FEET TO A POINT;
- 28) SOUTH 10 DEGREES - 38 MINUTES - 06 SECONDS WEST, 74.81 FEET TO A POINT;
- 29) SOUTH 05 DEGREES - 19 MINUTES - 02 SECONDS WEST, 74.86 FEET TO A POINT;
- 30) SOUTH 01 DEGREES - 10 MINUTES - 18 SECONDS EAST, 74.19 FEET TO A POINT;
- 31) SOUTH 01 DEGREES - 08 MINUTES - 36 SECONDS EAST, 72.01 FEET TO A POINT;
- 32) SOUTH 04 DEGREES - 05 MINUTES - 35 SECONDS WEST, 68.33 FEET TO A POINT;
- 33) SOUTH 01 DEGREES - 50 MINUTES - 58 SECONDS EAST, 71.45 FEET TO A POINT;
- 34) SOUTH 02 DEGREES - 59 MINUTES - 06 SECONDS EAST, 70.00 FEET TO A POINT;
- 35) SOUTH 11 DEGREES - 21 MINUTES - 12 SECONDS EAST, 70.62 FEET TO A POINT;
- 36) SOUTH 18 DEGREES - 25 MINUTES - 24 SECONDS EAST, 65.00 FEET TO A POINT;
- 37) SOUTH 20 DEGREES - 22 MINUTES - 09 SECONDS EAST, 70.03 FEET TO A POINT;
- 38) SOUTH 23 DEGREES - 59 MINUTES - 53 SECONDS EAST, 67.33 FEET TO A POINT;
- 39) SOUTH 34 DEGREES - 17 MINUTES - 13 SECONDS EAST, 69.11 FEET TO A POINT;

THENCE, LEAVING SAID ROAD ALONG THE SOUTH LINE OF SAID LOT 9, SOUTH 88 DEGREES - 11 MINUTES - 17 SECONDS WEST, 1416.9 FEET TO THE POINT OF BEGINNING, PASSING AN IRON PIN FOUND AT 24.70 FEET, AND CONTAINING 87.5510 ACRES MORE OR LESS.

SUBJECT TO ALL LEGAL HIGHWAYS AND EASEMENTS OF RECORD.

BEARINGS DESCRIBED HEREIN ARE BASED UPON ASSUMED AZIMUTH AND TO BE USED FOR ANGLE PURPOSES ONLY.

IRON PINS SET ARE 5/8" REBAR WITH YELLOW IDENTIFICATION CAP (FINLEY S-7222).

- BEING ALL OF AUDITOR'S PARCEL #42-50-14-06-000 - 2.7402 ACRES
- AND ALL OF AUDITOR'S PARCEL #42-5D-14-03-000 - 15.7658 ACRES
- AND ALL OF AUDITOR'S PARCEL #42-50-03-19-001 - 58.6665 ACRES
- AND ALL OF AUDITOR'S PARCEL #42-50-03-20-000 - 10.3785 ACRES.

THIS DESCRIPTION, WRITTEN ON MARCH 21, 2000, IS BASED ON AN ACTUAL SURVEY OF THE PREMISES BY TERRY J. FINLEY, OHIO REGISTERED SURVEYOR #S-7222.

OFFICE COPY  
NOT RECORDABLE  
TERRY J. FINLEY  
REGISTERED SURVEYOR #S-7222

DESCRIPTION FILED  
FOR AUDITOR'S RECORD  
BY [Signature]  
3-22-2000



**TERRY J. FINLEY SURVEYING & MAPPING**

155 Mockingbird Hill, Zanesville, OH 43701

Phone or Fax: (740) 454-8721

Ohio Registered Surveyor #S-7222

State: OHIO

City:

County: MUSKINGUM

Subdivision:

Township: MONROE

Plat Book:

Page:

Lot #:

Section: 2ND. 1/4 T-3, R-5.

Deed Volume: 1038

Page:

513

TRACT III

PT. LOTS 24&9, 3RD 1/4, T-3, R-5

**SURVEY PLAT FOR:** MARY PRINCE

**Auditor's Parcel #:** ALL 42-50-14-00-000

2,7402 AC. +-

ALL 42-50-14-03-000

15.7650 AC. +-

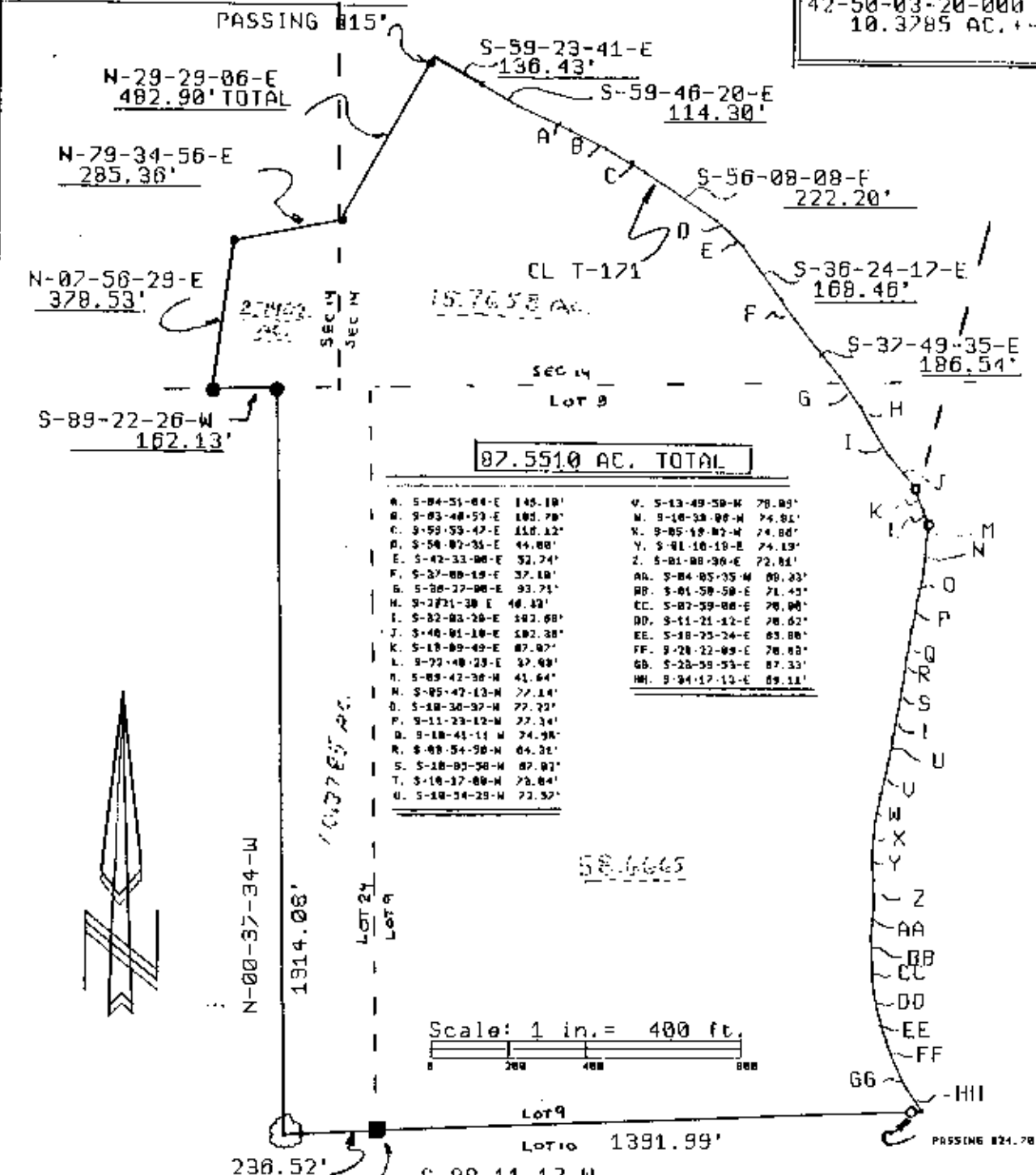
42-50-03-19-001 ALL

58.6665 AC. +-

42-50-03-20-000 ALL

10.3785 AC. +-

Bearings shown herein are based upon:  
ASSUMED AZIMUTH, FOR ANGLE  
PURPOSES ONLY.



87.5510 AC. TOTAL

Scale: 1 in. = 400 ft.

**LEGEND:**

- Iron pin set (5/8" rebar w/cap)
- Iron pin found
- Stone found
- Axle found
- Railroad spike found

This plat drawn on MARCH 21

**OFFICE COPY NOT RECORDABLE**  
Terry J. Finley, Registered Surveyor #S-7222

