

42-90-22-08 ✓
N/A

42-90-22-03-001
N/A

LANDMARK SURVEYS

727 Cambridge Road
Coshocton, Ohio 43812

EARL R. DONAKER, P.S.

(614) 623-0993
1-800-842-3264

WILLIAM D & GLENNA HAMILTON 68 538 Acres



Being 68.538 acres, more or less, (12.189 acres, all of parcel 42-90-21-08, in the northwest quarter of section 21). (56.349 acres, part of parcel 42-90-22-03, in the northeast quarter of section 22), in the fourth quarter of township 3 north, range 5 west, United States Military Lands, in the township of Monroe, in the county of Muskingum, in the State of Ohio, and more particularly described as follows:

Commencing at a 5/8" rebar found at the southeast corner of the northeast quarter of section 22;

thence, with the section line the following 2 courses:

- 1. thence, N.00°58'31"W. 861.27' to a 5/8" steel pin set;
- 2. thence, continuing N.00°58'31"W. 35.00' to a railroad spike set in the centerline of C.R. 101, Lookout Road, said railroad spike set being the TRUE POINT OF BEGINNING;

thence, with the centerline of C.R. 101, Lookout Road, and through the property of William D. & Glenna Hamilton, 723/56, the following 2 courses:

- 1. thence, S.56°16'00"W. 708.27' to a point;
- 2. thence, S.62°24'00"W. 172.24' to a point;

thence, through the property of William D. & Glenna Hamilton, 723/56, S.01°00'00"E. 16.82' to a point;

thence, with the property line of Helen C. Hansel, 975/5, and generally with the centerline of the old road, the following 5 courses:

- 1. thence, S.60°15'00"W. 116.82' to a point;
- 2. thence, S.75°15'00"W. 429.00' to a point;
- 3. thence, S.63°45'00"W. 421.08' to a point;
- 4. thence, S.76°45'00"W. 198.00' to a 5/8" steel pin set;
- 5. thence, with the east & west quarterline, N.89°46'13"W. 462.00' to a point in C.R. 101, Lookout Road;

thence, with the property line of Betty E. Wharton, 681/179, the following 3 courses:

- 1. thence, N.00°13'49"E. 25.00' to a 5/8" steel pin set;
- 2. thence, continuing N.00°13'49"E. 400.72' to a stone found;
- 3. thence, continuing N.00°13'49"E. 330.00' to a 5/8" steel pin set;

thence, with the property line of Betty E. Wharton, 681/179, and the property line of Abe A. Keim, 835/41, and Fred Hershberger, 913/172, S.88°27'30"E. 984.82' to a 5/8" steel pin set;

thence, with the property line of Abe A. Keim, 835/41, and Fred Hershberger, 913/172, the following 4 courses:

- 1. thence, N.00°00'40"W. 1125.30' to a stone found;
- 2. thence, N.89°56'00"E. 1286.25' to a point;
- 3. thence, N.00°58'31"W. 15.47' to a 5/8" steel pin set;
- 4. thence, N.00°58'31"W. 401.31' to a stone found;

PAGE TWO

thence, with the property line of Mary A. Hamilton, 1013/548, the following 8 courses:

1. thence, N. 89°01'29"E. 591.49' to a point;
2. thence, S. 14°22'49"W. 346.07' to a point;
3. thence, S. 20°07'49"W. 111.90' to a point;
4. thence, S. 03°07'49"W. 167.85' to a point;
5. thence, S. 18°22'49"W. 184.43' to a point;
6. thence, S. 26°52'11"E. 200.32' to a point;
7. thence, S. 63°52'49"W. 306.00' to a point;
8. thence, S. 32°37'49"W. 355.74' to a point to the TRUE POINT OF BEGINNING, containing 68.538 acres, more or less, including public road right-of-way and is subject to all easements, rights-of-way, or restrictions, whether recorded or implied

Bearings are based on Deed Book 723, page 56, and are for angular calculations only. N. 75°15'00"E. All 5/8" steel pins set are 30" long with plastic cap marked "E.R.D. 7142".

Pertinent documents: tax maps: Monroe Twp., 42-90; deeds: 723/56, 835/39, 835/41, 1013/548, 890/59, 984/199, 957/5, 681/179, 913/172; surveys by: Frank W. Newhart, T.C. Connor, Raymond M. Roberts, Karl C. MaWorter.

Prior deed: 723/56.

Description and plat by Landmark Surveys, Earl R. Donaker, Professional Surveyor, #7142, from a survey of the premises in the month of February, in the year of our Lord one thousand nine hundred and ninety-three

**OFFICE COPY
NOT RECORDABLE**

DESCRIPTION APPROVED
FOR AUDITOR'S TRANSFER

BY *A. R. Donaker*

2-19-93

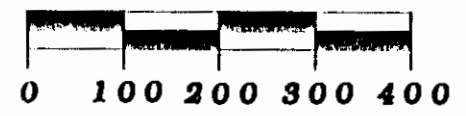
THIS PROPERTY IS SUBJECT TO ALL EASEMENTS, RIGHTS-OF-WAY, OR RESTRICTIONS, WHETHER RECORDED OR IMPLIED.

727 Cambridge Road
Coshocton, Ohio 43812

LANDMARK SURVEYS
EARL R. DONAKER, P.S.

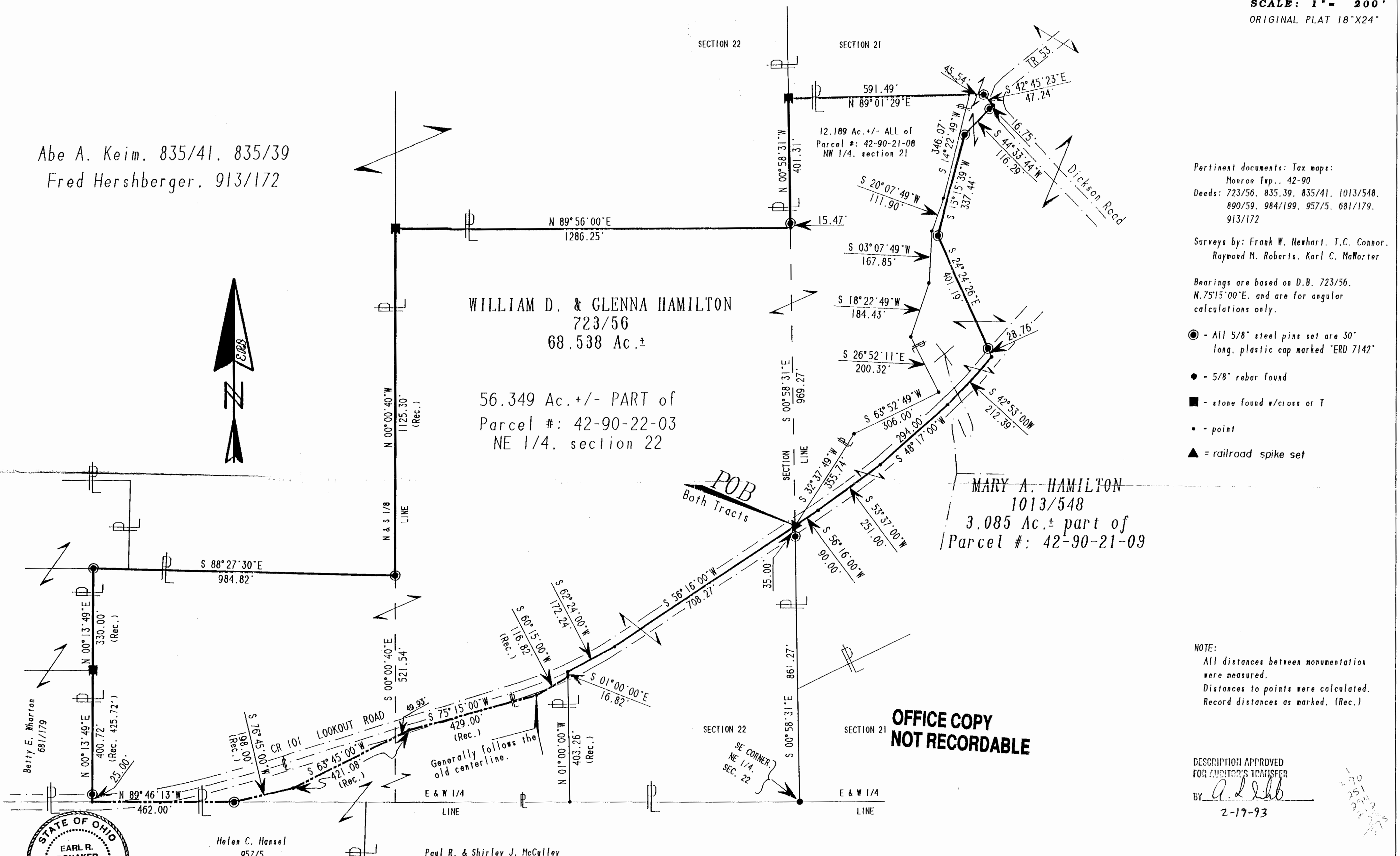
tel: (614) 623-0993
1-800-842-3264

42-90-22-03-001
N/A



SCALE: 1" = 200'
ORIGINAL PLAT 18" X 24"

Abe A. Keim. 835/41. 835/39
Fred Hershberger. 913/172



Pertinent documents: Tax maps:
Monroe Twp., 42-90
Deeds: 723/56, 835/39, 835/41, 1013/548,
890/59, 984/199, 957/5, 681/179,
913/172

Surveys by: Frank W. Newhart, T.C. Connor,
Raymond M. Roberts, Karl C. MaWorter

Bearings are based on D.B. 723/56,
N.75°15'00"E, and are for angular
calculations only.

● - All 5/8" steel pins set are 30"
long, plastic cap marked "ERD 7142"

● - 5/8" rebar found

■ - stone found w/cross or T

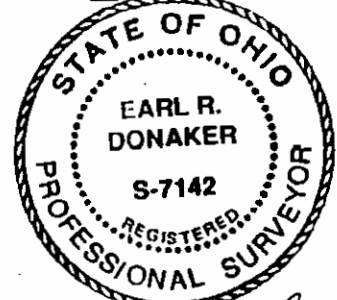
• - point

▲ = railroad spike set

NOTE:
All distances between monumentation
were measured.
Distances to points were calculated.
Record distances as marked. (Rec.)

**OFFICE COPY
NOT RECORDABLE**

DESCRIPTION APPROVED
FOR AUDITOR'S TRANSFER
By: *A. J. [Signature]*
2-19-93



I, Earl R. Donaker, P. S. 7142, hereby
certify this plat to represent a boundary
survey pursuant to Chapter 4733-37, Ohio
Administrative Code, and to be correct to
the best of my knowledge and belief.

Helen C. Hansel
957/5

Paul R. & Shirley J. McCulley
984/199

"Remove not the old landmark." Proverbs 23:10

WILLIAM D. & GLENNA HAMILTON	MARY A. HAMILTON
ACRES: 68.533 +/-	ACRES: 3.085 +/-
NW 1/4, S 21, NE 1/4, S 22	SECTION: NW 1/4, 21
FOURTH QUARTER, T 3N.R 5W.	FOURTH QUARTER, T 3N.R 5W.
UNITED STATES MILITARY LANDS	UNITED STATES MILITARY LANDS
TOWNSHIP: MONROE	TOWNSHIP: MONROE
COUNTY: MUSKINGUM, OHIO	COUNTY: MUSKINGUM, OHIO
DATE: FEBRUARY, 1993	DATE: FEBRUARY, 1993