

Baseline Surveying, Inc.

Land Surveying and Construction Layout

3010 East Pike
Zanesville, OH 43701

Telephone (740) 453-4850
Email: bei@rroho.com

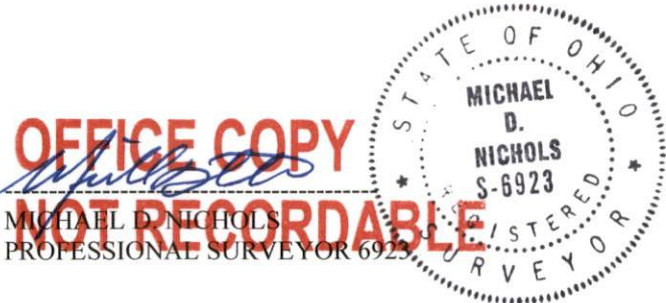
CONTAINING 0.006 ACRES, SUBJECT TO ALL APPLICABLE EASEMENTS.

NOT TO BE USED AS A SEPARATE BUILDING SITE OR TRANSFERRED AS AN INDEPENDENT PARCEL
IN THE FUTURE WITHOUT PLANNING COMMISSION APPROVAL IN ACCORDANCE WITH
APPLICABLE SUBDIVISION REGULATIONS.

BEARINGS ARE BASED ON OHIO STATE PLANE COORDINATE SYSTEM 1983(2011), OHIO SOUTH
ZONE, GRID, DERIVED FROM A GPS OBSERVATION.

ALL IRON PINS SET ARE 5/8 INCH X 30 INCH REBAR WITH PLASTIC IDENTIFICATION CAPS
(BASELINE PS6923-PS8536).

I, MICHAEL D. NICHOLS, PS 6923, HEREBY CERTIFY TO THE BEST OF MY KNOWLEDGE AND BELIEF
THE SURVEY AND DESCRIPTION TO BE CORRECT AS PREPARED BY ME, THIS 30th DAY OF
AUGUST, 2022, FROM A FIELD SURVEY COMPLETED BY ME ON THE 29th DAY OF AUGUST, 2022.



DESCRIPTION
APPROVED
By: AJW 9/6/22

APPROVED
MUSKINGUM COUNTY
PLANNING COMMISSION DIRECTOR
9/6/22
Date Fee Paid