

TRACT B**0.750 Acres located in Perry Township, Muskingum County, State of Ohio**

This is a description of a lot-split from the lands of Elizabeth A. Burton (the Grantor) as recorded in (vol.1693, pg.232) [PP#51-10-02-24-000] of the Muskingum County Records, being part of the Southeast Quarter of Section 2, Township 1, Range 6, Perry Township, Muskingum County, Ohio, which is further described as follows:

Note: The angular variation between lines is based upon a Solar Observation, +/- 20", all pins called out as set are 5/8" x 30" Capped ReBars.

Beginning at a steel pin set at the Southeast corner of the herein described tract on the East line of the said lands of the Grantor and the West line of the lands of Randy L. & Cora L. Ross (vol.807, pg.87), said pin being located by the following five (5) courses from a point at the Southwest corner of the said Southeast Quarter of Section 2, said point being witnessed by a steel pin recovered N 2° 53' 38" E a distance of 47.00' along the West line of the said Southeast Quarter of Section 2 and at the Northeast corner of the lands of C & D Marling (vol.1005, pg.146):

- (1) With the South line of the said Southeast Quarter of Section 2, S 85°52' 02" E a distance of 75.43' to a recovered steel pin;
 - (2) Continuing with the said South line of the Southeast Quarter of Section 2, continuing S 85° 52' 02" E a distance of 25.44' to a point in the center of Arch Hill Road (CR-82), said point being the Southwest corner of the said lands of the Grantor;
 - (3) Continuing with the said South line of the Southeast Quarter of Section 2 and the South line of the said lands of the Grantor, continuing S 85° 52' 02" E a distance of 65.76' to a recovered steel pin;
 - (4) Continuing with the said South line of the Southeast Quarter of Section 2 and the said South line of the lands of the Grantor, continuing S 85° 52' 02" E a distance of 590.03' to a steel axle recovered at the Southeast corner of the said lands of the Grantor and the Southwest corner of the lands of Randy L. & Cora L. Ross (vol.807, pg.87);
 - (5) With the East line of the said lands of the Grantor and the West line of the said lands of Ross, N 3° 46' 11" E a distance of 178.44' to the said Beginning point;
- Thence through the said lands of the Grantor with the following two (2) courses;
- (1) N 86° 29' 07" W a distance of 557.33' to a set steel pin;
 - (2) Continuing N 86° 29' 07" W a distance of 30.00' to a point in the center of Arch Hill Road (CR-82) and the East line of the lands of R. & E. Kelly (vol.646, pg.134);
- Thence with the said center line of Arch Hill Road (CR-82) and the said East line of R. & E. Kelly, N 14° 22' 00" E a distance of 25.46' to a point;
- Thence again through the said lands of the Grantor with the following four (4) courses;
- (1) S 86° 29' 07" E a distance of 20.65' to a recovered steel axle;
 - (2) Continuing S 86° 29' 07" E a distance of 412.00' to a set steel pin;
 - (3) N 11° 32' 18" E a distance of 80.60' to a set steel pin;
 - (4) N 5° 25' 34" E a distance of 57.41' to a steel pin set on the North line of the said lands of the Grantor and the South line of the lands of Eugene & Ruth Kelly (vol.1152, pg.613);
- Thence with the said North line of the lands of the Grantor and the said South line of the lands of Kelly, S 77° 49' 59" E a distance of 138.93' to a steel axle recovered at the Northeast corner of the said lands of the Grantor and on the said West line of Ross;
- Thence with the said East line of the lands of the Grantor and the said West line of Ross, S 3° 46' 11" W a distance of 141.29' to the point of Beginning.

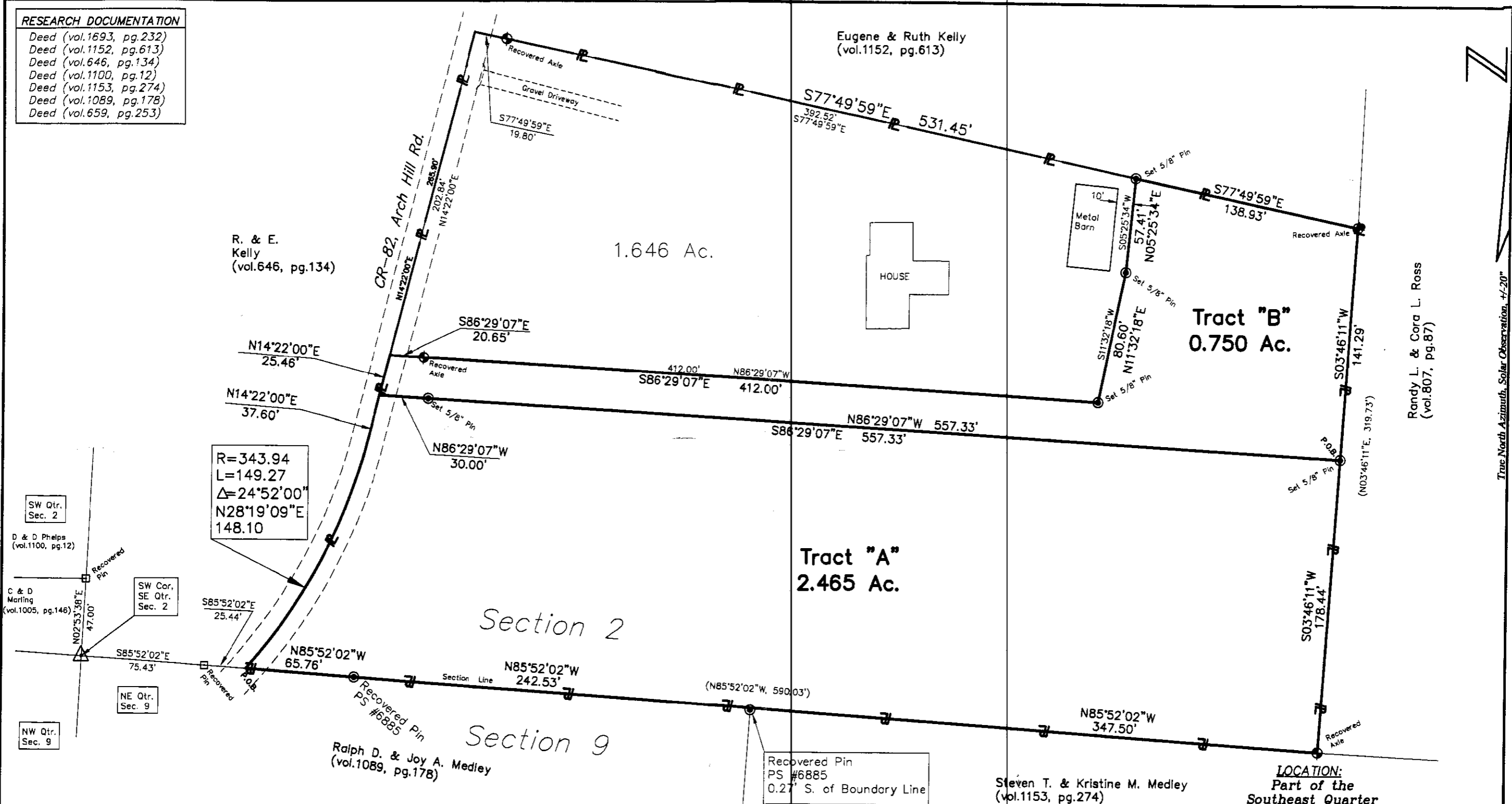
This tract contains 0.750 acres more or less as surveyed by George W. Stewart, Professional Surveyor No.6357, September 25, 2002.

**OFFICE COPY
NOT RECORDABLE**

DESCRIPTION APPROVED
FOR AUDITOR'S TRANSFER
BY ASB
4-5-04

RESEARCH DOCUMENTATION

- Deed (vol.1693, pg.232)
- Deed (vol.1152, pg.613)
- Deed (vol.646, pg.134)
- Deed (vol.1100, pg.12)
- Deed (vol.1153, pg.274)
- Deed (vol.1089, pg.178)
- Deed (vol.659, pg.253)



SW Qtr. Sec. 2

D & D Phelps (vol.1100, pg.12)

C & D Marling (vol.1005, pg.146)

SW Cor. SE Qtr. Sec. 2

NW Qtr. Sec. 9

NE Qtr. Sec. 9

Lands of Elizabeth A. Burton
 (vol.1693, pg.232)
 Total Area 4.861 Ac.
 PP #51-10-02-24-000

Revisions
2/23/04 Mod. Old House Parcel



Tract "A"
2.465 Ac.

Tract "B"
0.750 Ac.

Section 2

Section 9

Ralph D. & Joy A. Medley
 (vol.1089, pg.178)

Steven T. & Kristine M. Medley
 (vol.1153, pg.274)

LOCATION:
 Part of the Southeast Quarter of Section 2 Township 1, Range 6 Perry Township, Muskingum County Ohio

DESCRIPTION APPROVED FOR AUDITOR'S TRANSFER BY *[Signature]*

4-5-2004

OFFICE COPY NOT RECORDABLE

LANDS OF ELIZABETH A. BURTON
 2070 Arch Hill Rd. (CR-82)

RAVENTECK, LTD.
 SURVEYORS
 20769 COUNTY ROAD #6
 COSHOCTON, OHIO 43812-9148
 PHONE: (740) 622-8922 FAX: (740) 623-8865

Scale: 1"=60' Sept. 25, 2002 Sheet 1 of 1

True North Azimuth, Solar Observation, +1.20"