

OLD HOUSE DESCRIPTION

1.646 Acres located in Perry Township, Muskingum County, State of Ohio

This is a description of a lot-split from the lands of Elizabeth A. Burton (the Grantor) as recorded in (vol.1693, pg.232) [PP#51-10-02-24-000] of the Muskingum County Records, being part of the Southeast Quarter of Section 2, Township 1, Range 6, Perry Township, Muskingum County, Ohio, which is further described as follows:

Note: The angular variation between lines is based upon a Solar Observation, +/- 20", all pins called out as set are 5/8" x 30" Capped ReBars.

Beginning at a steel pin set at the Northeast corner of said lot-split tract on the North line of the said lands of the Grantor and the South line of the lands of Eugene & Ruth Kelly (vol.1152, pg.613), said pin being located by the following six (6) courses from a point at the Southwest corner of the said Southeast Quarter of Section 2, said point being witnessed by a steel pin recovered N 2° 53' 38" E a distance of 47.00' along the West line of the said Southeast Quarter of Section 2 and at the Northeast corner of the lands of C & D Marling (vol.1005, pg.146):

- (1) With the South line of the said Southeast Quarter of Section 2, S 85°52' 02" E a distance of 75.43' to a recovered steel pin;
- (2) Continuing with the said South line of the Southeast Quarter of Section 2, continuing S 85° 52' 02" E a distance of 25.44' to a point in the center of Arch Hill Road (CR-82), said point being the Southwest corner of the said lands of the Grantor;
- (3) Continuing with the said South line of the Southeast Quarter of Section 2 and the South line of the said lands of the Grantor, continuing S 85° 52' 02" E a distance of 65.76' to a recovered steel pin;
- (4) Continuing with the said South line of the Southeast Quarter of Section 2 and the said South line of the lands of the Grantor, continuing S 85° 52' 02" E a distance of 590.03' to a steel axle recovered at the Southeast corner of the said lands of the Grantor;
- (5) With the East line of the said lands of the Grantor, N 3° 46' 11" E a distance of 319.73' to a steel axle recovered at the Northeast corner of the said lands of the Grantor;
- (6) With the North line of the said lands of the Grantor, N 77° 49' 59" W a distance of 138.93' to the said Beginning point;

Thence through the said lands of the Grantor with the following four (4) courses;

- (1) S 5° 25' 34" W a distance of 57.41' to a set steel pin;
- (2) S 11° 32' 18" W a distance of 80.60' to a set steel pin;
- (3) N86°29'07"W a distance of 412.00' to a recovered steel axle;
- (4) Continuing N86°29'07"W a distance of 20.65' to a point in the center line of said Arch Hill Road (CR-82), said point also being on the East line of the said lands of R. & E. Kelly (vol.646, pg.134);

Thence with the said center line of Arch Hill Road (CR-82) and the said East line of R. & E. Kelly, N14° 22' 00"E a distance of 202.84' to a point at the Northwest corner of the said lands of the Grantor and the Southwest corner of the said lands of Eugene & Ruth Kelly;

Thence with the said North line of the lands of the Grantor and the South line of the said lands of Eugene & Ruth Kelly with the following two (2) courses;

- (1) S77°49'59"E a distance of 19.80' to a recovered steel axle;
- (2) Continuing S77°49'59"E a distance of 392.52' to the point of Beginning.

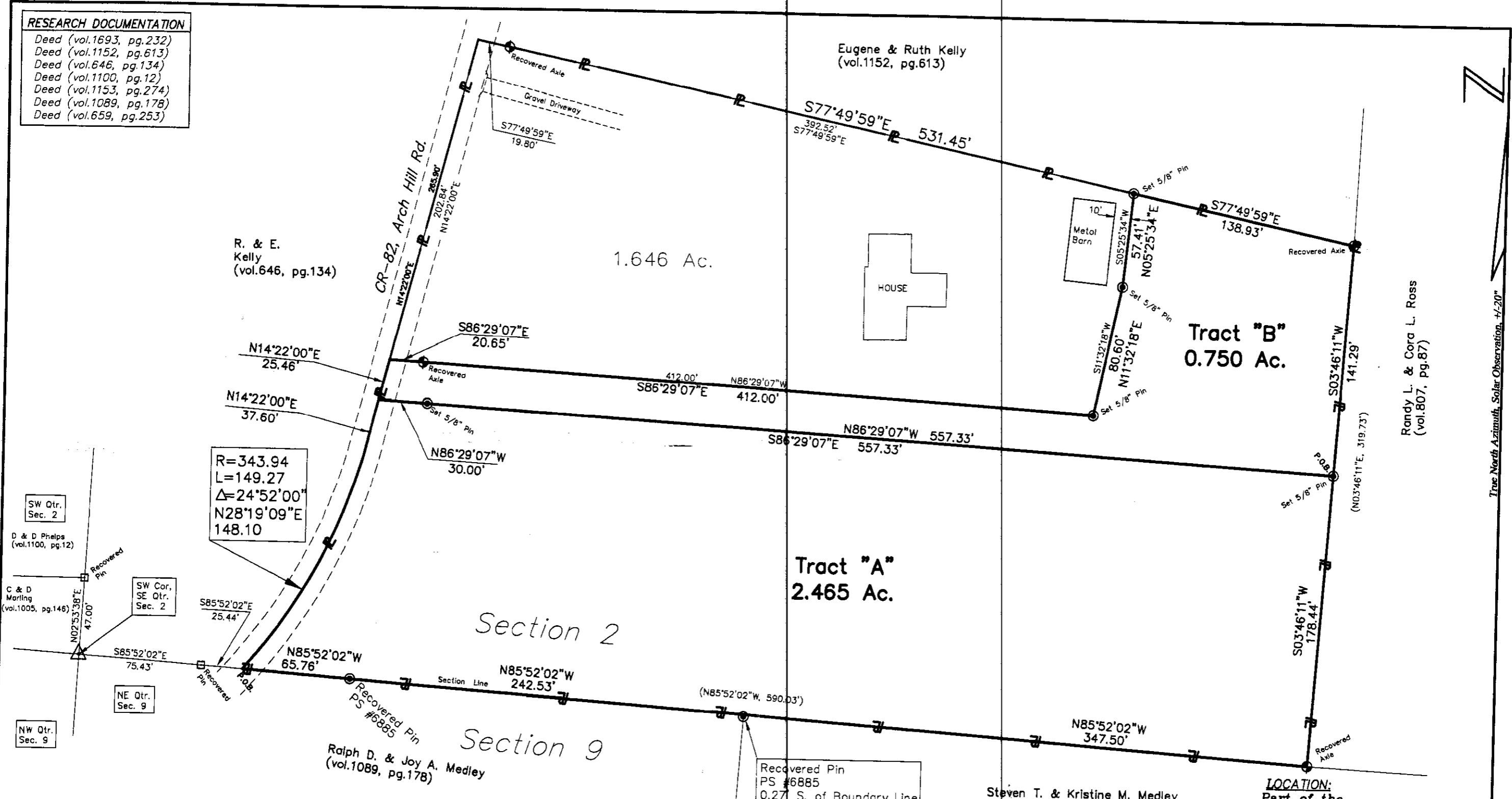
This tract contains 1.646 acres more or less as surveyed by George W. Stewart, Professional Surveyor No.6357, September 25, 2002.

**OFFICE COPY
NOT RECORDABLE**

DESCRIPTION APPROVED
FOR A/DITOR'S TRANSFER
BY [Signature]
4-5-2004

RESEARCH DOCUMENTATION

- Deed (vol.1693, pg.232)
- Deed (vol.1152, pg.613)
- Deed (vol.646, pg.134)
- Deed (vol.1100, pg.12)
- Deed (vol.1153, pg.274)
- Deed (vol.1089, pg.178)
- Deed (vol.659, pg.253)



R=343.94
L=149.27
Δ=24°52'00"
N28°19'09"E
148.10

SW Qtr. Sec. 2
D & D Phelps (vol.1100, pg.12)
C & D Marling (vol.1005, pg.146)
NE Qtr. Sec. 9
NW Qtr. Sec. 9

Ralph D. & Joy A. Medley
(vol.1089, pg.178)

Tract "A"
2.465 Ac.

Tract "B"
0.750 Ac.

Section 2

Section 9

Lands of Elizabeth A. Burton
(vol.1693, pg.232)
Total Area 4.861 Ac.
PP #51-10-02-24-000

Revisions
2/23/04 Mod. Old House Parcel



DESCRIPTION APPROVED FOR AUDITOR'S TRANSFER BY *[Signature]* 9-5-2007

OFFICE COPY NOT RECORDABLE

Steven T. & Kristine M. Medley
(vol.1153, pg.274)

LOCATION:
Part of the Southeast Quarter of Section 2 Township 1, Range 6 Perry Township, Muskingum County Ohio

LANDS OF ELIZABETH A. BURTON
2070 Arch Hill Rd. (CR-82)
RAVENTECK, LTD. SURVEYORS
20769 COUNTY ROAD #6
COSHOCOTON, OHIO 43812-9148 FAX: (740) 623-8865
PHONE: (740) 622-8922
Scale: 1"=60' Sept. 25, 2002 Sheet 1

True North Azimuth, Solar Observation, +/-20"