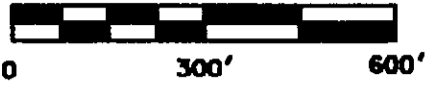


SURVEY PLAT FOR CRIMSON KING FARMS, L.L.C.

SITUATED IN THE NORTHWEST QUARTER OF SECTION 9, T-1-N, R-6-W, U.S.M.L.  
 PERRY TOWNSHIP, MUSKINGUM COUNTY, OHIO. BEING PART OF LOTS 4 AND 10 OF  
 HARVEST HILLS ESTATES RECORDED IN THE MUSKINGUM COUNTY PLAT RECORDS.

NORTH IS BASED UPON  
 AN ASSUMED MERIDIAN

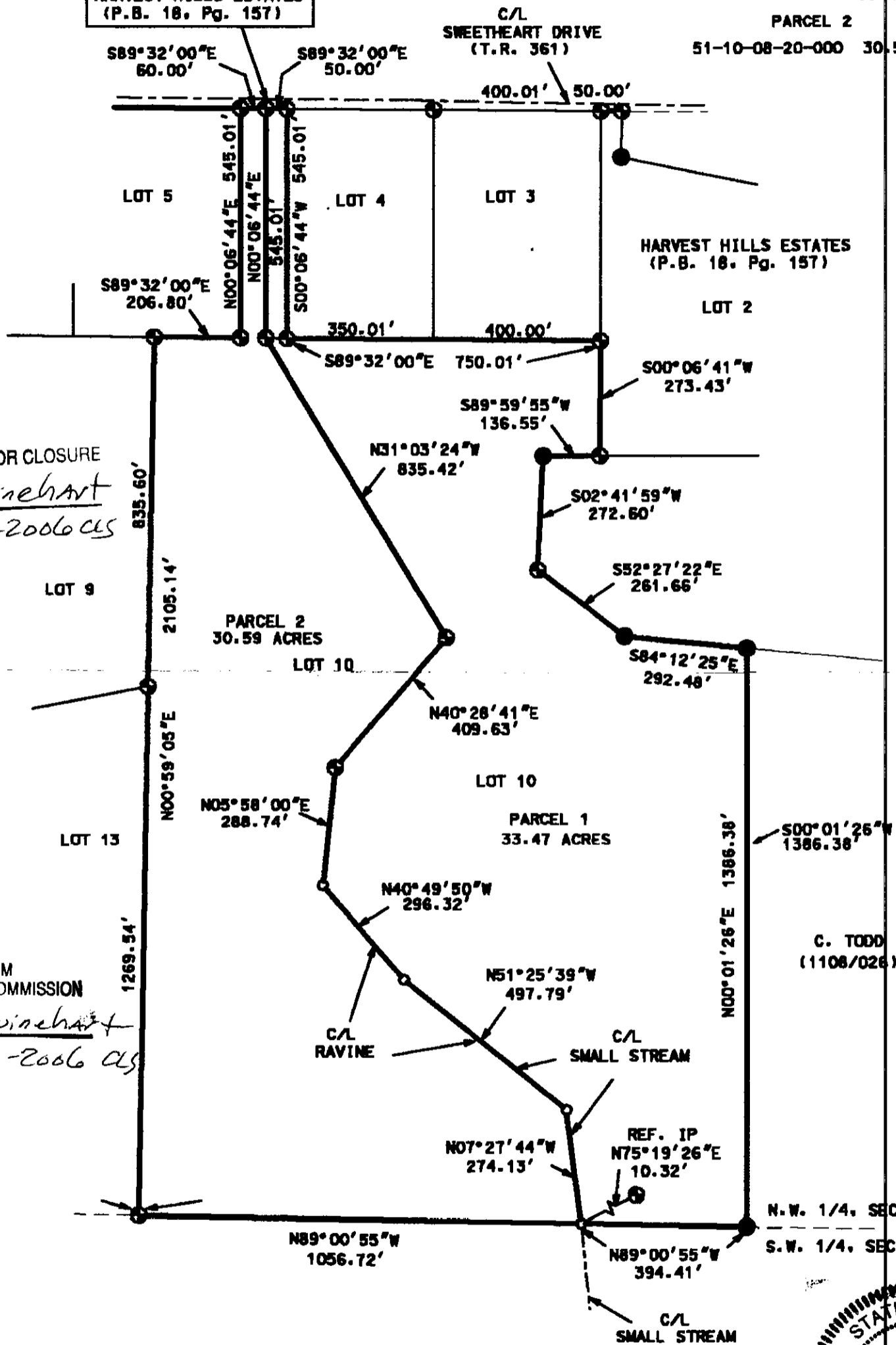
SCALE 1" = 300'



P.O.B.  
 N.W. COR., LOT 4  
 HARVEST HILLS ESTATES  
 (P.B. 18, Pg. 157)

PART OF AUDITORS PARCEL

PARCEL 1	
51-10-08-20-000	32.84 ACRES
51-10-08-14-000	0.63 ACRES
	33.47 ACRES
PARCEL 2	
51-10-08-20-000	30.59 ACRES



APPROVED FOR CLOSURE  
*A.L. Swinehart*  
 5-2-2006 CLS

EXEMPT FROM  
 PLANNING COMMISSION  
*A.L. Swinehart*  
 5-2-2006 CLS



- LEGEND
- IRON PIN FOUND
  - ⊙ 5/8" X 30" REBAR SET W/ I.D. CAP
  - POINT
  - ▣ STONE FOUND
  - CENTERLINE

I CERTIFY THIS DRAWING WAS PREPARED  
 FROM AN ACTUAL FIELD SURVEY CONDUCTED

*Stephen M. Bowman*  
 STEPHEN M. BOWMAN, P.S. #7135

OFFICE COPY  
 NOT RECORRABLE

**BOWMAN SURVEYING**  
 38 N. 4TH STREET, RM. 103  
 ZANESVILLE, OHIO 43701  
 PHONE/FAX 740-454-0496  
 JOB: M-06142      DATE: 04/24/06