

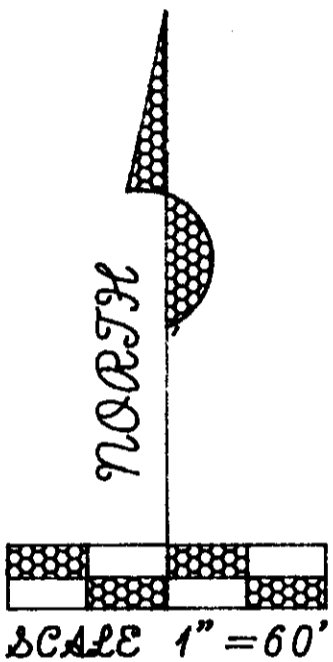
Being a part of the North half of section 11
 Perry Township, quarter township 1, township
 1, North, range 6, West, Muskingum county,
 Ohio

Bearings based on a previous survey and are for
 angular calculation only

Northeast corner sec.11,
 Quarter township 1, T-1-N
 R-6-W Perry twp.

Ledgend

- = Iron pin with i.d. cap set
- = Iron pin found
- ⊙ = concrete mon. found



S71°-47'-04"W

S06°-41'-00"W
 405.02'

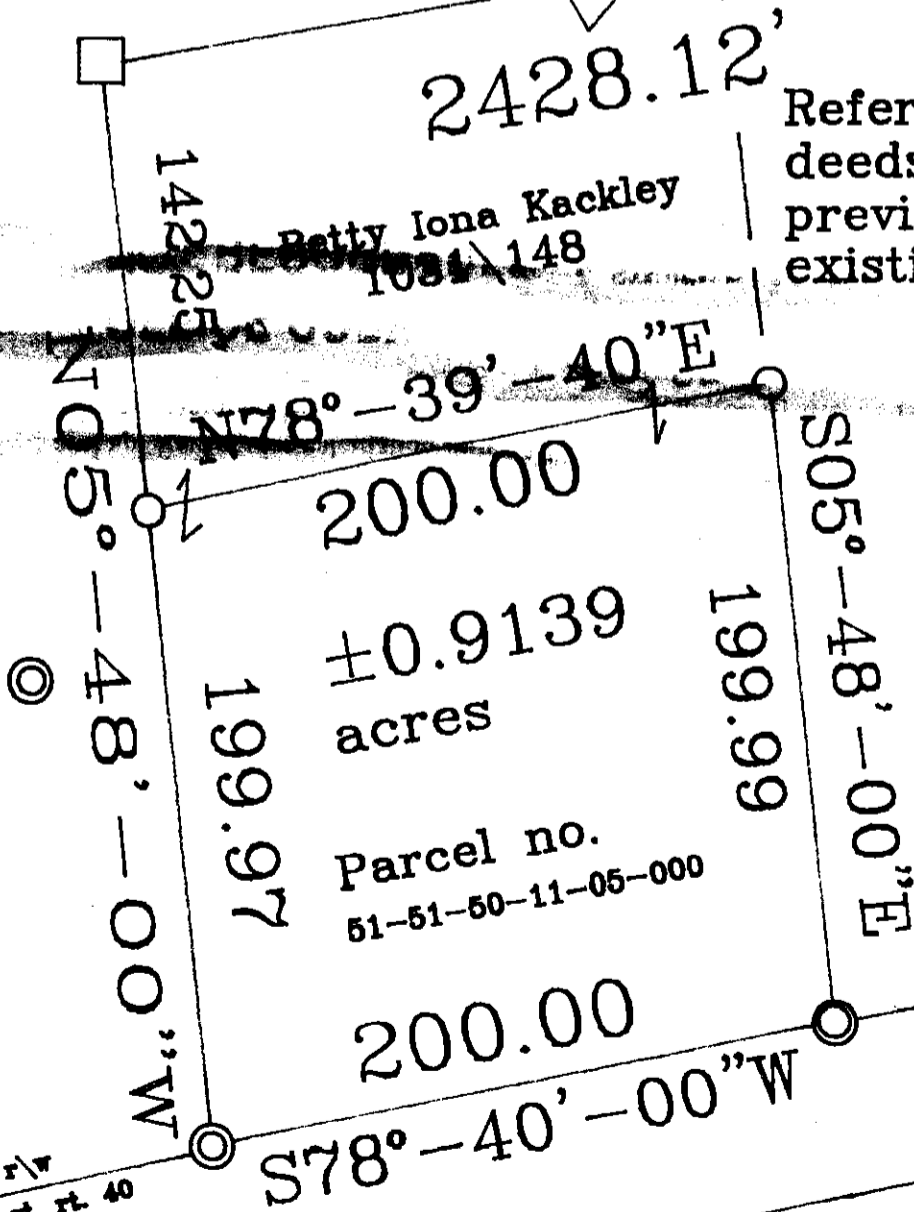
DESCRIPTION APPROVED
 FOR AUDITORS TRANSFER

BY ASB
 7-20-95

References
 deeds as noted
 previous surveys of record
 existing monumentation

Betty Iona Kackley
 1034\148

Mary Weingartner
 1003\438



C. Lightizer
 767\134



Plat prepared from an actual
 survey by Steven B. Walton
 Ohio professional surveyor
 no. S-7675

OFFICE COPY
 NOT BE RECORDED

State rt. #40