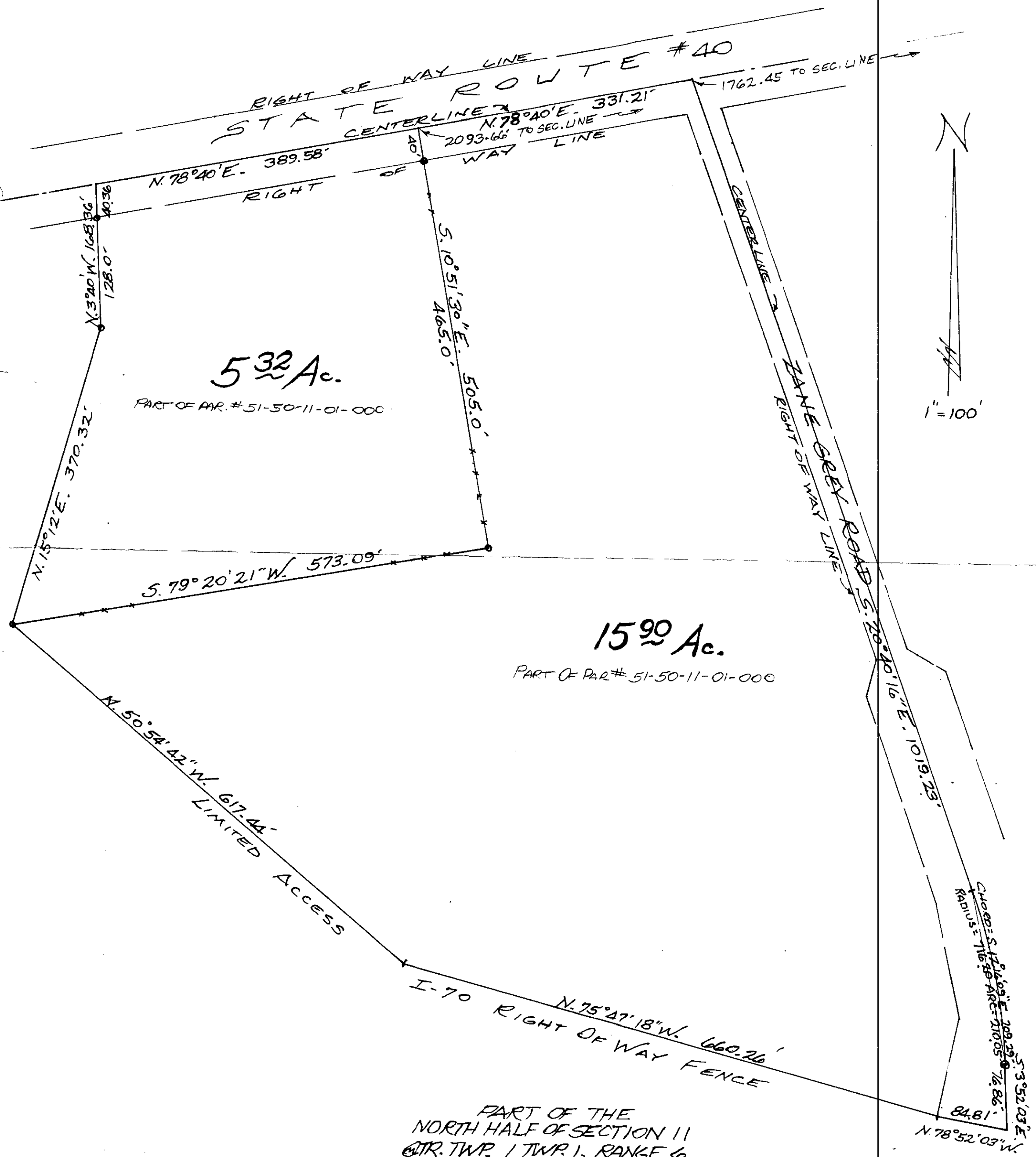


RIGHT OF WAY LINE
STATE ROUTE #40
CENTERLINE

5.32 Ac.
PART OF PAR. # 51-50-11-01-000

15.90 Ac.
PART OF PAR. # 51-50-11-01-000



PART OF THE
NORTH HALF OF SECTION 11
QTR. TWP. 1 TWP. 1, RANGE 6
PERRY TOWNSHIP
MUSKINGUM COUNTY OHIO
MAY 18, 1990

DESCRIPTION APPROVED
FOR AUDITOR'S TRANSFER
BY J. L. Hambl
1-17-91

L. PETER DINAN
SURVEYING & MAPPING
27 South Sixth Street