

3120 Lisa Lane
Zanesville, OH 43701

W. J. Biedenbach & Associates

Surveying and Mapping

Telephone (614) 453-4850
Fax (614) 450-1000

CAROL GOFF *03-03-00*
AUDITORS PARCEL NUMBER 51-51-80-03-000 (PART)
LOT 13 OF COBBLE POND SUBDIVISION

BEING A PART OF THE EAST HALF OF QUARTER TOWNSHIP 3, TOWNSHIP 1, RANGE 6, OF THE UNITED STATES MILITARY LANDS, PERRY TOWNSHIP, MUSKINGUM COUNTY, OHIO AND BEING FURTHER DESCRIBED AS FOLLOWS:

COMMENCING AT THE CENTER OF QUARTER TOWNSHIP 3; THENCE EAST 1732.50 FEET (DEED) TO A POINT; THENCE SOUTH 89 DEGREES 54 MINUTES 00 SECONDS EAST 163.04 FEET (DEED) TO A POINT; THENCE NORTH 88 DEGREES 41 MINUTES 02 SECONDS EAST 1319.16 FEET (DEED) TO A POINT; THENCE SOUTH 89 DEGREES 54 MINUTES 00 SECONDS EAST 670.15 FEET (DEED) TO A POINT; THENCE NORTH 89 DEGREES 37 MINUTES 44 SECONDS EAST 1232.34 FEET TO AN EXISTING IRON PIN (5/8 INCH REBAR) AT THE SOUTHEAST CORNER OF A TRACT CONVEYED TO H. YOUNG BY DEED RECORDED IN VOLUME 998, PAGE 270 OF THE MUSKINGUM COUNTY DEED RECORDS; THENCE WITH THE EAST LINE OF A TRACT CONVEYED TO H. LIGHTHIZER, BY DEED RECORDED IN VOLUME 975, PAGE 207 OF SAID COUNTY RECORDS, NORTH 01 DEGREES 19 MINUTES 29 SECONDS WEST 3081.12 FEET TO AN IRON PIN SET, SAID POINT BEING THE PLACE OF BEGINNING OF THE TRACT HEREIN INTENDED TO BE DESCRIBED, PASSING AN EXISTING IRON PIN (5/8 INCH REBAR) AT 2868.29 FEET; THENCE CONTINUING NORTH 01 DEGREES 19 MINUTES 29 SECONDS WEST 26.46 FEET TO AN IRON PIN SET; THENCE TRAVERSING THROUGH THE TRACT CONVEYED TO CAROL GOFF BY DEED RECORDED IN VOLUME 1129, PAGE 884 OF THE SAID COUNTY RECORDS THE NEXT FOUR COURSES AND DISTANCES:

- 1) NORTH 35 DEGREES 25 MINUTES 07 SECONDS EAST 300.59 FEET TO AN IRON PIN SET;
- 2) SOUTH 51 DEGREES 49 MINUTES 19 SECONDS EAST 140.16 FEET, ALONG THE SOUTHERLY LINE OF COBBLE POND ROAD, TO AN IRON PIN SET;
- 3) SOUTH 35 DEGREES 25 MINUTES 07 SECONDS WEST 252.48 FEET TO AN IRON PIN SET;
- 4) NORTH 81 DEGREES 19 MINUTES 25 SECONDS WEST 139.04 FEET TO THE PLACE OF BEGINNING.

CONTAINING 0.930 MORE OR LESS ACRES, SUBJECT TO ALL APPLICABLE EASEMENTS

DESCRIPTION APPROVED
FOR AUDITORS TRANSFER

BY *WJ B*
6-12-97

51-80-01-13

W. J. Biedenbach & Associates

3120 Usa Lane
Zanesville, OH 43701

Surveying and Mapping

Telephone (614) 453-4850
Fax (614) 450-1000

SUBJECT TO THE FOLLOWING FIFTEEN FOOT WIDE SANITARY SEWER EASEMENT

BEING A PART OF THE EAST HALF OF QUARTER TOWNSHIP 3, TOWNSHIP 1, RANGE 6, OF THE UNITED STATES MILITARY LANDS, PERRY TOWNSHIP, MUSKINGUM COUNTY, OHIO AND BEING FURTHER DESCRIBED AS FOLLOWS:

COMMENCING AT THE CENTER OF QUARTER TOWNSHIP 3; THENCE EAST 1732.50 FEET (DEED) TO A POINT; THENCE SOUTH 89 DEGREES 54 MINUTES 00 SECONDS EAST 163.04 FEET (DEED) TO A POINT; THENCE NORTH 88 DEGREES 41 MINUTES 02 SECONDS EAST 1319.16 FEET (DEED) TO A POINT; THENCE SOUTH 89 DEGREES 54 MINUTES 00 SECONDS EAST 670.15 FEET (DEED) TO A POINT; THENCE NORTH 89 DEGREES 37 MINUTES 44 SECONDS EAST 1232.34 FEET TO AN EXISTING IRON PIN (5/8 INCH REBAR) AT THE SOUTHEAST CORNER OF A TRACT CONVEYED TO H. YOUNG BY DEED RECORDED IN VOLUME 998, PAGE 270 OF THE MUSKINGUM COUNTY DEED RECORDS; THENCE WITH THE EAST LINE OF A TRACT CONVEYED TO H. LIGHTHIZER, BY DEED RECORDED IN VOLUME 975, PAGE 207 OF SAID COUNTY RECORDS, NORTH 01 DEGREES 19 MINUTES 29 SECONDS WEST 3081.12 FEET TO AN IRON PIN SET, PASSING AN EXISTING IRON PIN (5/8 INCH REBAR) AT 2868.29 FEET; THENCE CONTINUING NORTH 01 DEGREES 19 MINUTES 29 SECONDS WEST 26.46 FEET TO AN IRON PIN SET; THENCE NORTH 35 DEGREES 25 MINUTES 07 SECONDS EAST 122.59 FEET TO THE PLACE OF BEGINNING OF THIS EASEMENT; THENCE CONTINUING NORTH 35 DEGREES 25 MINUTES 07 SECONDS EAST 20.00 FEET TO A POINT; THENCE SOUTH 55 DEGREES 30 MINUTES 12 SECONDS EAST 140.02 FEET TO A POINT; THENCE SOUTH 35 DEGREES 25 MINUTES 07 SECONDS WEST 20.00 FEET TO A POINT; THENCE NORTH 55 DEGREES 30 MINUTES 12 SECONDS WEST 140.02 FEET TO THE PLACE OF BEGINNING.

W. J. Biedenbach & Associates

3120 Usd Lane
Zanesville, OH 43701

Surveying and Mapping

Telephone (614) 453-4850
Fax (614) 450-1000

ALSO SEE FOLLOWING INGRESS AND EGRESS EASEMENT

BEING A PART OF THE EAST HALF OF QUARTER TOWNSHIP 3, TOWNSHIP 1, RANGE 6, OF THE UNITED STATES MILITARY LANDS, PERRY TOWNSHIP, MUSKINGUM COUNTY, OHIO AND BEING FURTHER DESCRIBED AS FOLLOWS:

COMMENCING AT THE CENTER OF QUARTER TOWNSHIP 3; THENCE EAST 1732.50 FEET (DEED) TO A POINT; THENCE SOUTH 89 DEGREES 54 MINUTES 00 SECONDS EAST 163.04 FEET (DEED) TO A POINT; THENCE NORTH 88 DEGREES 41 MINUTES 02 SECONDS EAST 1319.16 FEET (DEED) TO A POINT; THENCE SOUTH 89 DEGREES 54 MINUTES 00 SECONDS EAST 670.15 FEET (DEED) TO A POINT; THENCE NORTH 89 DEGREES 37 MINUTES 44 SECONDS EAST 1232.34 FEET TO AN EXISTING IRON PIN (5/8 INCH REBAR) AT THE SOUTHEAST CORNER OF A TRACT CONVEYED TO H. YOUNG BY DEED RECORDED IN VOLUME 998, PAGE 270 OF THE MUSKINGUM COUNTY DEED RECORDS; THENCE WITH THE EAST LINE OF A TRACT CONVEYED TO H. LIGHTHIZER, BY DEED RECORDED IN VOLUME 975, PAGE 207 OF SAID COUNTY RECORDS, NORTH 01 DEGREES 19 MINUTES 29 SECONDS WEST 3081.12 FEET TO AN IRON PIN SET, PASSING AN EXISTING IRON PIN (3/8 INCH REBAR) AT 2868.29 FEET; THENCE CONTINUING NORTH 01 DEGREES 19 MINUTES 29 SECONDS WEST 26.46 FEET TO AN IRON PIN SET; THENCE NORTH 35 DEGREES 25 MINUTES 07 SECONDS EAST 300.59 FEET TO AN IRON PIN SET, SAID POINT BEING THE PLACE OF BEGINNING OF THIS EASEMENT; THENCE TRAVERSING THROUGH THE TRACTS CONVEYED TO CAROL GOFF BY DEEDS RECORDED IN VOLUME 1129, PAGE 884 (160.635 ACRES) AND VOLUME 1314, PAGE 849 (12.768 ACRES) OF THE SAID COUNTY RECORDS THE NEXT TWENTY FIVE COURSES AND DISTANCES:

- 1) NORTH 51 DEGREES 49 MINUTES 19 SECONDS WEST 24.41 FEET TO A POINT;
- 2) WITH A CURVE TO THE RIGHT HAVING A RADIUS OF 225.00 FEET (CHORD BEARING NORTH 51 DEGREES 11 MINUTES 40 SECONDS WEST 4.93 FEET) AN ARC DISTANCE OF 4.93 FEET TO A POINT;
- 3) NORTH 50 DEGREES 34 MINUTES 00 SECONDS WEST 216.76 FEET TO AN IRON PIN SET, PASSING AN IRON PIN SET AT 207.56 FEET, SAID IRON PIN BEING ON THE EAST LINE OF THE 12.768 MORE OR LESS ACRE TRACT (VOLUME 1314, PAGE 849);
- 4) WITH A CURVE TO THE LEFT HAVING A RADIUS OF 125.00 FEET (CHORD BEARING NORTH 60 DEGREES 57 MINUTES 40 SECONDS WEST 45.11 FEET) AN ARC DISTANCE OF 45.35 FEET TO A POINT;
- 5) WITH A CURVE TO THE RIGHT HAVING A RADIUS OF 150.00 FEET (CHORD BEARING NORTH 41 DEGREES 46 MINUTES 40 SECONDS WEST 148.08 FEET) AN ARC DISTANCE OF 154.87 FEET TO A POINT;
- 6) NORTH 12 DEGREES 12 MINUTES 00 SECONDS WEST 128.82 FEET TO A POINT;
- 7) WITH A CURVE TO THE RIGHT HAVING A RADIUS OF 200.00 FEET (CHORD BEARING NORTH 09 DEGREES 11 MINUTES 08 SECONDS WEST 21.03 FEET) AN ARC DISTANCE OF 21.04 FEET TO A POINT;
- 8) NORTH 06 DEGREES 10 MINUTES 17 SECONDS WEST 107.98 FEET TO A POINT;
- 9) WITH A CURVE TO THE LEFT HAVING A RADIUS OF 150.00 FEET (CHORD BEARING NORTH 15 DEGREES 17 MINUTES 36 SECONDS WEST 47.59 FEET) AN ARC DISTANCE OF 47.79 FEET TO A POINT;
- 10) NORTH 24 DEGREES 55 MINUTES 32 SECONDS WEST 71.75 FEET TO A POINT;
- 11) NORTH 22 DEGREES 03 MINUTES 55 SECONDS WEST 74.88 FEET TO A POINT ON THE NORTH LINE OF THE ABOVE SAID 12.768 ACRE TRACT (VOLUME 1314, PAGE 849);
- 12) NORTH 74 DEGREES 55 MINUTES 31 SECONDS EAST 50.37 FEET, ALONG THE SAID NORTH LINE, TO A POINT;
- 13) SOUTH 22 DEGREES 03 MINUTES 55 SECONDS EAST 67.50 FEET TO A POINT;
- 14) SOUTH 24 DEGREES 55 MINUTES 32 SECONDS EAST 70.94 FEET TO A POINT;
- 15) WITH A CURVE TO THE RIGHT HAVING A RADIUS OF 200.00 FEET (CHORD BEARING SOUTH 15 DEGREES 17 MINUTES 36 SECONDS EAST 63.45 FEET) AN ARC DISTANCE OF 63.72 FEET TO A POINT;
- 16) SOUTH 06 DEGREES 10 MINUTES 17 SECONDS EAST 107.98 FEET TO A POINT;
- 17) WITH A CURVE TO THE LEFT HAVING A RADIUS OF 150.00 FEET (CHORD BEARING SOUTH 09 DEGREES 11 MINUTES 08 SECONDS EAST 15.78 FEET) AN ARC DISTANCE OF 15.78 FEET TO A POINT;
- 18) SOUTH 12 DEGREES 12 MINUTES 00 SECONDS EAST 128.82 FEET TO A POINT;

W. J. Biedenbach & Associates

3120 Lisa Lane
Zanesville, OH 43701

Surveying and Mapping

Telephone (614) 453-4850
Fax (614) 450-1000

- 19) WITH A CURVE TO THE LEFT HAVING A RADIUS OF 100.00 FEET (CHORD BEARING SOUTH 41 DEGREES 46 MINUTES 40 SECONDS EAST 98.72 FEET) AN ARC DISTANCE OF 103.25 FEET TO A POINT;
- 20) WITH A CURVE TO THE RIGHT HAVING A RADIUS OF 175.00 FEET (CHORD BEARING SOUTH 60 DEGREES 57 MINUTES 39 SECONDS EAST 63.15 FEET) AN ARC DISTANCE OF 63.50 FEET TO A POINT;
- 21) SOUTH 50 DEGREES 34 MINUTES 00 SECONDS EAST 216.76 FEET TO A POINT;
- 22) WITH A CURVE TO THE LEFT HAVING A RADIUS OF 175.00 FEET (CHORD BEARING SOUTH 51 DEGREES 11 MINUTES 40 SECONDS EAST 3.83 FEET) AN ARC DISTANCE OF 3.83 FEET TO A POINT;
- 23) SOUTH 51 DEGREES 49 MINUTES 19 SECONDS EAST 164.57 FEET TO A POINT;
- 24) SOUTH 38 DEGREES 10 MINUTES 41 SECONDS WEST 50.00 FEET TO AN IRON PIN SET;
- 25) NORTH 51 DEGREES 49 MINUTES 19 SECONDS WEST 140.16 FEET TO THE PLACE OF BEGINNING.

ALL IRON PINS SET ARE 5/8 INCH X 30 INCH REBAR WITH PLASTIC IDENTIFICATION CAPS (BIEDENBACH PS5718-PS6923).

THE BEARINGS ARE BASED ON THE EAST LINE OF THE PREVIOUS SURVEY OF 12.768 MORE OR LESS ACRE TRACT AS SURVEYED BY W. J. BIEDENBACH REGISTERED SURVEYOR NO. 5718 AND DATED JULY 11, 1986 (VOLUME 982, PAGE 271).

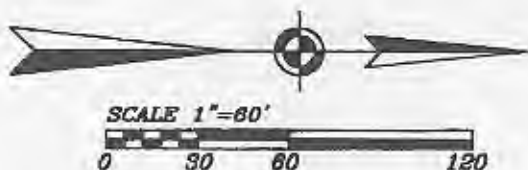
I HEREBY CERTIFY TO THE BEST OF MY KNOWLEDGE AND BELIEF THE SURVEY AND DESCRIPTION TO BE CORRECT AS PREPARED BY ME, THIS 29TH DAY OF MAY 1997.

**OFFICE COPY
NOT RECORDABLE**

W. J. BIEDENBACH
REGISTERED SURVEYOR 5718

SURVEY OF LOT 13 OF COBBLEPOND SUBDIVISION

AUDITORS PARCEL NUMBER
51-51-80-03-03-000 (PART)



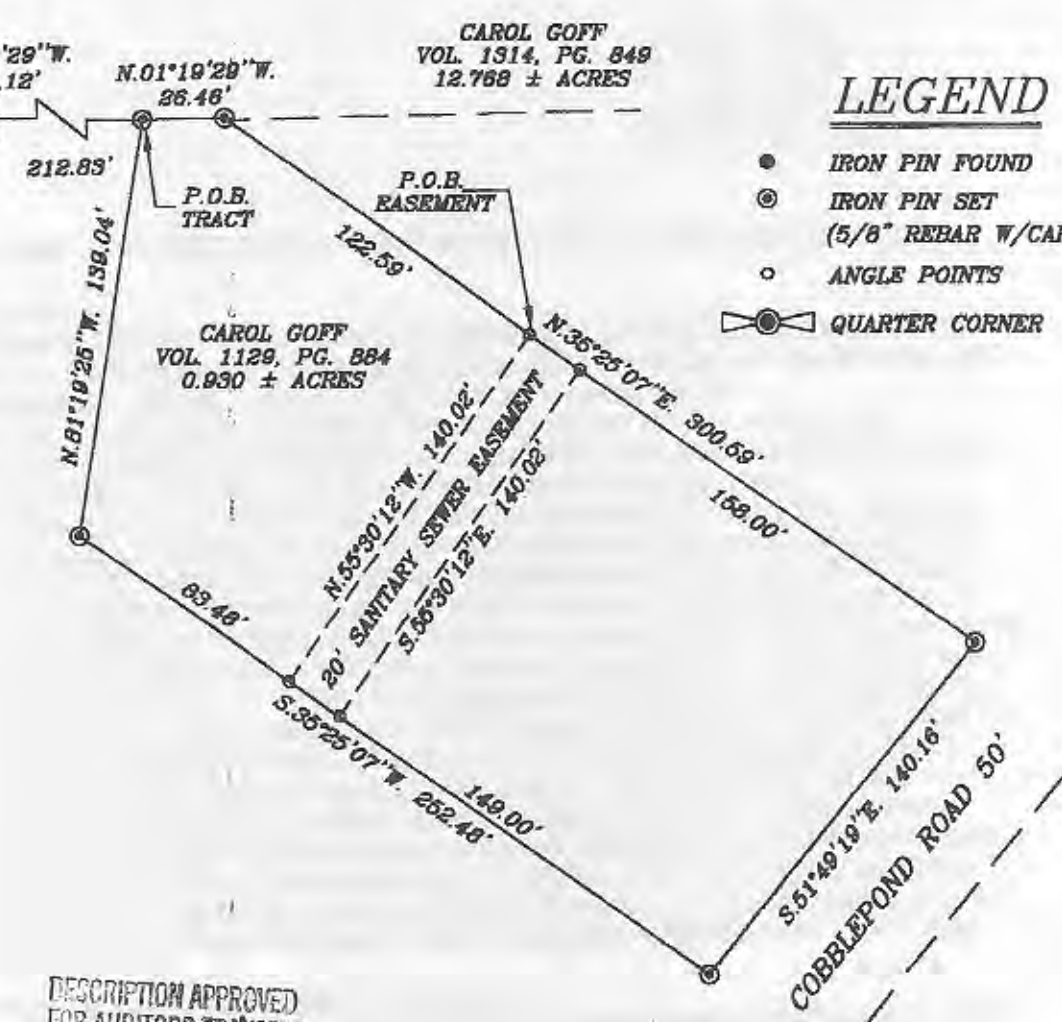
BEING A PART OF THE EAST HALF OF QUARTER TOWNSHIP 3,
TOWNSHIP 1, RANGE 6, OF THE UNITED STATES MILITARY LANDS,
PERRY TOWNSHIP, MUSKINGUM COUNTY, OHIO

BEARINGS ARE BASED ON THE EAST LINE OF THE PREVIOUS SURVEY
OF 12.768 ± ACRE TRACT AS SURVEYED BY W. J. BIEDENBACH
REG. SURVEYOR #5718 AND DATED JULY 11, 1986. (VOL. 982, PG. 271)

RESEARCH:

- PREVIOUS SURVEY OF 12.768 ± ACRES BY W.J. BIEDENBACH
PS 5718 (COMPLETED JULY 11, 1986)
- PREVIOUS SURVEY OF 88.563 ± ACRES (VOL. 787, PG. 194)
- PREVIOUS SURVEY FOR H. LIGHTHIZER (VOL. 975, PG. 207)
- PREVIOUS SURVEY OF 180.635 ± ACRES BY TCW (COMPLETED 12/2/96)

CENTER OF QUARTER TOWNSHIP 3
 N. 89°00'00" E. 1732.50' (DEED)
 S. 89°54'00" E. 163.04' (DEED)
 N. 88°41'02" E. 1319.16' (DEED)
 S. 89°54'00" E. 870.15' (DEED)
 N. 89°37'44" E. 1252.34' (DEED)



LEGEND

- IRON PIN FOUND
- ⊙ IRON PIN SET (5/8" REBAR W/CAP)
- ANGLE POINTS
- ⊕ QUARTER CORNER

DESCRIPTION APPROVED
FOR AUDITORS TRANSFER
BY: *[Signature]*
6-12-97

W.J. BIEDENBACH & ASSOC.
SURVEYING & MAPPING
ZANESVILLE, OHIO
(614) 453-4850

I HEREBY CERTIFY TO THE BEST OF MY
KNOWLEDGE AND BELIEF THE ABOVE PLAT AND
SURVEY TO BE CORRECT AS PREPARED BY ME,
THIS 20th DAY OF MAY, 1997.

W.J. BIEDENBACH
REGISTERED SURVEYOR #5718

OFFICE COPY
NOT RECORDABLE

DRAWN BY: AJS	DATE: 05-29-97
SCALE: 1"=60'	CHECKED BY: WJB
JOB NO: 4114	DRAWING NO: D:\4114\GOFF_13