

W.J. BIEDENBACH AND ASSOCIATES  
SURVEYING AND MAPPING  
3126 LISA LANE, ZANESVILLE, OHIO 43702  
(614) 453-4850

51-8003-02-004

600 BRANCH RD

DESCRIPTION FOR CONVEYANCE  
H. LIGHIZER  
TRACT "C"

BEING A PART OF THE EAST HALF OF QUARTER TOWNSHIP THREE, IN THE FIRST TOWNSHIP, SIXTH RANGE, OF THE UNITED STATES MILITARY LANDS, PERRY TOWNSHIP, MUSKINGUM COUNTY, OHIO AND FURTHER DESCRIBED AS FOLLOWS:

COMMENCING AT THE CENTER OF QUARTER TOWNSHIP THREE; THENCE EAST 1732.50 FEET (BY DEED) TO AN EXISTING IRON PIN (3/4 INCH I.D. PIPE); THENCE SOUTH 89 DEGREES 54 MINUTES 00 SECONDS EAST 163.04 FEET TO AN EXISTING IRON PIN (3/4 INCH I.D. PIPE); THENCE NORTH 89 DEGREES 41 MINUTES 02 SECONDS EAST 1319.16 FEET TO AN EXISTING IRON PIN (3/4 INCH I.D. PIPE); THENCE SOUTH 89 DEGREES 54 MINUTES 00 SECONDS EAST 670.15 FEET TO AN EXISTING IRON PIN (3/4 INCH I.D. PIPE); THENCE NORTH 89 DEGREES 37 MINUTES 44 SECONDS EAST 832.34 FEET TO AN IRON PIN SET, SAID IRON PIN BEING THE PLACE OF BEGINNING OF THIS TRACT; THENCE NORTH 01 DEGREE 19 MINUTES 29 SECONDS WEST 600.00 FEET TO AN IRON PIN SET; THENCE NORTH 89 DEGREES 37 MINUTES 44 SECONDS EAST 400.00 FEET TO AN IRON PIN SET; THENCE SOUTH 01 DEGREE 19 MINUTES 29 SECONDS EAST 600.00 FEET TO AN EXISTING IRON PIN (5/8 INCH REBAR); THENCE SOUTH 89 DEGREES 37 MINUTES 44 SECONDS WEST 400.00 FEET TO THE PLACE OF BEGINNING.

CONTAINING 5.509 MORE OR LESS ACRES, SUBJECT TO ALL APPLICABLE EASEMENTS.

ALSO THE FOLLOWING INGRESS AND EGRESS EASEMENT (50 FOOT ROADWAY)

BEING A PART OF THE EAST HALF OF QUARTER TOWNSHIP THREE, IN THE FIRST TOWNSHIP, 6TH RANGE, OF THE UNITED STATES MILITARY LANDS, PERRY TOWNSHIP, MUSKINGUM COUNTY, OHIO AND BEING FURTHER DESCRIBED AS FOLLOWS:

COMMENCING AT THE CENTER OF QUARTER TOWNSHIP 3; THENCE EAST 1732.50 FEET (BY DEED) TO AN EXISTING IRON PIN (3/4 INCH I.D. PIPE); THENCE SOUTH 89 DEGREES 54 MINUTES 00 SECONDS EAST 163.04 FEET TO AN EXISTING IRON PIN (3/4 INCH I.D. PIPE); THENCE NORTH 88 DEGREES 41 MINUTES 02 SECONDS EAST 1319.16 FEET TO AN EXISTING IRON PIN (3/4 INCH I.D. PIPE); THENCE SOUTH 89 DEGREES 54 MINUTES 00 SECONDS EAST 670.15 FEET TO AN EXISTING IRON PIN (3/4 INCH I.D. PIPE); THENCE NORTH 89 DEGREES 37 MINUTES 44 SECONDS EAST 300.00 FEET TO AN IRON PIN SET; THENCE NORTH 01 DEGREE 19 MINUTES 29 SECONDS WEST 600.00 FEET TO AN IRON PIN SET; THENCE NORTH 29 DEGREES 41 MINUTES 43 SECONDS EAST 34.99 FEET TO AN IRON PIN SET, SAID POINT BEING THE PLACE OF BEGINNING OF THIS EASEMENT; THENCE WITH A CURVE TO THE RIGHT HAVING A RADIUS OF 225.00 FEET (CHORD BEARING NORTH 47 DEGREES 00 MINUTES 20 SECONDS WEST 103.50 FEET) AN ARC DISTANCE OF 104.44 FEET TO AN IRON PIN SET; THENCE NORTH 33 DEGREES 42 MINUTES 30 SECONDS WEST 361.56 FEET TO AN IRON PIN SET, PASSING AN IRON PIN SET AT 167.37 FEET; THENCE WITH A CURVE TO THE RIGHT HAVING A RADIUS OF 225.00 FEET (CHORD BEARING NORTH 11 DEGREES 25 MINUTES 04 SECONDS WEST 170.69 FEET) AN ARC DISTANCE OF 175.07 FEET TO AN IRON PIN SET; THENCE NORTH 10 DEGREES 52 MINUTES 22 SECONDS EAST 665.96 FEET TO AN IRON PIN SET, PASSING AN EXISTING IRON PIN (3/4 INCH REBAR) AT 15.18 FEET; THENCE WITH A CURVE TO THE RIGHT HAVING A RADIUS OF 700.00 FEET (CHORD BEARING NORTH 19 DEGREES 56 MINUTES 49 SECONDS EAST 220.80 FEET) AN ARC DISTANCE OF 221.73 FEET TO AN IRON PIN SET; THENCE WITH A CURVE TO THE LEFT HAVING A RADIUS OF 679.42 FEET (CHORD BEARING NORTH 21 DEGREES 26 MINUTES 28 SECONDS EAST 179.24 FEET) AN ARC DISTANCE OF 179.76 FEET TO AN IRON PIN SET; THENCE WITH A CURVE TO THE RIGHT HAVING A RADIUS OF 333.05 FEET (CHORD BEARING NORTH 29 DEGREES 15 MINUTES 39 SECONDS EAST 176.88 FEET) AN ARC DISTANCE OF 179.03 FEET TO AN IRON PIN SET; THENCE NORTH 44 DEGREES 39 MINUTES 38 SECONDS EAST 92.13 FEET TO AN IRON PIN SET; THENCE WITH A CURVE TO THE LEFT HAVING A RADIUS OF 128.60 FEET (CHORD BEARING NORTH 01 DEGREE 56 MINUTES 56 SECONDS EAST 174.46 FEET) AN ARC DISTANCE OF 191.73 FEET TO AN IRON PIN SET; THENCE NORTH 40 DEGREES 45 MINUTES 53 SECONDS WEST 94.13 FEET TO AN IRON PIN SET; THENCE WITH A CURVE TO THE RIGHT HAVING A RADIUS OF 260.00 FEET (CHORD BEARING NORTH 20 DEGREES 27 MINUTES 03 SECONDS WEST 180.51 FEET) AN ARC DISTANCE OF 184.35 FEET TO AN IRON PIN SET.

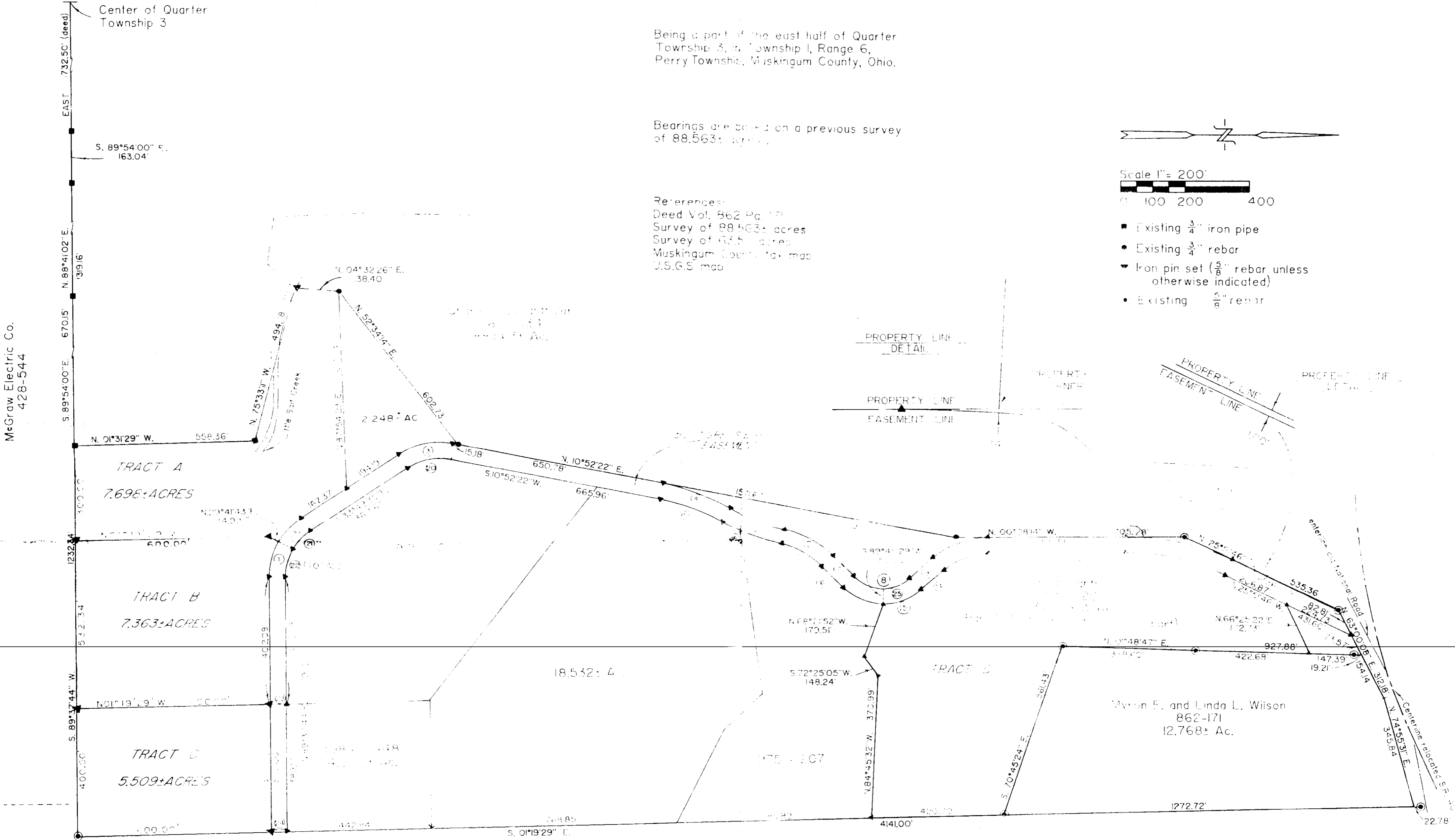
THENCE NORTH 00 DEGREES 08 MINUTES 14 SECONDS WEST 425.19 FEET TO AN IRON PIN SET; THENCE WITH A CURVE TO THE RIGHT HAVING A RADIUS OF 750.00 FEET (CHORD BEARING NORTH 12 DEGREES 51 MINUTES 47 SECONDS EAST 337.42 FEET) AN ARC DISTANCE OF 340.34 FEET TO AN IRON PIN SET; THENCE NORTH 25 DEGREES 51 MINUTES 46 SECONDS EAST 365.58 FEET TO AN IRON PIN SET; THENCE NORTH 63 DEGREES 00 MINUTES 08 SECONDS EAST 82.81 FEET TO AN IRON PIN SET; THENCE SOUTH 25 DEGREES 51 MINUTES 46 SECONDS WEST 431.60 FEET TO AN IRON PIN SET; THENCE WITH A CURVE TO THE LEFT HAVING A RADIUS OF 700.00 FEET (CHORD BEARING SOUTH 12 DEGREES 51 MINUTES 47 SECONDS WEST 314.93 FEET) AN ARC DISTANCE OF 317.65 FEET TO AN IRON PIN SET; THENCE SOUTH 00 DEGREES 08 MINUTES 14 SECONDS EAST 425.19 FEET TO AN IRON PIN SET; THENCE WITH A CURVE TO THE LEFT HAVING A RADIUS OF 210.00 FEET (CHORD BEARING SOUTH 20 DEGREES 27 MINUTES 03 SECONDS EAST 145.80 FEET) AN ARC DISTANCE OF 148.90 FEET TO AN IRON PIN SET; THENCE SOUTH 40 DEGREES 45 MINUTES 53 SECONDS EAST 94.13 FEET TO AN IRON PIN SET; THENCE WITH A CURVE TO THE RIGHT HAVING A RADIUS OF 178.60 FEET (CHORD BEARING SOUTH 01 DEGREE 56 MINUTES 56 SECONDS WEST 242.29 FEET ) AN ARC DISTANCE OF 266.28 FEET TO AN IRON PIN SET; THENCE SOUTH 44 DEGREES 39 MINUTES 38 SECONDS EAST 92.13 FEET TO AN IRON PIN SET; THENCE WITH A CURVE TO THE LEFT HAVING A RADIUS OF 283.05 FEET (CHORD BEARING SOUTH 29 DEGREES 15 MINUTES 39 SECONDS WEST 150.33 FEET) AN ARC DISTANCE OF 152.16 FEET TO AN IRON PIN SET; THENCE WITH A CURVE TO THE RIGHT HAVING A RADIUS OF 729.42 FEET (CHORD BEARING SOUTH 21 DEGREES 26 MINUTES 28 SECONDS WEST 192.43 FEET) AN ARC DISTANCE OF 192.99 FEET TO AN IRON PIN SET; THENCE WITH A CURVE TO THE LEFT HAVING A RADIUS OF 650.00 FEET (CHORD BEARING SOUTH 19 DEGREES 56 MINUTES 49 SECONDS WEST 295.02 FEET) AN ARC DISTANCE OF 205.88 FEET TO AN IRON PIN SET; THENCE SOUTH 10 DEGREES 52 MINUTES 22 SECONDS WEST 665.96 FEET TO A POINT; THENCE WITH A CURVE TO THE LEFT HAVING A RADIUS OF 175.00 FEET (CHORD BEARING SOUTH 11 DEGREES 25 MINUTES 04 SECONDS EAST 132.76 FEET) AN ARC DISTANCE OF 136.17 FEET TO AN IRON PIN SET; THENCE SOUTH 33 DEGREES 42 MINUTES 30 SECONDS EAST 361.56 FEET TO AN IRON PIN SET; THENCE WITH A CURVE TO THE LEFT HAVING A RADIUS OF 175.00 FEET (CHORD BEARING SOUTH 62 DEGREES 02 MINUTES 23 SECONDS EAST 166.10 FEET) AN ARC DISTANCE OF 173.07 FEET TO AN IRON PIN SET; THENCE NORTH 89 DEGREES 37 MINUTES 44 SECONDS EAST 801.25 FEET TO AN IRON PIN SET, PASSING AN IRON PIN SET AT 402.08 FEET; THENCE SOUTH 01 DEGREES 19 MINUTES 29 SECONDS EAST 50.01 FEET TO AN IRON PIN SET; THENCE SOUTH 89 DEGREES 37 MINUTES 44 SECONDS WEST 802.08 FEET TO AN IRON PIN SET, PASSING AN IRON PIN SET AT 400.00 FEET; THENCE WITH A CURVE TO THE RIGHT HAVING A RADIUS OF 225.00 FEET (CHORD BEARING NORTH 75 DEGREES 20 MINUTES 12 SECONDS WEST 116.73 FEET) AN ARC DISTANCE OF 118.08 FEET TO THE PLACE OF BEGINNING.

BEARINGS ARE BASED ON THE PREVIOUS SURVEY OF 88,563 MORE OR LESS ACRE TRACT BY W. J. BIEDENBACH AND ASSOCIATES DATED DECEMBER 19, 1980. ALL IRON PINS SET ARE 5/8 INCH X 30 INCH REBAR WITH PLASTIC IDENTIFICATION CAPS.

I HEREBY CERTIFY TO THE BEST OF MY KNOWLEDGE AND BELIEF THIS SURVEY DESCRIPTION TO BE CORRECT AS SURVEYED BY ME, THIS 8TH DAY OF SEPTEMBER, 1987.

W. J. BIEDENBACH  
REGISTERED SURVEYOR #5718

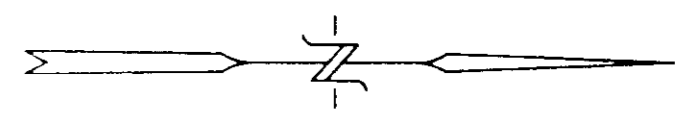
D2700C H. LIGHTHIZER



Being a part of the east half of Quarter Township 3, Township 1, Range 6, Perry Township, Muskingum County, Ohio.

Bearings are based on a previous survey of 88.563± acres.

References:  
Deed Vol. 862 Pg. 171  
Survey of 88.563± acres  
Survey of 88.5± acres  
Muskingum County Tax map  
U.S.G.S. map



Scale 1" = 200'  
0 100 200 400

- ▣ Existing 3/4" iron pipe
- Existing 3/4" rebar
- ▼ Iron pin set (5/8" rebar unless otherwise indicated)
- Existing 5/8" rebar

McGraw Electric Co.  
428-544

EAST 732.50' (dead)  
S. 89°54'00" E. 163.04'  
N. 88°41'02" E. 319.16'  
S. 89°54'00" E. 670.15'  
N. 01°31'29" W. 558.36'  
N. 01°11'29" W. 600.00'  
S. 89°54'00" E. 400.00'  
S. 89°54'00" E. 400.00'  
S. 89°54'00" E. 400.00'

TRACT A  
7.698± ACRES

TRACT B  
7.363± ACRES

TRACT C  
5.509± ACRES

Myron E. and Linda L. Wilson  
862-171  
12.768± Ac.

- 1--CH. N. 75°20' W. 106.73' ARC 118.19° RADIUS 225.00'
- 2--CH. N. 47°00' 20" W. 137.50' ARC 1104.44° RADIUS 225.00'
- 3--CH. N. 11°25' 04" W. 170.69' ARC 1175.07° RADIUS 225.00'
- 4--CH. N. 8°16' 11" E. 201.80' ARC 1111.14° RADIUS 225.00'
- 5--CH. N. 21°28' 15" E. 183.17' ARC 1121.81° RADIUS 225.00'
- 6--CH. N. 29°10' 39" E. 176.99' ARC 1131.41° RADIUS 225.00'
- 7--N. 44°30' 49" E. 192.00'
- 8--CH. N. 01°56' 14" E. 174.46' ARC 1111.14° RADIUS 225.00'
- 9--N. 40°45' 53" W. 94.12'
- 10--CH. N. 20°12' 03" W. 180.50' ARC 1184.25° RADIUS 225.00'
- 11--CH. N. 1°51' 47" E. 337.42' ARC 1111.14° RADIUS 225.00'
- 12--CH. S. 00°54' 47" W. 34.94' ARC 1111.14° RADIUS 225.00'

I hereby certify to the best of my knowledge and belief the above plot and survey to be correct as surveyed by me, this 4th day of September 1987

*W. J. Biedenbach*  
W. J. Biedenbach  
Reg. Surveyor #5718

- 13--CH. S. 70°45' 24" E. 361.43'
- 14--CH. S. 70°45' 24" E. 361.43' RADIUS 178.60'
- 15--CH. S. 70°45' 24" E. 361.43' RADIUS 178.60'
- 16--CH. S. 70°45' 24" E. 361.43' RADIUS 178.60'
- 17--CH. S. 70°45' 24" E. 361.43' RADIUS 178.60'
- 18--CH. S. 70°45' 24" E. 361.43' RADIUS 178.60'
- 19--CH. S. 70°45' 24" E. 361.43' RADIUS 178.60'
- 20--CH. S. 70°45' 24" E. 361.43' RADIUS 178.60'
- 21--CH. S. 70°45' 24" E. 361.43' RADIUS 178.60'
- 22--CH. S. 70°45' 24" E. 361.43' RADIUS 178.60'
- 23--CH. S. 70°45' 24" E. 361.43' RADIUS 178.60'
- 24--CH. S. 70°45' 24" E. 361.43' RADIUS 178.60'
- 25--CH. S. 70°45' 24" E. 361.43' RADIUS 178.60'
- 26--CH. S. 70°45' 24" E. 361.43' RADIUS 178.60'
- 27--CH. S. 70°45' 24" E. 361.43' RADIUS 178.60'
- 28--CH. S. 70°45' 24" E. 361.43' RADIUS 178.60'
- 29--CH. S. 70°45' 24" E. 361.43' RADIUS 178.60'
- 30--CH. S. 70°45' 24" E. 361.43' RADIUS 178.60'
- 31--CH. S. 70°45' 24" E. 361.43' RADIUS 178.60'
- 32--CH. S. 70°45' 24" E. 361.43' RADIUS 178.60'
- 33--CH. S. 70°45' 24" E. 361.43' RADIUS 178.60'
- 34--CH. S. 70°45' 24" E. 361.43' RADIUS 178.60'
- 35--CH. S. 70°45' 24" E. 361.43' RADIUS 178.60'
- 36--CH. S. 70°45' 24" E. 361.43' RADIUS 178.60'
- 37--CH. S. 70°45' 24" E. 361.43' RADIUS 178.60'
- 38--CH. S. 70°45' 24" E. 361.43' RADIUS 178.60'
- 39--CH. S. 70°45' 24" E. 361.43' RADIUS 178.60'
- 40--CH. S. 70°45' 24" E. 361.43' RADIUS 178.60'
- 41--CH. S. 70°45' 24" E. 361.43' RADIUS 178.60'
- 42--CH. S. 70°45' 24" E. 361.43' RADIUS 178.60'
- 43--CH. S. 70°45' 24" E. 361.43' RADIUS 178.60'
- 44--CH. S. 70°45' 24" E. 361.43' RADIUS 178.60'
- 45--CH. S. 70°45' 24" E. 361.43' RADIUS 178.60'
- 46--CH. S. 70°45' 24" E. 361.43' RADIUS 178.60'
- 47--CH. S. 70°45' 24" E. 361.43' RADIUS 178.60'
- 48--CH. S. 70°45' 24" E. 361.43' RADIUS 178.60'
- 49--CH. S. 70°45' 24" E. 361.43' RADIUS 178.60'
- 50--CH. S. 70°45' 24" E. 361.43' RADIUS 178.60'
- 51--CH. S. 70°45' 24" E. 361.43' RADIUS 178.60'
- 52--CH. S. 70°45' 24" E. 361.43' RADIUS 178.60'
- 53--CH. S. 70°45' 24" E. 361.43' RADIUS 178.60'
- 54--CH. S. 70°45' 24" E. 361.43' RADIUS 178.60'
- 55--CH. S. 70°45' 24" E. 361.43' RADIUS 178.60'
- 56--CH. S. 70°45' 24" E. 361.43' RADIUS 178.60'
- 57--CH. S. 70°45' 24" E. 361.43' RADIUS 178.60'
- 58--CH. S. 70°45' 24" E. 361.43' RADIUS 178.60'
- 59--CH. S. 70°45' 24" E. 361.43' RADIUS 178.60'
- 60--CH. S. 70°45' 24" E. 361.43' RADIUS 178.60'
- 61--CH. S. 70°45' 24" E. 361.43' RADIUS 178.60'
- 62--CH. S. 70°45' 24" E. 361.43' RADIUS 178.60'
- 63--CH. S. 70°45' 24" E. 361.43' RADIUS 178.60'
- 64--CH. S. 70°45' 24" E. 361.43' RADIUS 178.60'
- 65--CH. S. 70°45' 24" E. 361.43' RADIUS 178.60'
- 66--CH. S. 70°45' 24" E. 361.43' RADIUS 178.60'
- 67--CH. S. 70°45' 24" E. 361.43' RADIUS 178.60'
- 68--CH. S. 70°45' 24" E. 361.43' RADIUS 178.60'
- 69--CH. S. 70°45' 24" E. 361.43' RADIUS 178.60'
- 70--CH. S. 70°45' 24" E. 361.43' RADIUS 178.60'
- 71--CH. S. 70°45' 24" E. 361.43' RADIUS 178.60'
- 72--CH. S. 70°45' 24" E. 361.43' RADIUS 178.60'
- 73--CH. S. 70°45' 24" E. 361.43' RADIUS 178.60'
- 74--CH. S. 70°45' 24" E. 361.43' RADIUS 178.60'
- 75--CH. S. 70°45' 24" E. 361.43' RADIUS 178.60'
- 76--CH. S. 70°45' 24" E. 361.43' RADIUS 178.60'
- 77--CH. S. 70°45' 24" E. 361.43' RADIUS 178.60'
- 78--CH. S. 70°45' 24" E. 361.43' RADIUS 178.60'
- 79--CH. S. 70°45' 24" E. 361.43' RADIUS 178.60'
- 80--CH. S. 70°45' 24" E. 361.43' RADIUS 178.60'
- 81--CH. S. 70°45' 24" E. 361.43' RADIUS 178.60'
- 82--CH. S. 70°45' 24" E. 361.43' RADIUS 178.60'
- 83--CH. S. 70°45' 24" E. 361.43' RADIUS 178.60'
- 84--CH. S. 70°45' 24" E. 361.43' RADIUS 178.60'
- 85--CH. S. 70°45' 24" E. 361.43' RADIUS 178.60'
- 86--CH. S. 70°45' 24" E. 361.43' RADIUS 178.60'
- 87--CH. S. 70°45' 24" E. 361.43' RADIUS 178.60'
- 88--CH. S. 70°45' 24" E. 361.43' RADIUS 178.60'
- 89--CH. S. 70°45' 24" E. 361.43' RADIUS 178.60'
- 90--CH. S. 70°45' 24" E. 361.43' RADIUS 178.60'
- 91--CH. S. 70°45' 24" E. 361.43' RADIUS 178.60'
- 92--CH. S. 70°45' 24" E. 361.43' RADIUS 178.60'
- 93--CH. S. 70°45' 24" E. 361.43' RADIUS 178.60'
- 94--CH. S. 70°45' 24" E. 361.43' RADIUS 178.60'
- 95--CH. S. 70°45' 24" E. 361.43' RADIUS 178.60'
- 96--CH. S. 70°45' 24" E. 361.43' RADIUS 178.60'
- 97--CH. S. 70°45' 24" E. 361.43' RADIUS 178.60'
- 98--CH. S. 70°45' 24" E. 361.43' RADIUS 178.60'
- 99--CH. S. 70°45' 24" E. 361.43' RADIUS 178.60'
- 100--CH. S. 70°45' 24" E. 361.43' RADIUS 178.60'

DESCRIPTION APPROVED FOR AUDITOR'S TRANSFER  
BY *J. J. Hambl*

W. J. BIEDENBACH & ASSOCIATES  
SURVEYING & MAPPING  
ZANESVILLE, OHIO  
(614) 453-4850  
Drawn by: AB Date: 11/13/87