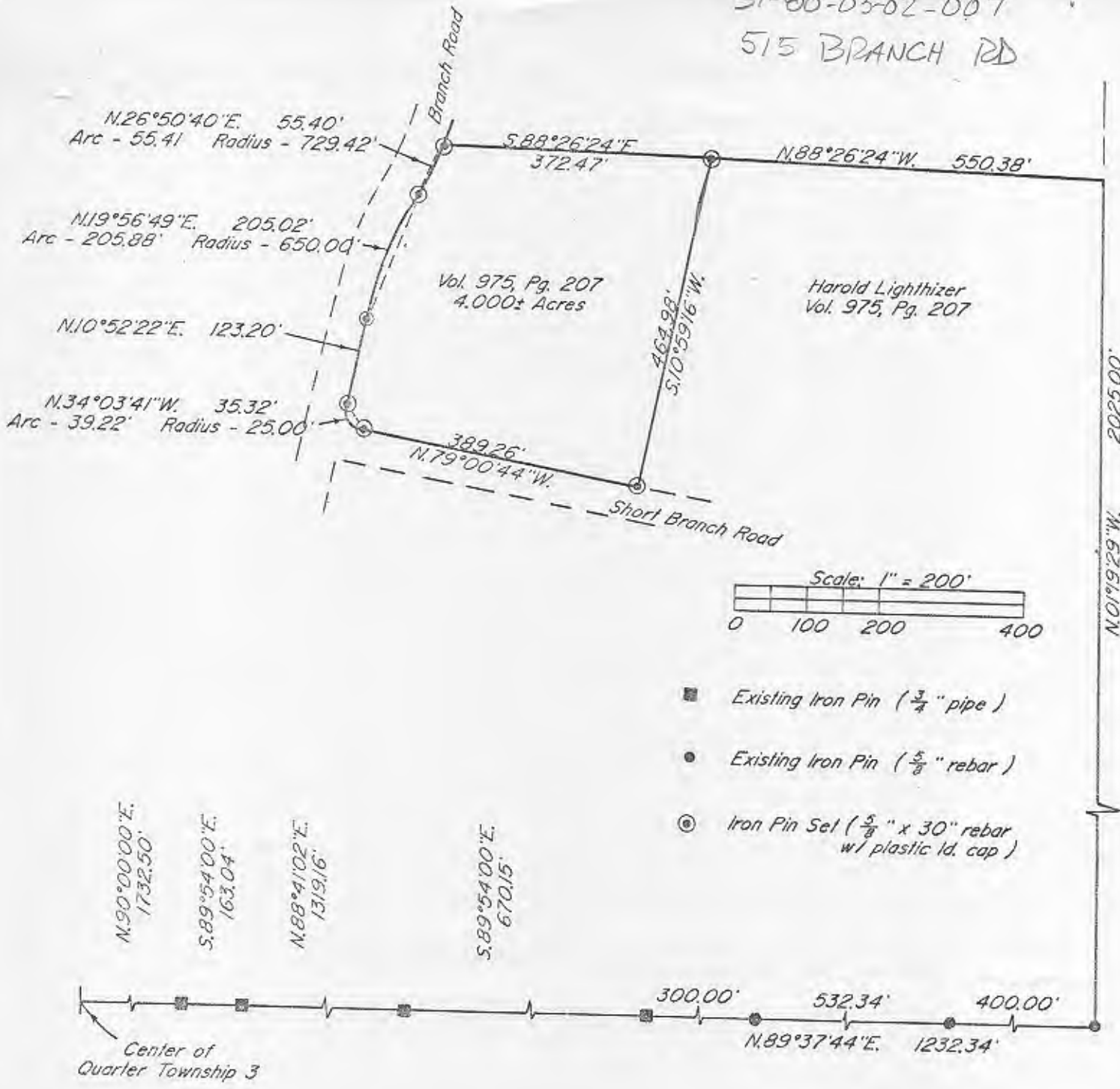


51-80-03-02-007
515 BRANCH RD



Bearings are based on the Previous Survey of 88,563± Ac.

Research

Vol. 862 Pg. 171
Vol. 975 Pg. 207
Vol. 767 Pg. 134
Muskingum County Tax Map

Being a part of the East Half of Quarter Township 3,
Township 1, Range 6, of the United States Military Lands,
Perry Township, Muskingum County, Ohio.

DESCRIPTION APPROVED
FOR AUDITOR'S TRANSFER

BY J. L. Tramble
8-16-88

I hereby certify to the best of my knowledge and
belief the above plat and survey to be correct as prepared
by me, this 16th day of April 1988.

OFFICE COPY
NOT RECORDABLE

W. J. BIEDENBACH
Reg. Surveyor #5718

STATE OF OHIO
W. J. BIEDENBACH
5718
REGISTERED
SURVEYOR

Par. N° 51-51-80-03-02-001 (part)

W. J. BIEDENBACH & ASSOC. SURVEYING & MAPPING ZANESVILLE, OHIO (614) 453-4850	
Drawn by: SDD	Date: 4-18-88
Scale: 1" = 200'	Checked by: JD
Job N°: 2811	H. Lighthizer