

SURVEY FOR CENTURY 21

AUDITORS PARCEL NUMBER

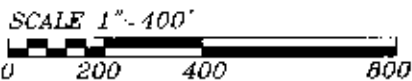
51-51-40-12 54-000 (ALL) 39.021 ± ACRES
 51-51 40-12-53-000 (ALL) - 10.736 ± ACRES
 51-51 80-19-04-000 (ALL) - 3.738 ± ACRES

BEING A PART OF THE NORTHWEST QUARTER OF SECTION 19 AND THE
 SOUTHWEST AND THE SOUTHEAST QUARTER OF SECTION 12, TOWNSHIP 1,
 RANGE 6, OF THE UNITED STATES MILITARY LANDS, PERRY TOWNSHIP,
 MUSKINGUM COUNTY, OHIO.

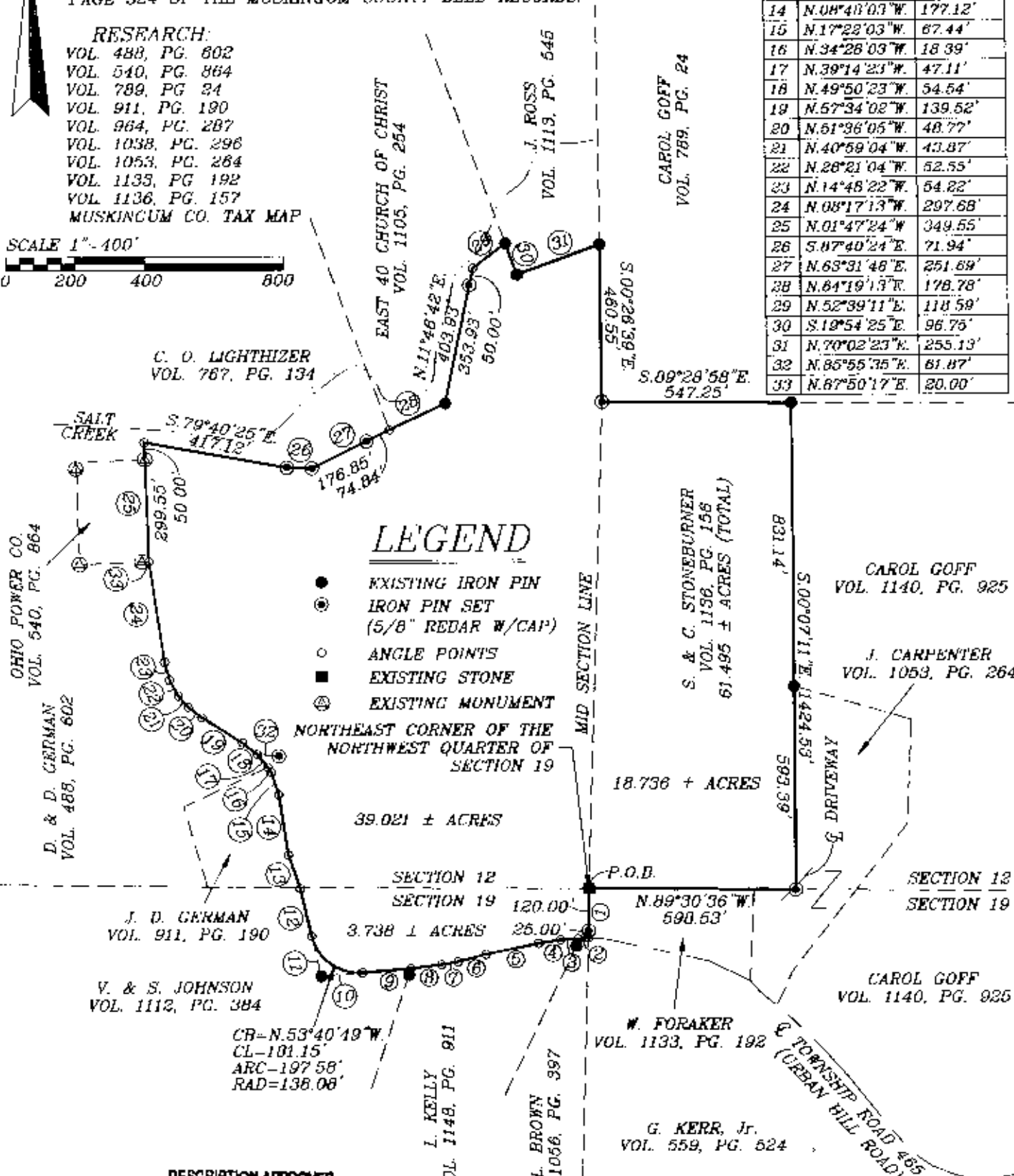
BEARINGS ARE BASED ON THE NORTH LINE OF THE 29.15 ACRE TRACT
 CONVEYED TO GEORGE A. KERR, JR. BY DEED RECORDED IN VOLUME 559,
 PAGE 524 OF THE MUSKINGUM COUNTY DEED RECORDS.

RESEARCH:

VOL. 488, PG. 802
 VOL. 540, PG. 864
 VOL. 789, PG. 24
 VOL. 911, PG. 190
 VOL. 964, PG. 287
 VOL. 1038, PG. 296
 VOL. 1053, PG. 284
 VOL. 1133, PG. 192
 VOL. 1136, PG. 157
 MUSKINGUM CO. TAX MAP



LINE DATA		
No.	BEARING	DISTANCE
1	S. 00°44'37\"W.	145.00'
2	S. 86°26'17\"W.	30.00'
3	S. 06°26'17\"W.	50.38'
4	S. 80°41'27\"W.	65.18'
5	S. 70°13'37\"W.	155.47'
6	S. 75°05'17\"W.	83.71'
7	S. 79°40'47\"W.	48.34'
8	S. 03°06'37\"W.	89.76'
9	S. 85°19'37\"W.	140.30'
10	S. 85°19'37\"W.	120.00'
11	N. 12°41'16\"W.	120.00'
12	N. 12°41'16\"W.	142.99'
13	N. 16°30'03\"W.	105.85'
14	N. 08°48'03\"W.	177.12'
15	N. 17°22'03\"W.	87.44'
16	N. 34°28'03\"W.	18.39'
17	N. 39°14'23\"W.	47.11'
18	N. 49°50'23\"W.	54.54'
19	N. 57°34'02\"W.	139.52'
20	N. 51°36'05\"W.	48.77'
21	N. 40°59'04\"W.	43.87'
22	N. 28°21'04\"W.	52.55'
23	N. 14°48'22\"W.	54.22'
24	N. 08°17'13\"W.	297.68'
25	N. 01°47'24\"W.	349.55'
26	S. 07°40'24\"E.	71.94'
27	N. 63°31'48\"E.	251.89'
28	N. 84°19'13\"E.	178.78'
29	N. 52°39'11\"E.	118.59'
30	S. 19°54'25\"E.	96.75'
31	N. 70°02'23\"E.	255.13'
32	N. 85°55'35\"E.	61.87'
33	N. 87°50'17\"E.	20.00'



LEGEND

- EXISTING IRON PIN
- ⊙ IRON PIN SET (5/8" REDAR W/CAP)
- ANGLE POINTS
- EXISTING STONE
- ⊕ EXISTING MONUMENT

NORTHEAST CORNER OF THE
 NORTHWEST QUARTER OF
 SECTION 19

39.021 ± ACRES

SECTION 12
 SECTION 19
 3.738 ± ACRES

18.736 ± ACRES

W. FORAKER
 VOL. 1133, PG. 192

CAROL GOFF
 VOL. 1140, PG. 925

J. CARPENTER
 VOL. 1053, PG. 264

CAROL GOFF
 VOL. 1140, PG. 925

G. KERR, Jr.
 VOL. 559, PG. 524

DESCRIPTION APPROVED
 FOR AUDITOR'S TRANSFER
 BY *[Signature]*
 1-13-2005

I HEREDY CERTIFY TO THE BEST OF MY
 KNOWLEDGE AND BELIEF THE ABOVE PLAT AND
 SURVEY TO BE CORRECT AS DRAWN BY ME,
 THIS 9th DAY OF JANUARY, 2005.

OFFICE COPY
 NOT RECORDABLE

MICHAEL D. GARDNER
 REGISTERED SURVEYOR #6923

BIEDENDACH ENGINEERING, INC.
 ZANESVILLE, OHIO
 (740) 453-4850

DRAWN BY: AJS	DATE: 01-09-03
SCALE: 1"=400'	CHECKED BY: MDN
JOB NO: 4903	DRAWING NO: D:\4903\1903