

W. J. Biedenbach & Associates

SURVEYING & MAPPING  
3120 LISA LANE  
ZANESVILLE, OHIO 43701  
614 453-4850

51-80-23-11-002

145E SPRY RD

Part of a 131.859 Acre tract recorded in Volume 767 page 134 of the Muskingum County Deed Records in the South East Quarter of Section 23, Township 1, Range 6, of the United States Military Lands, Perry Township, Muskingum County, Ohio and being further described as follows:

Commencing at an existing stone marking the South East Corner of Lot number 23; thence North 00 degrees 47 minutes 17 seconds West 990.00 feet to a point in the center of County Road number 5 Spry Road; thence following the center of County Road number 5 (Spry Road) the next eight courses and distances:

1. North 45 degrees 37 minutes 46 seconds West 15.17 feet to a point;
2. North 31 degrees 35 minutes 18 seconds West 92.96 feet to a point;
3. North 14 degrees 37 minutes 33 seconds West 92.86 feet to a point;
4. North 07 degrees 26 minutes 12 seconds West 107.33 feet to a point;
5. North 11 degrees 47 minutes 42 seconds West 97.25 feet to a point;
6. North 20 degrees 50 minutes 03 seconds West 111.16 feet to a point;
7. North 23 degrees 48 minutes 23 seconds West 107.52 feet to a point;
8. North 32 degrees 10 minutes 55 seconds West 36.13 feet to a point,

said point being the place of beginning of this tract; thence leaving said County Road number 5 (Spry Road) South 60 degrees 34 minutes 46 seconds West 589.96 feet to a point marked by an iron pin (5/8 inch rebar), passing a point marked by an iron pin (5/8 inch rebar) 17.58 feet; thence North 18 degrees 39 minutes 09 seconds West 301.66 feet to a point marked by an iron pin (5/8 inch rebar); thence North 08 degrees 59 minutes 13 seconds West 346.29 feet to a point in the center of County Road number 5 (Spry Road), passing a point marked by an iron pin (5/8 inch rebar) at 319.21 feet; thence following the center of County Road number 5 the next six courses and distances:

1. South 68 degrees 42 minutes 34 seconds East 349.43 feet to a point;
2. South 66 degrees 48 minutes 20 seconds East 117.63 feet to a point;
3. South 65 degrees 08 minutes 34 seconds East 91.67 feet to a point;
4. South 59 degrees 55 minutes 29 seconds East 88.19 feet to a point;
5. South 50 degrees 22 minutes 31 seconds East 53.05 feet to a point;
6. South 32 degrees 10 minutes 55 seconds East 57.04 feet to a point to the place of beginning.

Containing 4.885 acres more or less, subject to all legal road right-of-way.

I hereby certify the above description to be correct as prepared by me, this 2nd day of May 1985.

~~OFFICE COPY~~  
~~NOT RECORDABLE~~  
W. J. BIEDENBACH  
REG. SURVEYOR #5718

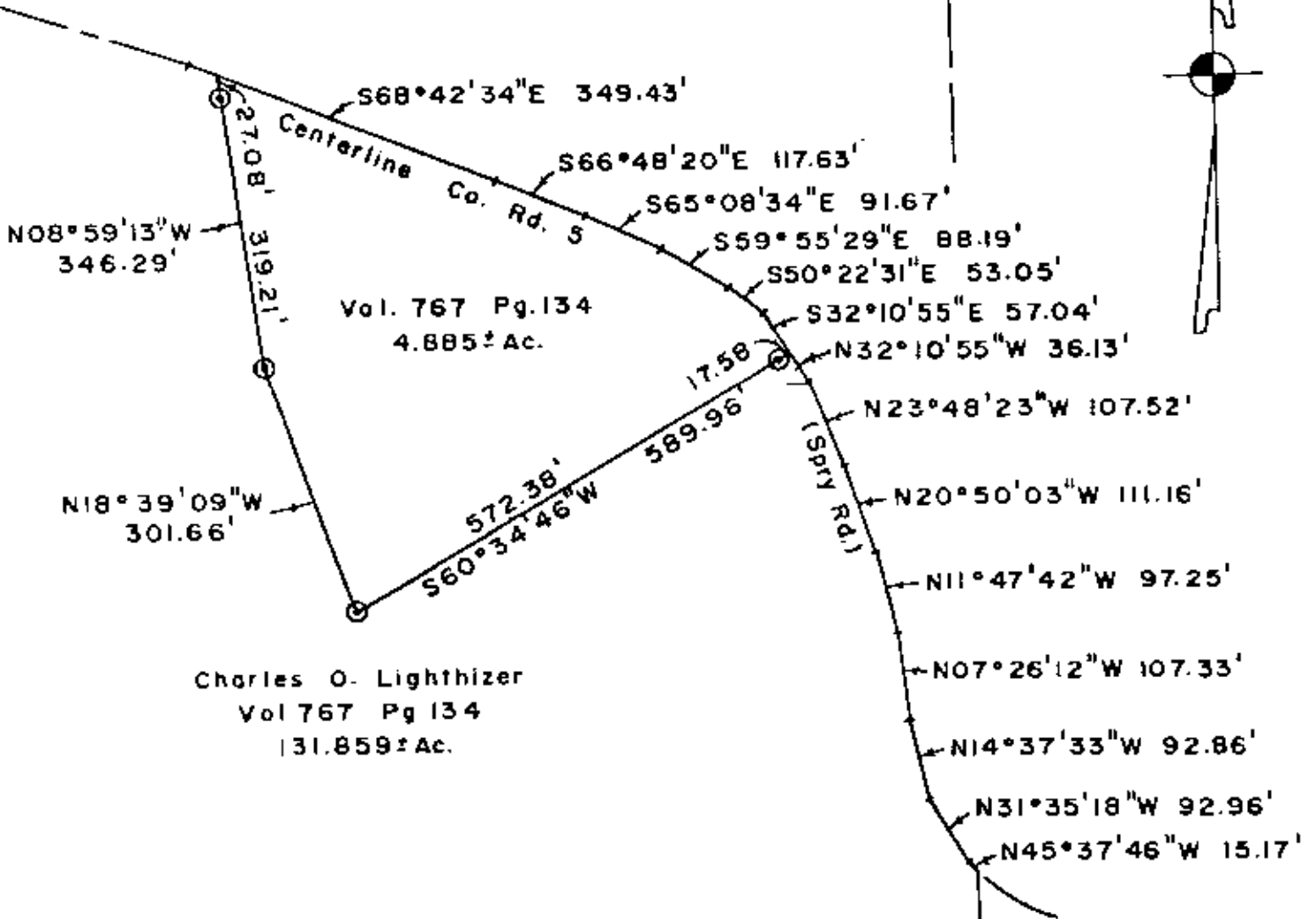


2155 C.O. Lighthizer

OK VAD  
7-29-85

Vol. 767 Pg. 134  
24.030 ± Ac.

△ ~ Existing Stone  
⊙ ~ Iron Pin Set  
(5/8" rebar)



N08°59'13"W  
346.29'

Vol. 767 Pg. 134  
4.885 ± Ac.

N18°39'09"W  
301.66'

Charles O. Lighthizer  
Vol. 767 Pg. 134  
131.859 ± Ac.

Being a part of the Southeast Quarter of Section 23, Township 1, Range 6, of the United States Military Lands, Perry Township, Muskingum County, Ohio.

Bearings are based on the previous survey in the Southeast Quarter of Section 23 (131.859 ± Ac.)

I hereby certify the above plat and survey to be correct as prepared by me this 30th day of April 1985.

**OFFICE COPY NOT RECORDABLE**  
W. J. Biedenbach  
Reg. Surveyor 5718



**W. J. BIEDENBACH & ASSOC.**  
Surveying & Mapping  
3120 Lisa Ln. Zanesville, Ohio 43701  
(614) 453-4850

Drawn by SD	Date 4/30/85
Scale 1" = 200'	Checked by SP
Job No 2155	C.O. LIGHTHIZER