



Terry J. Finley Surveying & Mapping

Ohio Registered Surveyor #S-7222

LEGAL DESCRIPTION FOR GEORGE BUCHANAN

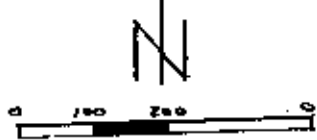
SITUATED IN THE STATE OF OHIO, COUNTY OF MUSKINGUM, TOWNSHIP OF RICH HILL, AND BEING PART OF THE SOUTHWEST QUARTER OF SECTION 8, TOWNSHIP 13, RANGE 11, AND BEING PART OF THOSE LANDS DESCRIBED IN DEED VOLUME 1080, PAGE 436; BEING FURTHER BOUNDED AND DESCRIBED AS FOLLOWS:

BEGINNING AT AN IRON PIN SET AT THE SOUTHEAST CORNER OF THE SOUTHWEST QUARTER OF SECTION 8, THENCE, ALONG THE SOUTH LINE THEREOF, NORTH 86 DEGREES - 47 MINUTES - 05 SECONDS WEST, 2034.12 FEET TO AN IRON PIN SET, PASSING AN IRON PIN FOUND AT 1500.20 FEET; THENCE, NORTH 25 DEGREES - 25 MINUTES - 11 SECONDS EAST, 1260.43 FEET TO AN IRON PIN SET ON THE SOUTH LINE OF THOSE LANDS DESCRIBED IN DEED VOLUME 1057, PAGE 186; THENCE, SOUTH 87 DEGREES - 27 MINUTES - 41 SECONDS EAST, 227.69 FEET TO AN IRON PIN SET; THENCE, NORTH 03 DEGREES - 32 MINUTES - 10 SECONDS EAST, 363.00 FEET TO AN IRON PIN SET; THENCE, NORTH 16 DEGREES - 22 MINUTES - 39 SECONDS EAST, 167.76 FEET TO AN IRON PIN SET; THENCE, SOUTH 73 DEGREES - 37 MINUTES - 21 SECONDS EAST, 150.00 FEET TO AN IRON PIN SET; THENCE, NORTH 16 DEGREES - 22 MINUTES - 39 SECONDS EAST, 253.88 FEET TO AN IRON PIN SET; THENCE, NORTH 73 DEGREES - 37 MINUTES - 21 SECONDS WEST, 150.00 FEET TO AN IRON PIN SET; THENCE, NORTH 16 DEGREES - 22 MINUTES - 39 SECONDS EAST, 110.03 FEET TO AN IRON PIN SET; THENCE, SOUTH 88 DEGREES - 37 MINUTES - 21 SECONDS EAST, 150.00 FEET TO AN IRON PIN SET AT THE SOUTHEASTERLY CORNER OF THOSE LANDS DESCRIBED IN DEED VOLUME 557, PAGE 670; THENCE, NORTH 17 DEGREES - 18 MINUTES - 52 SECONDS EAST, 288.14 FEET TO A POINT IN THE CENTER OF STATE ROUTE 313, PASSING AN IRON PIN SET AT 258.14 FEET; THENCE, ALONG THE CENTERLINE OF SAID STATE ROUTE, THE FOLLOWING FOURTEEN (14) COURSES AND DISTANCES:

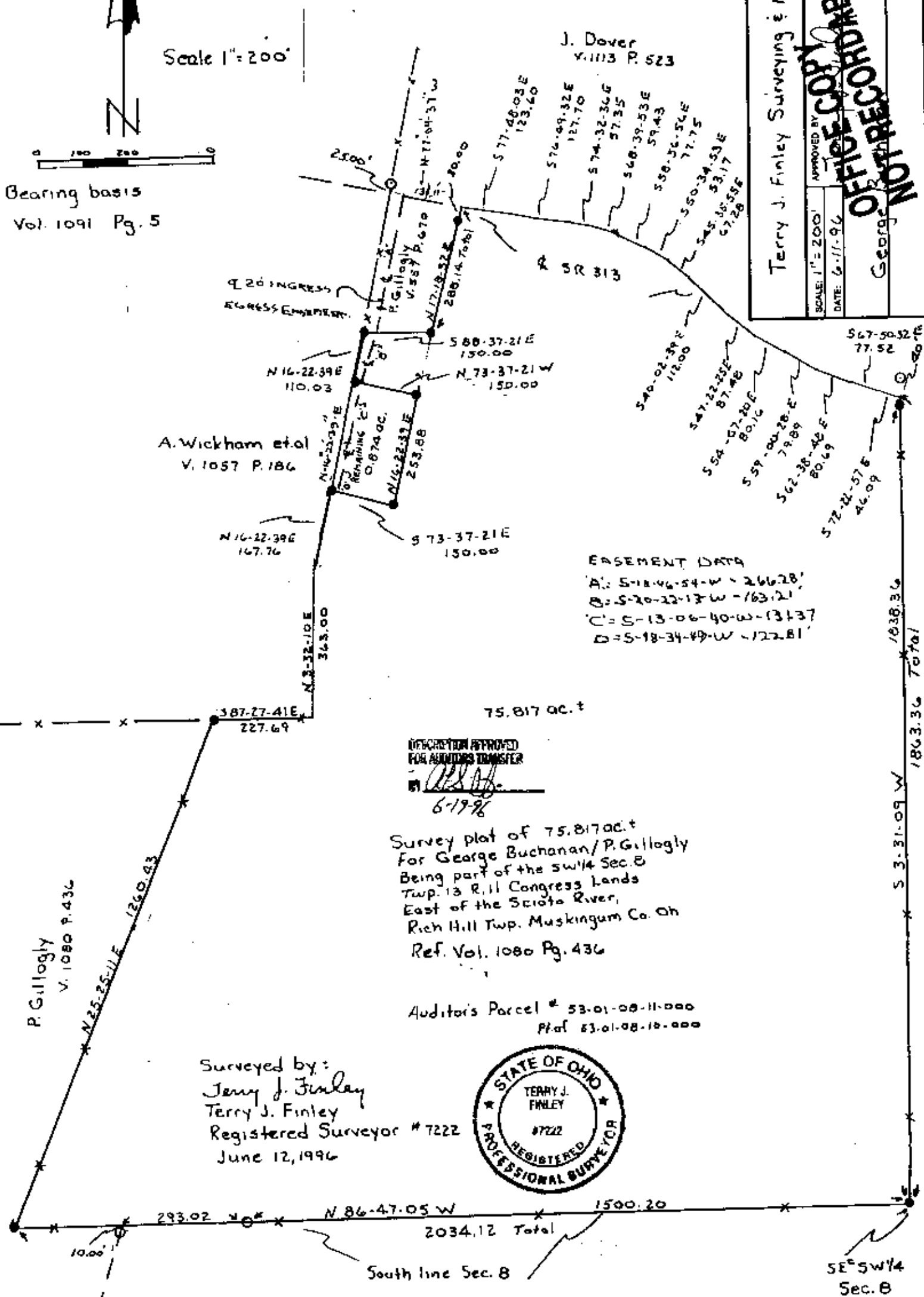
- 1) SOUTH 77 DEGREES - 48 MINUTES - 03 SECONDS EAST, 123.60 FEET TO A POINT;
- 2) SOUTH 76 DEGREES - 49 MINUTES - 32 SECONDS EAST, 127.70 FEET TO A POINT.
- 3) SOUTH 74 DEGREES - 32 MINUTES - 36 SECONDS EAST, 57.35 FEET TO A POINT;
- 4) SOUTH 68 DEGREES - 39 MINUTES - 53 SECONDS EAST, 59.43 FEET TO A POINT;
- 5) SOUTH 58 DEGREES - 56 MINUTES - 56 SECONDS EAST, 77.75 FEET TO A POINT;
- 6) SOUTH 50 DEGREES - 34 MINUTES - 53 SECONDS EAST, 53.17 FEET TO A POINT;
- 7) SOUTH 45 DEGREES - 35 MINUTES - 55 SECONDS EAST, 67.28 FEET TO A POINT;
- 8) SOUTH 40 DEGREES - 02 MINUTES - 39 SECONDS EAST, 112.00 FEET TO A POINT;
- 9) SOUTH 47 DEGREES - 22 MINUTES - 25 SECONDS EAST, 87.48 FEET TO A POINT.
- 10) SOUTH 54 DEGREES - 07 MINUTES - 20 SECONDS EAST, 80.16 FEET TO A POINT;
- 11) SOUTH 59 DEGREES - 00 MINUTES - 28 SECONDS EAST, 79.89 FEET TO A POINT;
- 12) SOUTH 62 DEGREES - 38 MINUTES - 48 SECONDS EAST, 80.69 FEET TO A

Legend: ○ Iron Pin Found
● Iron Pin Set

Scale 1" = 200'



Bearing basis
Vol. 1091 Pg. 5



EASEMENT DATA
 A: S-18-46-54-W - 266.28'
 B: S-20-22-13-W - 163.21'
 C: S-13-06-40-W - 131.37'
 D: S-18-34-49-W - 122.81'

NOTATION APPROVED
 FOR AUDITORS TRANSFER
 6-19-96

Survey plat of 75.817 ac.±
 For George Buchanan/P. Gillogly
 Being part of the SW 1/4 Sec. B
 Twp. 13 R. 11 Congress Lands
 East of the Scioto River,
 Rich Hill Twp. Muskingum Co. Oh
 Ref. Vol. 1080 Pg. 436

Auditor's Parcel # 53-01-08-11-000
 Plat 53-01-08-10-000

Surveyed by:
 Terry J. Finley
 Terry J. Finley
 Registered Surveyor # 7222
 June 12, 1996



Terry J. Finley Surveying & Mapping

APPROVED BY: *S.M.*
 SCALE: 1" = 200'
 DATE: 6-11-96
 OFFICE COPY
 NOT RECORDED
 George Buchanan
 DRAWING NUMBER