

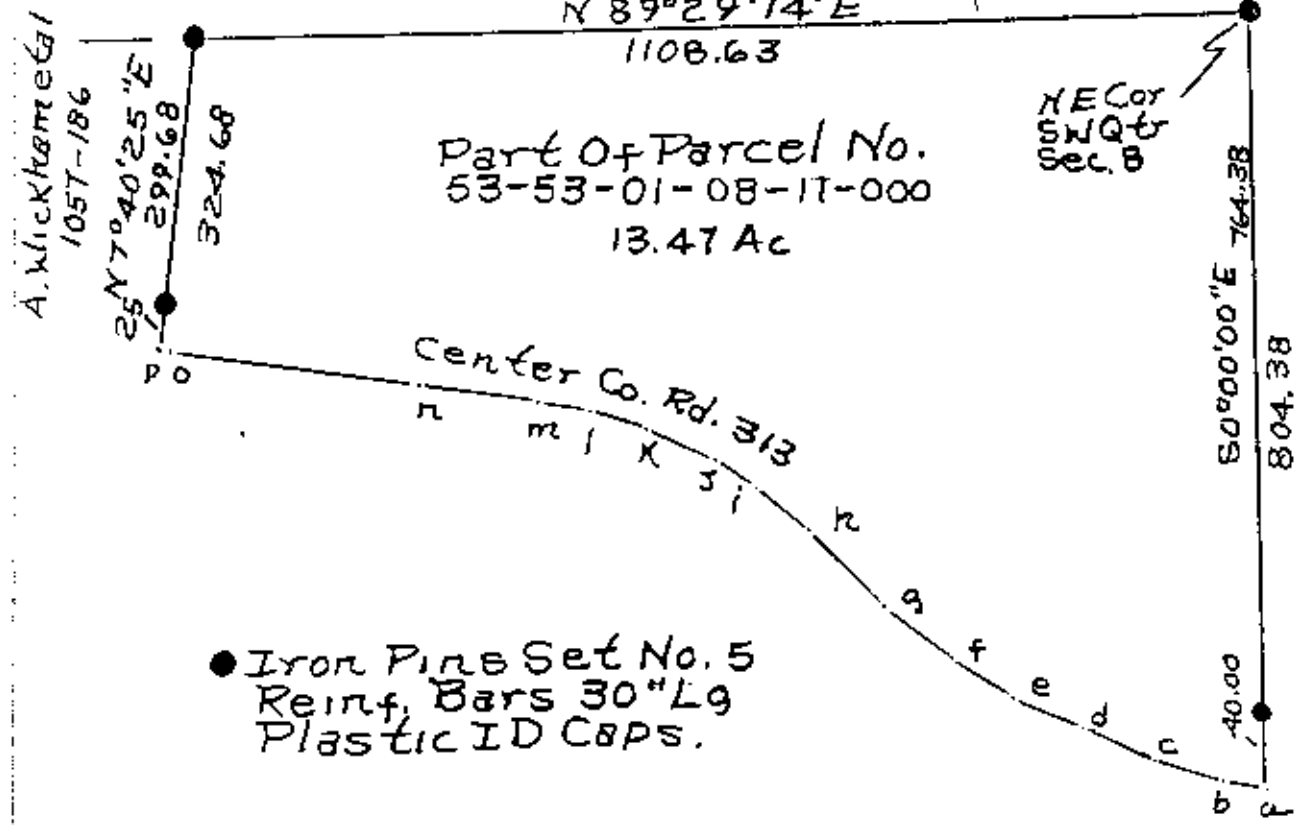
53-01-08-11-001
1385 CLAYSVILLE RD

DESCRIPTION APPROVED
FOR AUDITORS TRANSFER

BY [Signature]
10-2-95

B. Kripe
1073-526

C. Wilson
1084-494



- a-b N 76° 42' 40" W 46.09
- b-c N 72° 10' 15" W 77.52
- c-d N 66° 58' 31" W 80.69
- d-e N 63° 20' 11" W 79.89
- e-f N 58° 27' 03" W 80.16
- f-g N 51° 42' 08" W 87.4
- g-h N 44° 22' 22" W 112.1
- h-i N 49° 55' 38" W 67.2
- i-j N 54° 54' 36" W 53.
- j-k N 63° 16' 39" W 77.
- k-l N 72° 59' 36" W 59.
- l-m N 78° 52' 19" W 57.
- m-n N 81° 09' 15" W 127
- n-o N 82° 07' 46" W 255
- o-p N 78° 46' 56" W 11.

OFFICE COPY
NOT RECORDABLE