



# Linn Engineering, Inc.

SNR

*Civil Engineering Consultants*

740-452-7434 • 1-800-991-7434 • FAX 740-452-5198

534 Market Street • P.O. Box 2086 • Zanesville, Ohio 43702-2086

**Infinite Opportunities, LLC  
Muskingum County Official Record 1838-71  
Lot 11**

Situated in the State of Ohio, County of Muskingum, Township of Rich Hill, bounded and described as follows:

Being part of Section 2, Township 13, Range 11 of Congress Lands East of the Scioto River, also being part of lands now owned by Infinite Opportunities, LLC as described in Muskingum County Official Record 1838-71, and more particularly described as follows:

Beginning for reference at a stone found on the Northwest Corner of Lot 21 of Quarter Township 3 of Westland Township, Guernsey County;

thence along the west line of Lot 21 and through lands now owned by Infinite Opportunities, LLC (Guernsey County OR 387-320), South 01 degrees 58 minutes 17 seconds West for a distance of 1955.92 feet to a point;

thence through said Infinite Opportunities lands the following three courses:

- 1) South 89 degrees 03 minutes 14 seconds West for a distance of 462.19 feet to an iron pin set, passing an iron pin set at 381.50 feet;
- 2) South 77 degrees 58 minutes 57 seconds West for a distance of 438.01 feet to an iron pin set;
- 3) South 17 degrees 21 minutes 11 seconds East for a distance of 789.11 feet to an iron pin set on the Guernsey/Muskingum County line and the principal place of beginning;

thence through lands now owned by Infinite Opportunities, LLC (Muskingum County OR 1838-71) South 17 degrees 21 minutes 11 seconds East for a distance of 104.67 feet to a point on the centerline of State Route 313, passing an iron pin set at 79.67 feet;

thence along the centerline of said State Route 313 and the south line of said Infinite Opportunities lands (OR 1838-71) the following two courses:

- 1) a curve to the right having a radius of 812.70 feet and an arc length of 450.46 feet, being subtended by a chord bearing South 83 degrees 43 minutes 18 seconds West for a distance of 444.72 feet to a point;
- 2) North 80 degrees 23 minutes 58 seconds West for a distance of 42.04 feet to a point;

thence leaving said centerline and through said Infinite Opportunities lands (OR 1838-71) North 40 degrees 40 minutes 19 seconds West for a distance of 215.36 feet to an iron pin set on said county line, passing an iron pin set at 39.12 feet;

thence along said county line South 87 degrees 53 minutes 34 seconds East for a distance of 593.03 feet to the principal place of beginning;

containing 1.92 acres, more or less, subject to all legal road right of ways and applicable easements, written or implied.

Iron pins set are 5/8 inch diameter by 30 inch long rebar with plastic identification caps.

APPROVED FOR CLOSURE

EXEMPT FROM  
PLANNING COMMISSION

*A.L. Swinehart*

5-27-2005 CLS

*C.S. Sullivan*

6-1-2005

**OFFICE COPY  
NOT RECORDABLE**

Bearings are based on NAD 83, Ohio State Plane Coordinate System, South Zone, Grid North, as per GPS observations of Muskingum County GPS Monuments.

This description is written based on a survey completed May 19, 2005 by Timothy H. Linn, Reg. No. 7113.

*Office Copy*  
**NOT RECORDABLE** 5/19/05  
Date  
Timothy H. Linn, Reg. No. 7113



**PARCEL NO.:** Part of: 53-30-02-02-000 (0.17 Ac.)  
Part of: 53-30-02-03-000 (1.75 Ac.)

*Copy*

**SITUATED IN**

The State of Ohio, County of Muskingum,  
Township of Rich Hill, and being part of  
Section 2, T13, R11, Congress Lands East  
of the Scioto River.

**LEGEND**

- ⊙ Iron Pin Set, 5/8" rebar
- Iron Pin Found

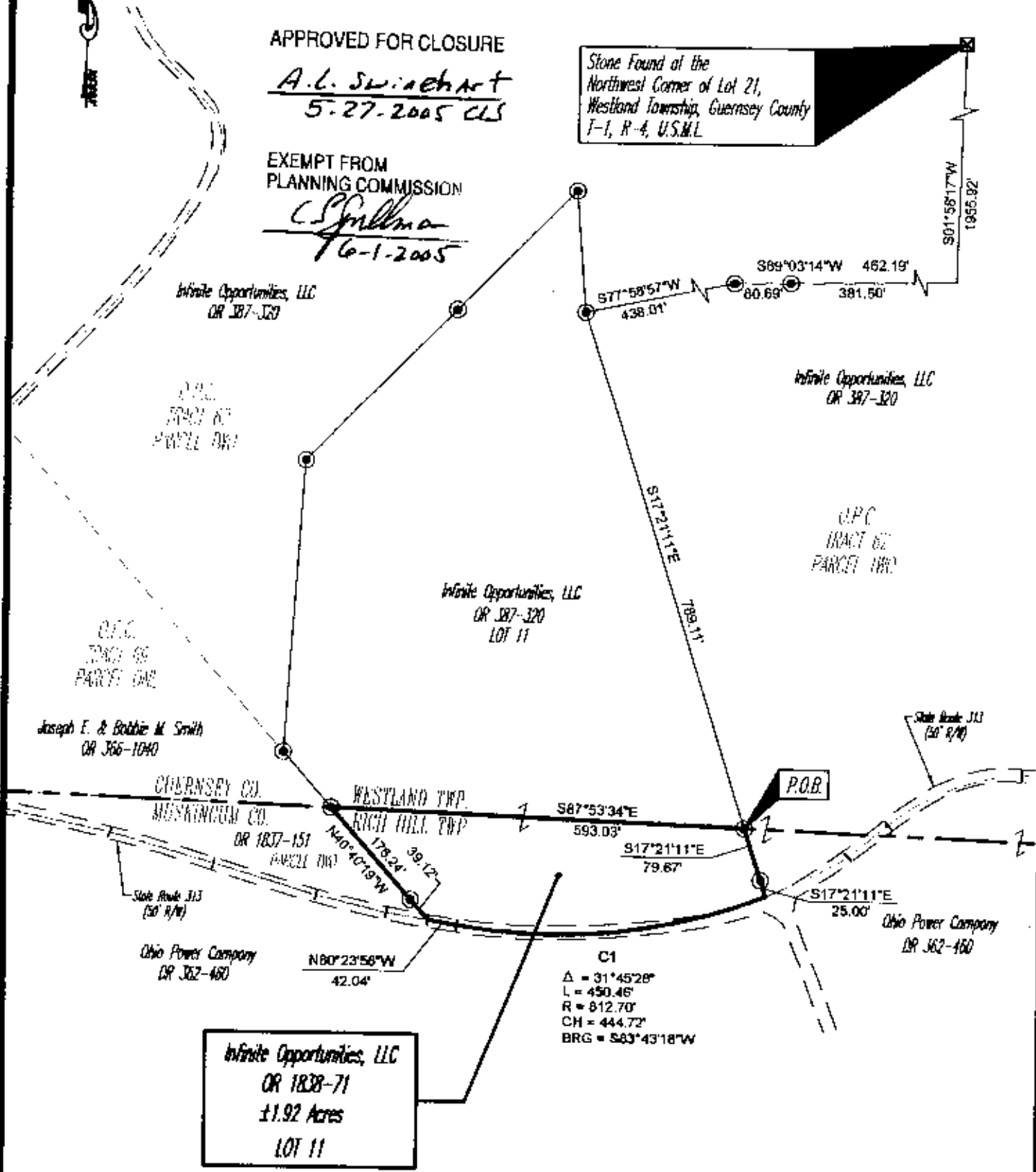
APPROVED FOR CLOSURE

*A.L. Swiachart*  
5-27-2005 CLS

EXEMPT FROM  
PLANNING COMMISSION

*C. Spillma*  
7-6-1-2005

Stone Found at the  
Northwest Corner of Lot 21,  
Westland Township, Guernsey County  
T-1, R-4, U.S.M.L.



Infinite Opportunities, LLC  
OR 1838-71  
±1.92 Acres  
LOT 11

**BASIS OF BEARING**

Bearings are based on NAD 83, Ohio State Plane  
Coordinate System, South Zone, Grid North, as per  
GPS observations of Muskingum County GPS Monuments.

**REFERENCES**

- DR 362-460
- DR 387-320
- DR 1838-71

**PARCEL NO.**

- Part of: 53-30-02-02-000 (±0.17 ac.)
- Part of: 53-30-02-03-000 (±1.75 ac.)

**OFFICE COPY  
NOT RECORDABLE**  
*Timothy H. Linn*  
Reg. Surveyor No. 7113

**GRAPHIC SCALE**



( IN FEET )  
1 Inch = 200 ft.

Project No.: MILL-441



Linn Engineering, Inc. 740-452-7434  
Civil Engineering Consultants  
P.O. Box 2088 Eanesville, Ohio 43702-8088