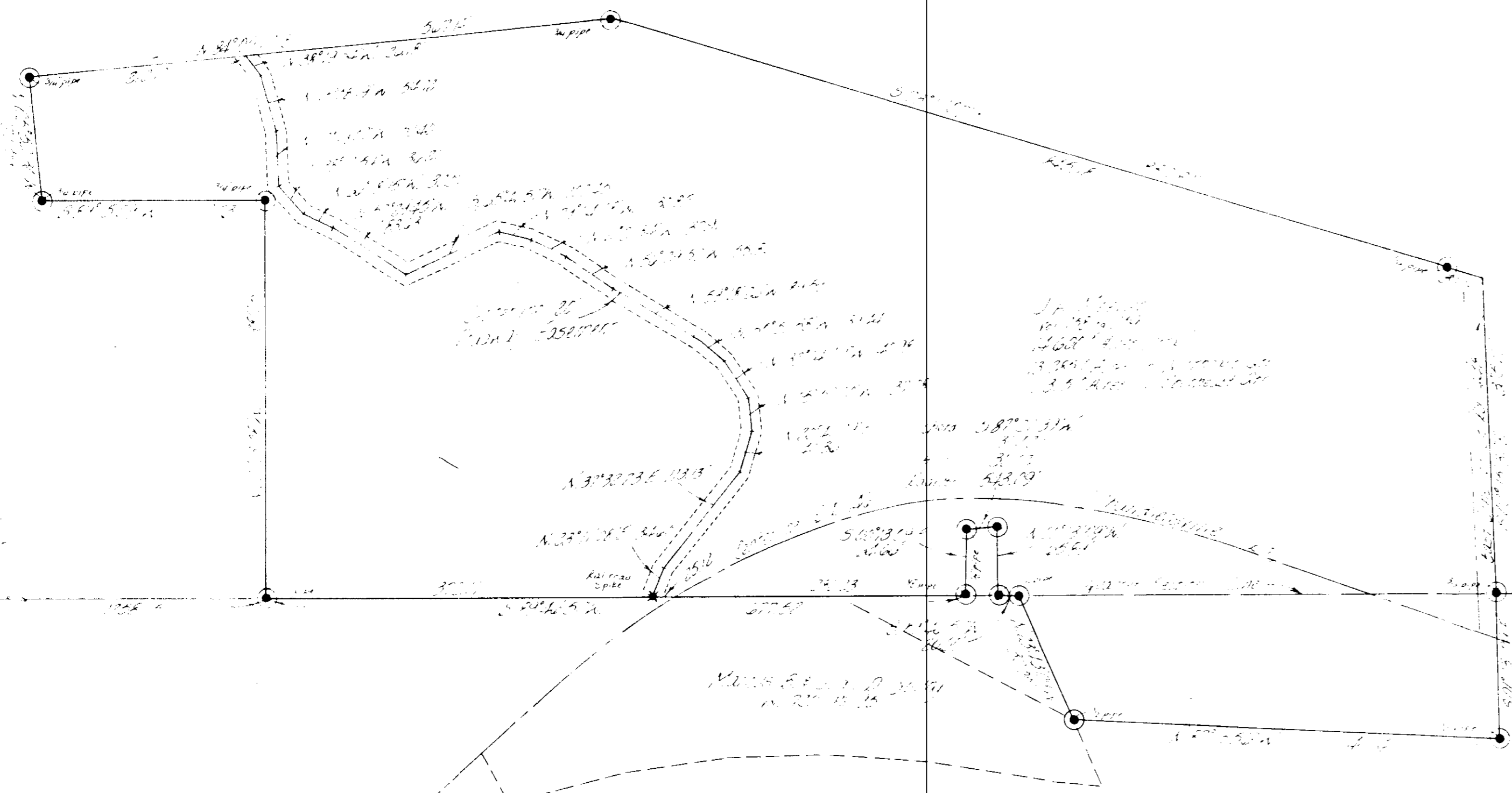
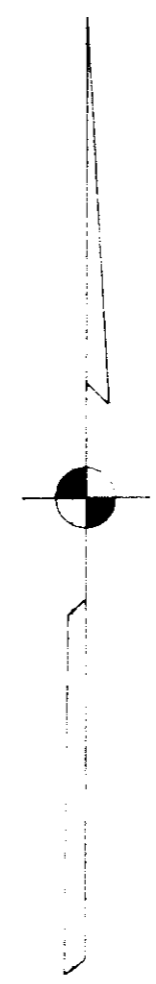


53-40-20-62
53-40-20-27



MEASUREMENT
BY [unclear]
DATE [unclear]

- [unclear]
- [unclear]
- [unclear]

Section 20, Township 20S, Range 40E, Meridian 12W

Southwest corner
of the Northeast 1/4
of Section 20

DESCRIPTION APPROVED
for Auditor's transfer
By W. J. Biedenbach
12-16-83

Area shown is the part of Section 20, Township 20S, Range 40E, Meridian 12W, Ohio, which is owned by [unclear]

OFFICE
NOTICE
W. J. Biedenbach
[unclear]

W. J. BIEDENBACH & ASSOC.
Surveying & Mapping
3120 Lisa Ln., Zanesville, Ohio 43701
(614) 453-4850

DATE	BY	REVISION
12-16-83	WJB	1

OK
WJB