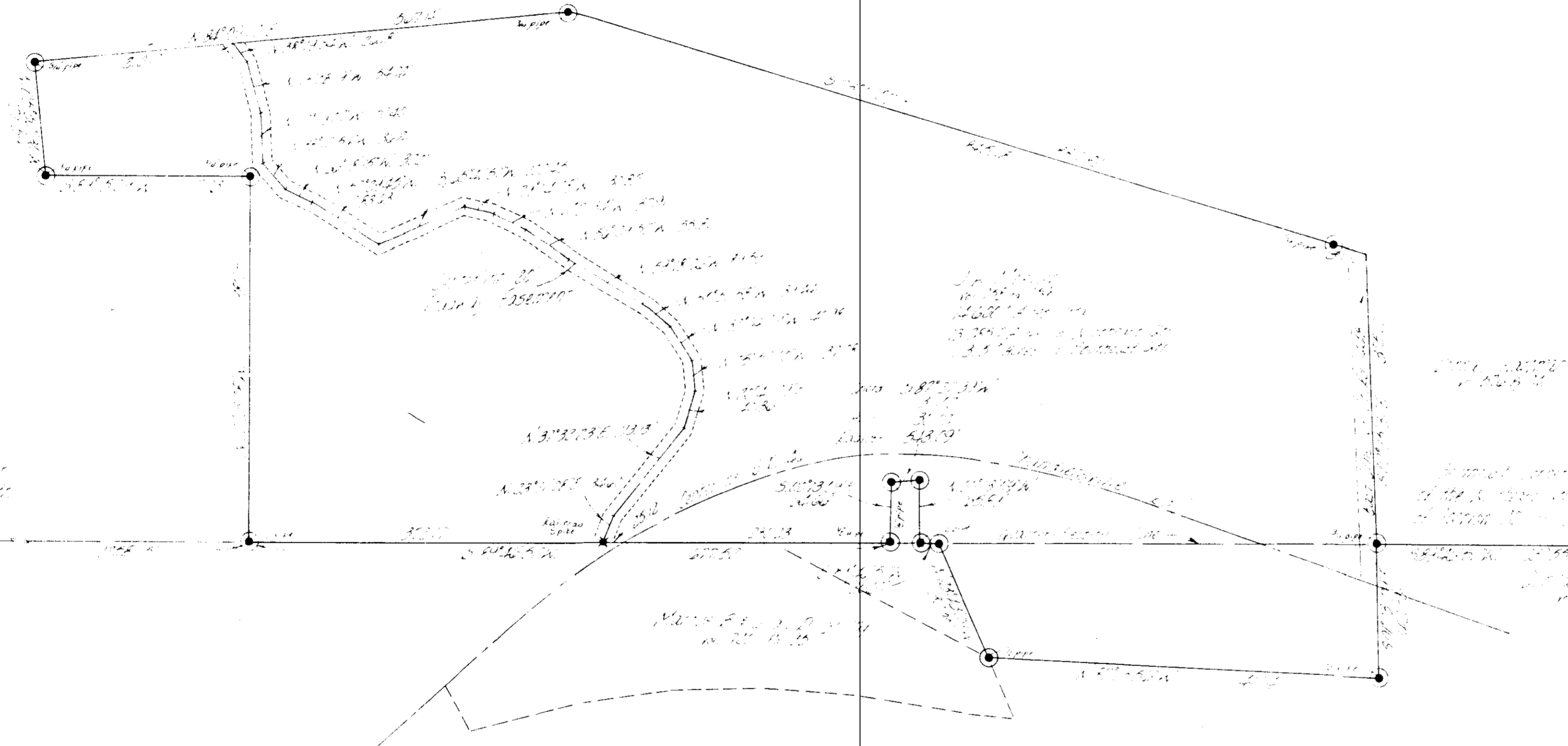
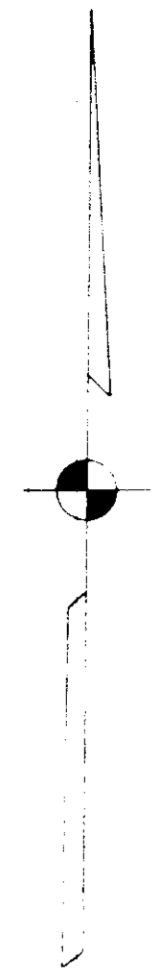


53-40-20-02  
53-40-20-27



Southwest corner  
of the Northeast 1/4  
of Section 20

- Surveyed Station
- Old Station
- New Station

Section 20, Township 20 N, Range 40 E, Meridian 12 W

DESCRIPTION APPROVED  
for Auditor's transfer  
By W. J. Biedenbach  
12-16-83

From a plat for the same quarter and a part of the quarter corner of Section 20,  
Twp. 20 N., R. 40 E., Mer. 12 W., and also a part of the quarter corner, Rich Hill, Indiana,  
Indiana State Map.

OFFICE  
NOT RECORDED

W. J. BIEDENBACH & ASSOC.  
Surveying & Mapping  
3120 Lisa Ln. Zanesville, Ohio 43701  
(614) 453-4850

Drawn	WJB	Check	WJB
Field	WJB	Indexed	WJB
Plotted	WJB	Filed	WJB

OK WJB