

Survey Split

SITUATED IN

The State of Ohio, County of Muskingum
Township of Rich Hill, and being a part
of the NE Qtr. of Sec. 29, T13, R11.

BASIS OF BEARING

Bearings are based on State Plane Grid Coordinates,
NAD83, Ohio South, per GPS Observation.

APPROVED
MUSKINGUM COUNTY
PLANNING COMMISSION DIRECTOR

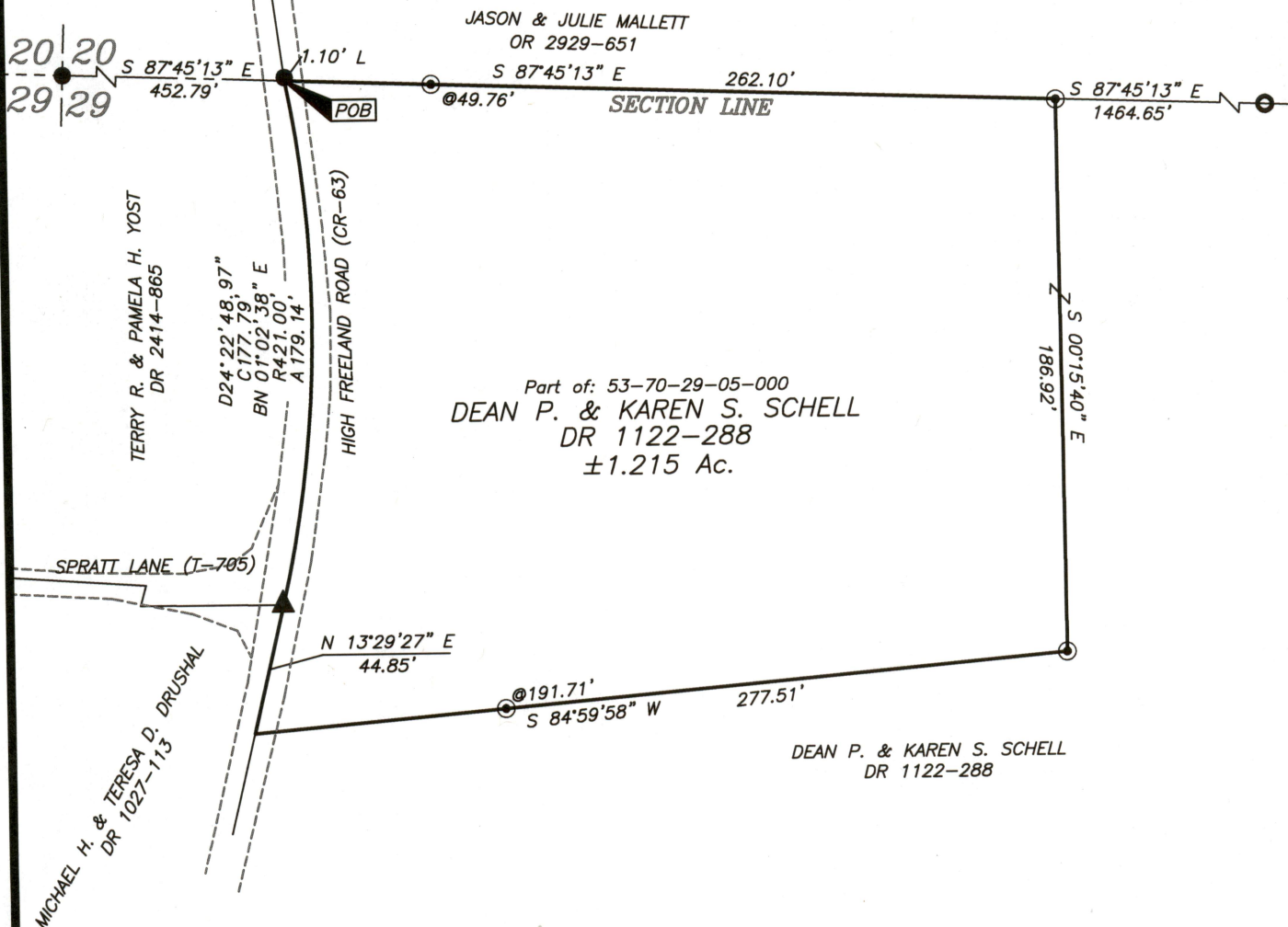
Date

Fee Paid

REFERENCES

* As Noted on Plat
www.muskingumcountyauditor.org
www.mceo.org
<http://recorder.muskingumcounty.org>

Previous Surveys by:
Harkness and Finley



ADJOINER STATEMENT

Not to be used as a separate building
site or transferred as an independent
parcel in the future without planning
commission approval in accordance with
applicable subdivision regulations.

LEGEND

- ▲ Gin Pin Found
- Iron Pin Found
- Pipe Found w/cap
- ⊠ Stone Found
- Property Hook
- Iron Pin Set
- Ex. Fence

DESCRIPTION
APPROVED

By: Brian Kelly McPeck

OFFICE COPY
NOT RECORDABLE

Brian Kelly McPeck
Reg. Surveyor No. 8517

Date

Graphic Scale



(IN FEET)

1 inch = 60 ft.

MCPEEK
LAND
SURVEYING

www.mcpeeklandsurveying.com
email: brian@mcpeeklandsurveying.com
340 Robin Hood Ln., * Zanesville, Oh 43701 * 740.704.6073