

53-70-29-18 SNR

June 28, 1982

Description of 5.27 Acre Cut-Out  
from the Clyde P. Schell Farm

Situate in the State of Ohio, County of Muskingum, Township of Rich Hill,  
Section 29, Township-13-North, Range-11-East, United States Military Lands,  
being part of the East Half of said Section 29, being more particularly described  
as follows:

Commencing at a stone found at the Northwest corner of the Northeast Quarter of  
Section 29;

thence, N 89°37'25" E, along the South line of said Northeast Quarter, 867.91  
feet to an iron bar set in the center of High Freeland Road (County Road 63),  
being the TRUE POINT OF BEGINNING for the tract herein described;

thence, along High Freeland Road, the following courses:

- 1 N 15°04'33" E, 87.23 feet to a point;
- 2 N 14°42'51" E, 347.15 feet to a point on the bridge over the Buffalo  
Fork of Salt Creek;
- 3 N 14°24'01" E, 273.34 feet to a spike set at the intersection of  
High Freeland Road with Founds Road (Twp. Rd. 453);

thence, along Founds Road the following courses:

- 4 N 84°27'21" E, 83.93 feet to a point;
- 5 N 79°06'26" E, 89.31 feet to a point;
- 6 N 83°07'51" E, 178.88 feet to a point;
- 7 S 85°01'32" E, 134.43 feet to a point;
- 8 S 56°06'09" E, 100.98 feet to a point;
- 9 S 49°55'36" E, 136.61 feet to a point;
- 10 S 61°56'23" E, 83.47 feet to a point;
- 11 S 63°39'23" E, 51.04 feet to a point;
- 12 S 60°27'41" E, 167.69 feet to a point;
- 13 S 52°14'48" E, 176.02 feet to a point;
- 14 S 54°45'14" E, 69.82 feet to a point;

thence, S 00°06'51" E, leaving said road, 273.96 feet to an iron pipe set in the  
South line of the Northeast Quarter of Sec. 29;

thence, S 89°37'25" W, along said South line, 513.25 feet to an iron pipe set;

thence, N 50°00'00" W, a distance of 186.77 feet to an iron pipe set;

thence, N 76°46'34" W, a distance of 170.94 feet to an iron pipe set;

thence, S 64°59'36" W, a distance of 386.76 feet to an iron pipe set in the  
South line of said N.E. Quarter;

thence, S 89°37'25" W, along said South line, 138.78 feet to the TRUE POINT OF  
BEGINNING.

Containing 15.27 Acres.

Being a part of the same tract of land conveyed to Clyde P. and Marie P. Schell  
by Deed Volume 370, Page 18, Muskingum County Records.

Subject to all legal conditions, easements and rights-of-way of record.

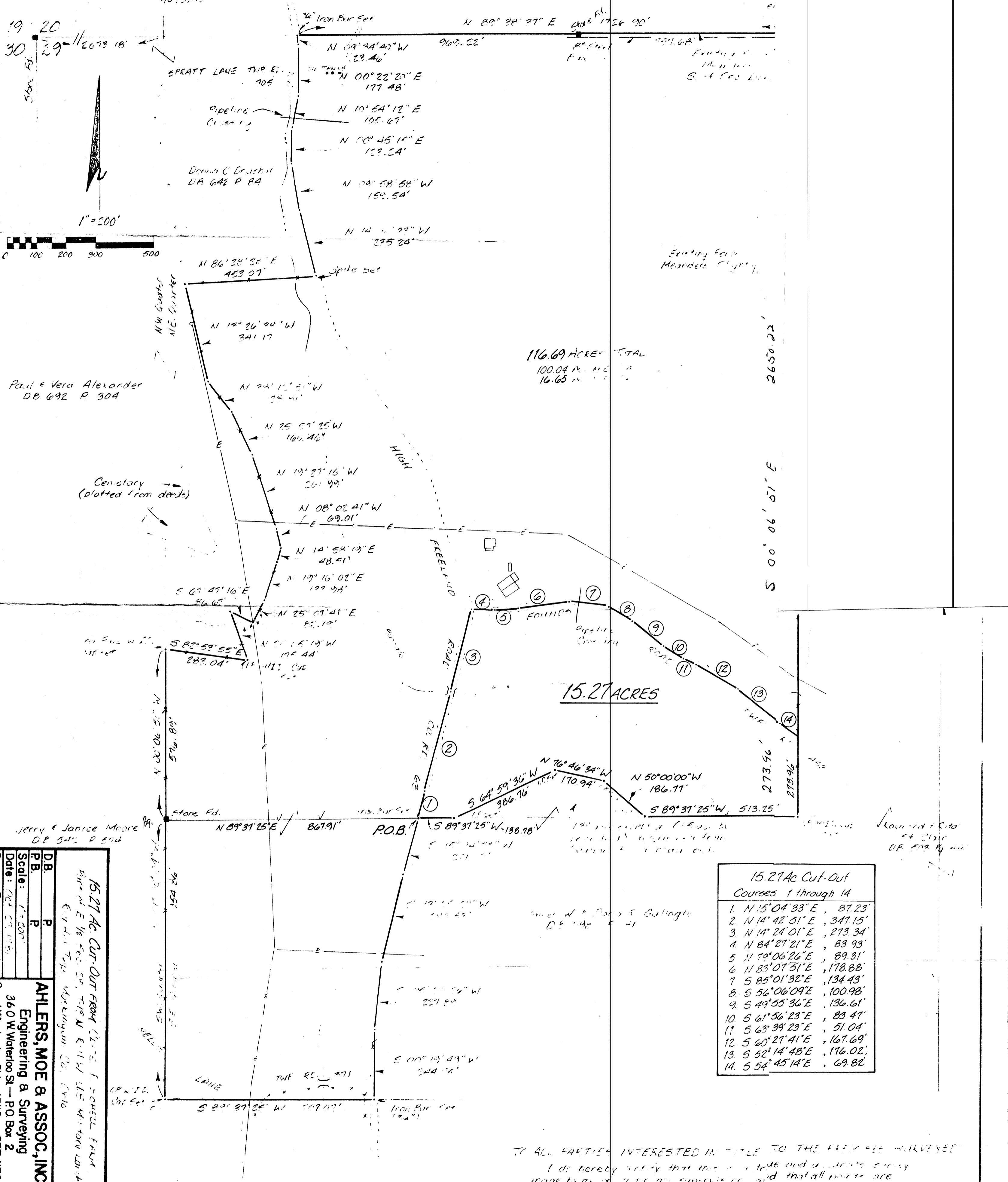
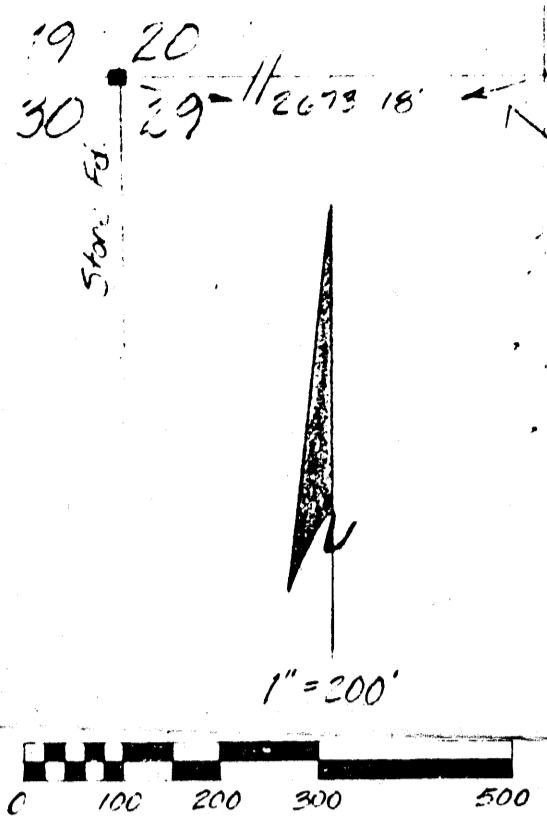
This description prepared by Ahlers, Mac and Assoc., Inc., June 28, 1982 based  
on an actual survey by same in October 1981.

John A. Mac 6200

OFFICE COPY  
NOT RECORDABLE

NOTE: North based on a line between 2 stakes on the North line of S.W. 29 bearing N 89° 24' 27" E 4095.43'

Edwin E. & Mildred M. Wurne  
D.E. 545 P 862



Paul & Vera Alexander  
D.B. 692 P 304

Donna C. Driskill  
D.B. 642 P 84

116.69 ACRES TOTAL  
100.04 AC. NE 1/4  
16.65 AC. S 1/4

15.27 ACRES

Jerry & Janice Moore  
D.B. 542 P 544

15.27 Ac Cut-Out  
Courses 1 through 14

1	N 15° 04' 33" E	87.23'
2	N 14° 42' 51" E	347.15'
3	N 14° 24' 01" E	273.34'
4	N 84° 27' 21" E	83.93'
5	N 70° 06' 26" E	89.31'
6	N 83° 07' 51" E	178.88'
7	S 85° 01' 32" E	134.43'
8	S 56° 06' 09" E	100.98'
9	S 49° 55' 36" E	136.61'
10	S 61° 56' 23" E	89.47'
11	S 63° 39' 23" E	51.04'
12	S 60° 27' 41" E	167.69'
13	S 52° 14' 48" E	176.02'
14	S 54° 45' 14" E	69.82'

15.27 Ac. Cut-Out From 1/4 Sec. 1, T4N, R10E, S12E, FARM  
Bearing N 14° 24' 01" E 273.34' N 14° 24' 01" E 273.34' N 14° 24' 01" E 273.34'  
E. W. 1/4 T4N, R10E, S12E, FARM  
C. W. 1/4 T4N, R10E, S12E, FARM

**AHLERS, MOE & ASSOC., INC.**  
Engineering & Surveying  
360 W. Waterloo St. - P.O. Box 2  
Cantel Winchester, Ohio 43110 857-1178

DB: P  
PB: P  
Scale: 1" = 200'  
Date: Oct 29, 1985  
Drawn By: JAE

John D. & E. Carpenter  
D.B. 554 P 411

TO ALL PARTIES INTERESTED IN TITLE TO THE HEREIN SURVEYED  
I do hereby certify that this is a true and correct copy  
made by me or under my supervision and that all courses are  
as called for and that there are no omissions or omissions  
any other way shown.

OFFICE COPY  
NOT RECORDABLE

