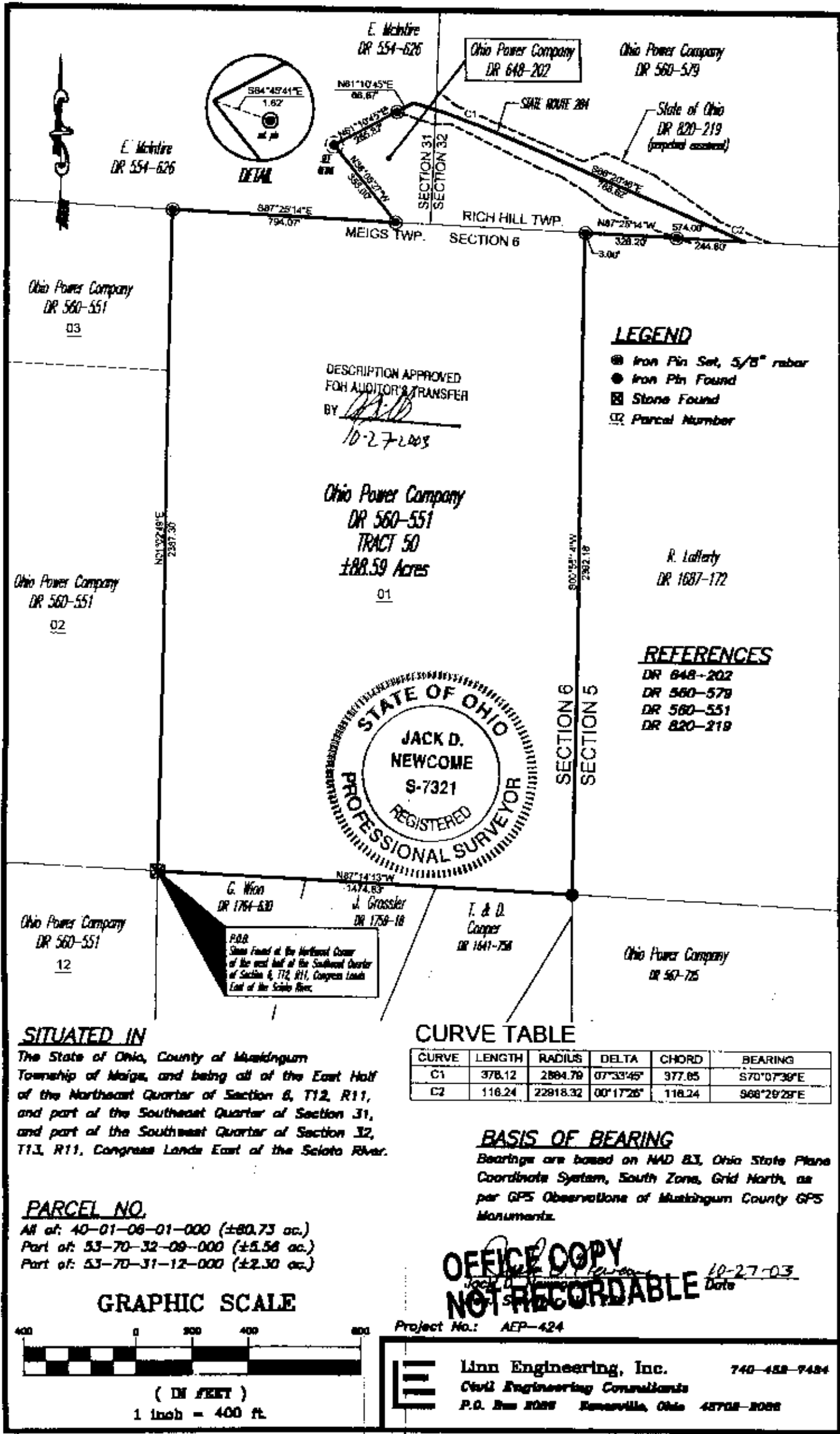


SNR



G:\civil\ae\p\ae\p-424\survey-tracts50-56.dwg, 10/24/03 03:16:48 PM, VHC

DESCRIPTION APPROVED FOR AUDITOR'S TRANSFER BY *J.D.N.* 10-27-2003



P.O.S. Stone Found at the Northwest Corner of the east half of the Southeast Quarter of Section 6, T12, R11, Congress Lands East of the Scioto River.