

JOHN R. MARSHALL  
REGISTERED SURVEYOR  
530 LINGVIEW AVENUE  
ZANESVILLE, OHIO 43701

10E 4  
S3-80-28-10

SITUATED IN THE STATE OF OHIO COUNTY  
OF MUSKINGUM AND TOWNSHIP OF RICHHILL,

BEING A PART OF THE SOUTHWEST QUARTER  
OF SECTION 28, SOUTH HALF OF QUARTER TOWNSHIP  
3 TOWNSHIP 13, RANGE 11, BOUNDED AND DESCRIBED  
AS FOLLOWS:

BEGINNING AT THE SOUTHEAST CORNER OF  
SAID SOUTHWEST QUARTER OF SECTION 28;  
THENCE NORTH 82 DEGREES 49 MINUTES 53  
SECONDS WEST ALONG THE SOUTH LINE OF  
SAID SECTION A DISTANCE OF 2669.66 FEET  
TO AN IRON PIN AT THE SOUTHWEST CORNER  
OF SAID SOUTHWEST QUARTER; THENCE NORTH  
07 DEGREES 25 MINUTES 38 SECONDS EAST  
ALONG THE WESTERLY LINE OF SAID SECTION A  
DISTANCE OF 2651.42 FEET TO AN IRON PIN  
AT THE NORTHWEST CORNER OF SAID QUARTER;  
THENCE SOUTH 83 DEGREES 10 MINUTES 45  
SECONDS EAST ALONG THE HALF SECTION LINE  
A DISTANCE OF 97.78 FEET TO A POINT IN  
THE CENTER LINE OF FOUNDS ROAD; THENCE  
SOUTH 45 DEGREES 07 MINUTES 00 SECONDS  
EAST ALONG SAID CENTER LINE A DISTANCE

OF 58.94 FEET TO A POINT; THENCE SOUTH  
30 DEGREES 50 MINUTES 10 SECONDS EAST  
ALONG SAID CENTER LINE A DISTANCE OF  
123.45 FEET TO A POINT; THENCE SOUTH 21  
DEGREES 50 MINUTES 20 SECONDS EAST  
ALONG SAID CENTER LINE A DISTANCE OF  
262.22 FEET TO A POINT; THENCE SOUTH 29  
DEGREES 45 MINUTES 40 SECONDS EAST ALONG  
SAID CENTER LINE A DISTANCE OF 770.2 FEET  
TO A POINT; THENCE SOUTH 54 DEGREES 00  
MINUTES 30 SECONDS EAST ALONG SAID CENTER-  
LINE A DISTANCE OF 171.08 FEET TO A POINT;  
THENCE SOUTH 43 DEGREES 55 MINUTES 20  
SECONDS EAST ALONG SAID CENTER LINE A  
DISTANCE OF 123.26 FEET TO A POINT; THENCE  
SOUTH 44 DEGREES 41 MINUTES 30 SECONDS  
EAST ALONG SAID CENTER LINE A DISTANCE  
OF 159.75 FEET TO A POINT; THENCE SOUTH 42  
DEGREES 29 MINUTES 00 SECONDS EAST ALONG  
SAID CENTER LINE A DISTANCE OF 243.18 FEET  
TO A POINT; THENCE SOUTH 34 DEGREES 49  
MINUTES 00 SECONDS EAST ALONG SAID CENTER-  
LINE A DISTANCE OF 154.79 FEET TO A POINT;  
THENCE SOUTH 26 DEGREES 07 MINUTES 40  
SECONDS EAST ALONG SAID CENTER LINE A  
DISTANCE OF 389.11 FEET TO A POINT; THENCE  
SOUTH 14 DEGREES 00 MINUTES 30 SECONDS  
EAST ALONG SAID CENTER LINE A DISTANCE  
OF 220.87 FEET TO A POINT; THENCE SOUTH  
33 DEGREES 01 MINUTES 10 SECONDS EAST ALONG

SAID CENTER LINE A DISTANCE OF 132.79 FEET TO A POINT; THENCE SOUTH 52 DEGREES 37 MINUTES 50 SECONDS EAST ALONG SAID CENTER LINE A DISTANCE OF 338.02 FEET TO A POINT; THENCE SOUTH 67 DEGREES 51 MINUTES 20 SECONDS EAST ALONG SAID CENTER LINE A DISTANCE OF 28.49 FEET TO A POINT; THENCE NORTH 89 DEGREES 24 MINUTES 30 SECONDS EAST ALONG SAID CENTER LINE A DISTANCE OF 86.07 FEET TO A POINT; THENCE NORTH 75 DEGREES 49 MINUTES 00 SECONDS EAST ALONG SAID CENTER LINE A DISTANCE OF 152.72 FEET TO A POINT; THENCE NORTH 57 DEGREES 38 MINUTES 00 SECONDS EAST ALONG SAID CENTER LINE A DISTANCE OF 130.78 FEET TO A POINT; THENCE NORTH 43 DEGREES 19 MINUTES 00 SECONDS EAST ALONG SAID CENTER LINE A DISTANCE OF 289.72 FEET TO A POINT; THENCE NORTH 35 DEGREES 09 MINUTES 40 SECONDS EAST ALONG SAID CENTER LINE A DISTANCE OF 234.08 FEET TO A POINT; THENCE NORTH 46 DEGREES 53 MINUTES 10 SECONDS EAST ALONG SAID CENTER LINE A DISTANCE OF 169.47 FEET TO A POINT; THENCE NORTH 37 DEGREES 02 MINUTES 30 SECONDS EAST ALONG SAID CENTER LINE A DISTANCE OF 154.15 FEET TO A POINT; THENCE NORTH 58 DEGREES 52 MINUTES 40 SECONDS EAST ALONG SAID CENTER LINE A DISTANCE OF 191.85 FEET TO A POINT ON THE HALF SECTION

LINE OF SAID SECTION 28; THENCE SOUTH 06 DEGREES 49 MINUTES 30 SECONDS EAST ALONG SAID HALF SECTION LINE A DISTANCE OF 1859.51 FEET TO THE PLACE OF BEGINNING AND PASSING THROUGH AN IRON PIN AT 20.00 FEET, CONTAINING NINETY SEVEN AND FIFTY FOUR [97.54] ACRES MORE OR LESS.

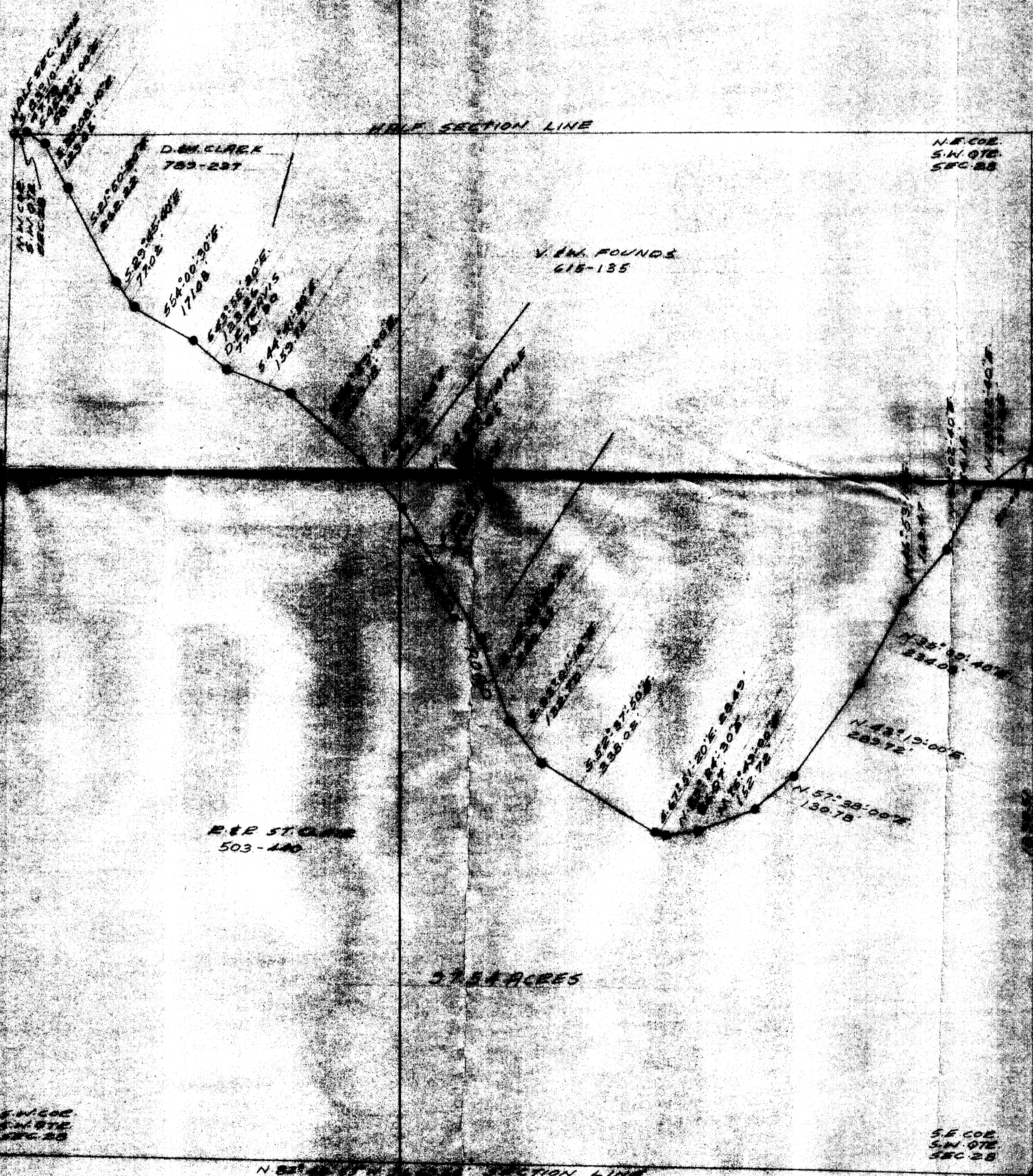
SUBJECT TO THE EASEMENTS OF ALL LEGAL HIGHWAYS.

THIS DESCRIPTION WAS WRITTEN JANUARY 15, 1982 BY JOHN P. MARSHALL REGISTERED SURVEYOR NO 5307

**OFFICE COPY  
NOT RECORDABLE**

DESCRIPTION APPROVED  
for public transaction

BY W. H. H. H. H. H.



D.M. CLARK  
783-237  
S 89° 26' 00" E  
170.5  
S 54° 20' 30" E  
171.0  
S 73° 55' 00" E  
150.0  
S 74° 15' 00" E  
150.0

V.W. FOUNDS  
615-135

R.T. STONE  
503-140

57.84 ACRES

N.E. COR.  
S.W. QTR.  
SEC. 25

S.E. COR.  
S.W. QTR.  
SEC. 25

N 83° 45' 00" E 242.00' SECTION LINE

S.W. COR.  
S.W. QTR.  
SEC. 25

DESCRIPTION APPROVED  
CAR. MILLER'S Attorney  
*[Signature]*

PORT SHOWING  
EYE OF LINE  
200' 00"  
270' 00"  
S.W. COR. OF THE NORTHWEST  
CORNER OF THE NE. QTR. OF THE  
SECTION 25, TOWNSHIP 10 N., RANGE 11 E.,  
COUNTY OF HAMILTON, OHIO.  
PREPARED BY THE SURVEYOR DAVID

OFFICE COPY  
NOT RECORDED  
JOHN E. HALL  
REG. SURVEYOR  
530 LAMAR AVENUE  
ZANESVILLE, OHIO 43701  
JANUARY 14, 1982