

56-80-18-05

56-80-18-03 PS

Being a part of the West Half of Section 18, Township two, Range six, Salem Township, Muskingum County, Ohio and being further described as follows:

Beginning at a point marked by an iron pin at the Southeast Corner of the Northwest Quarter of Section 18, said point being North 90 degrees 00 minutes 00 seconds East 2638.50 feet from a point marked by an existing stone at the Southwest corner of the said Northwest Quarter of section 18; thence South 63 degrees 25 minutes 30 seconds West 582.12 feet to a point marked by an iron pin; thence North 86 degrees 29 minutes 29 seconds West 229.53 feet to a point in the center of Township Road number 82, passing a point marked by an iron pin at 198.88 feet; thence following the centerline of Township Road number 82 the next 21 courses and distances:

- 1) North 18 degrees 20 minutes 18 seconds West 30.97 feet to a point;
- 2) North 50 degrees 26 minutes 42 seconds West 96.84 feet to a point;
- 3) North 42 degrees 39 minutes 50 seconds West 82.61 feet to a point;
- 4) North 31 degrees 10 minutes 52 seconds West 89.78 feet to a point;
- 5) North 25 degrees 47 minutes 32 seconds West 50.70 feet to a point;
- 6) North 22 degrees 48 minutes 52 seconds West 101.85 feet to a point;
- 7) North 16 degrees 42 minutes 53 seconds West 100.94 feet to a point;
- 8) North 10 degrees 35 minutes 14 seconds West 92.27 feet to a point;
- 9) North 05 degrees 22 minutes 06 seconds West 152.39 feet to a point;
- 10) North 01 degree 52 minutes 54 seconds East 113.46 feet to a point;
- 11) North 11 degrees 26 minutes 23 seconds West 62.68 feet to a point;
- 12) North 33 degrees 55 minutes 56 seconds West 41.51 feet to a point;
- 13) North 60 degrees 57 minutes 37 seconds West 89.45 feet to a point;
- 14) North 74 degrees 21 minutes 45 seconds West 95.53 feet to a point;
- 15) North 69 degrees 58 minutes 49 seconds West 68.28 feet to a point;
- 16) North 59 degrees 58 minutes 31 seconds West 41.67 feet to a point;
- 17) North 45 degrees 41 minutes 21 seconds West 78.74 feet to a point;
- 18) North 29 degrees 56 minutes 15 seconds West 174.86 feet to a point;
- 19) North 36 degrees 42 minutes 04 seconds West 38.21 feet to a point;
- 20) North 49 degrees 09 minutes 53 seconds West 25.81 feet to a point;
- 21) North 59 degrees 19 minutes 49 seconds West 22.55 feet to a point;

thence South 89 degrees 17 minutes 30 seconds East 1553.74 feet to a point marked by an iron pin, passing a point marked by an iron pin at 88.59 feet; thence South 00 degrees 34 minutes 20 seconds East 1031.94 feet to the place of beginning.

Containing 31.030 more or less acres (total), 27.550 more or less acres in the Northwest Quarter and 3.480 more or less acres in the South West Quarter, subject to all legal road right-of-ways.

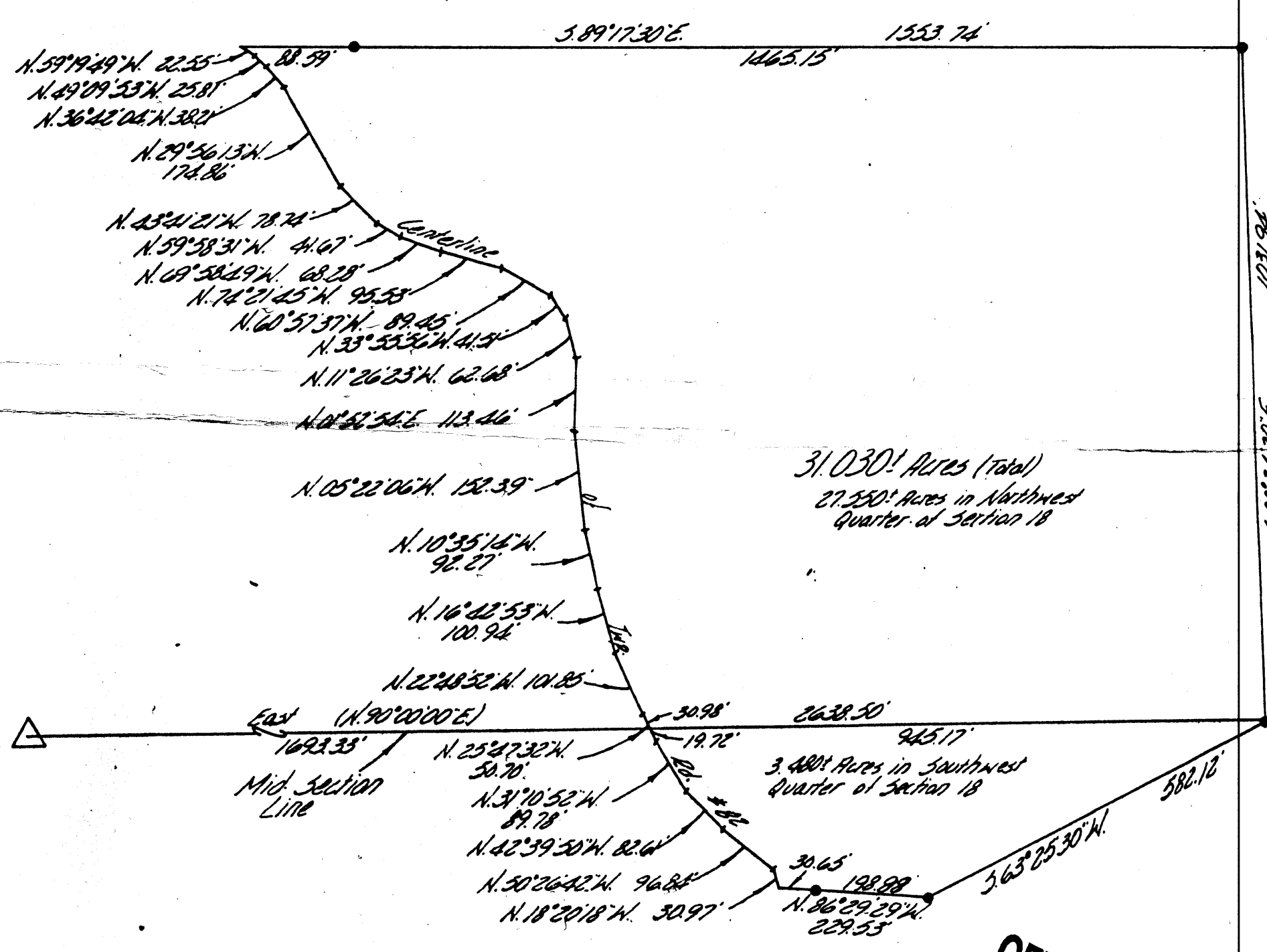
I hereby certify the above plat, description, and survey to be correct as prepared by me, this 14th day of November 1979.

81-08-95

~~OFFICE COPY~~  
~~NOT RECORDABLE~~  
REG. SURVEYOR #5718

**W. J. BIEDENBACH & ASSOC.**  
 Surveying & Mapping  
 3120 Lisa Ln. Zanesville, Ohio 43701  
 (614) 453-4850

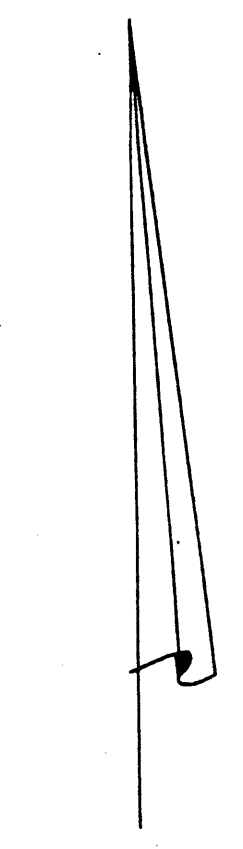
Drawn by: *MB* Date: 11-9-79  
 Scale: 1"=200' Checked by: *MB*  
 11/14/79 6:00 P.M. 79



31,030 Acres (Total)  
27,550 Acres in Northwest  
Quarter of Section 18

3,480 Acres in Southwest  
Quarter of Section 18

Southeast Corner of  
the Northwest Qtr. of  
Section 18



• ~ Iron Pins 5  
△ - Existing 516

**OFFICE COPY  
NOT RECORDABLE**