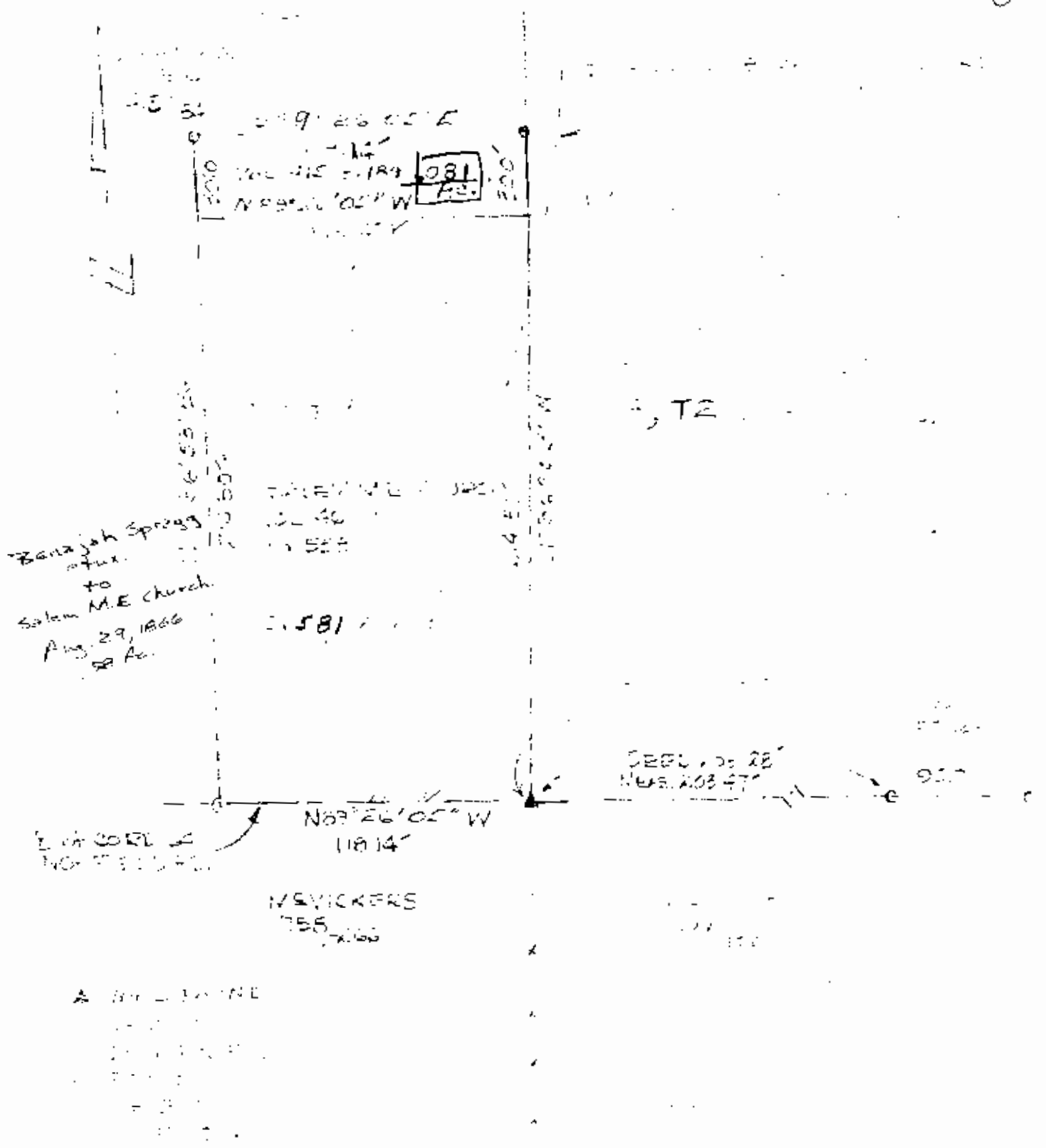


[Faint, illegible text, likely bleed-through from the reverse side of the page]

**OFFICE COPY
NOT RECORDABLE**

- 56-80-18-16
copy



Benajah Springs
atut.
to
Salem M.E. Church
Aug. 29, 1866
88 Ac.

E. of COR. 4
N. of 100' 00\"/>

N89°26'05" W
118.14'

S88° 30' 28"
N. of 100' 00\"/>

N. VICKERS
755
x 166

A 100' 00" LINE
N. of 100' 00\"/>

**OFFICE COPY
NOT RECORDABLE**

PARNELL & ASSOCIATES
ENGINEERS & SURVEYORS

CAMBRIDGE, OHIO 43725

614-439-1701

JOB NO.	SHEET —	DRAWN	APPROVED	DATE

CRYAL
6-30-78