

**BOWMAN & ASSOCIATES
59 SECOND STREET
FRAZEYSBURG, OHIO 43822
PH./FAX (614) 828-2204**

**SURVEY DESCRIPTION
FOR
Carol Goff**

AUDITORS PARCELS

#60-01-05-03-000 (ALL 51.094 ACRES)
#60-10-04-07-000 (ALL 80.538 ACRES)

Situated in the Northwest Quarter of Section #4 and the Northeast Quarter of Section #5, T-13-N, R-12-W, Salt Creek Township, Muskingum County Ohio. Being the lands of Martha Roll as recorded in Deed Book 692 page 271 of the Muskingum County records and being described as follows:

Beginning at a point in the Northwest corner of section #4;

- thence, S.88°07'23"E. a distance of 1,452.00 feet along the South line of Perry Township to a found iron pin on the Northwest corner of the lands, now or formerly, owned by C. Lighthizer (550/053), passing a found iron pin at 646.03 feet;
- thence, S.03°32'42"W. a distance of 330.00 feet along said Lighthizer lands to a found iron pin;
- thence, S.88°07'23"E. a distance of 309.54 feet along said Lighthizer lands to a set iron pin on the West line of the lands, now or formerly, owned by J. Gormley (605/272);
- thence, S.43°52'37"W. a distance of 129.36 feet along said Gormley lands to a set iron pin;
- thence, S.06°22'23"E. a distance of 481.80 feet along said Gormley lands to a set iron pin;
- thence, S.40°07'23"E. a distance of 508.20 feet along said Gormley lands to a set iron pin;
- thence, S.04°33'12"E. a distance of 540.87 feet along said Gormley lands to a point at the Northeast corner of an existing bridge over the Little Salt Creek in the right of way of County Road 5 (Clay Pike), being the Northeast corner of the lands, now or formerly, owned by J. Gormley (1082/545), passing a set iron pin at 500.87 feet;
- thence, S.33°13'07"W. a distance of 180.52 feet through the right of way of said road to a point in the center;
- thence, S.45°14'57"W. a distance of 50.78 feet along said centerline to a point;
- thence, S.74°01'27"W. a distance of 53.85 feet along said centerline to a point;
- thence, N.81°23'41"W. a distance of 60.74 feet along said centerline to a point;
- thence, N.77°03'44"W. a distance of 267.25 feet along said centerline to a point;
- thence, N.80°14'36"W. a distance of 72.16 feet along said centerline to a point;
- thence, N.87°47'44"W. a distance of 70.48 feet along said centerline to a point;
- thence, S.86°35'36"W. a distance of 144.63 feet along said centerline to a point;
- thence, S.85°46'50"W. a distance of 98.83 feet along said centerline to a point;

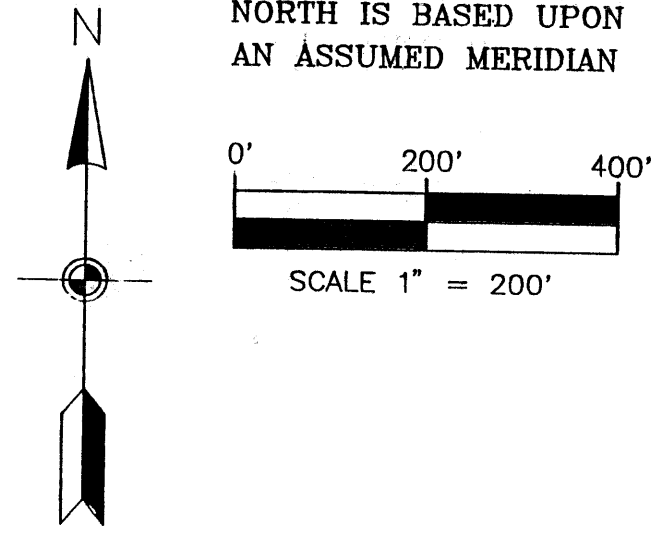
continued

- thence, S.79°57'08"W. a distance of 85.09 feet along said centerline to a point;
- thence, S.71°56'54"W. a distance of 93.31 feet along said centerline to a point;
- thence, S.74°45'08"W. a distance of 198.69 feet along said centerline to a point;
- thence, N.86°59'50"W. a distance of 91.30 feet along said centerline to a point;
- thence, N.75°22'18"W. a distance of 96.57 feet along said centerline to a point;
- thence, N.65°49'05"W. a distance of 92.37 feet along said centerline to a point;
- thence, N.55°30'43"W. a distance of 73.02 feet along said centerline to a point;
- thence, N.46°23'22"W. a distance of 349.99 feet along said centerline to a point;
- thence, N.59°30'49"W. a distance of 163.64 feet along said centerline to a point;
- thence, N.79°43'30"W. a distance of 184.09 feet along said centerline to a point, passing the East line of section #5 at 164.29 feet;
- thence, N.89°54'50"W. a distance of 91.49 feet along said centerline to a point;
- thence, S.89°49'24"W. a distance of 475.21 feet along said centerline to a point;
- thence, S.88°04'57"W. a distance of 734.91 feet along said centerline to a point on the Southeast corner of the lands, now or formerly, owned by J. Norris (1058/171) referenced by a found iron pin bearing S.01°59'45"W. 30.00 feet;
- thence, N.01°59'45"E. a distance of 1,721.35 feet along the east line of said Norris land and the east line of the lands, now or formerly, owned by M. McCall (382/401) to a set iron pin on the South line of Perry Township;
- thence, S.88°07'23"E. a distance of 1,328.08 feet along said Township line to the point of beginning.

Excepting from the above described parcel is a 1.811 acre parcel situated in section #4 conveyed to the Trustees of the Salt Creek Baptist Church recorded in Deed Book 44 page 123 of the Muskingum County Deed records and being described as follows:

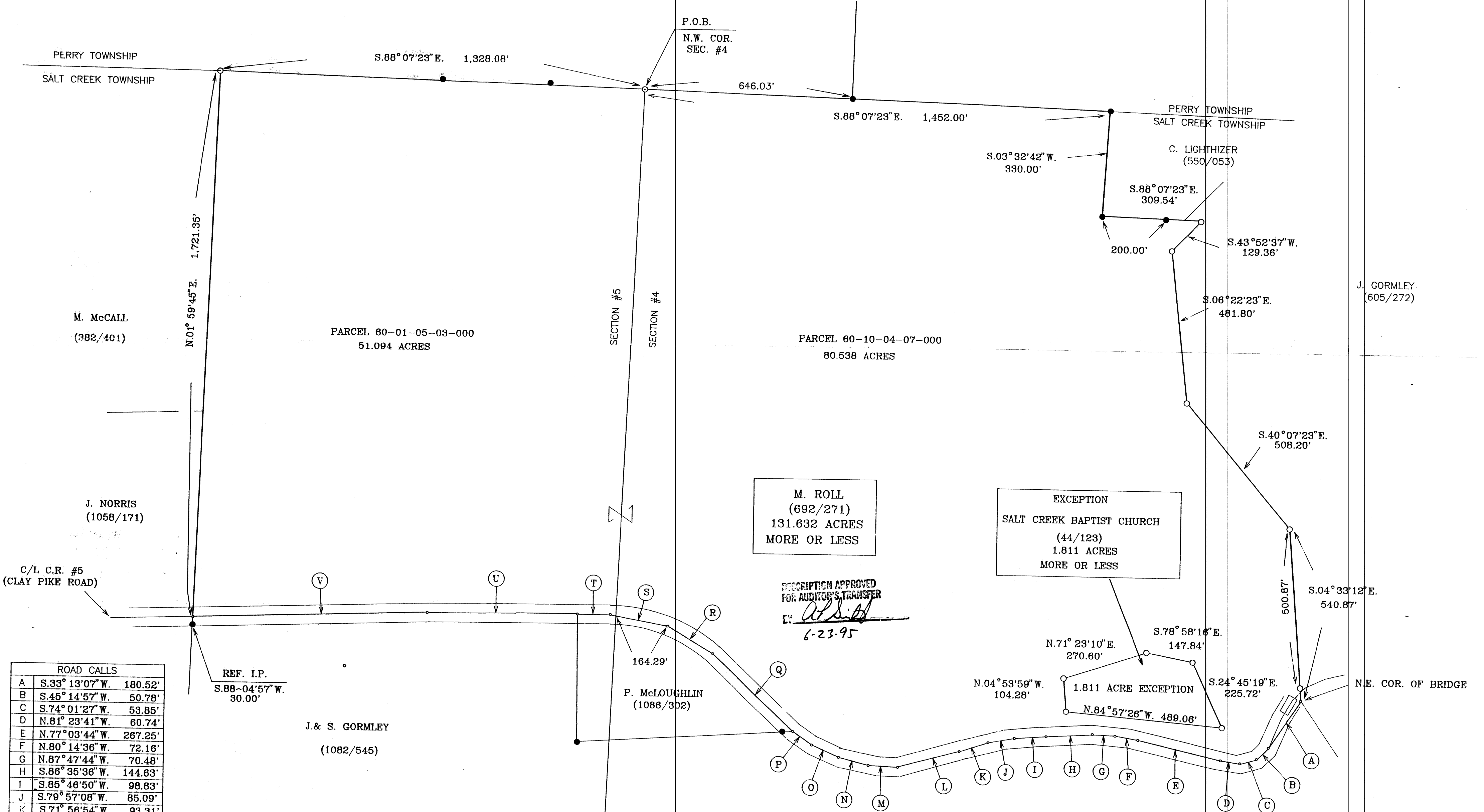
Commencing at a point in the Northwest corner of section #4; thence, S.88°07'23"E. a distance of 1,452.00 feet along the South line of Perry Township to a found iron pin on the Northwest corner of the lands, now or formerly, owned by C. Lighthizer (550/053), passing a found iron pin at 646.03 feet; thence, S.03°32'42"W. a distance of 330.00 feet along said Lighthizer lands to a found iron pin; thence, S.88°07'23"E. a distance of 309.54 feet along said Lighthizer lands to a set iron pin on the West line of the lands, now or formerly, owned by J. Gormley (605/272); thence, S.43°52'37"W. a distance of 129.36 feet along said Gormley lands to a set iron pin; thence, S.06°22'23"E. a distance of 481.80 feet along said Gormley lands to a set iron pin; thence, S.40°07'23"E. a distance of 508.20 feet along said Gormley lands to a set iron pin; thence, S.04°33'12"E. a distance of 540.87 feet along said Gormley lands to a point at the Northeast corner of an existing bridge over the Little Salt Creek in the right of way of County Road 5 (Clay Pike), being the Northeast corner of the lands, now or formerly, owned by J. Gormley (1082/545), passing a set iron pin at 500.87 feet; thence, S.33°13'07"W. a distance of 180.52 feet through the right of way of said road to a point in the center;

continued



SURVEY PLAT FOR CAROL GOFF

SITUATED IN THE NORTHWEST QUARTER OF SECTION #4 AND IN THE NORTHEAST QUARTER OF SECTION #5, T-13, R-12, SALT CREEK TOWNSHIP, MUSKINGUM COUNTY, OHIO. BEING THE LANDS OF MARTHA ROLL AS CONVEYED IN DEED BOOK 692 PAGE 271 OF THE MUSKINGUM COUNTY DEED RECORDS.



ROAD CALLS		
A	S.33° 13'07" W.	180.52'
B	S.45° 14'57" W.	50.78'
C	S.74° 01'27" W.	53.85'
D	N.81° 23'41" W.	60.74'
E	N.77° 03'44" W.	267.25'
F	N.80° 14'36" W.	72.16'
G	N.87° 47'44" W.	70.48'
H	S.86° 35'36" W.	144.63'
I	S.85° 46'50" W.	98.83'
J	S.79° 57'08" W.	85.09'
K	S.71° 56'54" W.	93.31'
L	S.74° 45'08" W.	198.89'
M	S.86° 59'50" W.	91.30'
N	N.75° 22'18" W.	96.57'
O	N.65° 49'05" W.	92.37'
P	N.55° 30'43" W.	73.02'
Q	N.46° 11'22" W.	349.99'
R	N.59° 14'49" W.	163.64'
S	N.79° 43'30" W.	184.09'

- LEGEND
- IRON PIN FOUND
 - 5/8" X 30" REBAR SET WITH I.D. CAP
 - CENTERLINE OF ROAD
 - STONE FOUND
 - POINT

N.E. 1/4 SEC. 5 N.W. 1/4 SEC. 4



OFFICE COPY
NOT RECORDABLE