

BOWMAN & ASSOCIATES  
59 SECOND STREET  
FRAZEYSBURG, OHIO 43822  
PH./FAX (614) 828-2204

SURVEY DESCRIPTION  
FOR  
Carol Goff

AUDITORS PARCELS

#60-01-05-03-000 (ALL 51.094 ACRES)  
#60-10-04-07-000 (ALL 80.538 ACRES)

Situated in the Northwest Quarter of Section #4 and the Northeast Quarter of Section #5, T-13-N, R-12-W, Salt Creek Township, Muskingum County Ohio. Being the lands of Martha Roll as recorded in Deed Book 692 page 271 of the Muskingum County records and being described as follows:

Beginning at a point in the Northwest corner of section #4;

- thence, S.88°07'23"E. a distance of 1,452.00 feet along the South line of Perry Township to a found iron pin on the Northwest corner of the lands, now or formerly, owned by C. Lighthizer (550/053), passing a found iron pin at 646.03 feet;
- thence, S.03°32'42"W. a distance of 330.00 feet along said Lighthizer lands to a found iron pin;
- thence, S.88°07'23"E. a distance of 309.54 feet along said Lighthizer lands to a set iron pin on the West line of the lands, now or formerly, owned by J. Gormley (605/272);
- thence, S.43°52'37"W. a distance of 129.36 feet along said Gormley lands to a set iron pin;
- thence, S.06°22'23"E. a distance of 481.80 feet along said Gormley lands to a set iron pin;
- thence, S.40°07'23"E. a distance of 508.20 feet along said Gormley lands to a set iron pin;
- thence, S.04°33'12"E. a distance of 540.87 feet along said Gormley lands to a point at the Northeast corner of an existing bridge over the Little Salt Creek in the right of way of County Road 5 (Clay Pike), being the Northeast corner of the lands, now or formerly, owned by J. Gormley (1082/545), passing a set iron pin at 500.87 feet;
- thence, S.33°13'07"W. a distance of 180.52 feet through the right of way of said road to a point in the center;
- thence, S.45°14'57"W. a distance of 50.78 feet along said centerline to a point;
- thence, S.74°01'27"W. a distance of 53.85 feet along said centerline to a point;
- thence, N.81°23'41"W. a distance of 60.74 feet along said centerline to a point;
- thence, N.77°03'44"W. a distance of 267.25 feet along said centerline to a point;
- thence, N.80°14'36"W. a distance of 72.16 feet along said centerline to a point;
- thence, N.87°47'44"W. a distance of 70.48 feet along said centerline to a point;
- thence, S.86°35'36"W. a distance of 144.63 feet along said centerline to a point;
- thence, S.85°46'50"W. a distance of 98.83 feet along said centerline to a point;

continued

- thence, S.79°57'08"W. a distance of 85.09 feet along said centerline to a point;
- thence, S.71°56'54"W. a distance of 93.31 feet along said centerline to a point;
- thence, S.74°45'08"W. a distance of 198.69 feet along said centerline to a point;
- thence, N.86°59'50"W. a distance of 91.30 feet along said centerline to a point;
- thence, N.75°22'18"W. a distance of 96.57 feet along said centerline to a point;
- thence, N.65°49'05"W. a distance of 92.37 feet along said centerline to a point;
- thence, N.55°30'43"W. a distance of 73.02 feet along said centerline to a point;
- thence, N.46°23'22"W. a distance of 349.99 feet along said centerline to a point;
- thence, N.59°30'49"W. a distance of 163.64 feet along said centerline to a point;
- thence, N.79°43'30"W. a distance of 184.09 feet along said centerline to a point, passing the East line of section #5 at 164.29 feet;
- thence, N.89°54'50"W. a distance of 91.49 feet along said centerline to a point;
- thence, S.89°49'24"W. a distance of 475.21 feet along said centerline to a point;
- thence, S.88°04'57"W. a distance of 734.91 feet along said centerline to a point on the Southeast corner of the lands, now or formerly, owned by J. Norris (1058/171) referenced by a found iron pin bearing S.01°59'45"W. 30.00 feet;
- thence, N.01°59'45"E. a distance of 1,721.35 feet along the east line of said Norris land and the east line of the lands, now or formerly, owned by M. McCall (382/401) to a set iron pin on the South line of Perry Township;
- thence, S.88°07'23"E. a distance of 1,328.08 feet along said Township line to the point of beginning.

Excepting from the above described parcel is a 1.811 acre parcel situated in section #4 conveyed to the Trustees of the Salt Creek Baptist Church recorded in Deed Book 44 page 123 of the Muskingum County Deed records and being described as follows:

Commencing at a point in the Northwest corner of section #4; thence, S.88°07'23"E. a distance of 1,452.00 feet along the South line of Perry Township to a found iron pin on the Northwest corner of the lands, now or formerly, owned by C. Lighthizer (550/053), passing a found iron pin at 646.03 feet; thence, S.03°32'42"W. a distance of 330.00 feet along said Lighthizer lands to a found iron pin; thence, S.88°07'23"E. a distance of 309.54 feet along said Lighthizer lands to a set iron pin on the West line of the lands, now or formerly, owned by J. Gormley (605/272); thence, S.43°52'37"W. a distance of 129.36 feet along said Gormley lands to a set iron pin; thence, S.06°22'23"E. a distance of 481.80 feet along said Gormley lands to a set iron pin; thence, S.40°07'23"E. a distance of 508.20 feet along said Gormley lands to a set iron pin; thence, S.04°33'12"E. a distance of 540.87 feet along said Gormley lands to a point at the Northeast corner of an existing bridge over the Little Salt Creek in the right of way of County Road 5 (Clay Pike), being the Northeast corner of the lands, now or formerly, owned by J. Gormley (1082/545), passing a set iron pin at 500.87 feet; thence, S.33°13'07"W. a distance of 180.52 feet through the right of way of said road to a point in the center;

continued

thence, S.45°14'57"W. a distance of 50.78 feet along said centerline to a point; thence, S.74°01'27"W. a distance of 53.85 feet along said centerline to a point; thence, N.81°23'41"W. a distance of 60.74 feet along said centerline to a point; thence, N.01°14'06"E. a distance of 102.67 feet leaving said road and going through the lands of M. Roll (692/271) to a set iron pin BEING THE POINT OF BEGINNING;

thence, N.84°57'26"W. a distance of 489.06 feet to a set iron pin;  
thence, N.04°53'59"W. a distance of 104.28 feet to a set iron pin;  
thence, N.71°23'10"E. a distance of 270.60 feet to a set iron pin;  
thence, S.78°58'16"E. a distance of 147.84 feet to a set iron pin;  
thence, S.24°45'19"E. a distance of 225.72 feet to the point of beginning.

The above described exception contains 1.811 acres, more or less, and is subject to all legal easements and right of ways.

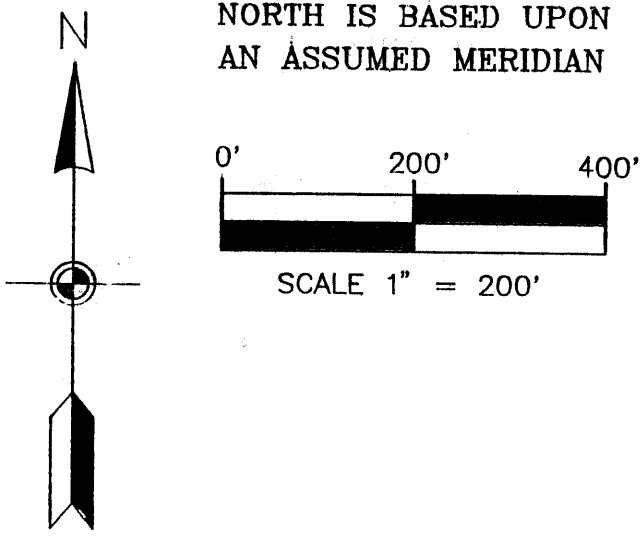
The above described parcel contains 131.632 acres (after exceptions), more or less, (80.538 acres in section #4 and 51.094 acres in section #5) and is subject to all legal easements and right of ways. All set iron pipes are 5/8" x 30" rebars with plastic I.D. caps. North is based an assumed meridian.

Description was prepared from an actual survey by Bowman & Associates, Stephen M. Bowman, P.S.#7135. June 22, 1995.

OFFICE COPY  
NOT RECORDABLE

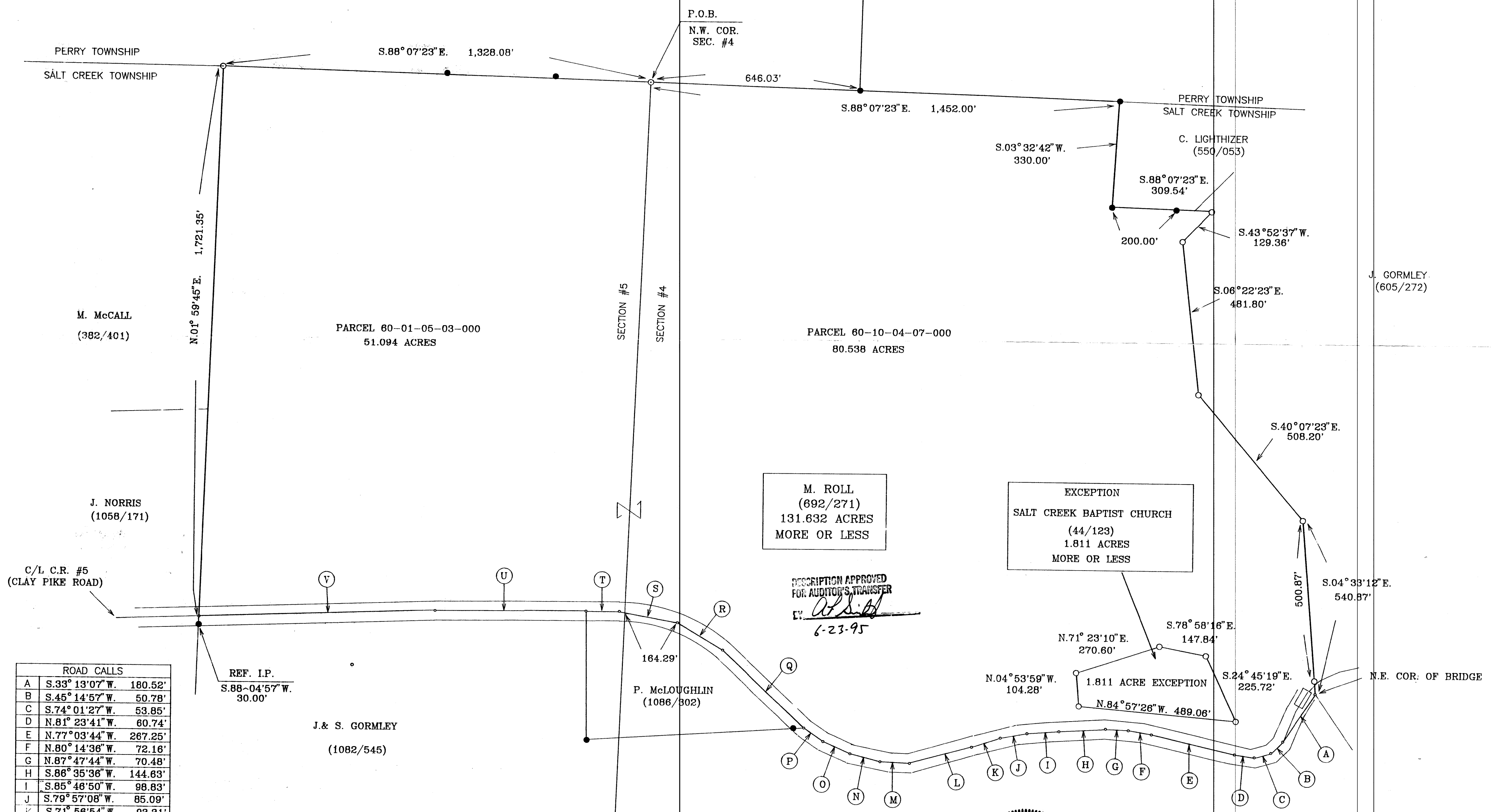
DESCRIPTION APPROVED  
FOR AUDITOR'S TRANSFER

BY *[Signature]*  
6-23-95



SURVEY PLAT FOR CAROL GOFF

SITUATED IN THE NORTHWEST QUARTER OF SECTION #4 AND IN THE NORTHEAST QUARTER OF SECTION #5, T-13, R-12, SALT CREEK TOWNSHIP, MUSKINGUM COUNTY, OHIO. BEING THE LANDS OF MARTHA ROLL AS CONVEYED IN DEED BOOK 692 PAGE 271 OF THE MUSKINGUM COUNTY DEED RECORDS.



ROAD CALLS

A	S.33° 13'07" W.	180.52'
B	S.45° 14'57" W.	50.78'
C	S.74° 01'27" W.	53.85'
D	N.81° 23'41" W.	60.74'
E	N.77° 03'44" W.	267.25'
F	N.80° 14'36" W.	72.16'
G	N.87° 47'44" W.	70.48'
H	S.86° 35'36" W.	144.83'
I	S.85° 46'50" W.	98.83'
J	S.79° 57'08" W.	85.09'
K	S.71° 56'54" W.	93.31'
L	S.74° 45'08" W.	198.69'
M	S.86° 59'50" W.	91.30'
N	N.75° 22'18" W.	96.57'
O	N.65° 49'05" W.	92.37'
P	N.56° 30'43" W.	73.02'
Q	N.46° 02'22" W.	349.99'
R	N.59° 04'49" W.	163.64'
S	N.79° 43'30" W.	184.09'

- LEGEND
- IRON PIN FOUND
  - 5/8" X 30" REBAR SET WITH I.D. CAP
  - CENTERLINE OF ROAD
  - STONE FOUND
  - POINT

N.E. 1/4 SEC. 5    N.W. 1/4 SEC. 4



OFFICE COPY NOT RECORDABLE