

FILFRID C. BAKER, Realtors  
1136 MAPLE AVENUE P. O. BOX 2117  
ZANESVILLE, OHIO 43701

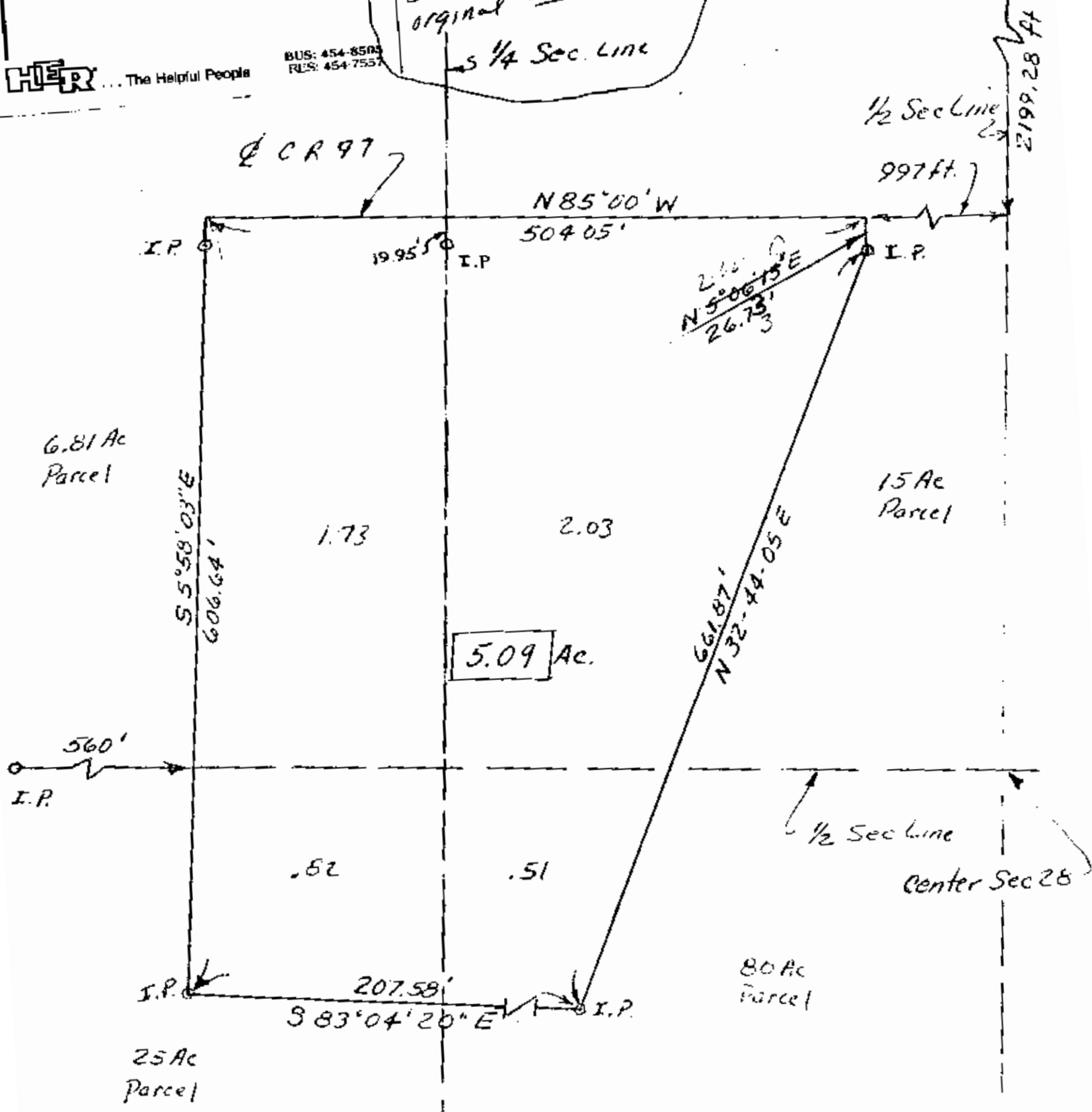
JIM MC CONNELL  
Associate

HER The Helpful People

BUS: 454-8503  
RES: 454-7557

Bill  
If this agrees with  
deed - I will have to  
look up my file for  
original sales.  
S 1/4 Sec. Line

60-80-28-16  
6200 SQ. FT. ~~ROAD~~ PA  
Stone  
NE Corner of  
NW Qtr Sec 28



Eugene + Evelyn Mock — to Humphrey  
Sec 28 Twp 13 Rang 12...

**OFFICE COPY  
NOT RECORDABLE**

John C. Payne  
177