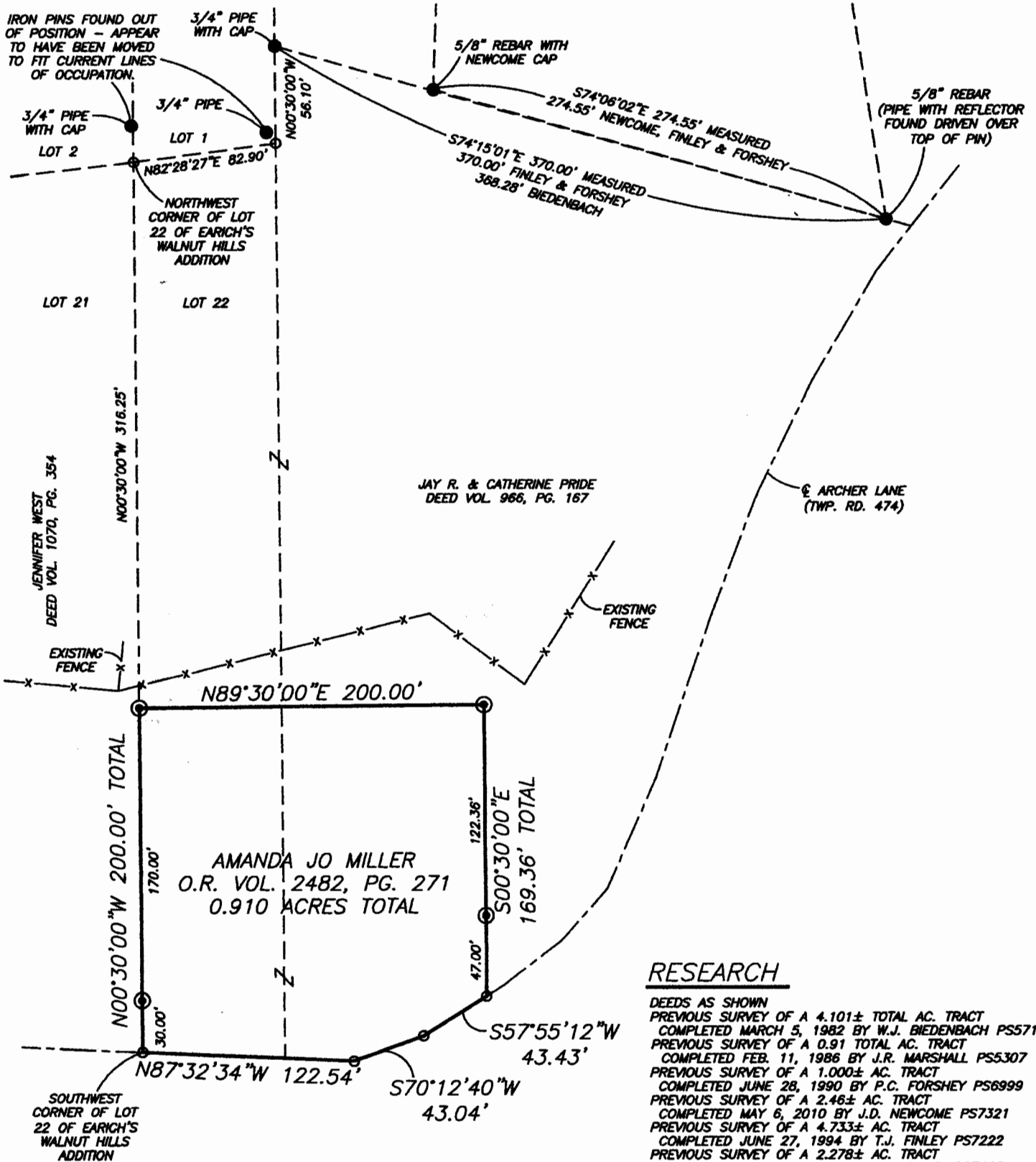


SKETCH OF SURVEY FOR AMANDA MILLER

AUDITORS PARCEL NUMBER
62-62-27-02-38-000
62-62-27-02-39-000

BEING A PART OF LOT 22 OF EARICH'S WALNUT HILLS ADDITION AS RECORDED IN PLAT BOOK 3, PAGE 10 OF THE MUSKINGUM COUNTY PLAT RECORDS, AND BEING A PART OF THE NORTHWEST QUARTER OF SECTION 11, TOWNSHIP 16, RANGE 14, OF THE CONGRESS LANDS EAST OF THE SCIOTO RIVER, SPRINGFIELD TOWNSHIP, MUSKINGUM COUNTY, OHIO.

BEARINGS ARE BASED ON THE NORTH LINE OF A PREVIOUS SURVEY OF 4.101 MORE OR LESS TOTAL ACRES TRACT COMPLETED MARCH 5th 1982, BY W.J. BIEDENBACH PS5718.

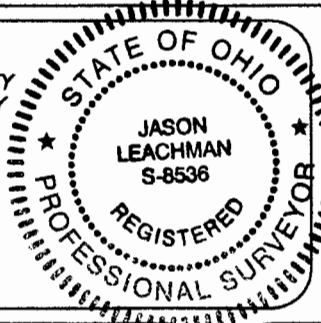


RESEARCH

DEEDS AS SHOWN
PREVIOUS SURVEY OF A 4.101± TOTAL AC. TRACT COMPLETED MARCH 5, 1982 BY W.J. BIEDENBACH PS5718
PREVIOUS SURVEY OF A 0.91 TOTAL AC. TRACT COMPLETED FEB. 11, 1986 BY J.R. MARSHALL PS5307
PREVIOUS SURVEY OF A 1.000± AC. TRACT COMPLETED JUNE 28, 1990 BY P.C. FORSHEY PS6999
PREVIOUS SURVEY OF A 2.46± AC. TRACT COMPLETED MAY 6, 2010 BY J.D. NEWCOME PS7321
PREVIOUS SURVEY OF A 4.733± AC. TRACT COMPLETED JUNE 27, 1994 BY T.J. FINLEY PS7222
PREVIOUS SURVEY OF A 2.278± AC. TRACT COMPLETED JUNE 28, 1994 BY T.J. FINLEY PS7222
PREVIOUS SURVEY OF A 0.196 AC. TRACT COMPLETED SEPT. 12, 1990 BY R.S. JOHNSON PS6791
PREVIOUS SURVEY OF A 0.61 AC. TRACT COMPLETED AUG. 29, 2005 BY C.R. HARKNESS PS6885

I HEREBY CERTIFY TO THE BEST OF MY KNOWLEDGE AND BELIEF THE ABOVE PLAT AND SURVEY TO BE CORRECT AS PREPARED BY ME, THIS 26th DAY OF FEBRUARY, 2014, FROM A FIELD SURVEY COMPLETED THE 26th DAY OF FEBRUARY, 2014.

OFFICE COPY NOT RECORDABLE



LEGEND

- EXISTING IRON PIN
- ⊙ IRON PIN SET (5/8" REBAR W/CAP)
- ANGLE POINTS

SCALE 1"=80'
0 40 80 160

BASELINE SURVEYING, INC.

3010 EAST PIKE, ZANESVILLE, OHIO 43701
phone: 740-453-4850, fax: 740-450-1000, email: BEI@rohio.com

DRAWN BY: JWL	DATE: 02-26-14	SCALE: 1"=80'
CHECKED BY: MDN	JOB NO: 5690	DRAWING NO: Z:\5690\5690.dwg