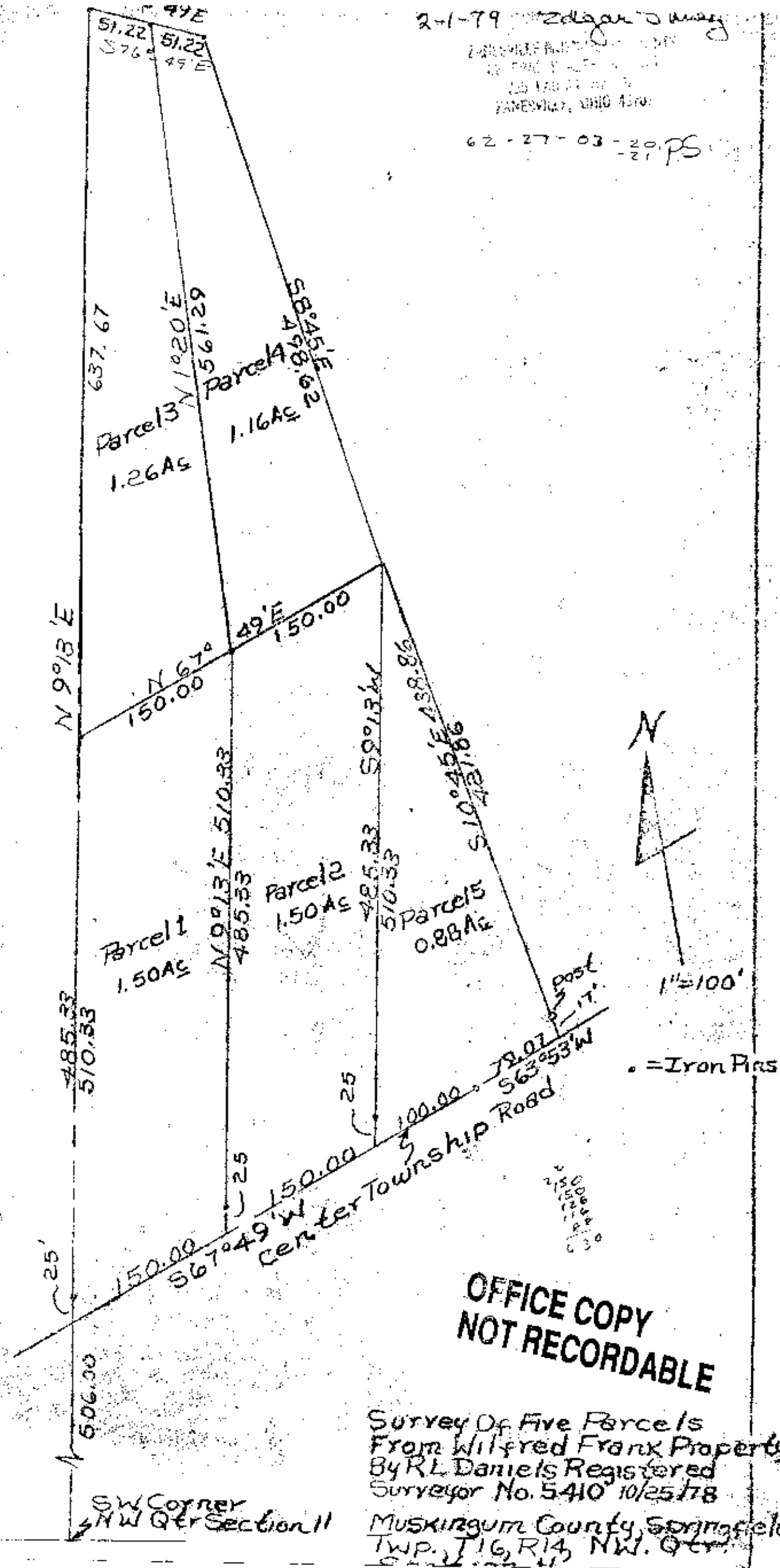


2-1-79
 62-27-03-20 PS



**OFFICE COPY
 NOT RECORDABLE**

Survey Of Five Parcels
 From Wilfred Frank Property
 By RL Daniels Registered
 Surveyor No. 5410 10/25/78
 MUSKINGUM County, Springfield
 TWP. T16, R14, NW. Qtr.

SW Corner
 NW Qtr Section 11