

12-13-93

Situated in the State of Ohio, County of Washington, Township of Springfield:

Being a part of the Northwest Quarter of Section Eleven (11) Township Clinton (1st), Range Fourth (1st) of the Congress Lands east of the Scioto River and part of parcel one and parcel two of pro rata owned by Land Investment Designs, Inc. and Recorded in Book 436, Page 135 of the Washington County Deed Records bounded and described as follows:

Commencing at an iron pin found at the southeast corner of said northwest quarter of section 11; thence N 3 15 15 E (the bear of bearings for this description is true north by an observation of the sun) along the east line of said northwest quarter, 1095.75 feet to an iron pin set at the true place of beginning; said pin bears S 66 50 17 E 17.4 feet to an iron pin set at the southeast corner of Lot 125 of Deers Addition (Dist Book 2, pp. 112); thence S 79 40 41 W 626.74 feet to an iron pin set; thence S 3 15 15 E 124.41 feet to an iron pipe found at the southeast corner of a 1.36 acre parcel owned by David and Helen Flippo (Dist 117 pg 54); thence N 27 36 15 E along the easterly line of said 1.91 acre parcel 379.22 feet to an iron pin found; thence N 52 12 15 E along the southeasterly line of said parcel 149.34 feet to an iron pipe found; thence S 16 25 15 E along the southerly line of a 0.97 acre parcel owned by Sam Donald and Susan Philipps (Vol. 898, Pg. 132) 106.40 feet to an iron pin found; thence S 25 16 54 W along the east line of said parcel 130.10 feet to a point in the center of Archer Lane and passing through an iron pin found at 155.12 feet; thence N 01 57 50 E along the center of said road 157.27 feet to an iron pin found on the east line of said northwest quarter of section 11; thence S 3 15 15 W along the east line of said northwest quarter of section 11 and along the west line of a 2.28 acre parcel owned by Ray Durant (Vol. 104 pg. 91) and the west line of aforesaid Deers Addition (2 C. 2, pg. 113) a distance of 1250.46 feet to the true place of beginning containing twelve and twenty eight hundredths (12.288) acres of which 4.43 acres is part of parcel two and part of Quarters Parcel one and 10.76 acres is part of parcel one and part of Quarters Parcel one and part of section 11.

This description was written December 7, 1993 by Richard H. Evans Registered Surveyor No. 5712

**OFFICE COPY
NOT RECORDABLE**

**DESCRIPTION APPROVED
FOR AUDITORS TRANSFER**

BY RLS AB

12-13-93

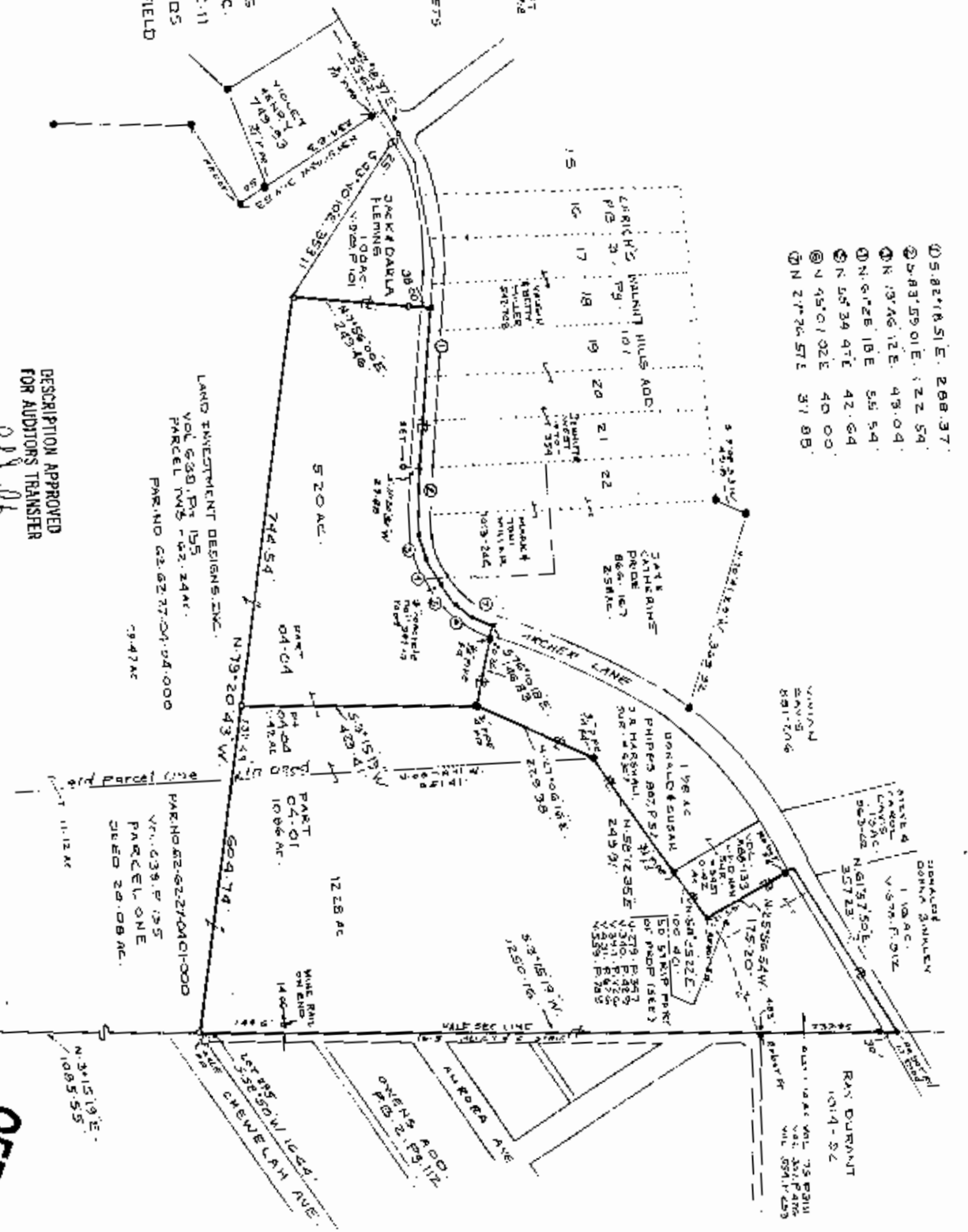
BASE ON BEARINGS TRUE NORTH
BY AN OBSERVATION OF THE SUN

- 180° FULL CB
- 3/4 & 3/4 AFFERED 1/2 MON PROTECT
- REDAR POINT
- AXLE POINT
- WALL (GENERATE) SET
- WALL (GENERATE) SET
- HOLE ROAD POINT
- HOLE ROAD POINT
- HOLE ROAD POINT
- HOLE ROAD POINT
- HOLE ROAD POINT
- HOLE ROAD POINT
- HOLE ROAD POINT
- HOLE ROAD POINT
- HOLE ROAD POINT
- HOLE ROAD POINT
- HOLE ROAD POINT
- HOLE ROAD POINT
- HOLE ROAD POINT
- HOLE ROAD POINT
- HOLE ROAD POINT
- HOLE ROAD POINT
- HOLE ROAD POINT
- HOLE ROAD POINT
- HOLE ROAD POINT
- HOLE ROAD POINT
- HOLE ROAD POINT
- HOLE ROAD POINT
- HOLE ROAD POINT
- HOLE ROAD POINT
- HOLE ROAD POINT
- HOLE ROAD POINT
- HOLE ROAD POINT
- HOLE ROAD POINT
- HOLE ROAD POINT
- HOLE ROAD POINT
- HOLE ROAD POINT
- HOLE ROAD POINT
- HOLE ROAD POINT
- HOLE ROAD POINT
- HOLE ROAD POINT
- HOLE ROAD POINT
- HOLE ROAD POINT
- HOLE ROAD POINT
- HOLE ROAD POINT
- HOLE ROAD POINT
- HOLE ROAD POINT
- HOLE ROAD POINT
- HOLE ROAD POINT
- HOLE ROAD POINT
- HOLE ROAD POINT
- HOLE ROAD POINT
- HOLE ROAD POINT
- HOLE ROAD POINT
- HOLE ROAD POINT
- HOLE ROAD POINT
- HOLE ROAD POINT
- HOLE ROAD POINT
- HOLE ROAD POINT
- HOLE ROAD POINT
- HOLE ROAD POINT
- HOLE ROAD POINT
- HOLE ROAD POINT
- HOLE ROAD POINT
- HOLE ROAD POINT
- HOLE ROAD POINT
- HOLE ROAD POINT
- HOLE ROAD POINT
- HOLE ROAD POINT
- HOLE ROAD POINT
- HOLE ROAD POINT
- HOLE ROAD POINT
- HOLE ROAD POINT
- HOLE ROAD POINT
- HOLE ROAD POINT
- HOLE ROAD POINT
- HOLE ROAD POINT
- HOLE ROAD POINT
- HOLE ROAD POINT
- HOLE ROAD POINT
- HOLE ROAD POINT
- HOLE ROAD POINT
- HOLE ROAD POINT
- HOLE ROAD POINT
- HOLE ROAD POINT
- HOLE ROAD POINT
- HOLE ROAD POINT
- HOLE ROAD POINT
- HOLE ROAD POINT
- HOLE ROAD POINT
- HOLE ROAD POINT
- HOLE ROAD POINT
- HOLE ROAD POINT
- HOLE ROAD POINT
- HOLE ROAD POINT
- HOLE ROAD POINT
- HOLE ROAD POINT
- HOLE ROAD POINT
- HOLE ROAD POINT
- HOLE ROAD POINT
- HOLE ROAD POINT
- HOLE ROAD POINT
- HOLE ROAD POINT
- HOLE ROAD POINT
- HOLE ROAD POINT
- HOLE ROAD POINT
- HOLE ROAD POINT
- HOLE ROAD POINT
- HOLE ROAD POINT
- HOLE ROAD POINT
- HOLE ROAD POINT
- HOLE ROAD POINT
- HOLE ROAD POINT
- HOLE ROAD POINT
- HOLE ROAD POINT
- HOLE ROAD POINT
- HOLE ROAD POINT
- HOLE ROAD POINT
- HOLE ROAD POINT
- HOLE ROAD POINT
- HOLE ROAD POINT
- HOLE ROAD POINT
- HOLE ROAD POINT
- HOLE ROAD POINT
- HOLE ROAD POINT
- HOLE ROAD POINT
- HOLE ROAD POINT
- HOLE ROAD POINT
- HOLE ROAD POINT
- HOLE ROAD POINT
- HOLE ROAD POINT
- HOLE ROAD POINT
- HOLE ROAD POINT
- HOLE ROAD POINT
- HOLE ROAD POINT
- HOLE ROAD POINT
- HOLE ROAD POINT
- HOLE ROAD POINT
- HOLE ROAD POINT
- HOLE ROAD POINT
- HOLE ROAD POINT
- HOLE ROAD POINT
- HOLE ROAD POINT
- HOLE ROAD POINT
- HOLE ROAD POINT
- HOLE ROAD POINT
- HOLE ROAD POINT
- HOLE ROAD POINT
- HOLE ROAD POINT
- HOLE ROAD POINT
- HOLE ROAD POINT
- HOLE ROAD POINT
- HOLE ROAD POINT
- HOLE ROAD POINT
- HOLE ROAD POINT
- HOLE ROAD POINT
- HOLE ROAD POINT
- HOLE ROAD POINT
200



MAP SHOWING SURVEY OF 2 PARCELS
FOR LAND INVESTMENT DESIGNS, INC.
VOL. 638, P. 155 IN THE N.W. QTR. SEC. 11
TWP. 16, R. 14 OF THE CONGRESS LANDS
EAST OF THE SCIOTO RIVER, SPRINGFIELD
TWP. MISSISSIPPI COUNTY, OHIO

- SPRINGFIELD TWP. TAX SHEETS
- 62-27 62-28 62-29
 - AERIAL PHOTO
 - H B G O
 - ZANESVILLE WEST
 - PLAT BOOK 2, PG 101
 - PLAT BOOK 2, PG 102
 - 5-R. TRASK-HALL SURVEY 75307
 - 2-W. STARR-UBERLY SURVEY 62728
 - 1-C. BIRKBECK SURVEY 5451
 - 2-R. BRANCK SURVEY 6772



- ① 5.827651 E. 208.37
- ② 5.8759 01 E. 122.54
- ③ N. 37° 46' 12" E. 43.04
- ④ N. 67° 28' 10" E. 55.54
- ⑤ N. 57° 39' 47" E. 42.64
- ⑥ N. 45° 01' 02" E. 40.00
- ⑦ N. 27° 26' 57" E. 37.88

DESCRIPTION APPROVED
FOR AUDITORS TRANSFER

BY 12-13-97

12.28 ac.
5.20 ac.

OFFICE COPY
NOT RECORDBLE

MAX GRAY'S
REGISTERED SURVEYOR 5792
275 KENNEDY BLVD.
CHILlicothe, OHIO 45830
DEC. 7, 1997