

SITUATED IN

The State of Ohio, County of Muskingum, Township of Union, and being part of the Southwest Quarter of Section 4, Township 1, Range 5.

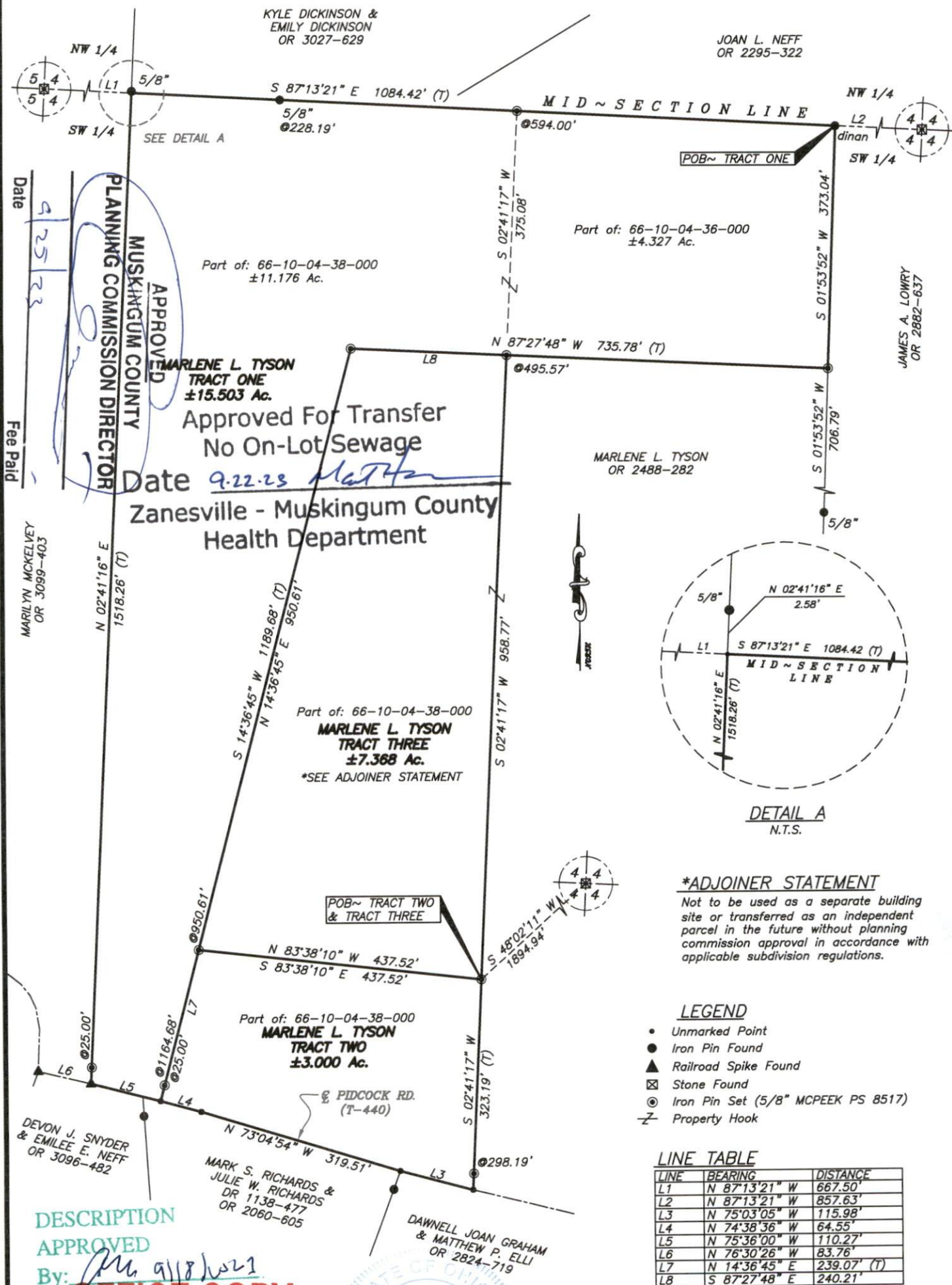
BASIS OF BEARING

Bearings are based on State Plane Grid Coordinates, NAD83, Ohio South, per GPS Observation.

REFERENCES

* As Noted on Plat
www.muskingumcountyauditor.org
www.mceo.org
http://recorder.muskingumcounty.org

Survey Split



DETAIL A
N.T.S.

*ADJOINER STATEMENT

Not to be used as a separate building site or transferred as an independent parcel in the future without planning commission approval in accordance with applicable subdivision regulations.

LEGEND

- Unmarked Point
- Iron Pin Found
- ▲ Railroad Spike Found
- ⊠ Stone Found
- ⊙ Iron Pin Set (5/8" MCPEEK PS 8517)
- Z- Property Hook

LINE TABLE

LINE	BEARING	DISTANCE
L1	N 87°13'21" W	667.50'
L2	N 87°13'21" W	857.63'
L3	N 75°03'05" W	115.98'
L4	N 74°38'36" W	64.55'
L5	N 75°36'00" W	110.27'
L6	N 76°30'26" W	83.76'
L7	N 14°36'45" E	239.07' (T)
L8	S 87°27'48" E	240.21'

DESCRIPTION

APPROVED

By: *[Signature]* 9/18/21

OFFICE COPY

NOT RECORDABLE

Brian Kelly McPeck
Reg. Surveyor No. 8517

This plat was prepared by McPeck Land Surveying, LLC in accordance with Chapter 4733-37 of the Administrative Code, and is intended to be used for the legal transfer of the property described and does not intend to describe all or any easements of record, nor encroachments unless otherwise intended.

Graphic Scale



(IN FEET)

1 inch = 150 ft.

MCPEEK LAND SURVEYING
 www.mcpeeklandsurveying.com
 email: brian@mcpeeklandsurveying.com
 1705 East Pike, Zanesville, OH 43701 • 740.704.6073

reduced copy, not to scale, Larger copy available in the Muskingum County Engineer's Map Dept.