

SITUATED IN

The State of Ohio, County of Muskingum,
Village of New Concord, NW Qtr. of Section 1,
Township 1, Range 5, also being part of the lands
now owned by SMZ Development Company, LLC.
(OR 2753-678)

BASIS OF BEARING

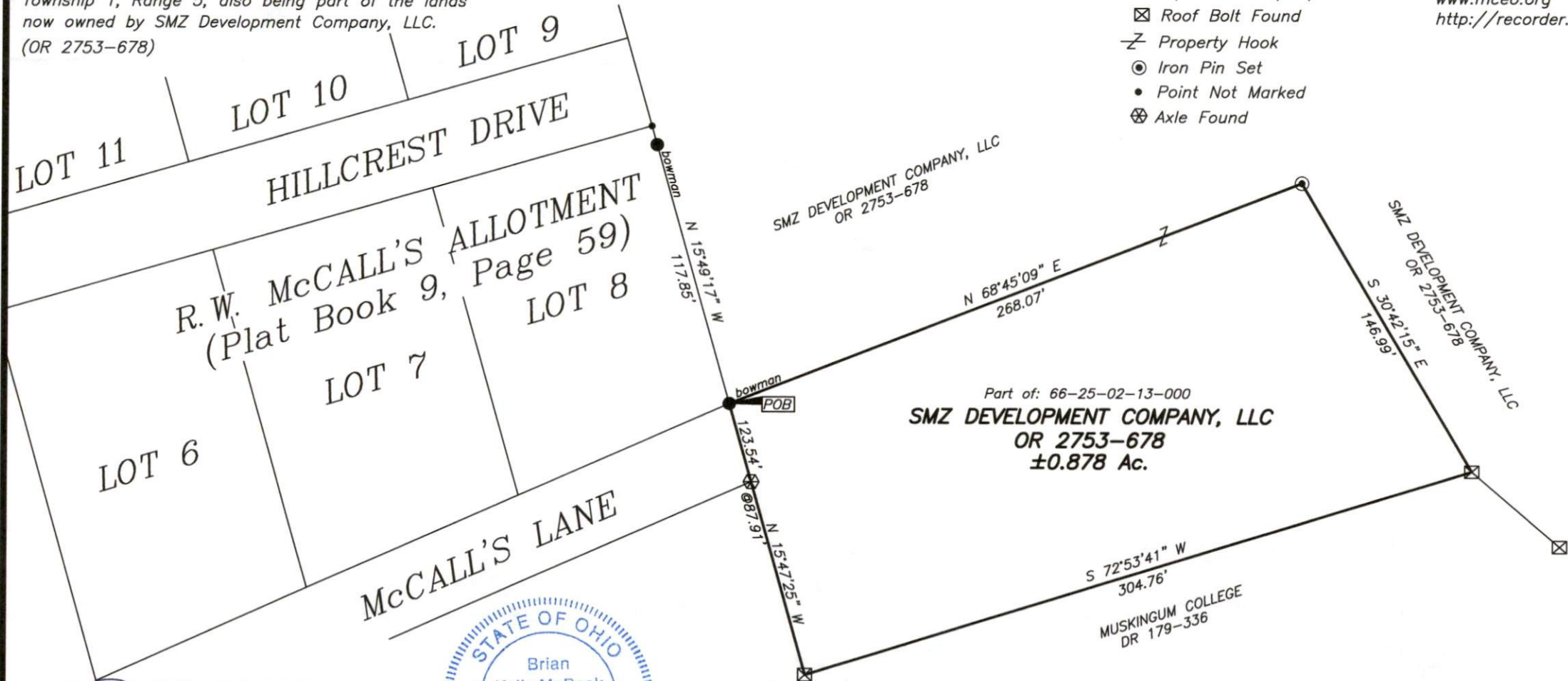
Bearings are based on State Plane Grid Coordinates,
NAD83, Ohio South, per GPS Observation.

LEGEND

- Iron Pin Found
- Pipe Found w/cap
- ⊠ Roof Bolt Found
- Z- Property Hook
- Iron Pin Set
- Point Not Marked
- ⊗ Axle Found

REFERENCES

* As Noted on Plat
www.muskingumcountyauditor.org
www.mceo.org
<http://recorder.muskingumcounty.org>



OFFICE COPY
NOT RECORDABLE

Brian Kelly McPeck
Reg. Surveyor No. 8517

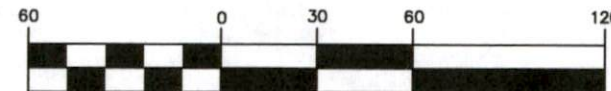
6/13/22
Date



DESCRIPTION
APPROVED

By: DMS 6/16/2022

GRAPHIC SCALE



(IN FEET)

1 inch = 60 ft.



www.mcpeeklandsurveying.com
email: brian@mcpeeklandsurveying.com
340 Robin Hood Ln., * Zanesville, Oh 43701 * 740.704.6073