

LINE No	BEARING	DISTANCE	LINE No	BEARING	DISTANCE
L1	N. 42° 06' 26" E.	129.46 FT.	L8	S. 58° 16' 03" E.	24.51 FT.
L2	N. 23° 16' 24" E.	15.87 FT.	L9	S. 87° 31' 00" E.	152.50 FT.
L3	N. 79° 35' 41" E.	117.00 FT.	L10	N. 83° 06' 24" E.	31.05 FT.
L4	S. 50° 54' 46" E.	155.00 FT.	L11	N. 83° 06' 24" E.	105.98 FT.
L5	S. 84° 05' 10" W.	2.37 FT.	L12	S. 88° 44' 06" E.	158.00 FT.
L6	S. 84° 05' 10" W.	7.39 FT.			
L7	S. 38° 32' 18" E.	188.94 FT.			

**LEGEND**

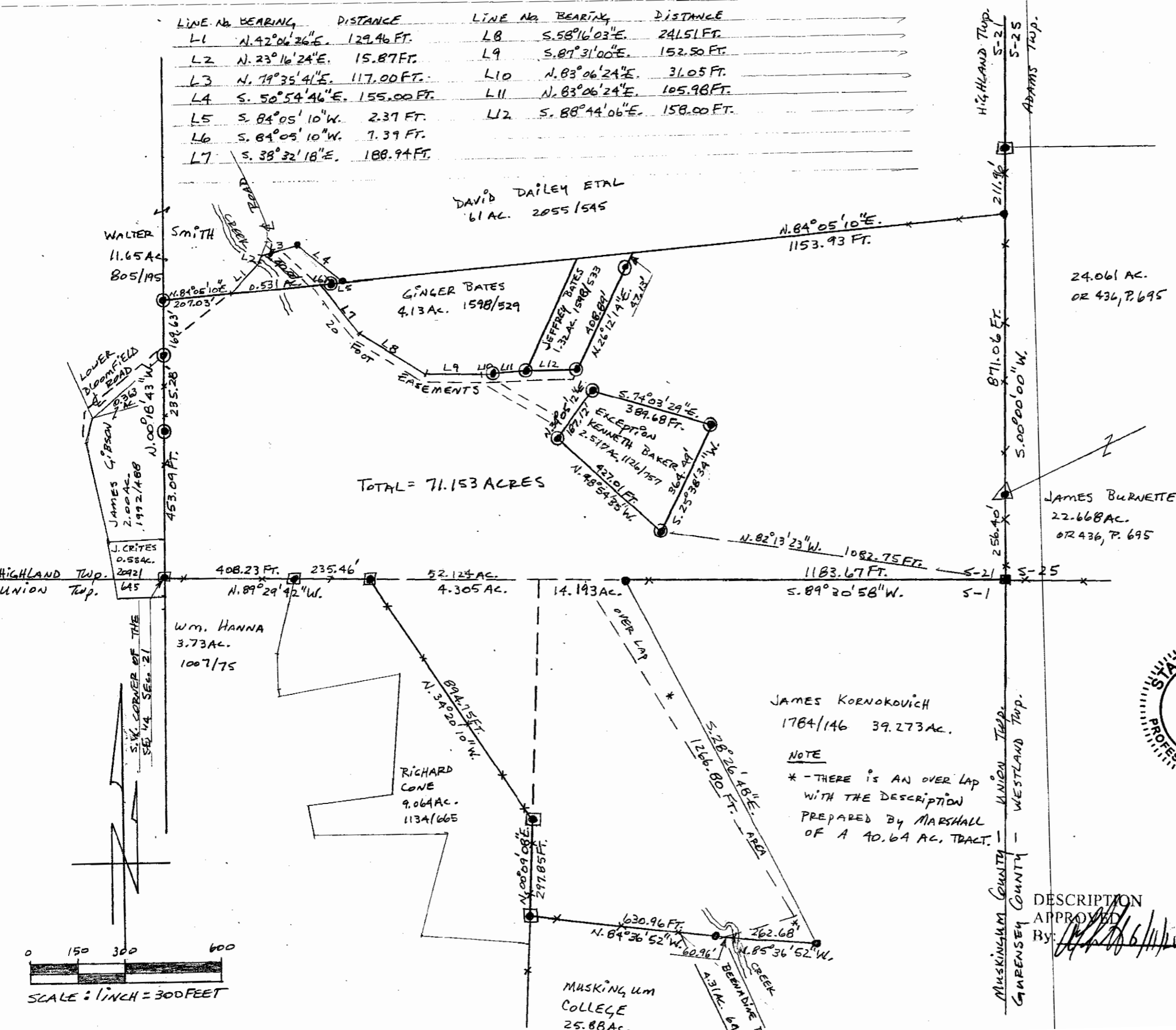
- - CORNER STONE FOUND
- - IRON PINS FOUND
- ⊠ - IRON PINS FOUND CAPPED "SPILKER 5862"
- △ - IRON PIN FOUND CAPPED "SCHELL 731A"
- - IRON PINS SET ARE ONE HALF INCH REBAR 30 INCHES LONG, WITH IDENTIFICATION CAPS "JGE 6410"
- \* - EXISTING FENCE LINE

- THE BEARINGS FOR THIS SURVEY ARE FOR ANGLE CALCULATIONS ONLY AND ARE BASED ON THE EAST LINE OF SECTION NO. 21 AS AN ASSUMED BEARING OF SOUTH 00° 00' 00" WEST

**DATA REFERENCES**

TAX MAPS, DEEDS OF RECORD, PLATS

PLAT BY DINAN OF 4.13 AC. DATED 5/16/01.  
 PLAT BY MARSHALL OF 138.36 AC. DATED 4/19/82.  
 PLAT BY SPILKER OF 9.06 AC. DATED 1/31/85.  
 PLAT BY DINAN OF 2.52 AC. DATED 7/22/96.  
 PLAT BY EPPLEY OF 11.65 AC. DATED 12/78.  
 PLAT BY SPILKER OF 58.12 AC. DATED 2/24/05.  
 PLAT BY DINAN OF 1.32 AC. DATED 5/16/01.



**STATE OF OHIO**  
 JOHN G. EPPLEY  
 6410  
 REGISTERED PROFESSIONAL SURVEYOR

**OFFICE COPY NOT RECORDABLE**

6410  
 G. Eppley  
 REG. SUR. No.

**NOTE**

\* - THERE IS AN OVER LAP WITH THE DESCRIPTION PREPARED BY MARSHALL OF A 40.64 AC. TRACT.

DESCRIPTION APPROVED By: *[Signature]* 6/11/2008

BEING A PARCEL OF LAND LOCATED IN S-21, T-2, R-5, HIGHLAND TWP. AND S-1, T-1, R-5, UNION TWP., MUSKINGUM COUNTY, OHIO.  
 BEING THE ALL OF THE EDNA I. FITZGERALD PROPERTY  
 REFERENCE - VOL. 1726, P. 100  
 CONTAINING - 71.153 ACRES  
 SCALE: 1 INCH = 300 FEET  
 DATE - MAY 2008

