

BINCKLEY LAND SURVEYING

6375 WINDSONG WAY NASHPORT OHIO 43830
 PHONE (740) 455-3736 FAX (740) 455-9149

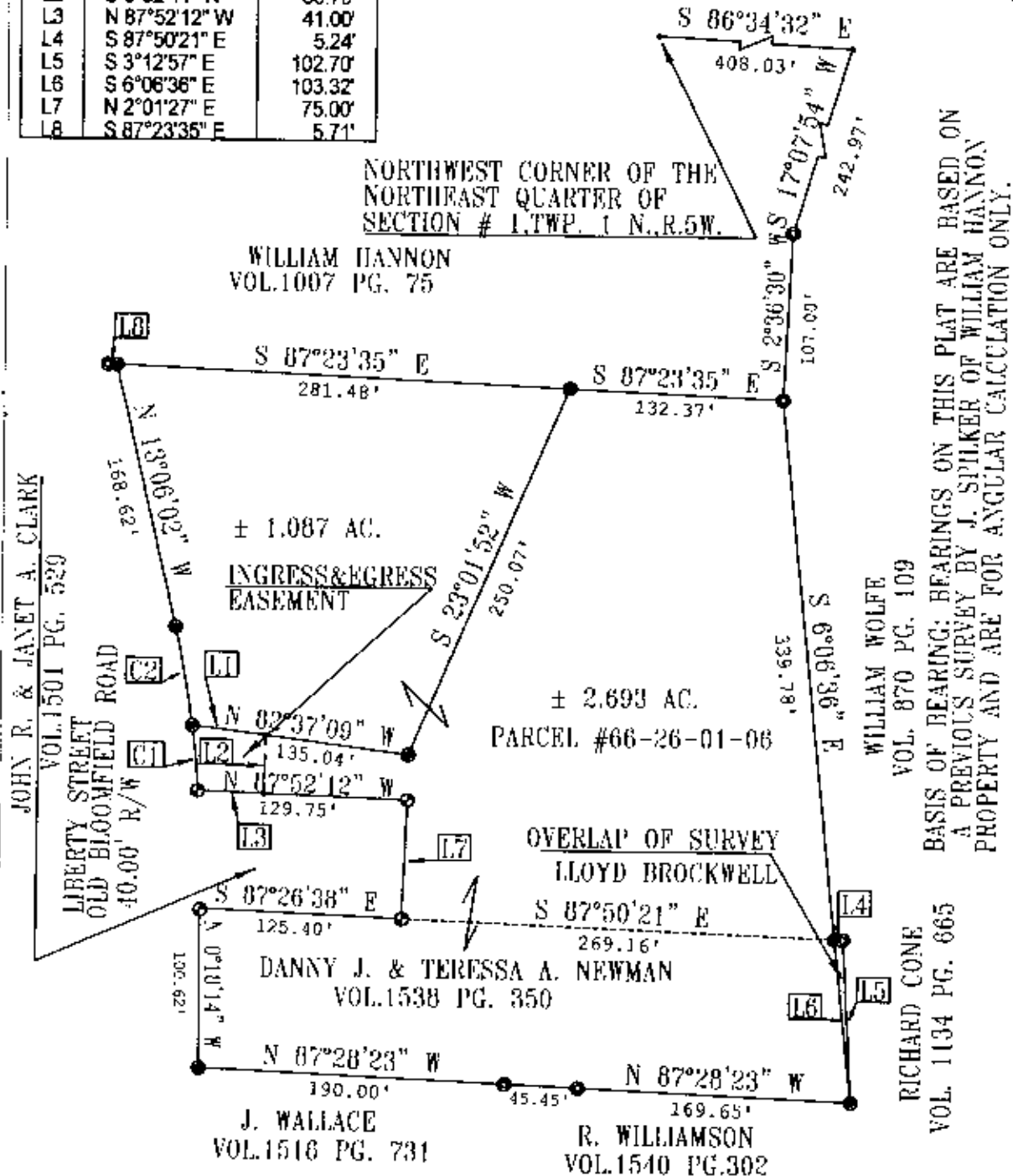
SCALE 1"=100'

100 75 50 25 0 100

SITUATE IN THE STATE OF OHIO, COUNTY OF MUSKINGUM, VILLAGE OF NEW CONCORD, AND BEING PART OF THE NORTHEAST QUARTER AND THE NORTHWEST QUARTER OF SECTION # 1, TWP. 1 N., R. 5 W., AND PART OF PARCEL # 66-26-01-06, WHICH WAS LAST CONVEYED TO DANNY J. AND TERESA A. NEWMAN IN VOLUME 1538, PAGE 350 OF MUSKINGUM COUNTY RECORDS.

LINE DATA		
Id	Bearing	Distance
L1	N 82°37'09" W	45.88'
L2	S 0°32'44" W	36.79'
L3	N 87°52'12" W	41.00'
L4	S 87°50'21" E	5.24'
L5	S 3°12'57" E	102.70'
L6	S 6°06'36" E	103.32'
L7	N 2°01'27" E	75.00'
L8	S 87°23'35" E	5.71'

CURVE DATA				
Id	Radius	Arc Length	Chord	Ch Bear
C1	651.41'	41.38'	41.37'	N 5°47'34" W
C2	651.41'	62.40'	62.37'	N 10°21'23" W



BASIS OF BEARING: BEARINGS ON THIS PLAT ARE BASED ON A PREVIOUS SURVEY BY J. SPILKER OF WILLIAM HANNON PROPERTY AND ARE FOR ANGULAR CALCULATION ONLY.

REFERENCES: TAX MAPS, DEEDS OF RECORD, PREVIOUS SURVEYS BY J. SPILKER DATED 9-14-1989, 4-20-1988, AND 1-31-1985, PARNELL & ASSOC. DATED 8-1983, AND LLOYD BROCKWELL DATED 7-26-1979. PLAT OF SUNRISE SUBDIVISION P.B. #11, PG. #1

I HEREBY CERTIFY THIS PLAT TO BE CORRECT TO THE BEST OF MY KNOWLEDGE AND BELIEF, AND REPRESENTS AN ACTUAL SURVEY COMPLETED BY BINCKLEY LAND SURVEYING ON AUGUST 2ND, 2001.

OFFICE COPY NOT RECORDABLE

DESCRIPTION APPROVED FOR AUDITOR'S TRANSFER BY *[Signature]* 8-30-2001

DONALD E. BINCKLEY II P.S. # 7000 DATE