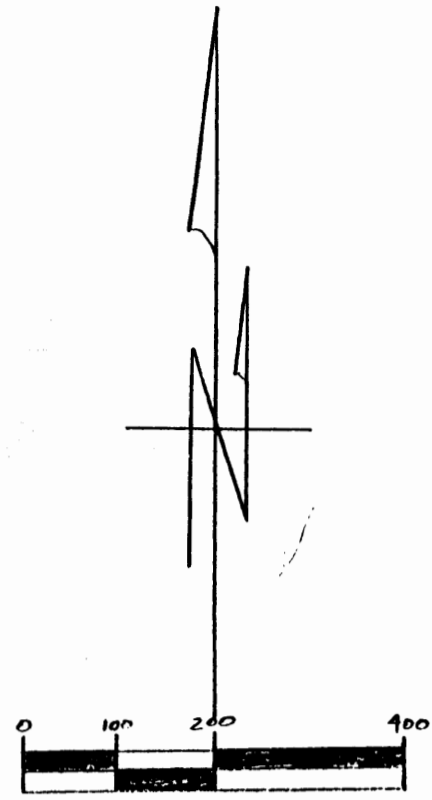


HIGHLAND TWP. SECTION 21 ADAMS TOWNSHIP  
 UNION TWP. SECTION 1 SECOND QUARTER WESTLAND TOWNSHIP

DALE FITZGERALD ETAL  
 146.10 AC.  
 3/9/755

DATA REFERENCES

TAX MAPS, USGS TOPO MAP,  
 DEEDS OF RECORD  
 MUSKINGUM COUNTY  
 VOL. 872, P. 191 VOL. 1126, P. 757  
 SURVEY BY L. PETER DINAN 7/24/96  
 GUERNSEY COUNTY  
 VOL. 349, P. 755 VOL. 137, P. 1049  
 VOL. 1, P. 647 VOL. 43, P. 901  
 SURVEY BY T.J. FINLEY 8/1/96  
 PLANS DONE BY R.D. ZANDE  
 & ASSOCIATES LIMITED



DALE FITZGERALD ETAL  
 40.64 AC.  
 872/190  
 PARCEL No.-66-26-01-49 (PT.)

DESCRIPTION APPROVED  
 FOR AUDITORS TRANSFER  
 BY *[Signature]*  
 4-29-97  
 1.367 ac. in  
 Muskingum Co.

NOTE:  
 --- EXISTING LIMITS OF SOLID WASTE  
 PLACEMENT AS PER MAPPING BY R.D.  
 ZANDE & ASSOCIATES, LIMITED AND  
 AS PER DRAWING FILED IN VOLUME  
 1, PAGE 647 OF DEED RECORDS,  
 GUERNSEY COUNTY RECORDERS OFFICE

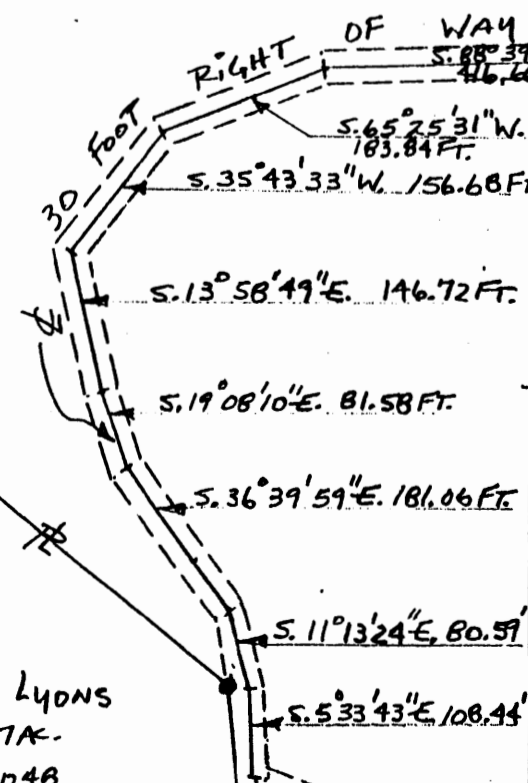
TOTAL = 33.094 AC.

LEGEND

- - CORNER STONE FOUND
- - IRON PINS FOUND
- △ - IRON PIN FOUND CAPPED (FINLEY 5-7222).
- - PROPERTY LINE
- - IRON PINS SET ARE ONE HALF INCH REBAR 30 INCHES LONG WITH IDENTIFICATION CAPS (JGE 6410).
- THE BEARINGS FOR THIS SURVEY ARE BASED ON THE EAST LINE OF SECTION No. 1, UNION TWP., MUSKINGUM COUNTY AS S. 00° 00' 00" E.
- + MW3 - MONITORING WELL NO. 3
- + MW2 - MONITORING WELL NO. 2

MUSKINGUM COUNTY - UNION TOWNSHIP  
 GUERNSEY COUNTY - WESTLAND TOWNSHIP

LEE LYONS  
 6.087 AC.  
 137/1048



OFFICE COPY  
 NOT RECORDABLE  
*[Signature]*  
 JOHN G. EPPLEY  
 6410 REG. SUR. No.



BEING A PARCEL OF LAND LOCATED IN THE SECOND QUARTER OF TOWNSHIP 1, R-4, WESTLAND TWP., GUERNSEY COUNTY, AND SECTION 1, T-1, R-5, UNION TWP., MUSKINGUM COUNTY, BEING A PART OF THE DALE FITZGERALD ETAL PROPERTY 349/755 GUERNSEY COUNTY REFERENCES: MUSKINGUM COUNTY-872/191 SCALE: 1 INCH = 200 FEET DATE - NOVEMBER, 1996