

- ~ Existing Stone
- ▲ ~ Existing Axle
- ✱ ~ Existing Iron Pin (3/8" rebar)
- ~ Existing Iron Pin (3/4" pipe)
- ⊙ ~ Iron Pin Set (3/8" x 30" rebar w/ plastic id. cap)

Research

Vol. 965	Pg. 248
Vol. 676	Pg. 199
Vol. 549	Pg. 858
Vol. 719	Pg. 348
Vol. 830	Pg. 331
Vol. 659	Pg. 120
Vol. 396	Pg. 214
Vol. 464	Pg. 351
Vol. 851	Pg. 88
Vol. 771	Pg. 27
Vol. 1040	Pg. 476
Vol. 1034	Pg. 228

Muskingum County Tax Map

Bearings are based on the previous survey of 1841, as recorded in Plat # 2, Range 7, Washington Township, Muskingum County, Ohio, recorded in Deed Volume 659, Page 120.

Being a part of Quarter Township 4, Township 1, Range 7, of the United States Military Lands, Washington Township, Muskingum County, Ohio.

I hereby certify to the best of my knowledge and belief the above plat and survey to be as prepared by me, this 7th day of August 1991.

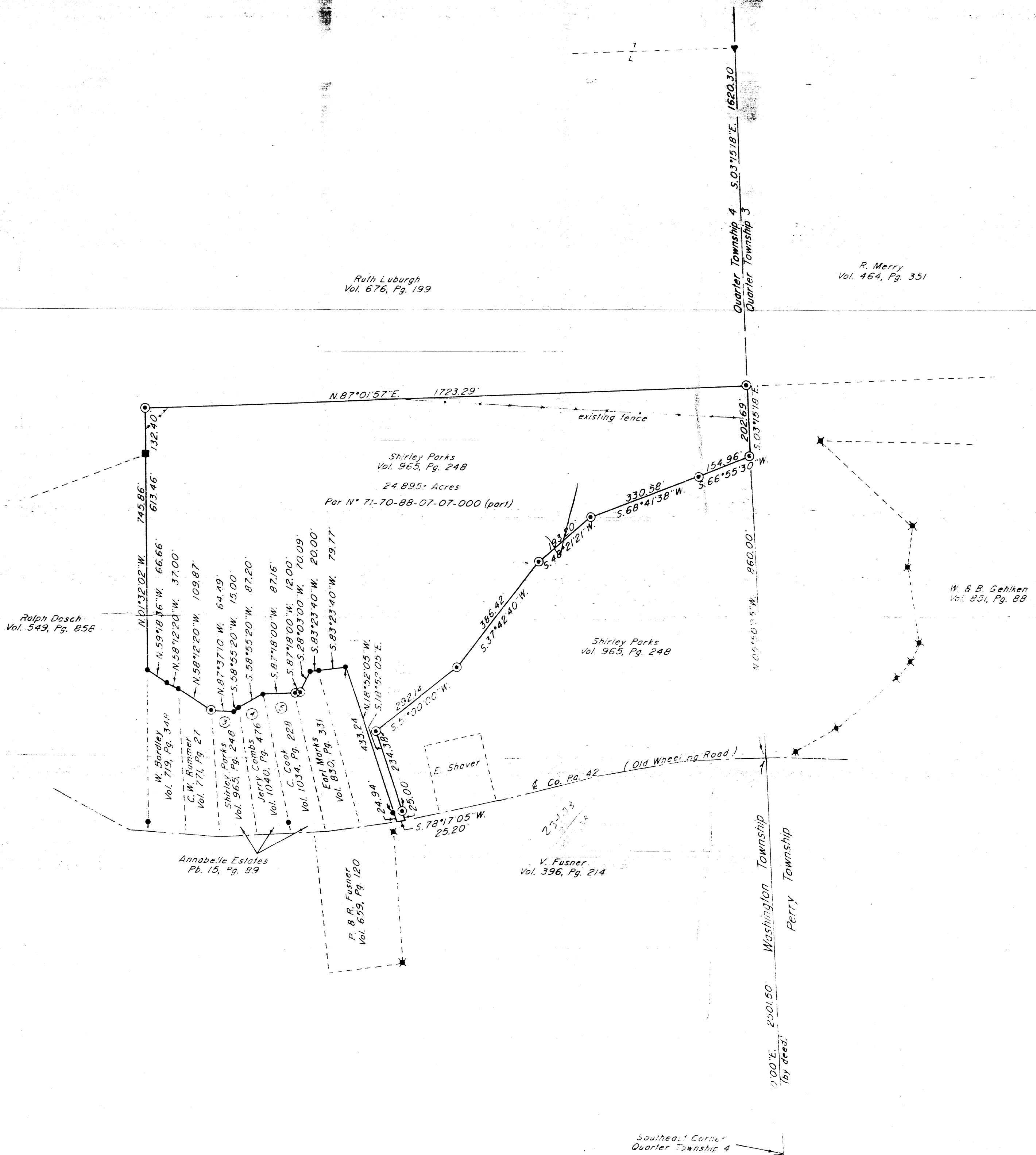
**OFFICE COPY
NOT RECORDABLE**

W.J. Bredemeyer
Reg. Surveyor #5718

Drawn by:	SOP	Date:	5-09-91
Scale:	1" = 200'	Checked:	L. Hultin
Job No.:	3319		

DESCRIPTION APPROVED FOR AUDITOR'S TRANSFER

BY *J. J. Nank*
5-09-91



Ruth Luburgh
Vol. 676, Pg. 199

R. Merry
Vol. 464, Pg. 351

Shirley Parks
Vol. 965, Pg. 248
24.895 Acres
Part N° 71-70-88-07-07-000 (part)

Ralph Dosch
Vol. 549, Pg. 856

Annabelle Estates
Pl. 15, Pg. 99

P. B. Fusner
Vol. 659, Pg. 120

V. Fusner
Vol. 396, Pg. 214

Shirley Parks
Vol. 965, Pg. 248

W. B. Sehlken
Vol. 851, Pg. 88

Southeast Corner
Quarter Township 4