

**SITUATED IN**

The State of Ohio, County of Muskingum Township of Washington, and being a part of the 4th Quarter Township, T1, R7.

**PLAT OF SURVEY**

**BASIS OF BEARING**

Bearings & distances are based on the Ohio State Plane Coordinate System, South Zone, NAD83 per GPS Observation.

**REFERENCES**

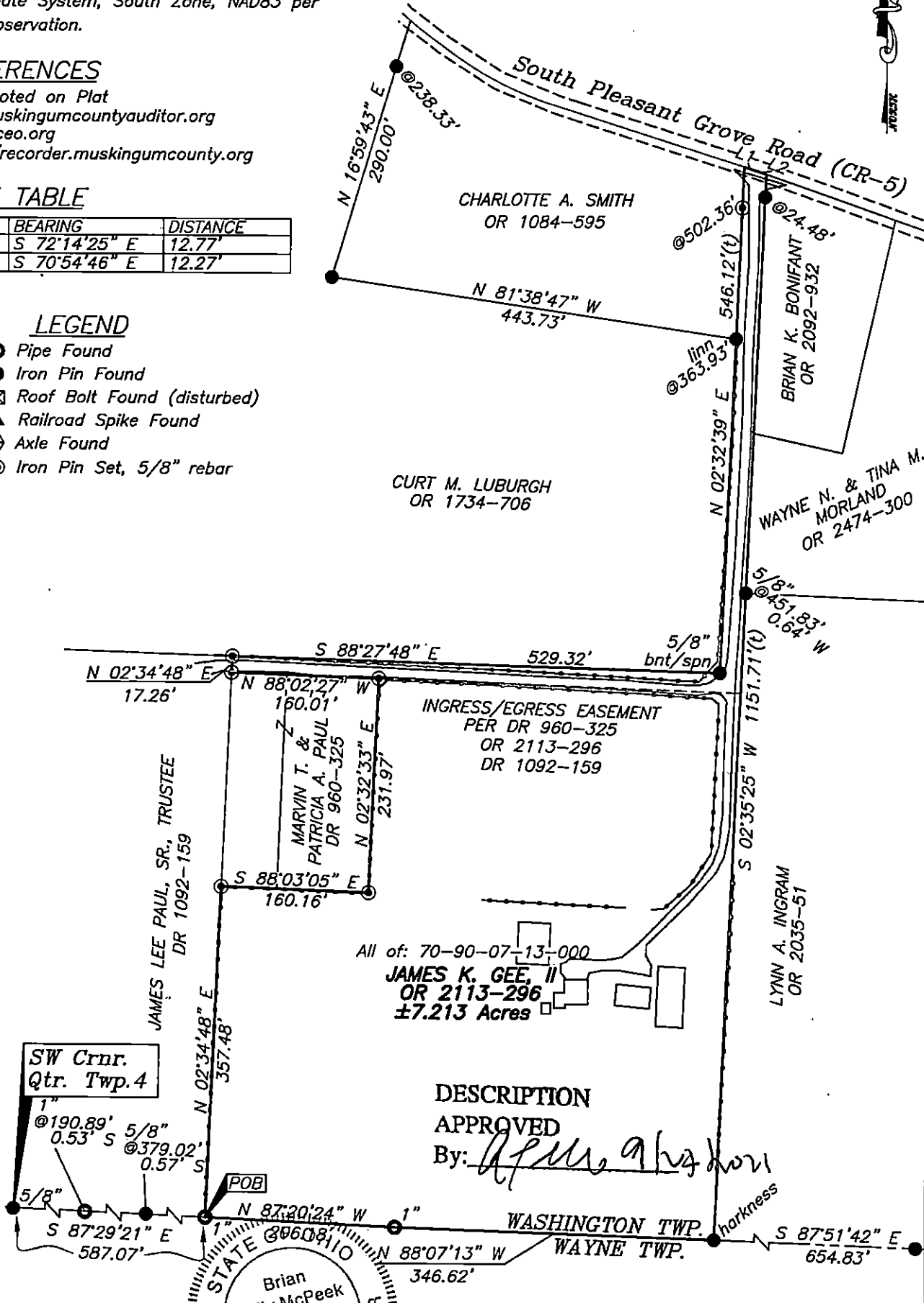
\* As Noted on Plat  
[www.muskingumcountyauditor.org](http://www.muskingumcountyauditor.org)  
[www.mceo.org](http://www.mceo.org)  
<http://recorder.muskingumcounty.org>

**LINE TABLE**

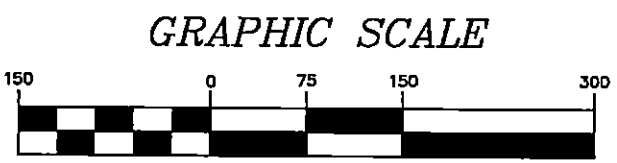
LINE	BEARING	DISTANCE
L1	S 72°14'25" E	12.77'
L2	S 70°54'46" E	12.27'

**LEGEND**

- Pipe Found
- Iron Pin Found
- ⊠ Roof Bolt Found (disturbed)
- ▲ Railroad Spike Found
- ⊗ Axle Found
- ⊙ Iron Pin Set, 5/8" rebar



DESCRIPTION APPROVED  
 By: *[Signature]*



( IN FEET )  
 1 inch = 150 ft.

**OFFICE COPY NOT RECORDABLE**

Brian Kelly McPeek  
 Reg. Surveyor No. 8517

This plat was prepared by McPeek Land Surveying, LLC in accordance with Chapter 4733-37 of the Administrative Code, and is intended to be used for the legal transfer of the property described and does not intend to describe all or any easements of record, nor encroachments unless otherwise intended.

**MCPEEK LAND SURVEYING**  
 LLC  
[www.mcpeeklandsurveying.com](http://www.mcpeeklandsurveying.com)  
 email: [brian@mcpeeklandsurveying.com](mailto:brian@mcpeeklandsurveying.com)  
 340 Robin Hood Ln., Zanesville, Oh 43701 • 740.704.6073